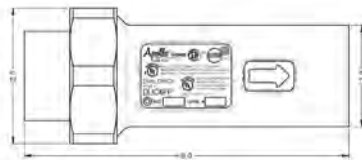


DUC 4FP SERIES
DUAL CHECK VALVE BACKFLOW PREVENTER



EXAMPLE:
4FP3A55A = 1" Dual Check FNPT Inlet x 1" FNPT outlet

PART NUMBER MATRIX

4FP [XX]	3 X	X	X	X
	INLET CONNECTION ¹	INLET SIZE	OUTLET SIZE	OUTLET CONNECTION ¹
4FP - STANDARD	A - FNPT	5 - 1"	5 - 1"	A - FNPT
4FPLF - LEAD FREE	C - FEMALE METER THREAD	6 - 1-1/4" (METER THREAD SIZING FOR 1" METER)	6 - 1-1/4" (METER THREAD SIZING FOR 1" METER)	B - MNPT E - MALE METER THREAD

¹ Not all inlet and outlet combinations are available. Please contact Customer Service for availability.

The Apollo® DUC 4FP Series Dual Check Backflow Preventer for Residential Fire Sprinkler Systems prevents backflow by either backpressure or backsiphonage from a cross-connection between potable water lines and substances that are objectionable, but not health-hazards.

FEATURES

- Low Pressure Loss
- Corrosion Resistant
- Replaceable Check Modules
- Pressure Drop at 30 gpm is Less than 6 psi
- Complies With NFPA Standard 13D
- 5 Year Warranty
- **Made in the USA**

PERFORMANCE RATING

- Maximum Operating Pressure: 175 psi
- Temperature Range: 33° to 180°F

APPROVALS

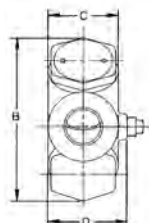
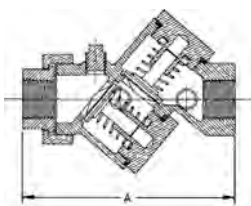
- ASSE 1024
- UL Classified
- CSA B64.6
- NSF/ANSI 372 Lead Free (4FPLF only)

STANDARD MATERIALS LIST

BODY	Bronze (C84400)	SPACER	Glass-Filled Noryl [®]
UNION NUT & TAILPIECES	Brass	O-RING	Stainless Steel
CHECK MODULES	Acetal/Nitrile/Stainless Steel		

Contact local water authorities for installation/service requirements.

DUC 40 SERIES
DUAL CHECK VALVE BACKFLOW PREVENTER



STANDARD MATERIALS LIST

BODY	Bronze (C84400 - LF C89836)
CAPS	Brass
SPRINGS	Stainless Steel
SEAT DISCS	EPDM

PART NUMBER MATRIX

40 [X]	3 X	X	X	X
	INLET CONNECTION ^{1,2}	INLET & OUTLET SIZE	OUTLET CONNECTION ^{1,2}	OPTIONS (CAN BE COMBINED)
40 - STANDARD	A - FNPT	3 - 1/2"	A - FNPT	TP - W/TEST PORTS DRILLED, TAPPED W/PLUGS
40LF - LEAD FREE	C - FEMALE METER THREAD	4 - 3/4"	C - FEMALE METER THREAD	TC - W/3 1/8"X1/4" TEST COCKS
	S - FEMALE METER SWIVEL	5 - 1"	EXAMPLE: 40 3S5 4A = 1" Dual Check Female with Meter Swivel Inlet (for connection to 3/4" meter) x 3/4"	

¹ For meter threads, order one size larger than meter size.

² Not all inlet and outlet combinations are available. Please contact Customer Service for availability.

* Standard body not drilled & tapped for test cocks.

The Apollo® Series DUC 40 Dual Check Valve prevents backflow by either backpressure or back-siphonage resulting from a cross-connection between potable water lines and substances that are objectionable, but not health-hazards.

FEATURES

- In-Line Repairable
- Low Pressure Loss
- Corrosion Resistant
- Compact and Lightweight
- Independently-Acting Check Valves
- Lead-Free Option
- Available in Standard and Swivel Types
- **Made in the USA**
- 5 Year Warranty

PERFORMANCE RATING

- Maximum Operating Pressure: 175 psi
- Temperature Range: 33° to 180°F

APPROVALS

- ASSE 1024
- CSA B64.6
- NSF/ANSI 372 Lead Free (40LF only)

DIMENSIONS

PART NUMBER MODEL NUMBER	DIMENSIONS (IN.)			WT. (LB.)	WT. W/TEST COCKS & BALL VALVES
	A	B	C		
DUC4012 40-3x3-3x	4-3/8	3-1/2	3-1/2	2	4
DUC4034 40-3x4-4x	4-3/8	3-1/2	1-1/2	2	4.6
DUC401 40-3x5-5x	4-3/8	3-1/2	1-1/2	2.1	6.4