

Schedule 80 PVC Product
Schedule 80 Repair Fittings & Compression Couplings & GripLoc™ Coupling



Schedule 80 Repair Fittings

Pipe Extenders

Part Number	Size	Std Pk	Mstr Ctn	Prod Code	MSRP
-------------	------	--------	----------	-----------	------

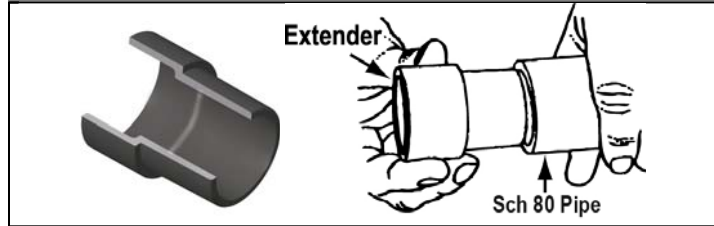
Pipe O.D. Spigot x Pipe I.D. Spigot

Fabricated, Non-Pressure Rated

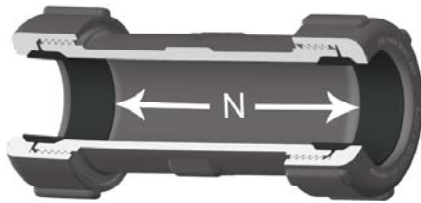
S0801-20F	2 - 2" EXT	1	10	394	90.46
S0801-25F	2-1/2 - 2" EXT	1	8	394	104.67
S0801-30F	3 - 2-1/2" EXT	1	8	394	118.47
S0801-40F	4 - 2-5/8" EXT	1	12	394	128.43
S0801-60F	6 - 3-1/2" EXT	1	10	394	171.52
S0801-80F	8 - 5" EXT	1	2	394	185.17
S0801-100F	10 - 5-1/2" EXT	1	0	394	240.98
S0801-120F	12 - 6-1/2" EXT	1	0	394	338.45
S0801-140F	14 - 7-1/4" EXT	1	0	394	960.35
S0801-160F	16 - 9" EXT	1	0	394	1123.93
S0801-180F	18 - 10" EXT	1	0	394	1475.19

Solvent Cement I.D. Spigot into Pipe O.D.

"EXT" indicates MINIMUM length of pipe extension added



Compression Couplings



- Designed for Quick Connections, System Modifications or Repairs
- Completely Redesigned for Improved Versatility
- Easy-Thread Compression Nut
- New Spigot Conversion Capability
- Full Service 200 PSI Pressure Rating
- NSF® Certified for Potable Water Use

Compression Coupling, PVC Gray

Part Number	Size	Gasket to Gasket - N	Std Pk	Mstr Ctn	Prod Code	MSRP
-------------	------	----------------------	--------	----------	-----------	------

Elastomer Gasket

S110-05G	1/2	3-3/8	28	0	024	5.06
----------	-----	-------	----	---	-----	------

Compression Coupling, PVC Gray (continued)

Part Number	Size	Gasket to Gasket - N	Std Pk	Mstr Ctn	Prod Code	MSRP
-------------	------	----------------------	--------	----------	-----------	------

Elastomer Gasket

S110-07G	3/4	3-9/16	24	0	024	7.57
S110-10G	1	3-3/4	20	0	024	9.77
S110-12G	1-1/4	4-1/8	10	0	024	15.07
S110-15G	1-1/2	4-5/8	16	0	024	15.56
S110-20G	2	5-1/16	12	0	024	20.19
S110-25G	2-1/2	5-7/8	6	0	024	38.02
S110-30G	3	6-3/16	4	0	024	49.69
S110-40G	4	7-3/8	4	0	024	81.77
S110-60G	6	7-9/16	1	0	024	185.95

N = Gasket to Gasket

Part Number	Size	Std Pk	Mstr Ctn	Prod Code	MSRP
-------------	------	--------	----------	-----------	------

Compression Coupling Nut Wrenches

Fits all Spears® Compression Fittings



CCW-005	1/2	1	50	299	14.65
CCW-007	3/4	1	50	299	14.91
CCW-010	1	1	50	299	15.54
CCW-012	1-1/4	1	50	299	17.57
CCW-015	1-1/2	1	50	299	18.96
CCW-020 ¹	2	1	50	299	21.19
CCW-030 ²	3	1	25	299	26.06
CCW-060	6	8	0	299	39.19

¹ CCW-20 - Wrench also fits 2-1/2" Coupling Body

² CCW-30 - Wrench also fits 4" Coupling Body

Compression Coupling Nut Wrench Set

Part Number	Size	Std Pk	Mstr Ctn	Prod Code	MSRP
-------------	------	--------	----------	-----------	------

Fits all Spears® Compression Fittings

CCW-000	Set	1	25	299	122.38
---------	-----	---	----	-----	--------

Complete Set of Wrenches, Sizes 1/2 - 3

GripLoc™ Coupling

GripLoc™ Coupling

WARNING: DO NOT INSERT FINGERS
For Cold Water Only - EPDM Gasket
Pressure Rated to 235 psi @ 73°F



Uses No Solvent Cement

GL429-005G	1/2	1	40	137	17.01
GL429-007G	3/4	1	36	137	21.87
GL429-010G	1	1	20	137	22.47
GL429-012G	1-1/4	1	15	137	25.99
GL429-015G	1-1/2	1	15	137	25.99
GL429-020G	2	1	10	137	27.21

GripLoc™ IPS Size Release Tool

For Removal of GripLoc™ Fittings



GLIPSRT-005	1/2	1	50	299	5.83
-------------	-----	---	----	-----	------



Schedule 80 PVC Product
GripLoc™ Coupling & GripLoc™ Cap & PVC Flange Cut-in Kit

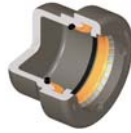
GripLoc™ Coupling

Part Number	Size	Std Pk	Mstr Ctn	Prod Code	MSRP
GripLoc™ IPS Size Release Tool (continued)					
For Removal of GripLoc™ Fittings					
GLIPSRT-007	3/4	1	50	299	5.83
GLIPSRT-010	1	1	50	299	5.83

GripLoc™ Cap

GripLoc™ Cap

WARNING: DO NOT INSERT FINGERS
For Cold Water Only - EPDM Gasket
Pressure Rated to 235 psi @ 73°F



Uses No Solvent Cement

GL447-005G	1/2	25	150	137	15.06
GL447-007G	3/4	10	50	137	19.52
GL447-010G	1	1	50	137	20.23
GL447-012G	1-1/4	1	25	137	26.69
GL447-015G	1-1/2	10	160	137	34.93
GL447-020G	2	1	25	137	33.75

PVC Flange Cut-in Kit

When planned system changes are needed, system downtime can be a major concern. Spears® Flange Cut-in Kit minimizes downtime for actual cut-in to allow new connection in just minutes. Kit provides all necessary components to create a flanged joint for connection to system alterations in just minutes. Special Flange Hub can be cemented to piping and allowed to cure before shutting down and cutting into system. This allows immediate joining to mating flange (included) that can also be pre-assembled to desired alteration piping.

Kit includes special Split Flange Socket Hub, O-ring Sealed Hub Body, Stainless Steel Clamp, Split Ring, Full-Faced EPDM or FKM Gasket, Mating Flange Hub & Ring, and complete set of Stainless Steel Bolts, Flat Washers and anti-seize Brass Nuts to make the final joint. Available for IPS Pipe Sizes 1-1/2" - 12".



Pressure Rated to 150 psi @ 73°F (22°C)
 Maximum Service Temperature
 PVC = 140°F (60°C)
 CPVC = 200°F (93°C)
 Temperature/Pressure De-ratings Apply

Flange Cut-in Kit

Size	EPDM Gasket	FKM Gasket	Std Pk	Mstr Pk	Prod Code
1-1/2	FCKE-015 498.82	FCKV-015 515.72	1	4	017
2	FCKE-020 516.29	FCKV-020 544.61	1	4	017
2-1/2	FCKE-025 578.72	FCKV-025 614.91	1	0	017
3	FCKE-030 649.59	FCKV-030 686.98	1	0	017
4	FCKE-040 1077.04	FCKV-040 1131.11	1	0	017
6	FCKE-060 1780.75	FCKV-060 2122.71	1	0	017
8	FCKE-080 2158.37	FCKV-080 2601.76	1	0	017
10	FCKE-100 3753.92	FCKV-100 4023.73	1	0	017
12	FCKE-120 4646.96	FCKV-120 4786.72	1	0	017