

ACR COPPER FITTINGS

Bushings

9618

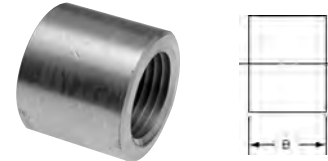
Flush Bushing Ftg x C - Wrot



O.D. SIZE	WT./LBS.	MUELLER PART NUMBER	DIM. C INCHES
3/8 x 1/4	0.01	W-1706	3/32
1/2 x 3/8	0.01	W-1712	3/16
5/8 x 3/8	0.04	W-1717	9/32
5/8 x 1/2	0.02	W-1715	3/16
3/4 x 5/8	0.03	W-1720	3/32
7/8 x 1/2	0.11	W-1727	15/32
7/8 x 5/8	0.08	W-1726	11/32
7/8 x 3/4	0.04	W-1725	7/32
1 1/8 x 5/8	0.22	W-1739	15/32
1 1/8 x 7/8	0.12	W-1737	7/32
1 3/8 x 1 1/8	0.17	W-1743	5/32
1 5/8 x 1 3/8	0.22	W-1750	1/4
2 1/8 x 1 5/8	0.66	W-1758	5/16

9718-3

Flush Bushing Ftg x F - Cast ⚠

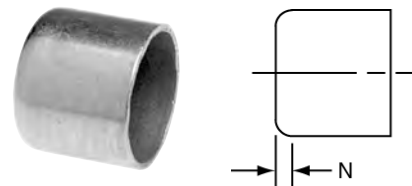


O.D. SIZE	APPROX. NET WT./LBS.	MUELLER PART NUMBER	DIM. B INCHES
1 3/8 x 3/4	0.18	A-7816	1 1/32

Caps

9617

Cap C



O.D. SIZE	APPROX. NET WT./LBS.	MUELLER PART NUMBER	DIM. N INCHES
1/4†	0.01	W-7002	1/32
3/8†	0.01	W-7004	1/16
1/2†	0.01	W-7006	3/32
5/8†	0.02	W-7007	1/8
3/4†	0.03	W-7008	1/8
7/8†	0.04	W-7009	3/16
1 1/8†	0.07	W-7011	5/32
1 3/8†	0.10	W-7012	3/32
1 5/8†	0.16	W-7013	1/8
2 1/8†	0.27	W-7014	5/32
2 5/8†	0.47	W-7015	7/32
3 1/8	0.78	W-7016	7/32
4 1/8	1.66	W-7018	1/4

9618-3

Flush Bushing Ftg x F - Wrot



O.D. SIZE	APPROX. NET WT./LBS.	MUELLER PART NUMBER	DIM. B INCHES
5/8 x 1/8	0.03	A-7812	9/16
5/8 x 1/4	0.02	A-7813	9/16
1 1/8 x 1/2	0.12	A-7815	31/32
1 5/8 x 1	0.24	A-7817	1 5/32

⚠ WARNING: This product can expose you to chemicals including lead, which is known to the State of California to cause cancer and birth defects or other reproductive harm. For more information go to www.P65Warnings.ca.gov.

† UL Recognized to 700 PSI (select diameters).

Visit our website for the most current information.