

**Schedule 40 Fittings Product**  
**Short Repair Couplings & GripLoc™ Compression Couplings & GripLoc™ Compression Adapters**



**Repair Couplings**

Part Number	Size	Travel - T	Std Pk	Mstr Ctn	Prod Code	MSRP
-------------	------	------------	--------	----------	-----------	------

Repair Coupling - Spigot x Socket (continued)

**PVC White with EPDM O-ring**

S118-60	6	6	1	0	025	220.49
---------	---	---	---	---	-----	--------

**Unit Must Be Thrust Blocked**  
**T = Repair Coupling Travel**



Repair Coupling - Socket x Socket

**PVC White with EPDM O-ring**

Can be used as short-stroke Expansion Joint

S119-05	1/2	3	30	0	025	6.82
S119-07	3/4	4	24	0	025	7.76
S119-10	1	4	20	0	025	8.94
S119-12	1-1/4	4	10	0	025	16.86
S119-15	1-1/2	4	16	0	025	18.37
S119-20	2	4	10	0	025	28.41
S119-25	2-1/2	6	5	0	025	41.22
S119-30	3	6	4	0	025	51.49
S119-40	4	6	2	0	025	90.12
S119-60	6	6	1	0	025	220.49

**Unit Must Be Thrust Blocked**  
**T = Repair Coupling Travel**

**Short Repair Couplings**

Repair Coupling - Short, Spigot x Socket

**PVC White with EPDM O-ring**

SH118-05	1/2	2	36	0	025	6.82
SH118-07	3/4	2-1/4	30	0	025	7.76
SH118-10	1	2	35	0	025	8.94
SH118-12	1-1/4	2-1/2	25	0	025	16.86
SH118-15	1-1/2	2-3/4	32	0	025	18.37
SH118-20	2	3	15	0	025	28.41

**Unit Must Be Thrust Blocked**  
**T = Repair Coupling Travel**



Repair Coupling - Short, Socket x Socket

**PVC White with EPDM O-ring**

SH119-05	1/2	2	40	0	025	6.82
SH119-07	3/4	2	30	0	025	7.76
SH119-10	1	2	30	0	025	8.94
SH119-12	1-1/4	2-1/2	20	0	025	16.86
SH119-15	1-1/2	2-3/4	21	0	025	18.37



Part Number	Size	Travel - T	Std Pk	Mstr Ctn	Prod Code	MSRP
-------------	------	------------	--------	----------	-----------	------

Repair Coupling - Short, Socket x Socket (continued)

**PVC White with EPDM O-ring**

SH119-20	2	3-1/4	12	0	025	28.41
----------	---	-------	----	---	-----	-------

**Unit Must Be Thrust Blocked**  
**T = Repair Coupling Travel**

**GripLoc™ Compression Couplings**

Tightening nut compresses special stainless steel Gripper Ring to firmly grip pipe and prevent potential pull-out. Compressed Gland Ring ensures positive O-ring seal against pipe.



Part Number	Size	Std Pk	Mstr Ctn	Prod Code	MSRP
-------------	------	--------	----------	-----------	------

GripLoc™ Compression Couplings

**WARNING: DO NOT INSERT FINGERS**  
**For Cold Water Only - EPDM Gasket**  
**1/2" - 2" Pressure Rated to 235 psi**  
**3" - 4" Pressure Rated to 150 psi**



Hand Tighten ONLY - No Nut Wrenches Required

S112-05	1/2	28	0	131	22.56
S112-07	3/4	1	24	131	24.92
S112-10	1	1	20	131	31.28
S112-12	1-1/4	1	10	131	38.15
S112-15	1-1/2	1	16	131	46.19
S112-20	2	1	12	131	54.45
S112-30	3	1	4	131	93.47
S112-40	4	1	4	131	105.68

**GripLoc™ Compression Adapters**

GripLoc™ Compression Male Adapter

**WARNING: DO NOT INSERT FINGERS**  
**For Cold Water Only - Mipt x EPDM**  
**GripLoc™ Gasket**



Hand Tighten ONLY - No Nut Wrenches Required

S135-05	1/2	1	25	131	13.52
S135-07	3/4	1	25	131	15.86



Schedule 40 Fittings Product

GripLoc™ Compression Adapters & GripLoc™ Coupling & GripLoc™ Cap

GripLoc™ Compression Adapters

Part Number	Size	Std Pk	Mstr Ctn	Prod Code	MSRP
-------------	------	--------	----------	-----------	------

GripLoc™ Compression Male Adapter (continued)

**WARNING: DO NOT INSERT FINGERS**

**For Cold Water Only - Mipt x EPDM GripLoc™ Gasket**

S135-10	1	1	25	131	18.13
S135-12	1-1/4	1	20	131	20.91
S135-15	1-1/2	1	25	131	23.81
S135-20	2	1	25	131	29.28

GripLoc™ Compression Female Adapter

**WARNING: DO NOT INSERT FINGERS**

**For Cold Water Only - Fipt x EPDM**

**GripLoc™ Gasket**



Hand Tighten ONLY - No Nut Wrenches Required

S136-05	1/2	1	28	131	21.84
S136-07	3/4	1	24	131	24.37
S136-10	1	1	20	131	28.41
S136-12	1-1/4	1	20	131	39.06
S136-15	1-1/2	1	16	131	49.46
S136-20	2	1	10	131	60.78

GripLoc™ Coupling

GripLoc™ Coupling

**WARNING: DO NOT INSERT FINGERS**

**For Cold Water Only - EPDM Gasket**

**Pressure Rated to 235 psi @ 73°F**



Uses No Solvent Cement

GL429-005	1/2	1	40	131	15.79
GL429-007	3/4	1	36	131	20.65
GL429-010	1	1	20	131	21.26
GL429-012	1-1/4	1	15	131	25.27
GL429-015	1-1/2	1	15	131	25.27
GL429-020	2	1	10	131	26.24

GripLoc™ IPS Size Release Tool

**For Removal of GripLoc™ Fittings**



GLIPSRT-005	1/2	1	50	299	5.83
GLIPSRT-007	3/4	1	50	299	5.83
GLIPSRT-010	1	1	50	299	5.83

GripLoc™ Cap

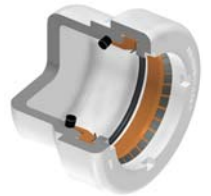
Part Number	Size	Std Pk	Mstr Ctn	Prod Code	MSRP
-------------	------	--------	----------	-----------	------

GripLoc™ Cap

**WARNING: DO NOT INSERT FINGERS**

**For Cold Water Only - EPDM Gasket**

**Pressure Rated to 235 psi @ 73°F**



Uses No Solvent Cement

GL447-005	1/2	1	50	131	14.51
GL447-007	3/4	10	50	131	18.81
GL447-010	1	1	50	131	19.75
GL447-012	1-1/4	1	25	131	25.96
GL447-015	1-1/2	1	25	131	29.54
GL447-020	2	1	25	131	33.12