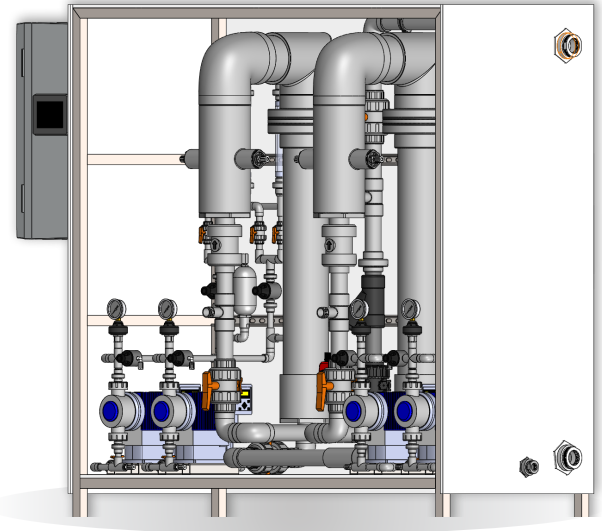


Sub-DC2 GENERATOR



Our Submersible DC2 series (Sub-DC2) of generators takes the traditional 2-chem generation method to a new level. Utilizing 32% hydrochloric acid and 31% sodium chlorite, PureLine's Sub-DC2 generators are able to realize greater than 95% conversion rates, far exceeding competing lines that are only capable of converting lower concentration pre-cursors. This is one of the safest generators available with the reaction completed contained underwater preventing ClO₂ concentration from exceeding 1000ppm. The system is available in an open frame configuration or a fully enclosed cabinet. With two generators in one this system can act as its own built in spare or allow for independent systems. The Sub-DC2 features low maintenance cost and reliable operation. The system has multiple safety interlocks and controls that allow the user to accurately maintain chem fed ratios for optimal efficiency. The system is available with a batch tank(s), Injection pumps and automated manifolds that accept external control signals for flow pacing and/or residual control. The DC2 is ideal for affordable and safe ClO₂ generation from 1kg/hr to 20kg/hr.

Pure Advantages

- Safe and efficient system
- Low maintenance cost
- Monitoring and control capabilities.
- Multiple safety interlocks (flow, temp, leak etc.)
- Enhanced chem. feed control to maximize efficiency and safety

PureLine
**SUB
DC2**

Reaction Chemistry

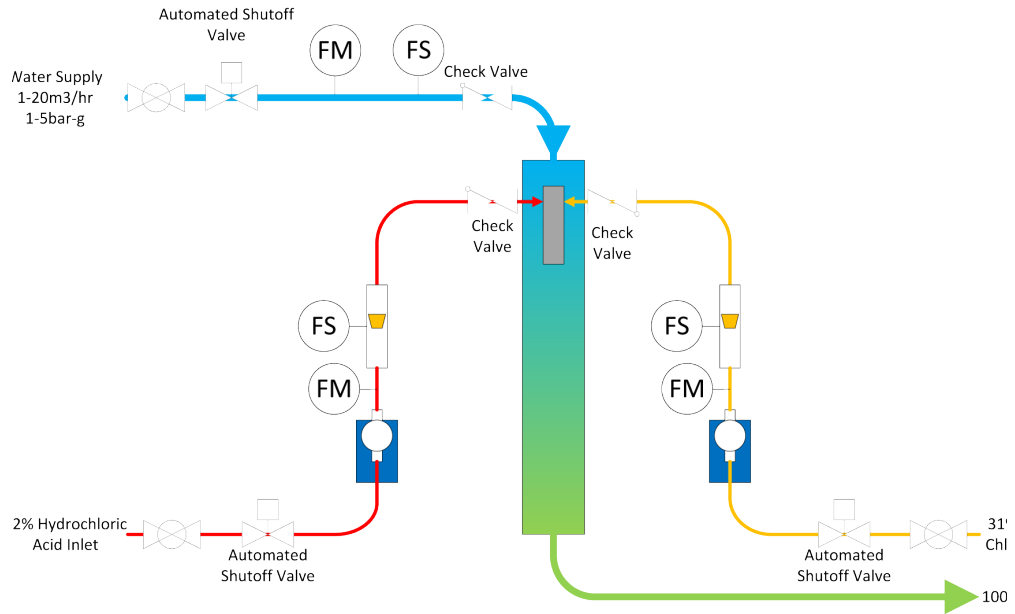


Specifications

Capacity:	1kg/hr, 2kg/hr, 6kg/hr, 12kg/hr, 20kg/hr
Chemical Usage:	Purecide E (31% NaClO ₂) ~5.7kg/kg ClO ₂ 32% HCl ~5.5kg/kg ClO ₂
Electrical Power:	220VAC 1ph 20A-40A service (Power consumption ~1kg/hr – 1.5kVA, 2kg/hr – 2kVA 6kg/hr 3.5kVA, 12kg/hr – 5kVA, 20kg/hr 6kVA (Assumes ClO ₂ booster Pump with 10Bar Pressure)
Inlet Water:	1 m ³ /hr – 20m ³ /hr (1-20kg/hr units) at ~2bar (regulated)
Controls:	AB Control Logix PLC: <ul style="list-style-type: none"> • Remote I/O for Start/Stop and monitoring • Timers
Cabinet:	Fiber glass/PVC Skid Standard (optional) White Polypropylene enclosure
Dimensions:	2032mm L x 787mm D x 1918mm H

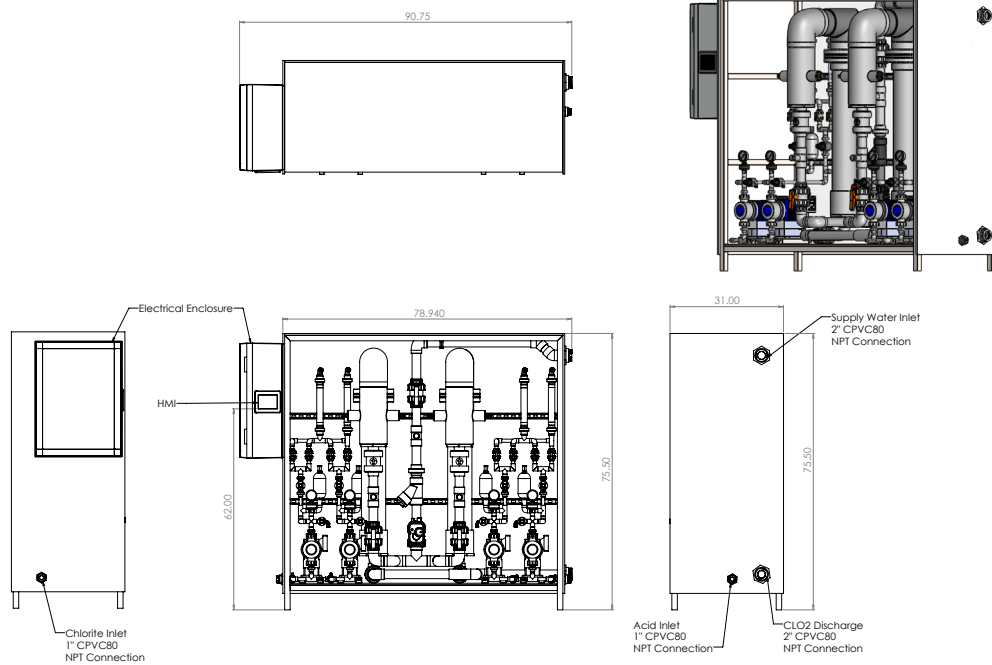
Co-Products:

– Salt (NaCl), Excess Acid, Trace amounts of Chlorate (NaClO₃), Chlorine (Cl₂), Chlorite (NaClO₂)



▲ Process Flow Diagram

▼ Sub-DC2 Series Generator



Experts in the generation and application of chlorine dioxide

Pureline offers a complete line of chlorine dioxide products, solutions and accessories.



PureLine

847 963 8475

info@pureline.com

1241 N. Ellis Street
Bensenville, IL 60106

pureline.com