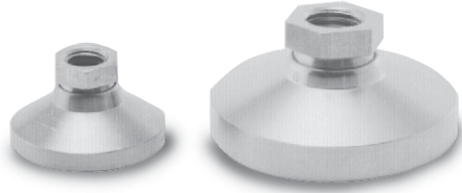


Leveling Pads



Standard Features

- Replacement feet, adapt to most floor scales
- Available in cadmium-plated steel or stainless steel
- Simple swivel design
- Use with single-ended shear beams or bending beams to provide a large, flat load introduction surface

Part Number/Price

| Part # | Thread Size | Height | Diameter | Price |
|------------------------|-------------|---------|----------|----------|
| Mild Steel | | | | |
| 18817 | 1/2-13 NC | 1.12 in | 1.87 in | \$25.00 |
| 18820 | 3/4-10 NC | 1.50 in | 3.00 in | \$44.00 |
| Stainless Steel | | | | |
| 18818 | 1/2-13 NC | 1.12 in | 1.87 in | \$59.00 |
| 18833 | 3/4-10 NC | 1.50 in | 3.00 in | \$103.00 |

Used in conjunction with leveling pad stems

Leveling Mount



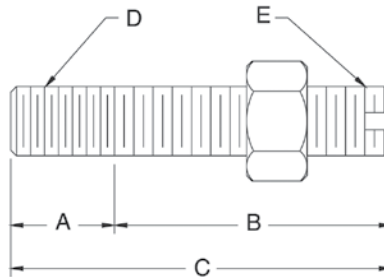
Standard Features

- Designed for use with some floor scales or machinery platforms
- Can be used as a replacement foot on the SP floor scale to limit vibrations transmitted to the scale through the floor
- Provides vibration isolation on most portable platforms

Part Number/Price

| Part # | Thread Size | Height | Diameter | Price |
|--------|-------------|---------|----------|----------|
| 18819 | 1/2-13 NC | 1.81 in | 5.00 in | \$100.00 |

Leveling Pad Stems



Standard Features

- For use with leveling pads
- One jam nut included

Part Number/Price

| Part # | A | B | C | D | E | Slot | Material | Price | | |
|------------------------|---------|---------|---------|---------|---------|---------|-----------------------|-------|------|---------|
| Mild Steel | | | | | | | | | | |
| 17693 | 0.75 in | 19.1 mm | 2.00 in | 50.8 mm | 2.75 in | 69.9 mm | 3/4-10 UNC 3/4-16 UNF | NO | 1045 | \$16.00 |
| Stainless Steel | | | | | | | | | | |
| 17689 | 0.50 in | 12.7 mm | 1.50 in | 38.1 mm | 2.00 in | 50.8 mm | 1/2-13 UNC 1/2-20 UNF | YES | SS | \$24.00 |
| 17695 | 0.75 in | 19.1 mm | 2.00 in | 50.8 mm | 2.75 in | 69.9 mm | 3/4-10 UNC 3/4-16 UNF | NO | SS | \$38.00 |

Warning: Do not use to suspend a load