

# Bench Scale Ball Transfer and Roller Conveyor

1. Rice Lake Weighing Systems model number or part number of bench scale \_\_\_\_\_
2. Dimensions of scale: \_\_\_\_\_ " L x \_\_\_\_\_ " W
3. Capacity of scale: \_\_\_\_\_ lb
4. Dimensions of the smallest box/container to be used with the scale: \_\_\_\_\_ " L x \_\_\_\_\_ " W

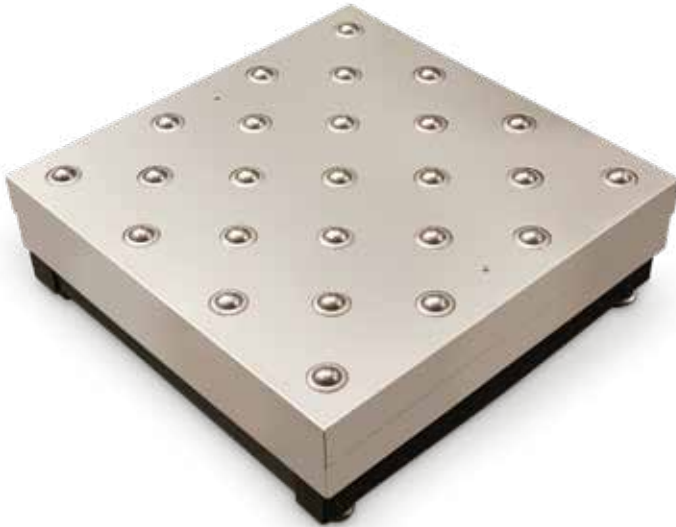


## Ball Transfer

### 6. Construction of Ball Transfer

- Steel Ball, Steel Housing Zinc Finish
- Stainless Steel Ball, Steel Housing Zinc Finish
- Stainless Steel Ball, Stainless Steel Housing

### 7. Center to center ball dimension, if known:

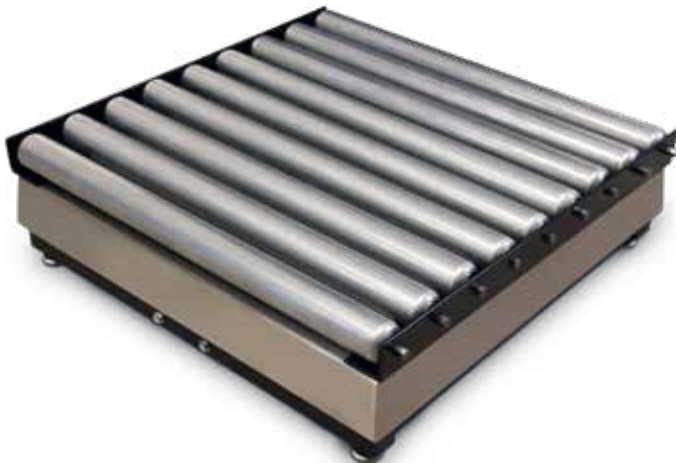


## Ball Transfer with Shroud

### 6. Construction of Ball Transfer

- Steel Ball, Steel Housing Zinc Finish
- Stainless Steel Ball, Stainless Steel Housing

### 7. Center to center ball dimension, if known:



## Roller Conveyor

### 8. Roller Diameter, if known:

### 9. Center to Center Dimension, if known:

### 10. Construction of Rollers

- Plain Steel
- Galvanized Steel
- Aluminum
- Stainless Steel

### 7. Direction of roller conveyor, if platform is rectangular shaped (i.e. 18" x 24" scale, please tell us if the rollers should be 18" or 24" long.)