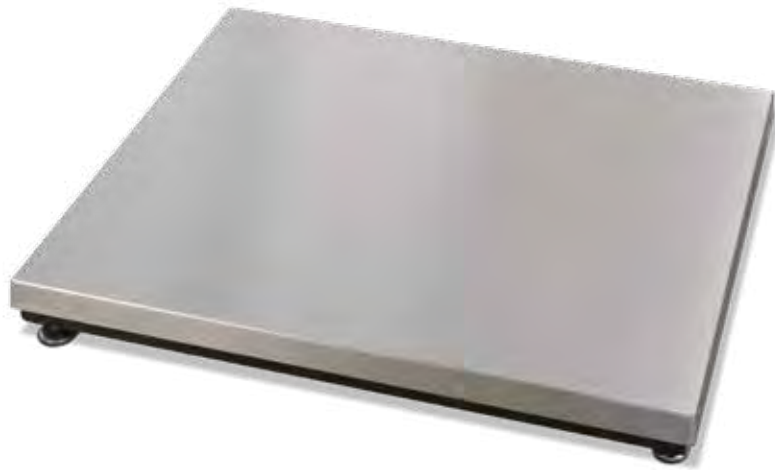



BenchMark™ LP

Low Profile Bench Scales



 Ideal for Aviation Weighing. A complete system can be sold with the Tracer® AV. Reference Aviation section for specifications.

Specifications

Load Cell, Rated Output:
IP65 aluminum, 1.0 mV/V ±10%

End Load Capacity:
60% of full scale capacity

Cable Length:
20 ft (6.1 m) for connecting junction box to indicator

Warranty:
Two-year limited warranty

Approvals:
NTEP CC 08-017, Class III 5,000 d (except 1000 lb capacity)
Measurement Canada AM 5660, Class III 5,000 d (except 500 kg capacity)

Standard Features

- Mild steel base construction
- 304 stainless steel cover
- ABS junction box
- Four planar beam load cells
- Adjustable leveling feet
- 20 ft of EL147 load cell cable
- Holes in lower frame for mounting scale without adjustable leveling feet

APPROVALS



Measurement
Canada
Approved

Part Number/Price

| Part # | Capacity | Platform Dimensions L x W x H1 (H2) | Est. Weight | Price |
|---------|-------------------|-------------------------------------|-------------|------------|
| 97662 | 100 lb (50 kg) | 18 x 18 x 2.63 in (1.67 in*) | 75 lb | \$1,120.00 |
| 97663 | 250 lb (125 kg) | 18 x 18 x 2.50 in (1.74 in*) | 85 lb | \$1,145.00 |
| 97664 | 500 lb (250 kg) | 18 x 18 x 2.69 in (1.93 in*) | 85 lb | \$1,170.00 |
| 97665 | 100 lb (50 kg) | 24 x 24 x 2.66 in (1.69 in*) | 85 lb | \$1,340.00 |
| 97666 | 250 lb (125 kg) | 24 x 24 x 2.83 in (2.07 in*) | 100 lb | \$1,365.00 |
| 97667 | 500 lb (250 kg) | 24 x 24 x 3.02 in (2.26 in*) | 100 lb | \$1,390.00 |
| 97668 | 500 lb (250 kg) | 30 x 30 x 3.02 in (2.26 in*) | 150 lb | \$1,600.00 |
| 97669** | 1,000 lb (500 kg) | 30 x 30 x 3.47 in (2.70 in*) | 190 lb | \$1,655.00 |
| 97670 | 500 lb (250 kg) | 36 x 36 x 3.02 in (2.26 in*) | 175 lb | \$2,100.00 |
| 97671** | 1,000 lb (500 kg) | 36 x 36 x 3.47 in (2.70 in*) | 175 lb | \$2,150.00 |

*Height without adjustable leveling feet

** Non-NTEP or Measurement Canada Approved

