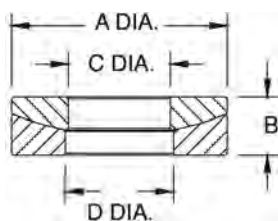


Spherical Washer Sets

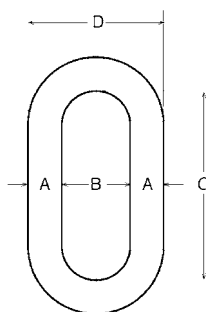


Part Number/Price

Part #	Bolt Size	A	B	C	D	Price
Mild Steel						
15196	0.25 in	6.4 mm	0.62 in	15.8 mm	0.20 in	\$13.00
15197	0.38 in	9.7 mm	0.88 in	22.4 mm	0.25 in	\$16.00
15198	0.50 in	12.7 mm	1.12 in	28.5 mm	0.31 in	\$6.00
15199	0.62 in	15.8 mm	1.38 in	35.1 mm	0.31 in	\$17.00
15200	0.75 in	19.1 mm	1.62 in	41.1 mm	0.38 in	\$22.00
15201	1.00 in	25.4 mm	2.00 in	50.8 mm	0.50 in	\$35.00
15202	1.25 in	31.8 mm	2.62 in	66.6 mm	0.50 in	\$66.00
15203	1.50 in	38.1 mm	2.88 in	73.2 mm	0.53 in	\$72.00
15205	2.00 in	50.8 mm	3.88 in	98.6 mm	0.81 in	\$115.00
Stainless Steel						
33218	0.50 in	12.7 mm	1.12 in	28.5 mm	0.31 in	\$24.00
33220	0.75 in	19.1 mm	1.62 in	41.1 mm	0.38 in	\$34.00

Standard Features

- Self-colored or hot-dip galvanized
- Forged carbon steel quenched and tempered



Weldless End Links



Part Number/Price

Part #	A	B	C	D	Safe Load*	Price
F312L	0.625 in	15.9 mm	1.00 in	25.4 mm	3.25 in	\$52.00
17810	0.875 in	22.2 mm	2.00 in	50.8 mm	5.13 in	\$155.00
21911	1.00 in	22.2 mm	2.25 in	57.2 mm	5.75 in	\$315.00
65430	1.25 in	31.8 mm	2.50 in	63.5 mm	7.00 in	\$140.00
21912	1.375 in	34.9 mm	2.75 in	69.9 mm	7.75 in	\$450.00

*Do not exceed the safe load