

Pre-engineered Tower Packages

Corrosion monitoring system

ProMinent® introduces a new pre-engineered panel system for mounting chemical feed controllers. These panels will accommodate all ProMinent® Tower Controllers. The wall-mounted panels are equipped with 3/4" PVC piping and fittings.

Applications

- Cooling Water
- Condensate Loops
- Chiller Systems

Features & Benefits

- 3/4" PVC sch 80, Maximum 150 psi / 120 °F
- Mounted on 3/8" PE backplane
- Chemical injection ports
- Y-strainer standard on all models
- Controller and Sensors ordered separately



Single Tower Package (P/N: 7746461)

Options

- Rotameter, 10 GPM
- Check Valve
- Dole Valve, 5 GPM
- Globe Valve
- Pump Shelf



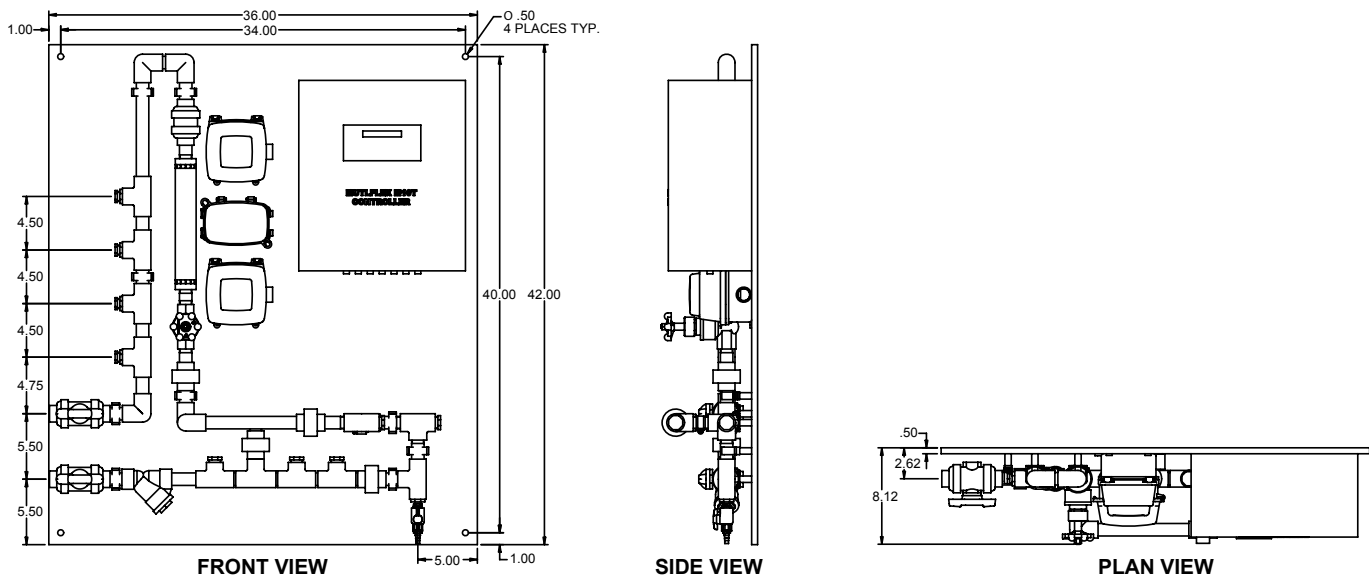
Wall-mounted Pump Shelf (optional)

Pre-engineered Tower Packages

Package Description

Part Number	Panel Description	Inlet	Options	*Controller Orientation
7746460	Single Tower, Inlet/Outlet same side	Left	none-basic	Right side
7746555	Single Tower, Inlet/Outlet same side	Right	none-basic	Left side
7746461	Single Tower, Inlet/Outlet same side	Left	10 gpm rotameter	Right side
7746556	Single Tower, Inlet/Outlet same side	Right	10 gpm rotameter	Left side
7746462	Single Tower, Inlet/Outlet opposite side	Left	none-basic	Left side
7746557	Single Tower, Inlet/Outlet opposite side	Right	non-basic	Right side
7746463	Single Tower, Inlet/Outlet opposite side	Left	10 gpm rotameter	Left side
7746558	Single Tower, Inlet/Outlet opposite side	Right	10 gpm rotameter	Right side

Dimensional Drawings



P/N: 7746461 is shown

ProMinent®

ProMinent Fluid Controls, Inc. (US)
 136 Industry Drive
 Pittsburgh, PA 15275-1014
 Tel: (412) 787-2484
 Fax: (412) 787-0704
 eMail: sales@prominent.us
 www.prominent.us

ProMinent Fluid Controls Ltd. (Canada)
 490 Southgate Drive
 Guelph, ON N1G 4P5
 Tel: 1-888-709-9933 | (519) 836-5692
 Fax: (519) 836-5226
 eMail: sales@prominent.ca
 www.prominent.ca