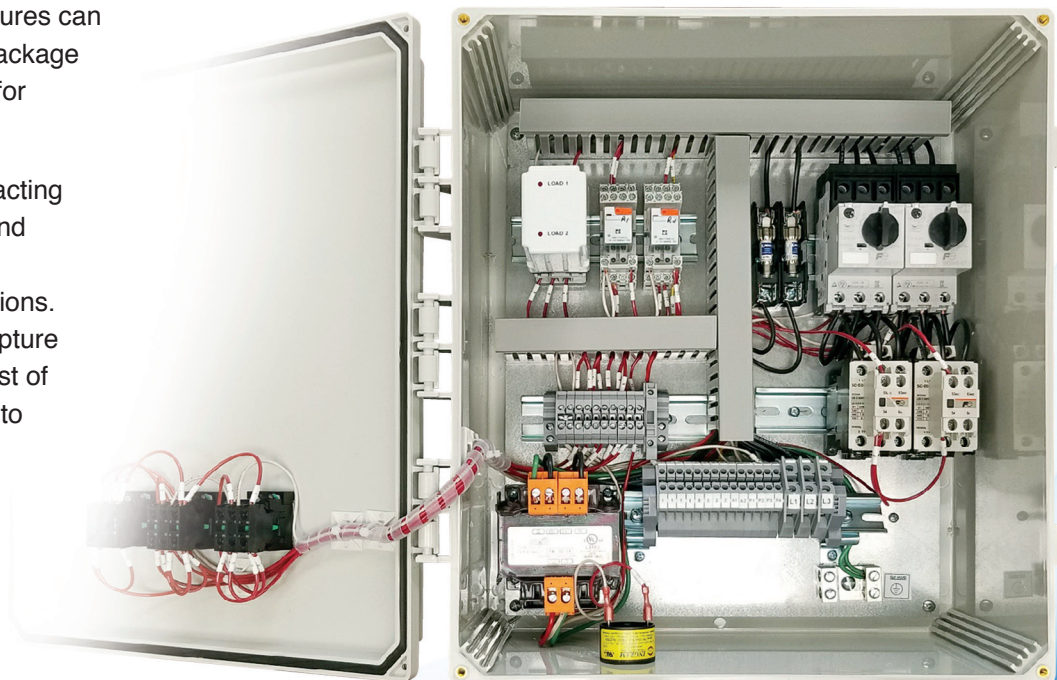


# 3-PHASE DUPLEX CONTROL PANEL

INCORPORATING AUTOMATION TO IMPROVE RELIABILITY AND SYSTEM EFFICIENCIES

G&G Controls 3-Phase Duplex panel, also sold as Stancor CB2002, provides the base for additional customization. Duplex controls provide dependable, automatic operation of two pumps. Optional features can be added to the standard package to create a unique solution for individual needs.

Newfound efficiencies, impacting both energy consumption and costs, can result from using controls to automate operations. G&G Controls helps you capture savings by providing the best of both worlds—large enough to leverage global experience and small enough to offer local service and support.



**G&G CONTROLS**

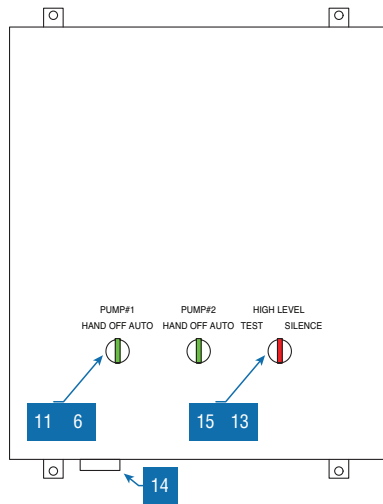
A Division of Stancor, L.P.

DEWATERING | ENVIRONMENTAL | MUNICIPAL | RESIDENTIAL

# APPLICATIONS

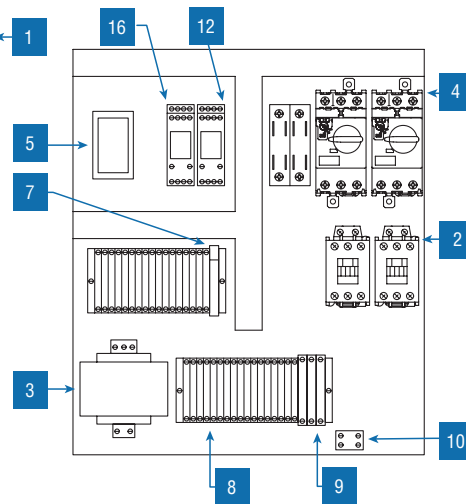
Duplex controls panels are used in a variety of applications, including construction, irrigation systems, lift stations, mining and utilities. The core design, and accompanying features, are intended to be robust enough for general purpose. Customization from this base design can then occur for specialty applications.

## FRONT COVER



Dimensions: 16 wide / 14 tall / 7 deep

## INTERIOR COMPONENTS



# FEATURES

## STANDARD COMPONENTS

- 1 16 x 14 x 7 NEMA 4X polycarbonate enclosure
- 2 IEC motor contactor
- 3 Multi-tap transformer
- 4 Motor protective switch (overload)
- 5 Alternator
- 6 Green pump run indicator lights
- 7 Alarm/Control fuse
- 8 Float switch terminal block angled for ease of field installation
- 9 Input power terminal block angled for ease of field installation
- 10 Ground lugs
- 11 HOA (Hand/Off/Auto) switches

## STANDARD ALARM PACKAGE

- 12 High level relay for dry contacts
- 13 Indicator light for visual check
- 14 Sonalert audible alarm
- 15 Exterior alarm test with silence
- 16 Horn silence relay

## ADDITIONAL OPTIONS

- High-water alarm
- Strobe lights
- Mechanical float switches 20'-120' cords
- Dry contacts for remote alarm signal
- Door-mounted hour meters
- Door-mounted interlocking disconnects
- Seal leak detection
- Stainless steel Type 4X with dead-front and inner door
- Powder Coat Type 4 with dead-front and inner door
- High alarm dry contacts