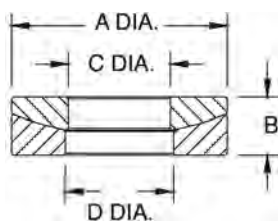


# Spherical Washer Sets



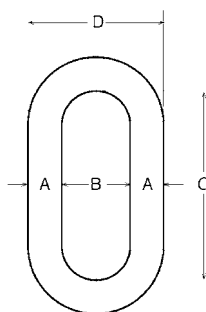
## Part Number/Price

Part #	Bolt Size	A	B	C	D	Price
<b>Mild Steel</b>						
15196	0.25 in	6.4 mm	0.62 in	15.8 mm	0.20 in	\$13.00
15197	0.38 in	9.7 mm	0.88 in	22.4 mm	0.25 in	\$16.00
15198	0.50 in	12.7 mm	1.12 in	28.5 mm	0.31 in	\$6.00
15199	0.62 in	15.8 mm	1.38 in	35.1 mm	0.31 in	\$17.00
15200	0.75 in	19.1 mm	1.62 in	41.1 mm	0.38 in	\$22.00
15201	1.00 in	25.4 mm	2.00 in	50.8 mm	0.50 in	\$35.00
15202	1.25 in	31.8 mm	2.62 in	66.6 mm	0.50 in	\$66.00
15203	1.50 in	38.1 mm	2.88 in	73.2 mm	0.53 in	\$72.00
15205	2.00 in	50.8 mm	3.88 in	98.6 mm	0.81 in	\$115.00
<b>Stainless Steel</b>						
33218	0.50 in	12.7 mm	1.12 in	28.5 mm	0.31 in	\$24.00
33220	0.75 in	19.1 mm	1.62 in	41.1 mm	0.38 in	\$34.00

# Weldless End Links

## Standard Features

- Self-colored or hot-dip galvanized
- Forged carbon steel quenched and tempered



## Part Number/Price

Part #	A	B	C	D	Safe Load*	Price
F312L	0.625 in	15.9 mm	1.00 in	25.4 mm	9,300 lb (4,218.4 kg)	\$52.00
17810	0.875 in	22.2 mm	2.00 in	50.8 mm	12,000 lb (5,443.1 kg)	\$155.00
21911	1.00 in	22.2 mm	2.25 in	57.2 mm	15,200 lb (6,894.6 kg)	\$315.00
65430	1.25 in	31.8 mm	2.50 in	63.5 mm	26,400 lb (11,974.9 kg)	\$140.00
21912	1.375 in	34.9 mm	2.75 in	69.9 mm	30,000 lb (13,607.8 kg)	\$450.00

\*Do not exceed the safe load