

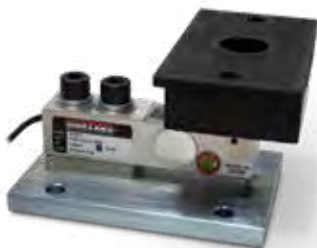
**RL50210 TA**

1,000lb-2,500lb Capacity Mini Tank Weighing Module



Available in configurations with three or four mounting assemblies.  
Picture is a representation of actual product.

The RL50210 TA weigh module kit provides a cost-effective alternative for your customers' medium-range weighing needs. A variety of features makes this kit easy to install and an exceptional choice for various indoor weighing applications where checking requirements are low. Environmentally protected load cells, neoprene isolation/compression mounts and other Rice Lake Weighing Systems components are the keys to this module's performance.



Module with RL32018 single-ended shear beam load cell; capacities (per module):  
NTEP Certified 1,000 lb (453.6 kg) load cell shown.

**Complete Kit Includes**

- Three or four shear beam load cells
- One JB4SS NEMA Type 4X stainless steel signal trim junction box
- 25 ft of our hostile environment EL147HE SURVVOR® load cell cable

**Standard Features**

- NTEP Certified load cells
- Zinc plated or Stainless assemblies
- Medium weighing ranges from 1,000-2,500 lb (453.6-1134.0 kg) per module
- Neoprene isolation mounts allow for minor misalignment, thermal expansion and shock absorption
- Overload stop provides durability
- 65059 stainless steel mounts use VPG Sensortronics 65023S NTEP Certified stainless steel load cells

**Applications**

- Small tanks and hoppers
- Conveyor/In-motion weighing
- Small platform scales where minor shock loading may be a problem

**Optional Features**

- Welded stainless steel cells available in stainless steel mounts

**Load Cell Certifications**

**Dimensions**

Rated Capacity lb/in	C	C1	H	H1	L	L1	L2	W	W1	W2	W3
1,000	0.44	—	4.00	0.50	6.00	4.00	3.00	5.13	4.00	3.00	4.13
2,000-2,500	0.44	0.56	4.00	0.50	6.00	4.00	4.62	6.25	4.00	3.00	5.00
kg/mm											
453.6	11.2	—	101.6	12.7	152.4	101.6	76.2	130.3	101.6	76.2	104.9
907.2-1,134.0	11.2	14.2	101.6	12.7	152.4	101.6	117.3	158.8	101.6	76.2	127.0

**Order Information**

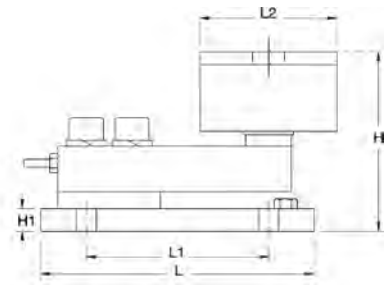
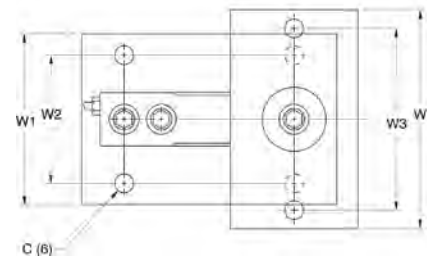
Load Rating (Per Module)*		Part#	Price
<b>Mild Steel Single Module (Includes Load Cell)</b>			
1,000 lb	453.6 kg	<b>17849</b>	\$550.00
2,000 lb	907.2 kg	<b>17948</b>	\$550.00
2,500 lb	1,134.0 kg	<b>17949</b>	\$550.00
<b>Mild Steel 3-Module Kit</b>			
1,000 lb	453.6 kg	<b>18056</b>	\$1,875.00
2,000 lb	907.2 kg	<b>30398</b>	\$1,875.00
2,500 lb	1,134.0 kg	<b>30396</b>	\$1,875.00
<b>Mild Steel 4-Module Kit</b>			
1,000 lb	453.6 kg	<b>18062</b>	\$2,400.00
2,000 lb	907.2 kg	<b>30397</b>	\$2,400.00
2,500 lb	1,134.0 kg	<b>30395</b>	\$2,400.00
<b>Stainless Steel Single Module (Includes Load Cell)</b>			
1,000 lb	453.6 kg	<b>17955</b>	\$640.00
2,000 lb	907.2 kg	<b>17956</b>	\$640.00
2,500 lb	1,134.0 kg	<b>17957</b>	\$640.00
<b>Stainless Steel 3-Module Kit</b>			
1,000 lb	453.6 kg	<b>30404</b>	\$2,020.00
2,000 lb	907.2 kg	<b>30402</b>	\$2,135.00
2,500 lb	1,134.0 kg	<b>30400</b>	\$2,135.00
<b>Stainless Steel 4-Module Kit</b>			
1,000 lb	453.6 kg	<b>30403</b>	\$2,795.00
2,000 lb	907.2 kg	<b>30401</b>	\$2,795.00
2,500 lb	1,134.0 kg	<b>30399</b>	\$2,795.00

\* Load rating is per module

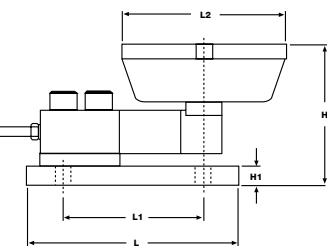
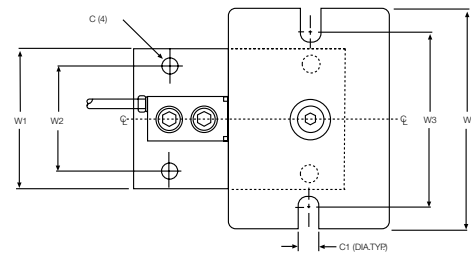
**VPG Scentroidronics® 65059 Order Information**

Load Rating (Per Module)*		Part#	Price
<b>Mild Steel Single Module (Includes Load Cell)</b>			
1,000 lb	453.6 kg	<b>17830</b>	\$550.00
2,000 lb	907.2 kg	<b>17946</b>	\$550.00
2,500 lb	1,134.0 kg	<b>17947</b>	\$550.00
<b>Mild Steel 3-Module Kit</b>			
1,000 lb	453.6 kg	<b>18068</b>	\$1,875.00
2,000 lb	907.2 kg	<b>30413</b>	\$1,875.00
2,500 lb	1,134.0 kg	<b>30412</b>	\$1,875.00
<b>Mild Steel 4-Module Kit</b>			
1,000 lb	453.6 kg	<b>18074</b>	\$2,400.00
2,000 lb	907.2 kg	<b>30414</b>	\$2,400.00
2,500 lb	1,134.0 kg	<b>30411</b>	\$2,400.00
<b>Stainless Steel Single Module (Includes Load Cell)</b>			
1,000 lb	453.6 kg	<b>17951</b>	\$640.00
2,000 lb	907.2 kg	<b>17952</b>	\$640.00
2,500 lb	1,134.0 kg	<b>17953</b>	\$640.00
<b>Stainless Steel 3-Module Kit</b>			
1,000 lb	453.6 kg	<b>30410</b>	\$2,135.00
2,000 lb	907.2 kg	<b>30408</b>	\$2,135.00
2,500 lb	1,134.0 kg	<b>30406</b>	\$2,135.00
<b>Stainless Steel 4-Module Kit</b>			
1,000 lb	453.6 kg	<b>30409</b>	\$2,795.00
2,000 lb	907.2 kg	<b>30407</b>	\$2,795.00
2,500 lb	1,134.0 kg	<b>30405</b>	\$2,795.00

\* Load rating is per module



1,000 lb (453.6 kg)



2,000 lb-2,500 lb (907.2 kg-1,134.0 kg)