

Pipe Lever Scale



Custom sizes fit your tank/hopper system for fewer modifications and less installation time.

Specifications

End Load Capacity:
100% full scale

mV/V Output:
1.50 - 1.87 mV/V nominal

Cable Length:
20 ft (6.1 m)

Warranty:
One-year limited warranty

Approvals:
NTEP CC 94-126 Model PLS-XXYY-ZZK Class III/ III-L, 5000
Measurement Canada Approved, AM-5114, Legal For Trade on sizes greater than 1.6 m, or a capacity greater than 10,000 kg

Standard Features

- Capacity range: 5,000 lb to 60,000 lb
- NTEP Certified and Measurement Canada Approved models available
- RL20000 alloy steel load cell standard (prices include load cell and ITCM load cell assembly)
- Mild steel construction, black paint finish
- Stainless steel, hermetically sealed load cells available
- Custom built

APPROVALS



Measurement
Canada
Approved



Part Number/Price

Part #	Dimensions	Est. Weight	Price
25,000 lb			
29587	62 5/8 in x 62 5/8 in	532 lb	\$3,495.00
29586	60 1/2 in x 66 in	528 lb	\$3,495.00
29588	66 1/2 in x 91 in	640 lb	\$3,495.00
29589	64 in x 64 in	538 lb	\$3,495.00
35008	62 in x 92 in	561 lb	\$3,495.00
35009	62 in x 105 in	—	\$3,495.00
40409	72 in x 72 in	618 lb	\$3,495.00
83433	64 3/4 in x 64 3/4 in	567 lb	\$3,495.00
25,000 lb Stainless Steel			
71709	62 5/8 in x 62 5/8 in	405 lb	\$7,995.00
71711	60 1/2 in x 66 in	2,080 lb	\$7,995.00
46266	66 1/2 in x 91 in	610 lb	\$7,995.00
50172	64 in x 64 in	—	\$7,995.00
50173	62 in x 92 in	—	\$7,995.00
50174	62 in x 105 in	—	\$7,995.00
40,000 lb			
39152	5 ft x 5 ft	—	\$8,095.00
39153	6 ft x 6 ft	—	\$8,095.00
39154	7 ft x 7 ft	—	\$8,095.00
39155	8 ft x 8 ft	—	\$8,095.00
39156	9 ft x 9 ft	—	\$8,095.00
39157	10 ft x 10 ft	—	\$8,095.00
50,000 lb			
39158	5 ft x 5 ft	—	\$8,095.00
39159	6 ft x 6 ft	1,875 lb	\$8,095.00
39160	7 ft x 7 ft	—	\$8,095.00
39161	8 ft x 8 ft	—	\$8,095.00
39162	9 ft x 9 ft	—	\$8,095.00
39163	10 ft x 10 ft	—	\$8,095.00

Pipe Lever Scale

Please complete and fax this form to Rice Lake Weighing Systems for pricing. Fax: (715) 234-6967

	10K Total Load*		25K Total Load*		30K Total Load*		40/50K Total Load*	
	Standard	Minimum	Standard	Minimum	Standard	Minimum	Standard	Minimum
A	—	48.00 in	—	48.00 in	—	60.00 in	—	60.00 in
B	—	48.00 in	—	48.00 in	—	60.00 in	—	60.00 in
C	12.25 in	4.50 in	15.50 in	7.00 in	15.62 in	7.00 in	18.00 in	7.00 in
D	6.00 in	6.00 in	9.50 in	8.75 in	9.50 in	8.75 in	13.00 in	12.00 in
E	6.00 in	6.00 in	9.50 in	8.75 in	9.50 in	8.75 in	13.00 in	12.00 in
F	8.62 in	8.62 in	13.56 in	13.56 in	13.81 in	13.81 in	18.18 in	18.18 in
G	4.50 in	3.50 in	6.50 in	4.75 in	6.50 in	4.75 in	9.25 in	6.50 in
H	4.50 in	3.50 in	6.50 in	4.75 in	6.50 in	4.75 in	9.25 in	6.50 in
J	24.00 in	24.00 in	32.25 in	32.25 in	32.25 in	32.25 in	37.25 in	37.25 in

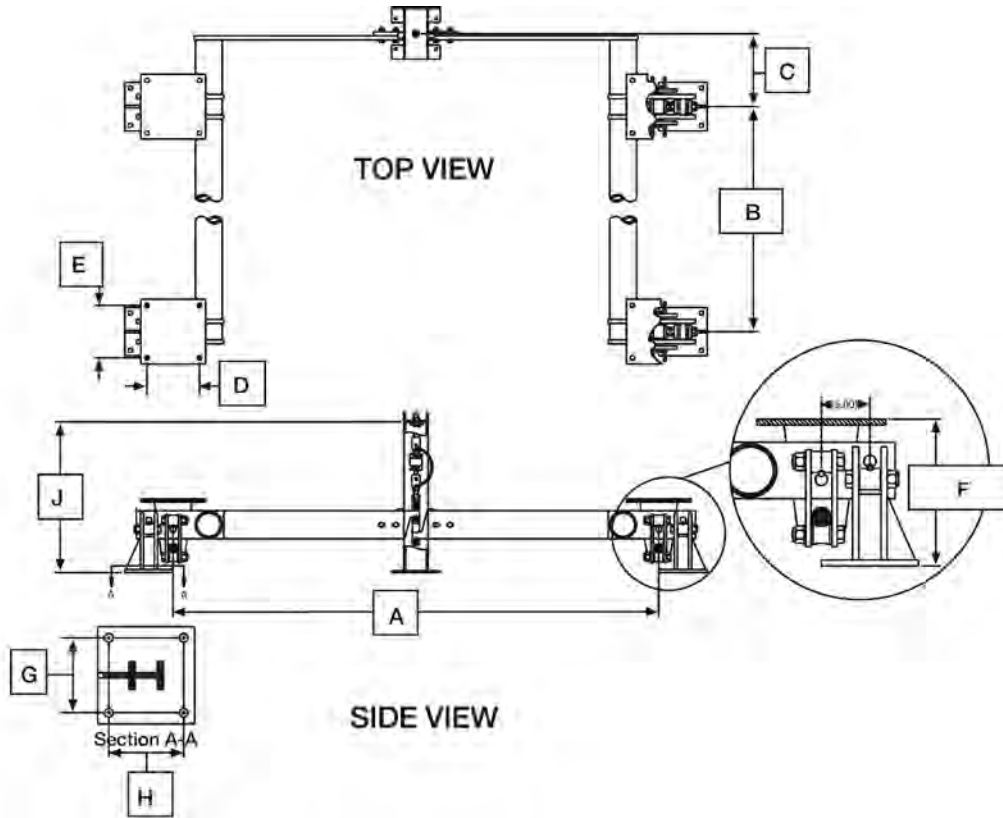
A x B must be equal to or less than 64 square feet, or consult factory.

A x B must be equal to or less than 100 square feet, or consult factory.

A x B must be equal to or less than 100 square feet, or consult factory.

A x B must be equal to or less than 100 square feet, or consult factory.

* Live and dead load



A	
B	
C	
D+	
E+	
F	
G**	
H**	
J	

+ Chair hole dimensions ** Stand hole dimensions

5,000lb Total Load***

Material Type:

10,000lb Total Load***

Finish:

25,000lb Total Load***

30,000lb Total Load***

40,000lb Total Load***

50,000lb Total Load***

Stainless steel hermetically sealed load cell (specify model number)

Mild steel load cell (specify model number)

NTEP: Yes No

*** Live and dead load

These drawings are not to be used as installation guidelines