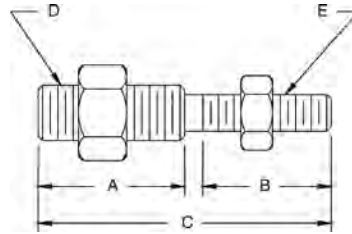


# Threaded Adaptors

## Standard Features

- For coupling isolators with load cells and steel yard rods
- Supplied with jam nuts
- Now in stronger, more durable stainless steel



## Part Number/Price

Part#	A		B		C		D	E	Safe Load*	Price
33561	—	—	—	—	2.00 in	50.8 mm	1/4-28 UNF	1/4-28 UNF	300 lb (136.1 kg)	\$26.00
33562	0.94 in	23.9 mm	0.94 in	23.9 mm	2.00 in	50.8 mm	1/4-28 UNF	1/4-20 UNC	300 lb (136.1 kg)	\$27.00
33563	0.92 in	23.3 mm	1.02 in	25.9 mm	2.06 in	52.3 mm	1/4-28 UNF	3/8-24 UNF	300 lb (136.1 kg)	\$26.00
33564	0.94 in	23.9 mm	0.94 in	23.9 mm	2.00 in	50.8 mm	1/4-28 UNF	3/8-16 UNC	300 lb (136.1 kg)	\$26.00
33565	1.06 in	26.9 mm	1.06 in	26.9 mm	2.25 in	57.2 mm	1/4-20 UNC	3/8-16 UNC	300 lb (136.1 kg)	\$28.00
33567	1.06 in	26.9 mm	1.06 in	26.9 mm	2.25 in	57.2 mm	1/4-28 UNF	1/2-13 UNC	300 lb (136.1 kg)	\$28.00
33568	—	—	—	—	2.00 in	50.8 mm	3/8-24 UNF	3/8-24 UNF	500 lb (226.8 kg)	\$37.00
33569	0.91 in	23.1 mm	0.91 in	23.1 mm	2.00 in	50.8 mm	3/8-16 UNC	3/8-24 UNF	500 lb (226.8 kg)	\$31.00
33570	1.06 in	26.9 mm	1.06 in	26.9 mm	2.25 in	57.2 mm	3/8-24 UNF	1/2-13 UNC	500 lb (226.8 kg)	\$28.00
33571	1.31 in	33.3 mm	1.31 in	33.3 mm	2.75 in	69.9 mm	1/2-13 UNC	5/8-11 UNC	3,000 lb (1,360.8 kg)	\$28.00
33572	0.87 in	22.0 mm	0.87 in	22.0 mm	2.00 in	50.8 mm	1/2-13 UNC	1/2-20 UNF	3,000 lb (1,360.8 kg)	\$31.00
33573	—	—	—	—	2.06 in	52.3 mm	1/2-20 UNF	1/2-20 UNF	3,000 lb (1,360.8 kg)	\$31.00
33574	1.31 in	33.3 mm	1.31 in	33.3 mm	2.75 in	69.9 mm	1/2-20 UNF	5/8-11 UNC	3,000 lb (1,360.8 kg)	\$34.00
33575	1.31 in	33.3 mm	1.31 in	33.3 mm	3.00 in	76.2 mm	3/4-16 UNF	3/4-10 UNC	7,000 lb (3,175.2 kg)	\$36.00

\*Do not exceed the safe load

Important: Read "Load Cell Mounting Hardware Safety Guidelines" at the beginning of this section.