

## EZ Mount 1 HE

Stainless Steel Weigh Modules, Hermetically Sealed, Rice Lake Weighing Systems



Available in configurations with three or four mounting assemblies.  
Picture is a representation of actual product.

The EZ Mount 1 HE Series weigh modules utilize the double-ended beam design with an articulating top plate to provide superior accuracy in any loading condition. The double-ended beam design means there is less cumbersome hardware and each module has a lower profile than modules of different configurations. The RL72010 MH Series load cells give you accuracy and dependability in any environment. Their stainless steel, hermetically sealed design also make them the ideal solution in harsh environments where moisture is present.



Module with RL72010MH double-ended shear beam load cell.

### Complete Kit Includes

- One JB4SS NEMA Type 4X stainless steel signal trim junction box
- Three or four EZ Mount 1 stainless steel compression mounts
- Three or four RL72010 MH hermetically sealed stainless steel double-ended shear beam load cells
- 25 ft of our hostile environment EL147HE SURVIVOR® load cell cable

### Standard Features

- Capacities (per module): 5000-60,000 lb (2268-27,216.0 kg)
- Unique sliding pin design compensates for thermal expansion/contraction
- Self-checking
- Easy load cell replacement
- Simplified design allows bolting directly to tank and floor
- Center-loaded, double-ended shear beam design
- Low-profile design
- 304 stainless steel construction

### Applications

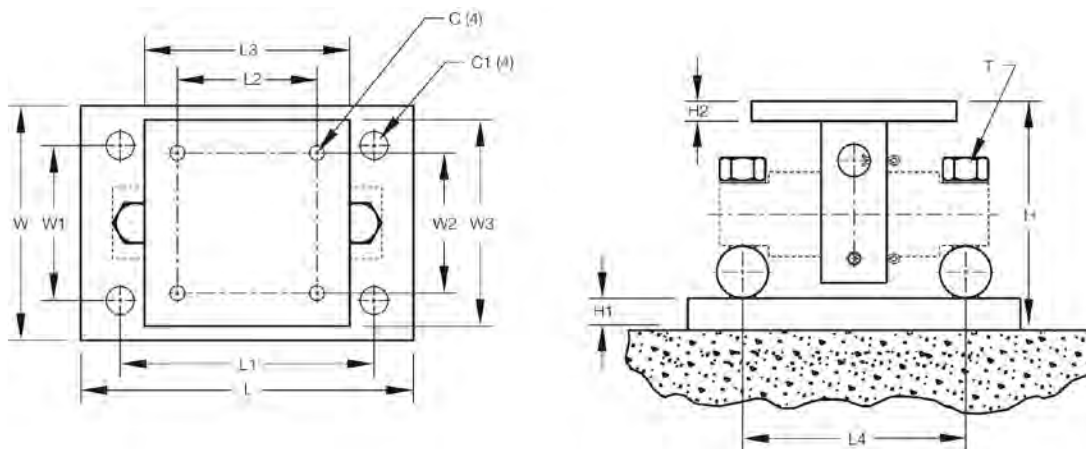
- Medium- to heavy-capacity tank and hopper weighing applications

### Load Cell Certifications



**EZ Mount 1 HE**

Stainless Steel Weigh Modules, Hermetically Sealed, Rice Lake Weighing Systems

**Dimensions**

Rated Capacity	C	C1	H	H1	H2	L	L1	L2	L3	L4	T	W	W1	W2	W3
<b>lb/in</b>															
5,000-20,000	0.56	1.06	5.31	0.75	0.50	11.00	8.00	3.00	6.00	6.87	5/8-18 UNF	7.50	4.00	3.00	6.00
30,000-60,000	0.68	1.19	8.43	1.00	0.75	15.00	11.50	5.12	8.00	8.50	1-14 UNS	10.00	6.00	5.12	8.00
<b>kg/mm</b>															
2,268.0-9,071.9	14.2	26.9	134.9	19.1	12.7	279.4	203.2	76.2	152.4	174.5	5/8-18 UNF	190.5	101.6	76.2	152.4
13,607.8-27,215.5	17.3	30.2	214.1	25.4	19.1	381.0	292.1	130.0	203.2	215.9	1-14 UNS	254.0	152.4	130.1	203.2

NOTES: Mounting bolts (T) may project on lower side of base plate. Foundation plate not included

**Order Information**

Load Rating (Per Module)	Part #	Price	
<b>3-Module Kit</b>			
5,000 lb	2,268.0 kg	<b>46695</b>	\$5,795.00
10,000 lb	4,535.9 kg	<b>46696</b>	\$5,795.00
20,000 lb	9,071.9 kg	<b>46697</b>	\$5,795.00
30,000 lb	13,607.8 kg	<b>46698</b>	\$11,095.00
40,000 lb	18,143.7 kg	<b>46699</b>	\$11,095.00
50,000 lb	22,679.6 kg	<b>46700</b>	\$11,095.00
60,000 lb	27,215.5 kg	<b>46701</b>	\$11,095.00
<b>4-Module Kit</b>			
5,000 lb	2,268.0 kg	<b>46702</b>	\$7,795.00
10,000 lb	4,535.9 kg	<b>46703</b>	\$7,795.00
20,000 lb	9,071.9 kg	<b>46704</b>	\$7,795.00
30,000 lb	13,607.8 kg	<b>46705</b>	\$14,500.00
40,000 lb	18,143.7 kg	<b>46706</b>	\$14,500.00
50,000 lb	22,679.6 kg	<b>46707</b>	\$14,500.00
60,000 lb	27,215.5 kg	<b>46708</b>	\$14,500.00
<b>Dummy Load Cells (Mild Steel)</b>			
5,000 lb-20,000 lb	2,268.0 kg-9,071.9 kg	<b>33749</b>	\$78.00
30,000 lb-60,000 lb	13,607.8 kg-27,215.5 kg	<b>74016</b>	\$100.00
<b>Grounding Kit</b>			
5,000 lb-60,000 lb		<b>126419</b>	\$18.00

Includes ground strap and mounting hardware

Please contact factory for pricing and availability

**Shims**

	Part #	Price
<b>5,000 lb-20,000 lb, Stainless Steel</b>		
0.0625 in	<b>150886</b>	\$7.25
0.125 in	<b>150888</b>	\$11.50
0.250 in	<b>150889</b>	\$24.00
<b>30,000 lb-60,000 lb, Stainless Steel</b>		
0.0625 in	<b>150890</b>	\$12.75
0.125 in	<b>150891</b>	\$20.50
0.250 in	<b>150892</b>	\$57.00
<b>100,000 lb-150,000 lb, Stainless Steel</b>		
0.0625 in	<b>150893</b>	\$20.25
0.125 in	<b>150894</b>	\$32.50
0.250 in	<b>150896</b>	\$89.00
<b>5,000 lb-20,000 lb, Mild Steel</b>		
0.0625 in	<b>150874</b>	\$1.75
0.125 in	<b>150876</b>	\$3.50
0.250 in	<b>150877</b>	\$3.75
<b>30,000 lb-60,000 lb, Mild Steel</b>		
0.0625 in	<b>150878</b>	\$3.50
0.125 in	<b>150880</b>	\$6.00
0.250 in	<b>150881</b>	\$6.50
<b>100,000 lb-150,000 lb, Mild Steel</b>		
0.0625 in	<b>150882</b>	\$5.50
0.125 in	<b>150884</b>	\$9.50
0.250 in	<b>150885</b>	\$10.25