

WEIGH MODULES

RL2200 SS Series

Stainless Steel, Tank, Hopper and Vessel Weighing Assembly



Available in configurations with three or four mounting assemblies.
Picture is a representation of actual product.

The RL2200 SS Series mounts are ideal for use in tank, hopper, vessel and many other applications. The low-profile design allows for economical solutions in a competitive marketplace. This rugged, high-precision mount is designed for easy installation and does not require check rods or other stabilizing hardware. The RL2200 SS mount has the added feature of self centering, allowing for side loads without sacrificing performance.

Specifications

- Full Scale Output:**
4.0 mV/V, 2.0 mV/V (2,500 lb)
- Bridge Resistance:**
350 ohms nominal
- Material/Finish:**
Stainless steel
- Safe Overload:**
150% Full Scale
- Rated Excitation:**
5-10 VDC (20 V maximum)
- Nonlinearity:**
0.05% Full Scale
- Hysteresis:**
0.03% Full Scale
- Temperature:**
Compensated range:
15°F to 115°F/9°C to 46°C
- Insulation Resistance:**
5,000 megohms
- Seal Type:**
Hermetically sealed, IP66/68
- *Cable Length:**
30 ft/9.1 m
- Cable Color Code:**
Red.....+ Excitation
Black.....- Excitation
White+ Signal
Green- Signal
- Warranty:**
Two-year limited warranty
- *Compression load application*



Assembly with integral RL2200 SS compression disk load cell.

Complete Kit Includes

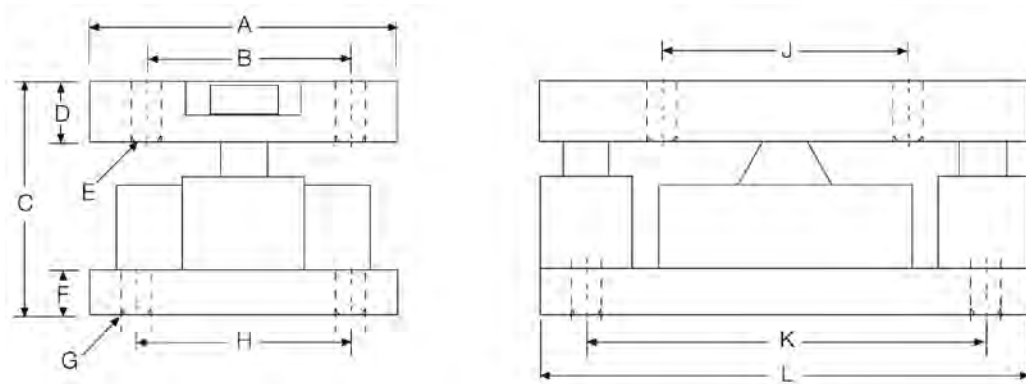
- One JB4SS NEMA Type 4X stainless steel signal trim junction box
- Three or four RL2200 stainless steel mounting assemblies
- Three or four RL2200 SS stainless steel, hermetically sealed, compression disk load cells
- 25 ft of our hostile environment EL147HE SURVIVOR® load cell cable

Applications

- Tank, hopper or vessel weighing
- Belt or roller conveyors
- Scale platforms and screw feeders

RL2200 SS Series

Stainless Steel, Tank, Hopper and Vessel Weighing Assembly

**Dimensions**

Rated Capacity	A	B	C	D	E	F	G	H	J	K	L
lb/in											
2,500-10,000	5.00	3.50	4.00	1.00	0.52	1.00	0.52	3.50	4.00	6.50	8.00
25,000-50,000	6.00	4.50	5.00	1.25	0.78	1.00	0.78	4.50	5.00	7.75	10.00
kg/mm											
1,134.0-4,536.0	127.0	88.9	101.6	25.4	13.2	19.0	13.2	88.9	101.6	165.1	203.2
11,340.0-22,679.6	152.4	114.3	127.0	31.7	19.8	25.4	19.8	114.3	127.0	196.8	254.0

Order Information

Load Rating (Per Module)	Part#	Price	
Single Module			
2,500 lb	1,134 kg	76657	\$2,435.00
5,000 lb	2,268 kg	45845	\$2,435.00
10,000 lb	4,536 kg	45844	\$2,435.00
25,000 lb	11,340 kg	45843	\$4,115.00
50,000 lb	22,680 kg	45842	\$4,115.00
3-Module Kit			
2,500 lb	1,134 kg	76899	\$6,915.00
5,000 lb	2,268 kg	46478	\$6,915.00
10,000 lb	4,536 kg	46479	\$6,915.00
25,000 lb	11,340 kg	46480	\$12,050.00
50,000 lb	22,680 kg	46481	\$12,050.00
4-Module Kit			
2,500 lb	1,134 kg	76900	\$9,145.00
5,000 lb	2,268 kg	46482	\$9,145.00
10,000 lb	4,536 kg	46483	\$9,145.00
25,000 lb	11,340 kg	46484	\$15,715.00
50,000 lb	22,680 kg	46485	\$15,715.00

Replacement Load Cell Order Information

Load Rating (Per Module)	Part #	Price	
2,500 lb	1,134 kg	76655	\$1,475.00
5,000 lb	2,268 kg	45712	\$1,475.00
10,000 lb	4,536 kg	45713	\$1,475.00
25,000 lb	11,340 kg	45714	\$2,420.00
50,000 lb	22,680 kg	45715	\$2,420.00