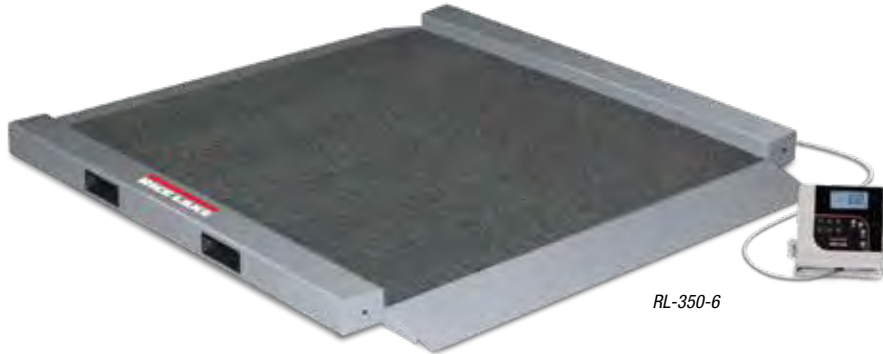


RL-350-6 Dual-ramp Portable Bariatric Wheelchair Scale

34 Inches Wide



Specifications

Capacity:

1,000 lb x 0.2 lb (450 kg x 0.1 kg)

Platform Dimensions:

(W x L x H) 34 in x 34 in x 2.22 in

Power:

9 VDC, provided by six AA alkaline batteries (included) or AC adaptor (optional)

Battery Type:

Six AA alkaline (included)

Battery Use:

25 hours continuous use with batteries
Automatic power-off can be configured

Operating Temperature:

50° F to 104° F (14° C to 40° C)

Display:

5-digit LCD display, 0.75 in (1.9 mm) digit height

Approvals:

c-Met (pending)

Warranty:

Two-year limited warranty

Standard Features

- Dual ramp for on/off access
- Integrated handles and wheels for easy transport
- Large, stable scale base
- Push-button LCD display
- BMI (body mass index) function
- Hold function
- Ability to manually enter the tare weight of additional items, such as a wheelchair or oxygen tank
- Units of measure: lb only, kg only, lb/kg
- Motiontrap™ movement compensation technology
- EHR capable
- 10 ft cable between scale base and indicator

Part Number/Price

Part #	Model #	Capacity	Price
150704	RL-350-6	1,000lb x 0.2lb (450 kg x 0.1 kg) with USB	\$1,681.00
168358	RL-350-6BT	1,000lb x 0.2lb (450 kg x 0.1 kg) with USB and Bluetooth® 2.0	\$1,771.00

Shipping Weight

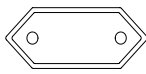
Part #	Model #	L (in)	W (in)	H (in)	Package Wgt. (lb)	Dim Wgt. (lb)	Shipping Wgt. (lb)
150704	RL-350-6	43	43	11	154	147	154
168358	RL-350-6BT	43	43	11	154	147	154

Options/Accessories

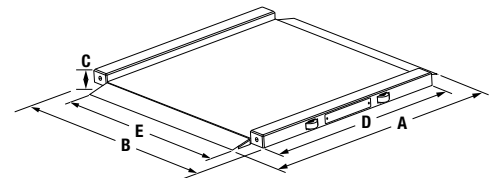
Part #	Description	Price
133077 †	9 VDC adaptor, 120 V/230V auto switching	\$15.00
102508 ††	9 VDC adaptor, 230 V	\$20.00
81076	Epson TM-U220 tape printer	\$420.00
186830	Printer cable, 25-pin D-Sub male to RJ-45, 6 ft	\$65.00



† NEMA 1-15 Plug



†† CEE 7/16 Plug



Dimensions

	Inches	Centimeters
A	41	104.1
B	40	101.6
C	2.22	5.6
D	34	86.4
E	34	86.4