

RL50210 TA

50lb-500lb Capacity Mini Tank Weighing Module



Available in configurations with three or four mounting assemblies.
Picture is a representation of actual product.

The RL50210 TA weigh module kit provides a cost-effective alternative for your customers' low-range weighing needs. A variety of features makes this kit easy to install and an exceptional choice for various indoor weighing applications where checking requirements are low. Environmentally protected load cells, neoprene isolation/compression mounts and other Rice Lake Weighing Systems components are the keys to this module's outstanding performance.

Module with RL50210 or RL50210SS cantilever beam load cell; capacities (per module): 50 lb (22.7 kg), 100 lb (45.4 kg), 150 lb (68.0 kg) and 250 lb (113.4 kg). 500 lb model features RL30000 single-ended beam load cell.



RL50210 TA mild steel (50lb-250lb)

Complete Kit Includes

- One JB4SS NEMA Type 4X stainless steel signal trim junction box
- Three or four RL50210 cantilever beam load cells (50-250 lb models)
- Three or four RL30000 single-ended beam load cells (500 lb models)
- Three or four neoprene isolation/compression mounts
- 25 ft of our hostile environment EL147HE SURVIVOR® load cell cable

Standard Features

- Zinc plated, mild steel modules
- Lower weighing ranges from 50-500 lb (22.7-226.8 kg) per module
- Environmentally protected load cells
- Neoprene isolation/compression mounts allow for minor misalignment, thermal expansion and shock absorption
- Overload stop for 500 lb (226.8 kg) modules provides durability

Applications

- Small tanks and hoppers
- Conveyor/In-motion weighing
- Small platform scales where minor shock loading may be a problem

Optional Features

- Stainless steel modules available in 500 lb (226.8 kg) capacities with RL39123 stainless steel load cells or VPG Sensortronics® 65023 SS load cells
- 65059 kits available with VPG Sensortronics 60040 load cells, capacities: 50 lb-250 lb (22.7 kg-113.4 kg) or 65023 load cells, capacity: 500 lb (226.8 kg)

Load Cell Certifications



Dimensions

Rated Capacity	C	C1	H	H1	L	L1	L2	W	W1	W2	W3
lb/in											
50-250	0.34	—	3.13	0.50	4.00	3.25	2.38	3.88	3.00	2.25	—
500	0.44	0.56	3.88	0.50	6.00	4.00	3.38	5.50	4.00	3.00	4.13
kg/mm											
22.7-113.4	8.6	—	79.5	12.7	101.6	82.6	60.5	98.6	76.2	57.2	—
226.8	11.2	14.2	98.6	12.7	152.4	101.6	85.9	139.7	101.6	76.2	104.9

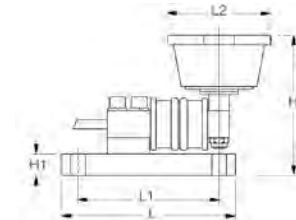
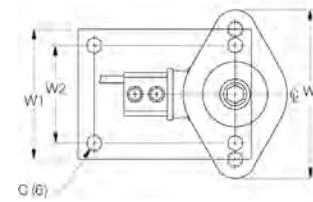
Order Information

Load Rating (Per Module)*	Part#	Price
Mild Steel Single Module (Includes Load Cell)		
50 lb	17844	\$415.00
100 lb	17845	\$415.00
150 lb	17846	\$415.00
250 lb	17847	\$415.00
500 lb	17848	\$550.00
Mild Steel 3-Module Kit		
50 lb	18051	\$1,450.00
100 lb	18052	\$1,450.00
150 lb	18053	\$1,450.00
250 lb	18054	\$1,450.00
500 lb	18055	\$1,875.00
Mild Steel 4-Module Kit		
50 lb	18057	\$1,865.00
100 lb	18058	\$1,865.00
150 lb	18059	\$1,865.00
250 lb	18060	\$1,865.00
500 lb	18061	\$2,375.00
Stainless Steel Single Module (Includes Load Cell)		
500 lb	17954	\$640.00
Stainless Steel 3-Module Kit		
500 lb	30394	\$2,135.00
Stainless Steel 4-Module Kit		
500 lb	30393	\$2,795.00

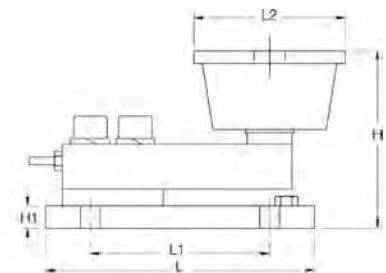
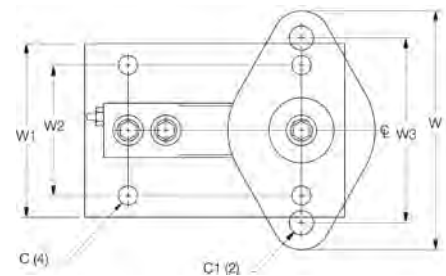
VPG Sentionics 65059 Order Information

Load Rating (Per Module)*	Part#	Price
Mild Steel Single Module (Includes Load Cell)		
50 lb	17825	\$415.00
100 lb	17826	\$415.00
150 lb	17827	\$415.00
250 lb	17828	\$415.00
500 lb	17829	\$550.00
Mild Steel 3-Module Kit		
50 lb	18063	\$1,450.00
100 lb	18064	\$1,450.00
150 lb	18065	\$1,450.00
250 lb	18066	\$1,450.00
500 lb	18067	\$1,875.00
Mild Steel 4-Module Kit		
50 lb	18069	\$1,865.00
100 lb	18070	\$1,865.00
150 lb	18071	\$1,865.00
250 lb	18072	\$1,865.00
500 lb	18073	\$2,375.00
Stainless Steel Single Module (Includes Load Cell)		
500 lb	17950	\$640.00
Stainless Steel 3-Module Kit		
500 lb	30392	\$2,135.00
Stainless Steel 4-Module Kit		
500 lb	30391	\$2,795.00

* Load rating is per module



50-250 lb (22.7-113.4 kg)



500 lb (226.8 kg)