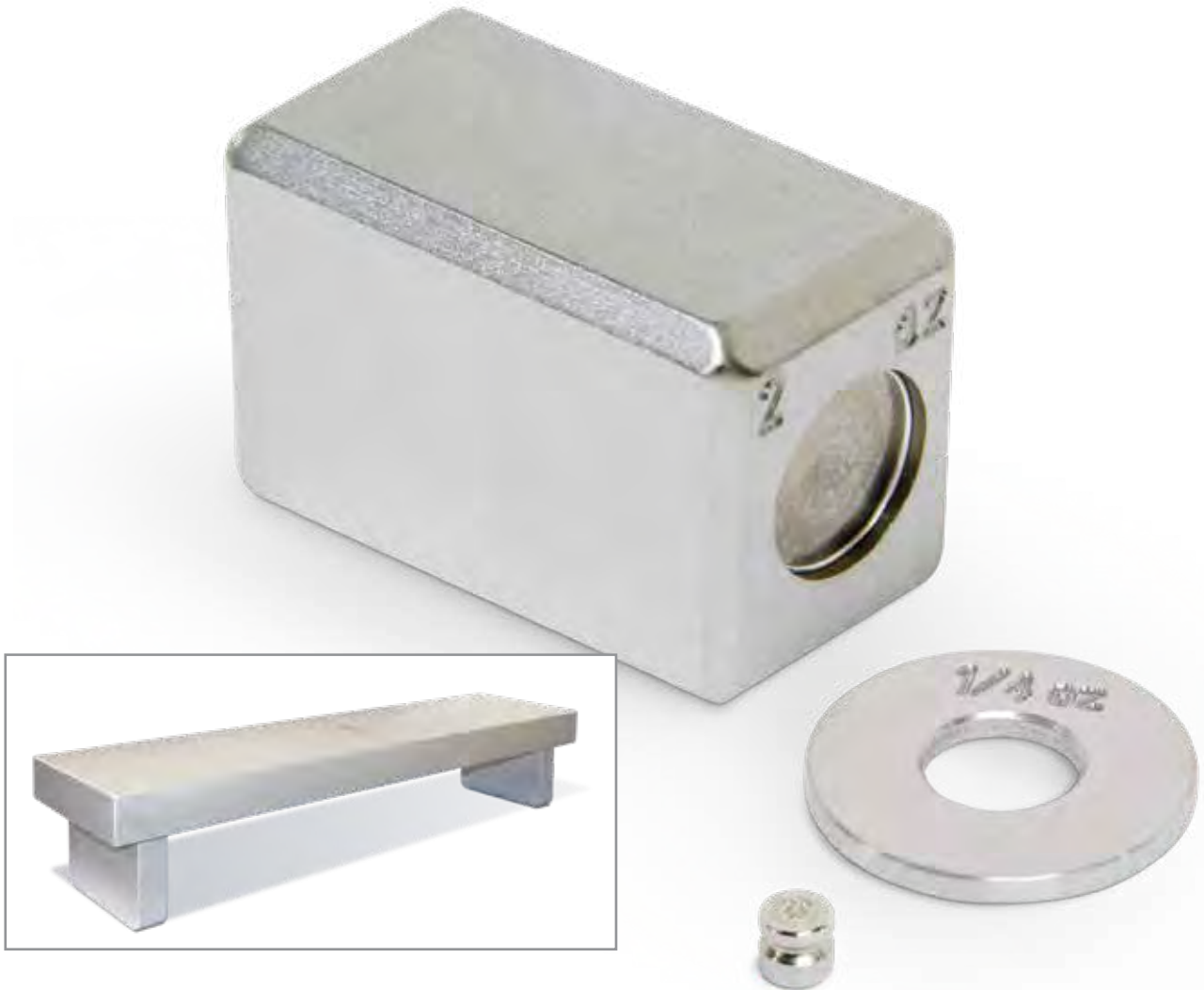


# SPECIALTY WEIGHTS

Unique weights designed or built for custom applications or tolerances

## ASTM



### Applications:

- Tolerance test or checking
- Equipment verification in unique units of measurement
- Slotted weights for suspended verification of weight
- Forklift weights for forklift scale calibration

### Styles Available:

- Cube
- Ring
- Lift truck weights
- Hook weights
- Stainless steel slotted weights

### Unique Units of Measures:

- Pennyweight
- Grain
- Troy ounce

### Features:

- Nominal value marked on weights
- Cavity for adjustment
- Cube weight sets designed as sealer's kits for calibration adjustments

# Metric Cube and Ring Weights; Avoirdupois Ring Weights

Cube Class 5						Optional
Weight	Part #	Width	Length	Height	Price	Accredited Certificate
2 lb	12649	2.4 in (61 mm)	1 in (25.4 mm)	3 in (76.2 mm)	\$139.00	\$65.00
1 lb	12651	1.2 in (30.5 mm)	1 in (25.4 mm)	3 in (76.2 mm)	\$129.00	\$65.00
8 oz	12653	1 9/10 in (48.3 mm)	1 in (25.4 mm)	1 in (25.4 mm)	\$110.00	\$55.00
2 oz	12658	0.70 in (17.8 mm)	0.60 in (15.2 mm)	1 in (25.4 mm)	\$79.00	\$55.00
4 oz	12655	73/100 in (18.5 mm)	1 in (25.4 mm)	309/1000 in (33.3 mm)	\$90.00	\$55.00
1 kg	12557	1 in (25.4 mm)	3 3/8 in (85.6 mm)	2 1/2 in (62.8 mm)	\$139.00	\$55.00
500 g	12552	1 in (25.4 mm)	3 13/32 in (86.5 mm)	1 1/4 in (31.8 mm)	\$110.00	\$55.00
300 g	12547	2 1/32 in (51.6 mm)	1 1/4 in (31.8 mm)	1 in (25.4 mm)	\$100.00	\$55.00
200 g	12544	1 1/4 in (31.0 mm)	1 3/8 in (34.8 mm)	1 in (25.4 mm)	\$90.00	\$55.00
100 g	12541	3/4 in (19.1 mm)	1 7/32 in (31.0 mm)	1 in (25.4 mm)	\$79.00	\$40.00

Ring Class 5						Optional
Weight	Part #	Outside Dia.	Height	Inside Dia.	Price	Accredited Certificate
500 g	12566	3 in (76.2 mm)	37/64 in (14.7 mm)	25/64 in (9.9 mm)	\$120.00	\$55.00
200 g	12563	2 in (50.8 mm)	17/32 in (13.5 mm)	25/64 in (9.9 mm)	\$95.00	\$55.00
100 g	12561	1 1/2 in (38.1 mm)	1/2 in (12.7 mm)	25/64 in (9.9 mm)	\$79.00	\$40.00
50 g	12560	1 1/2 in (38.1 mm)	1/4 in (6.4 mm)	25/64 in (9.9 mm)	\$68.00	\$40.00
25 g	12559	1 in (25.4 mm)	5/16 in (7.9 mm)	25/64 in (9.9 mm)	\$53.00	\$40.00

Ring Class 5						Optional
Weight	Part #	Outside Dia.	Height	Inside Dia.	Price	Accredited Certificate
5 lb	12672	4 in (101.6 mm)	1 7/16 in (36.5 mm)	25/64 in (9.9 mm)	\$105.00	\$80.00
3 lb	12671	3 in (76.2 mm)	1 35/64 in (36.3 mm)	25/64 in (9.9 mm)	\$85.00	\$80.00
2 lb	12670	3 in (76.2 mm)	1 1/32 in (26.2 mm)	25/64 in (9.9 mm)	\$68.00	\$65.00
1 lb	12669	3 in (76.2 mm)	33/64 in (13.1 mm)	25/64 in (9.9 mm)	\$68.00	\$65.00
8 oz	12668	2 in (50.8 mm)	39/64 in (15.5 mm)	25/64 in (9.9 mm)	\$33.00	\$40.00
4 oz	12667	1 1/2 in (38.1 mm)	9/16 in (14.3 mm)	25/64 in (9.9 mm)	\$33.00	\$40.00
2 oz	12666	1 1/2 in (38.1 mm)	9/32 in (7.1 mm)	25/64 in (9.9 mm)	\$33.00	\$40.00
1 oz	12665	1 in (25.4 mm)	11/32 in (8.7 mm)	25/64 in (9.9 mm)	\$33.00	\$40.00
1/2 oz	12664	1 in (25.4 mm)	11/64 in (4.4 mm)	25/64 in (9.9 mm)	\$63.00	\$40.00
1/4 oz	12663	1 in (25.4 mm)	3/32 in (2.4 mm)	25/64 in (9.9 mm)	\$85.00	\$40.00

Additional Accessories		
Part #	Description	Price
36092	Statement of Accuracy	\$45.00
25836	Serial number	\$16.00



## Troy Cylindrical/Leaf Weights

Troy Ounce Class 5					Optional
Weight	Part #	Height	Diameter	Price	Accredited Certificate
500 oz t	12719	6 5/16 in (160.3 mm)	5 in (127.0 mm)	\$1,025.00	\$80.00
200 oz t	12718	3 3/4 in (95.3 mm)	4 25/32 in (121.4 mm)	\$448.00	\$80.00
100 oz t	12717	3 13/16 in (96.1 mm)	3 in (75.4 mm)	\$268.00	\$80.00
50 oz t	12716	2 5/8 in (66.7 mm)	2 21/32 in (67.5 mm)	\$155.00	\$80.00
20 oz t	12715	2 1/4 in (56.6 mm)	1 3/4 in (44.1 mm)	\$79.00	\$65.00
10 oz t	12714	1 3/8 in (34.9 mm)	1 29/32 in (48.4 mm)	\$64.00	\$40.00
5 oz t	12713	1 3/16 in (30.2 mm)	1 13/32 in (35.7 mm)	\$64.00	\$40.00
2 oz t	12712	7/8 in (22.2 mm)	31/32 in (24.6 mm)	\$37.00	\$40.00
1 oz t	12711	7/8 in (21.2 mm)	5/8 in (15.9 mm)	\$34.00	\$40.00
1/4 oz t	12709	11/16 in (16.8 mm)	3/8 in (9.1 mm)	\$42.00	\$40.00
1/8 oz t	12708	5/16 in (7.9 mm)	15/32 in (11.9 mm)	\$42.00	\$40.00
1/16 oz t	12707	3/8 in (9.1 mm)	1/4 in (6.2 mm)	\$42.00	\$40.00
1/32 oz t	12706	5/16 in (7.7 mm)	3/16 in (4.7 mm)	\$42.00	\$40.00
0.5 oz t	12705	1/2 in (12.7 mm)	23/32 in (18.3 mm)	\$42.00	\$40.00
0.2 oz t	12704	1/2 in (12.6 mm)	3/8 in (9.3 mm)	\$42.00	\$40.00
0.1 oz t	12703	5/16 in (7.9 mm)	13/32 in (10.3 mm)	\$42.00	\$40.00
0.05 oz t*	12702	1/4 in (6.4 mm)	11/32 in (8.7 mm)	\$42.00	\$40.00
0.02 oz t*	12701	W x L (0.375 in x 0.287 in)	-	\$32.00	\$40.00
0.01 oz t*	12700	W x L (0.312 in x 0.270 in)	-	\$32.00	\$40.00
0.005 oz t*	12699	W x L (0.25 in x 0.22 in)	-	\$32.00	\$40.00

\* Leaf weights



Troy PN 12711

Leaf weights not pictured

# Pennyweight Cylindrical and Leaf, and Grain Weights

Pennyweight Class 5			Optional
Weight	Part #	Price	Accredited Certificate
20 dwt	12698	\$68.00	\$40.00
10 dwt	12697	\$68.00	\$40.00
5 dwt	12696	\$68.00	\$40.00
2 dwt	12695	\$68.00	\$40.00
1 dwt	12694	\$68.00	\$40.00

Pennyweight Leaf Class 5			Optional
Weight	Part #	Price	Accredited Certificate
0.5 dwt	12693	\$60.00	\$40.00
0.2 dwt	12692	\$60.00	\$40.00
0.1 dwt	12691	\$60.00	\$40.00

Grain Class 5			Optional
Weight	Part #	Price	Accredited Certificate
1 GN	12726	\$22.00	\$40.00
2 GN	12727	\$25.00	\$40.00
10 GN	12733	\$25.00	\$40.00
20 GN	12736	\$32.00	\$40.00

Additional Accessories		
Part #	Description	Price
36092	Statement of Accuracy	\$45.00
25836	Serial number	\$16.00



Leaf PN 12693

# Specialty Weights/Cube Weights Sets

CALIBRATION WEIGHTS

www.ricelake.com | Phone: 800-472-6703

RICE LAKE

Cube Weight Sets Avoirdupois Class 5				Optional	Replacement Cases	
Set Size	Part #	Price	Accredited Certificate		Part #	Price
8 oz - 1/16 oz	12630	\$289.00		\$230.00	11510	\$32.00
(3) 2 lb - 1/16 oz	12652	\$855.00		\$379.00	11569	\$190.00
(3) 2 lb - .001 lb	12659	\$965.00		\$457.00	11569	\$190.00
(14) 2 lb - 1/16 oz	12585	\$1,405.00		\$918.00	40783	\$305.00

Cube Weight Sets Metric				Optional	Replacement Cases	
Set Size	Part #	Price	Accredited Certificate		Part #	Price
300 g - 10 g	12545	\$295.00		\$280.00	11510	\$32.00
(14) 1 kg - 1 mg	12553*	\$1,947.00		\$999.00	40783	\$305.00
(3) 1 kg - 1 mg	12555*	\$1,215.00		\$645.00	11569	\$190.00

Weight Set Contents						
300 g - 10 g	8 oz - 1/16 oz	2 lb - 1/16 oz	2 lb - 0.001 lb	2 lb - 1/16 oz	1 kg - 1 mg	1 kg - 1 mg
1 - 300g*	1 - 8 oz*	3 - 2 lb*	3 - 2 lb*	14 - 2 lb*	14 - 1 kg*	3 - 1 kg*
1 - 200g*	1 - 4 oz*	1 - 1 lb*	1 - 1 lb*	2 - 1 lb*	2 - 500g*	1 - 500g*
1 - 100g*	1 - 2 oz*	1 - 8 oz*	1 - 0.3 lb	1 - 8 oz*	1 - 300g*	1 - 300g*
1 - 50 g	1 - 1 oz	1 - 4 oz*	1 - 0.2 lb	1 - 4 oz*	1 - 200g*	1 - 200g*
1 - 30 g	1 - 1/2 oz	1 - 2 oz*	1 - 0.1 lb	1 - 2 oz*	1 - 100g*	1 - 100g*
1 - 20 g	1 - 1/4 oz	1 - 1 oz	1 - 0.05 lb	1 - 1 oz	1 - 50 g	1 - 50 g
1 - 10 g	1 - 1/8 oz	1 - 1/2 oz	1 - 0.03 lb	1 - 1/2 oz	1 - 30 g	1 - 30 g
-	2 - 1/16 oz	1 - 1/4 oz	1 - 0.02 lb	1 - 1/4 oz	1 - 20 g	1 - 20 g
-	-	1 - 1/8 oz	1 - 0.01 lb	1 - 1/8 oz	1 - 10 g	1 - 10 g
-	-	2 - 1/16 oz	1 - 0.005 lb	2 - 1/16 oz	1 - 5 g	1 - 5 g
-	-	-	1 - 0.003 lb	-	1 - 3 g	1 - 3 g
-	-	-	1 - 0.002 lb	-	1 - 2 g	1 - 2 g
-	-	-	2 - 001 lb	-	1 - 1 g	1 - 1 g
-	-	-	-	-	1 - 500 mg	1 - 500 mg
-	-	-	-	-	1 - 300 mg	1 - 300 mg
-	-	-	-	-	1 - 200 mg	1 - 200 mg
-	-	-	-	-	1 - 100 mg	1 - 100 mg
-	-	-	-	-	1 - 50 mg	1 - 50 mg
-	-	-	-	-	1 - 30 mg	1 - 30 mg
-	-	-	-	-	1 - 20 mg	1 - 20 mg
-	-	-	-	-	1 - 10 mg	1 - 10 mg
-	-	-	-	-	1 - 5 mg	1 - 5 mg
-	-	-	-	-	1 - 3 mg	1 - 3 mg
-	-	-	-	-	1 - 2 mg	1 - 2 mg
-	-	-	-	-	1 - 1 mg	1 - 1 mg
<b>Piece Count</b>						
7	9	13	16	25	39	27
<b>Total Weight</b>						
710 g	1 lb	8 lb	7.72 lb	31 lb	15,722.221 g	4,222.221 g
<b>Part #</b>						
12545	12630	12652	12659	12585	12553	12555

\*Cube Weight

Case Insert		
Size	Part #	Price
300 g - 10 g	11526	\$34.00
5 g - 1 mg	11527	\$32.00
(2) 50 g - 1 mg	11528	\$34.00
1 kg - 1 mg	11526	\$34.00
(3) 1 kg - 1 mg	11526	\$34.00

Additional Accessories		
Part #	Description	Price
36092	Statement of Accuracy	\$45.00
11758	Leaf weight cover	\$37.00
65640	Tweezer	\$17.00
25836	Serial number	\$16.00
152414	Premium tweezer	\$37.00

# Avoirdupois and Metric Individual Hook Weights

Hook Weights Metric Class 6						Optional
Weight	Part #	Diameter	Hanging Height	Opening Diameter	Price	Accredited Certificate
25 kg	12720	5 31/32 in (151.6 mm)	9 3/16 in (233.4 mm)	1/4 in (6.4 mm)	\$805.00	\$75.00
20 kg	12725	5 31/32 in (151.6 mm)	8 3/8 in (212.7 mm)	1/4 in (6.4 mm)	\$790.00	\$75.00
10 kg	12732	4 in (101.6 mm)	9 1/16 in (230.2 mm)	1/4 in (6.4 mm)	\$545.00	\$75.00
5 kg	12735	3 3/4 in (95.3 mm)	6 11/32 in (161.1 mm)	1/4 in (6.4 mm)	\$268.00	\$75.00
4 kg	161608	3 1/2 in (89 mm)	6.12 in (155 mm)	1/4 in (6.4 mm)	\$263.00	\$75.00
3 kg	96403	2 5/8 in (66.7 mm)	5 1/16 in (128.6 mm)	1/4 in (6.4 mm)	\$252.00	\$75.00
2 kg	12739	2 5/8 in (66.8 mm)	5 17/32 in (135.7 mm)	1/4 in (6.4 mm)	\$190.00	\$75.00
1 kg	12744	2 in (50.8 mm)	5 3/8 in (136.5 mm)	1/4 in (6.4 mm)	\$105.00	\$55.00
500 g	12747	1 5/8 in (41.3 mm)	4 1/2 in (114.3 mm)	5/32 in (4.0 mm)	\$89.00	\$55.00
300 g	96404	1 1/4 in (31.8 mm)	4 1/2 in (114.3 mm)	5/32 in (4.0 mm)	\$89.00	\$55.00
200 g	12748	1 1/8 in (28.6 mm)	3 in (76.2 mm)	3/32 in (2.4 mm)	\$89.00	\$55.00
100 g	12749	1 in (25.4 mm)	2 3/8 in (60.3 mm)	3/32 in (2.4 mm)	\$79.00	\$40.00
50 g	12750	3/4 in (19.1 mm)	2 1/4 in (57.2 mm)	3/32 in (2.4 mm)	\$79.00	\$40.00
30 g	96405	5/8 in (15.9 mm)	2 1/8 in (54.0 mm)	3/32 in (2.4 mm)	\$79.00	\$40.00
20 g	12751	5/8 in (15.9 mm)	2 1/8 in (54.0 mm)	3/32 in (2.4 mm)	\$79.00	\$40.00
10 g	12754	1/2 in (12.7 mm)	2 in (50.8 mm)	3/32 in (2.4 mm)	\$58.00	\$40.00

Hook (Only) Weight						
5g	12757	1/8 in (3.2 mm)	2 5/32 in (54.8 mm)	3/16 in (4.7 mm)	\$53.00	\$40.00
3g	96406	3/32 in (2.4 mm)	2.32 in (58.9 mm)	3/16 in (4.7 mm)	\$51.00	\$40.00
2g	12762	3/32 in (2.4 mm)	1 7/32 in (31.0 mm)	3/16 in (4.7 mm)	\$47.00	\$40.00
1g	12766	1/16 in (1.6 mm)	1 21/32 in (42.1 mm)	3/16 in (4.7 mm)	\$47.00	\$40.00

Hook Weights Avoirdupois Class 6						Optional
50 lb	12894	5 31/32 in (151.6 mm)	9 1/4 in (235.0 mm)	1/4 in (6.4 mm)	\$805.00	\$80.00
25 lb	96408	4 19/32 in (116.7 mm)	5 3/4 in (146.1 mm)	1/4 in (6.4 mm)	\$730.00	\$80.00
20 lb	12895	4 in (101.6 mm)	9 3/16 in (233.3 mm)	1/4 in (6.4 mm)	\$525.00	\$80.00
10 lb	12896	3 1/2 in (89.9 mm)	6 1/4 in (158.8 mm)	1/4 in (6.4 mm)	\$263.00	\$80.00
5 lb	12897	2 5/8 in (66.6 mm)	6 1/2 in (165.1 mm)	1/4 in (6.4 mm)	\$180.00	\$80.00
3 lb	96409	2 1/4 in (57.2 mm)	4 1/32 in (102.4 mm)	1/4 in (6.4 mm)	\$170.00	\$80.00
2 lb	12898	2 in (50.8 mm)	5 in (127.0 mm)	1/4 in (6.4 mm)	\$105.00	\$65.00
1 lb	12899	1 5/8 in (41.3 mm)	4 1/2 in (114.3 mm)	5/32 in (4.0 mm)	\$79.00	\$65.00
0.2 lb	96410	1 in (25.4 mm)	2 5/16 in (58.7 mm)	3/32 in (2.4 mm)	\$68.00	\$40.00
0.1 lb	96411	3/4 in (19.1 mm)	2 5/32 in (54.8 mm)	3/32 in (2.4 mm)	\$68.00	\$40.00
8 oz	12900	1 1/4 in (31.8 mm)	4 in (101.6 mm)	5/32 in (4.0 mm)	\$68.00	\$40.00
4 oz	12901	1 in (25.4 mm)	2 1/4 in (57.2 mm)	3/32 in (2.4 mm)	\$68.00	\$40.00
2 oz	12902	13/16 in (20.6 mm)	2 1/4 in (57.2 mm)	3/32 in (2.4 mm)	\$68.00	\$40.00
1 oz	12903	5/8 in (15.9 mm)	2 1/4 in (57.2 mm)	3/32 in (2.4 mm)	\$68.00	\$40.00
1/2 oz	12904	17/32 in (13.5 mm)	2 29/32 in (73.8 mm)	3/32 in (2.4 mm)	\$63.00	\$40.00

Hook (Only) Weight						
1/4 oz	12905	5/32 in (4.0 mm)	1 13/16 in (46.0 mm)	3/16 in (4.7 mm)	\$47.00	\$40.00
1/8 oz	12906	1/8 in (3.2 mm)	1 1/8 in (28.6 mm)	3/16 in (4.7 mm)	\$47.00	\$40.00
1/16 oz	12907	3/32 in (2.4 mm)	1 1/4 in (31.8 mm)	3/16 in (4.7 mm)	\$47.00	\$40.00
1/32 oz	12908	1/16 in (1.6 mm)	1 13/32 in (35.7 mm)	3/16 in (4.7 mm)	\$47.00	\$40.00

Additional Accessories		
Part #	Description	Price
36092	Statement of Accuracy	\$45.00
25836	Serial number	\$16.00



Hook (only) Weight (5 g - 1 g) and (1/4-1/32 oz)



Hook Weight

# Avoidupois and Metric Individual Hangers and Slotted Weights

Class 7 Stainless Steel Weight Hanger						Optional
Weight	Part #	Diameter	Length	Total Cap	Price	Accredited Certificate
5 lb	12846	4 in (101.6 mm)	37 1/4 in	500 lb	\$273.00	\$80.00
3 kg	156937	4 in (101.6 mm)	38 3/16 in	250 kg	\$283.00	\$75.00

Avoidupois Slotted Class 5						Optional
Weight	Part #	Diameter	Height	Slot Width	Price	Accredited Certificate
10 lb	12589	4 in (101.6 mm)	3 1/8 in (79.4 mm)	1/2 in (12.7 mm)	\$510.00	\$80.00
5 lb	12586	4 in (101.6 mm)	1 9/16 in (39.7 mm)	1/2 in (12.7 mm)	\$320.00	\$80.00
2 lb	12577	3 in (76.2 mm)	1 9/64 in (29.0 mm)	1/2 in (12.7 mm)	\$200.00	\$65.00
1 lb	12574	3 in (76.2 mm)	19/32 in (15.1 mm)	1/2 in (12.7 mm)	\$170.00	\$65.00
8 oz	12583	2 in (50.8 mm)	45/64 in (17.9 mm)	1/2 in (12.7 mm)	\$150.00	\$40.00
4 oz	12580	1 1/2 in (38.1 mm)	11/16 in (17.5 mm)	1/2 in (12.7 mm)	\$115.00	\$40.00

Metric Slotted Class 5						Optional
Weight	Part #	Diameter	Height	Slot Width	Price	Accredited Certificate
5 kg	156931	4 in (101.6 mm)	3 1/8 in (79.4 mm)	1/2 in (12.7 mm)	\$510.00	\$75.00
2 kg	156932	4 in (101.6 mm)	1 9/16 in (39.7 mm)	1/2 in (12.7 mm)	\$355.00	\$75.00
1 kg	156933	3 in (76.2 mm)	1.27 in (32.3 mm)	1/2 in (12.7 mm)	\$206.00	\$55.00
500 g	156934	3 in (76.2 mm)	0.836 in (21.2 mm)	1/2 in (12.7 mm)	\$185.00	\$55.00
200 g	156935	1.5 in (38.1 mm)	0.801 in (20.4 mm)	1/2 in (12.7 mm)	\$155.00	\$55.00
100 g	156936	1.5 in (38.1 mm)	0.601 in (15.3 mm)	1/2 in (12.7 mm)	\$100.00	\$40.00

Additional Accessories		
Part #	Description	Price
36092	Statement of Accuracy	\$45.00
25836	Serial number	\$16.00



Slotted

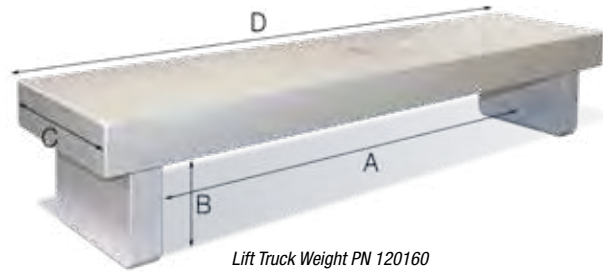
# Clean Room Weight Cart and Lift Truck Weights

Clean Room Weight Cart - Meets ASTM Class 6 Tolerance				Optional
Weight	Part #	Dimensions	Price	Traceable Certificate
50 kg	178045	16 x 16 in	\$4,775.00	\$235.00
100 kg	180033	16 x 16 in	\$5,375.00	\$235.00
200 kg	180624	16 x 16 in	\$6,675.00	\$235.00
250 kg	180625	18 x 18 in	\$8,475.00	\$235.00
500 kg	180034	18 x 18 in	\$15,095.00	\$235.00

Lift Truck - Meets Class 6 Tolerance						
Part #	Description	Dimensions				Price
		A	B	C	D	
120160	1,000 lb	38.25	6.0	22.5	46.25	\$2,260.00
120162	2,000 lb	34.25	6.0	22.5	46.25	\$6,725.00



Clean Room, Weigh Cart  
(Calibration Optional)



Lift Truck Weight PN 120160