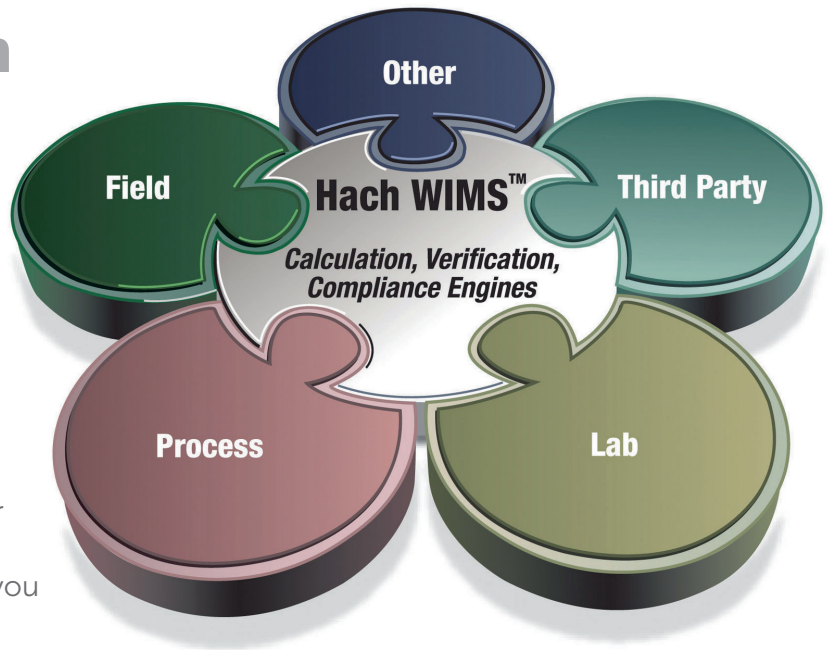


Water Information Management Solution (WIMS™)

Part of Claros™, the Water Intelligence System from Hach

Water Information Management Solution (WIMS) from Hach®, brings data from across your drinking water and wastewater systems to a central, secure location for a complete picture of your system, helping you confidently make informed decisions.



Easily Monitor and Manage Operations

- Enter data once into the system to increase data accuracy.
- Increase efficiencies by automatically collecting your SCADA, LIMS and other data and storing it in a central, secure database.
- Access your data instantly, locally or over the web, to make more informed decisions.
- Quickly troubleshoot system upsets, compliance issues and other problems with a large set of tools.
- Set up personalized dashboards to monitor key data and gain quick access to reports and graphs.
- The software flags problems so you know exactly where they occurred.
- Powerful audit trails allow you to trust your data.

Improve Operations to Save Time, Money and Energy

- Easily identify cost reduction opportunities by comparing data from throughout your operation.
- Quickly compare data in unique ways to get new perspectives of your operation.
- Configure graphs for trend analysis, correlations and control charting.
- Historical records are safely stored and always available.

Efficient Reporting and Visualization

- Produce your electronic and paper regulatory reports, including: NetDMR, SWTR, DBR, NPDES, DMR, eDMR, MOR, SDWA, CCR, etc.
- Receive automatically scheduled reports on-screen, printed or delivered via email.
- Easily generate accurate business reports and graphs with a few keystrokes.
- Over 100 built-in industry-specific formulas allow you to quickly and accurately perform complex calculation and easily handle data qualifiers.

Sandy Beach Water Treatment Facility Operations Form
Friday, December 18, 2009

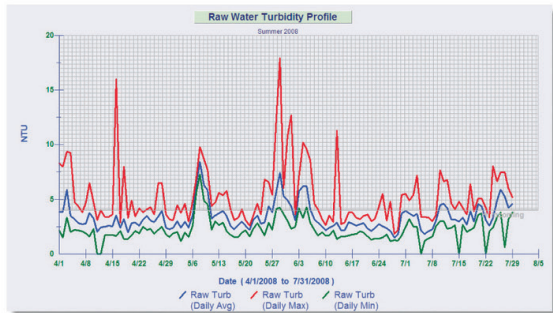
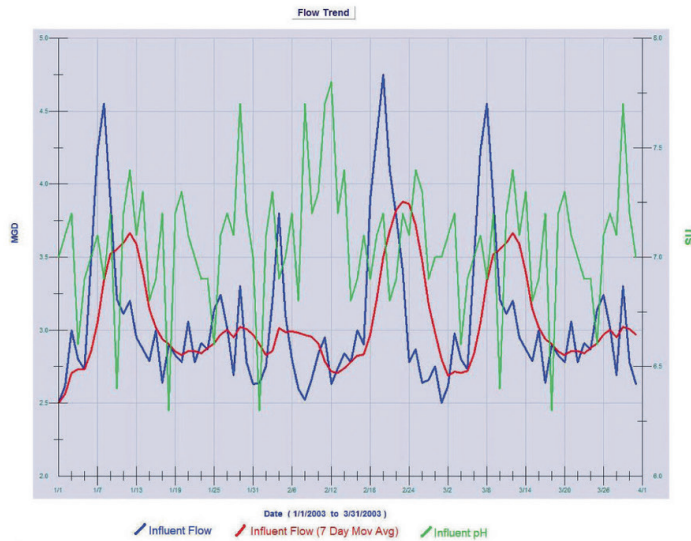
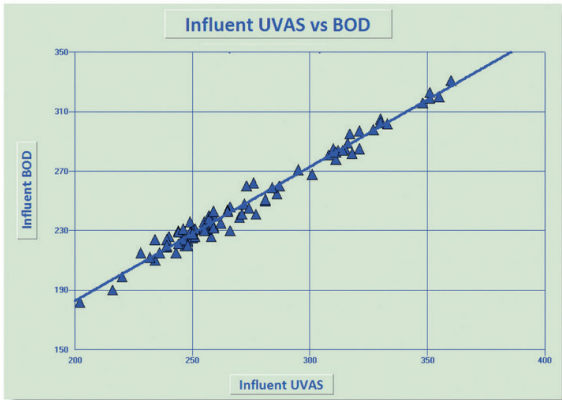
Start Clearwell 20:50	OPERATORS: Mid Shift Lowry - Ohman	Stop Clearwell 23:40
OPERATORS: Day Shift Yonkoske - Lampert	OPERATORS: Swing Shift Yonkoske - Ohman	

TURBIDITY	PH		FL2		CL2		ALUM		APLA		HARDNESS		COLOR		TEMP °C		FLOW		BWP
	Raw	Sett	Raw	Conc	Raw	Fin	Raw	Fin	Raw	Fin	Raw	Fin	Raw	Fin	Raw	Fin	Raw	Fin	
2400	2.5	2.3	0.046	0.050	7.95	7.70	1.10	1.000	0.092					1.0	0.00	11.4	10.50	24.0	
0100									0.000									24.0	
0200	2.4	2.3	0.046	0.040	7.94	7.69	1.22	0.990	0.000									24.0	
0300									0.000									24.0	
0400	2.8	2.3	0.046	0.060	7.95	7.67	1.21	1.000	0.000									24.0	
0500									0.000									24.0	
0600	2.7	2.3	0.046	0.060	7.94	7.67	1.23	1.010	0.000									24.0	
0700									0.000									24.0	
0800	2.6	2.5	0.046	7.900	7.65	7.67	1.24	1.010	0.000	161	64	145	82	0.0	0.00	11.3	10.70	24.0	
0900																			
1000	2.6	2.1	0.0																

TSS Benchsheet (Custom Data Entry Form)

TSS Benchsheet		
Inf TSS	PE TSS	ET TSS
Lab Cal Sample ID		
Sample & Tare	<input type="text"/> g	<input type="text"/> g
Tare	<input type="text"/> g	<input type="text"/> g
Solids	<input type="text"/> g	<input type="text"/> g
Sample Volume	<input type="text"/> ml	<input type="text"/> ml
Suspended Solids	209 mg/L	71 mg/L
		55 mg/L

Data can be entered manually with user-defined data input forms or captured automatically.



Readily analyze trends, correlations, probabilities and create control charts.

Additional WIMS Options

WIMS Lab Cal Module

Lab Cal is a water laboratory data management system, specifically designed for drinking water and wastewater providing easy-to-use sample scheduling and tracking tools for effective lab data management. The visual environment takes the complexity out of managing your scheduled samples. Time-saving features, familiar formats, simple workflows, and pricing that is far less than traditional LIMS systems make LAB Cal a very robust and cost-effective solution.

SCADA, commercial Labs and LIMS Interfaces

Interfaces are available for all water and wastewater industry standard SCADA, commercial lab EDIs and LIMS systems. Interfaces transfer data seamlessly and automatically to WIMS.

Mobile Solutions

Collect and automatically sync data on any mobile device (iOS and Android smartphones and tablets).

Services

Professional services available including installation assistance, set up, configuration, and other specific customer requests to ensure project success.

Training

Hach training can be provided at the customer site, or over the web. Training sessions are tailored to specific customer requirements.

Hach World Headquarters: Loveland, Colorado USA

United States: 800-227-4224 tel 970-669-2932 fax orders@hach.com

Outside United States: 970-669-3050 tel 970-461-3939 fax int@hach.com

hach.com/claros/data-management-overview

Printed in U.S.A.

©Hach Company, 2020. All rights reserved.

In the interest of improving and updating its equipment, Hach Company reserves the right to alter specifications to equipment at any time.



Be Right™