

# Complete Water Analysis Solutions for the **Pulp & Paper Industry**

- ✓ **Ensure Product Quality**
- ✓ **Protect Equipment**
- ✓ **Save Time and Costs**



**Be Right™**

# The Water Analysis Experts for the Pulp & Paper Industry

With more than 85 years as the leading expert in water quality analysis, Hach® provides the knowledgeable and responsive support team you trust to address your unique needs for continuous control over the water and steam applications throughout your entire process.

Whatever your water analysis challenge, Hach has the most complete solution—including a broad offering of easy-to-maintain on-line instrumentation, accurate laboratory equipment, comprehensive test kits, and high-quality prepared reagents, measuring the broadest range of test parameters in the industry.

From process monitoring and laboratory verification to extensive training and comprehensive support, Hach is your trusted partner, assuring maximum uptime through preventative protection and superior service.

**Influent water treatment**

**Paper production processes**

**Product/fiber loss monitoring**

**Boiler feed water**

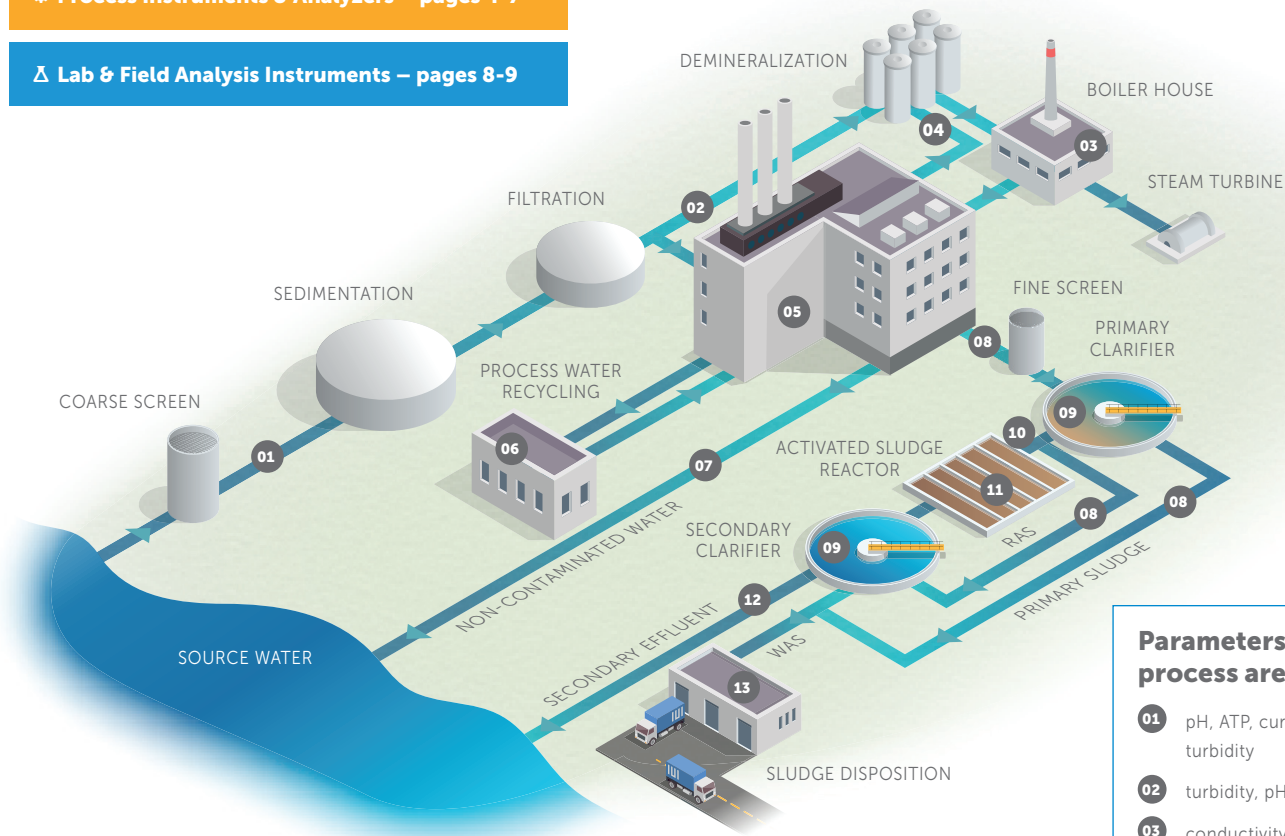
**Wastewater**



# Hach Solutions by Parameter

⚙️ **Process Instruments & Analyzers – pages 4-7**

🔬 **Lab & Field Analysis Instruments – pages 8-9**



| Parameters by process area |  |
|----------------------------|--|
| 01                         | pH, ATP, current streaming, turbidity  |
| 02                         | turbidity, pH, Cl2   |
| 03                         | conductivity, sodium, silica, DO, phosphate, hydrazine   |
| 04                         | conductivity, silica   |
| 05                         | pH, solids, ATP  |
| 06                         | pH, solids, RTC-DAF  |
| 07                         | oil in water, conductivity   |
| 08                         | solids   |
| 09                         | sludge level   |
| 10                         | UV254, TN, TOC, TP, solids, COD, BOD   |
| 11                         | DO, solids, ORP, ATP   |
| 12                         | phosphate, ammonia, nitrate, nitrite, total inorganic nitrogen, solids, pH, RTC-DOS, TN, TOC, TP, COD, BOD |
| 13                         | solids, pH, RTC-SD   |

## Water Supply Conditioning

- ⚙️ Δ ATP
- Δ Color
- ⚙️ Δ Chlorine, free and total
- ⚙️ Δ Chlorine Dioxide
- ⚙️ Δ Conductivity / Total Dissolved Solids (TDS)
- ⚙️ Δ Dissolved Oxygen
- ⚙️ Δ Hardness / Alkalinity
- ⚙️ Δ Iron
- ⚙️ Δ Manganese
- ⚙️ Δ pH
- ⚙️ Δ Silica
- ⚙️ Streaming Current
- ⚙️ Total Nitrogen (TN)
- ⚙️ Δ Total Organic Carbon (TOC)
- ⚙️ Total Phosphorus (TP)
- ⚙️ Δ Turbidity and Suspended Solids (TSS)

## Steam & Power

- ⚙️ Δ Conductivity
- ⚙️ Δ Dissolved Oxygen
- ⚙️ Δ Hydrazine / Oxygen Scavenger

- ⚙️ Δ Laser Turbidity / Iron Transport
- ⚙️ Δ pH
- ⚙️ Δ Phosphate
- ⚙️ Δ Silica
- ⚙️ Sodium
- ⚙️ Total Nitrogen (TN)
- ⚙️ Δ Total Organic Carbon (TOC)
- ⚙️ Total Phosphorus (TP)

## Paper Machine Wet End Operations Monitoring

- Δ ATP
- ⚙️ Δ Chlorine, free and total
- ⚙️ Δ Conductivity / Total Dissolved Solids (TDS)
- ⚙️ Δ Dissolved Oxygen
- ⚙️ Δ Hardness
- ⚙️ Δ ORP
- ⚙️ Δ Laser Turbidity / Iron Transport
- ⚙️ Δ pH
- ⚙️ Sulfate
- ⚙️ Total Nitrogen (TN)
- ⚙️ Δ Total Organic Carbon (TOC)
- ⚙️ Total Phosphorus (TP)

- ⚙️ Δ Turbidity and Suspended Solids (TSS)
- ## Wastewater Treatment

- ⚙️ Δ Absorbance UV
- ⚙️ Δ Ammonia
- ⚙️ Δ ATP
- ⚙️ Δ Biochemical Oxygen Demand (BOD)
- ⚙️ Δ Conductivity / Total Dissolved Solids (TDS)
- ⚙️ Δ Dissolved Oxygen
- ⚙️ Flow
- ⚙️ Δ Nitrate
- ⚙️ Δ Nitrite
- ⚙️ Δ Oil in Water
- ⚙️ Δ ORP
- ⚙️ Δ pH
- ⚙️ Δ Phosphate
- ⚙️ Sludge Level
- ⚙️ Total Nitrogen (TN)
- ⚙️ Δ Total Organic Carbon (TOC)
- ⚙️ Total Phosphorus (TP)
- ⚙️ Δ Turbidity and Suspended Solids (TSS)

## Process Instruments & Analyzers

### Ammonia

#### Amtax sc Ammonium Analyzer

Install directly on the tank edge for fast reaction times in the closed loop control.

- High-precision, gas-sensitive electrode
- Selective GSE instrumentation
- Automatic cleaning, calibration, self-diagnosis
- Optional weatherproof housing for outdoor setup or transparent door for use indoors



### Free/Total Chlorine

#### CL10sc Amperometric Chlorine Analyzer

Continuous readings of disinfection processes equipped with Cal-Watch self-diagnostics to alert users when the process has changed or the instrument needs service.

- 0-20 ppm
- Warning of pH and chlorine calibration deviation
- Non-contacting flow sensor
- Reagentless method



#### CL17 Free/Total Chlorine Analyzer

Dependable, colorimetric DPD free and total chlorine analysis.

- Chlorine analysis independent of pH, temperature, and sample flow
- 0.035 to 5 mg/L free or residual chlorine range
- Unattended operation up to 30 days
- Colorimetric DPD chemistry—fast, reliable, economical



**EPA  
COMPLIANT**

## Conductivity

#### AF7000 Streaming Current Monitor

Durable source water monitoring thanks to an industrial sized motor and stainless steel castings.

- Automatic flush feature
- Easy routine maintenance
- Sub-1 second response time to source water changes
- Auto-zeros in less than 5 seconds



#### 9525sc Degassed Cation Conductivity System

Simple to integrate. Simple to operate.

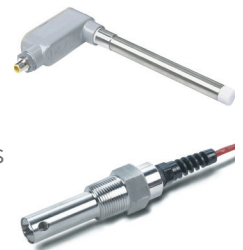
- Measures specific conductivity (SC), cation conductivity (CC), and degassed cation conductivity (DCC)
- The 9523 sc cation conductivity analyzer can be combined with the degassed conductivity system in a single panel or separate panels
- Works with SC200 platform



#### 3400 Digital Contacting Conductivity Sensors

Enhanced performance sensors for demanding applications including ultra-pure water, clean-in-place (CIP), and boiler/condensate monitoring.

- Each sensor is tested to determine its unique, absolute four-digit cell constant
- Built-in Pt 1000 RTD temperature element for fast response to temperature changes with  $\pm 0.1^\circ\text{C}$  accuracy
- Measure from theoretically pure water ( $0.057 \mu\text{S}/\text{cm}$  or  $18.2 \text{ M}\Omega$ ) up to  $200,000 \mu\text{S}/\text{cm}$
- Multiple sensor inputs including conductivity, resistivity, TDS, salinity or one of six calculated measurements



### 3700sc Digital Inductive (Electrodeless) On-Line Sensors

No direct contact between the measuring element and the sample.

- Ideal for demineralizer regeneration
- 200 to 2,000,000  $\mu\text{S}/\text{cm}$  range
- Rugged, non-fouling design
- Sensor works with a Hach SC200 or SC1000 Digital Controller



### Nitrate

#### Nitratax sc Nitrate Sensors

Digital optical probes for high precision.

- UV measurement
- Low-maintenance, reagent-free, self-cleaning
- Compatible with all SC controllers

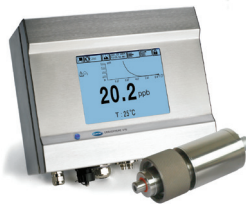


### Dissolved Oxygen

#### Orbisphere® K1100 Optical Dissolved Oxygen Sensor

The first maintenance-free optical oxygen sensor for steam generation

- Only 1 calibration per year
- No membranes = 2 minutes of annual maintenance
- Compatible with Orbisphere 28mm flow chamber for a low cost retrofit



#### LDO sc Luminescent Dissolved Oxygen Sensors

- No calibration for the entire 2-year life of the sensor cap
- No membranes to replace or electrolyte solution to replenish
- Diagnostic alert indicators for routine cleaning cycles
- Start measuring right out of the box with 3D calibration



### Oxygen Scavengers

#### 9586sc Oxygen Scavenger Analyzer

Save time on design. Accelerate your installation. Reduce training complexity. Simplify maintenance and operation.

- 0 to 500 ppb hydrazine programmable range
- 0 to 100 ppb carbohydrazide programmable range



### pH / ORP

#### pHD™ Digital Differential On-Line pH/ORP Sensors

For moderate- or high-conductive applications ( $>10 \mu\text{S}/\text{cm}$ ) such as monitoring cooling water blowdown, drum boiler water, or raw water treatment.



- Field-proven differential electrode measurement technique offers better accuracy
- Replaceable salt-bridge/protector simplifies maintenance and extends sensor life
- Sensor works with a Hach SC200 or SC1000 Digital Controller

#### 8362 High Purity Water System

Simple to integrate. Simple to operate.

- Works with SC200 platform
- -1500 to +1500 mV ORP range
- 0 to 4 bar (58 psi) pressure range



## Phosphate / Silica

### Series 5500sc Phosphate or Silica Analyzer

Lower Maintenance. Less Downtime.

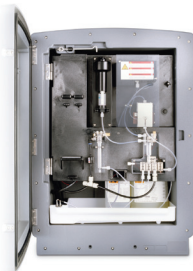
- Only two liters of reagent are required for the analyzer to perform unattended for up to 90 days
- The industry's only pressurized reagent delivery system eliminates the frequent maintenance associated with pumps
- Predictive diagnostic tools, including Hach's proprietary Prognosys technology, warning LEDs, and high-visibility notification screens let you avoid unplanned downtime
- Grab-Sample-In and Grab-Sample-Out features allow quick analysis of a grab sample poured into the analyzer, and facilitate taking a sample out of the analyzer to verify in a lab test



### Phosphax sc Phosphate Analyzer

Ideal for precise orthophosphate measurements directly at the tank.

- Detection limits as low as 0.05 mg/L
- Response time of less than 5 minutes
- Minimum reagent consumption



## Sodium

### NA5600sc Analyzer

Protect the metallurgy in your system and monitor for leaks at sub ppb. Our newest analyzer has a smaller footprint and uses the same interface as the 5500 sc.

- Automatic calibration
- Automatic electrode reactivation
- Optimum response time in a variety of power applications
- Reagent replenishment only every 90 days



## Total Organic Carbon

### BioTector® B7000i TOC Analyzer

- Configurations available for TOC, TOC/TN, TOC/TN/TP
- Patented Two-Stage Advanced Oxidation Technology
- Unique self-cleaning oxidation technology allows the analyzer to handle difficult samples and reduce scheduled maintenance



### FP360sc Oil-in-Water Sensor

- Continuous online monitoring solution
- Low maintenance
- Easy-to-clean sensor



### UVAS plus sc Sensor

Reagent-free determination of organic load via the spectral absorption coefficients (SAC)

- Low-maintenance, self-cleaning
- Compatible with all SC controllers



## Turbidity & Suspended Solids

### Solitax® sc Sensors

- Accurate, color-independent measurements
- Self-cleaning device prevents erroneous values
- Easy one-point calibration
- Sensors work with a Hach SC200 or SC1000 Digital Controller



### TSS sc Turbidity and Suspended Solids Sensor

- Can measure both online suspended solids and turbidity
- Withstands operating temperatures of 90° C and pressures up to 10 bar
- Sensor works with a Hach SC200 and SC1000 Digital Controller



### Sonatax sc Sensor

Digital ultrasonic probe to measure sludge level.

- Automatically adjusts sensitivity to match varying solids concentrations and sludge profiles in the tank.
- Reflected signals are removed by the software
- Factory calibration
- Various mounting devices available



### TU5300sc™ or TU5400sc™ Online Laser Turbidimeters

- Groundbreaking 360° x 90° Detection™ Technology
- Matching lab and online results
- Everything about turbidity—faster



### Surface Scatter® 7 sc High Range Turbidimeter (SS7)

Minimizes sensitivity loss and makes sample cell cleaning and replacement unnecessary in high turbidity conditions

- The original non-contact turbidimeter
- Measurement range of 0 to 9999 NTU
- Corrosion-resistant construction
- High-temperature model (up to 70°C) available



## Lab & Field Analysis Instruments

### Photometric & Colorimetric

#### DR3900 Spectrophotometer

- Easy step-by-step testing procedure
- Elimination of false readings
- Accurate results every time



#### DR6000 Spectrophotometer

- Accessories for high volume and high accuracy testing needs
- Guided procedures and elimination of false readings
- Automatically avoids errors
- Measures on the UV/VIS spectrum



#### DR900 Colorimeter

- Fastest and simplest water testing for the most demanding field environments
- Field ready in every way possible
- Intuitive user interface
- Simple data communication



#### SL1000 Portable Parallel Analyzer® (PPA)

The same chloramination tests can now be performed 75% faster, with less than half the manual steps.

- Up to six parameters (up to 4 chem keys and 2 probes) tested in parallel
- Uses self-contained Chemkey reagents instead of powder pillows or glass vials
- Tests include: monochloramine, extended range chlorine (up to 10 mg/L), combined free and total ammonia, free and total chlorine, nitrite, copper, orthophosphate, hardness (normal and high range), peracetic acid, alkalinity, dissolved iron. Probe-based tests include: pH, conductivity, ORP, dissolved oxygen, nitrate, fluoride; temperature included with each probe.



### TNTplus® Bar-Coded Chemistries

- Instrument automatically detects and runs the correct method
- Easy, accurate recognition, color-coded parameters and ranges
- 10 measurements in one rotation, eliminating outliers; optically superior glassware
- For use with Hach spectrophotometers



Barcode reading, vial spinning, and outlier rejection features not available on DR1900.

### Electrochemical

#### HQD® Meters and Intellical™ Probes

Use a single handheld HQD meter and interchangeable Intellical probes for quick, simple, and reliable measurements.

- Designed for your water applications, the Hach HQD smart probes automatically recognize the testing parameter, calibration history, and method settings to minimize errors and set-up time
- Hach gives measurement flexibility and ease of operation with its HQD portable and benchtop meter and full suite of interchangeable Intellical laboratory and field probes for testing Conductivity, DO, ORP, pH, Ammonia, and many more





## Microorganisms

### LuminUltra® Photonmaster Luminometer with PBM

Rugged, low-cost, portable luminometer that uses 2nd generation ATP test kits

- Accurate results within minutes
- Simple, straightforward method to minimize error and produce actionable results
- Considerable cost-per-test savings over competing devices
- Compatible with PBM for data transfer to mobile devices using the LuminUltra Cloud™ mobile app for real-time analysis



## Sampling

### AS950 Peristaltic Samplers

- Lightweight design, low power requirements
- Equipped with standard memory and USB connectivity allowing all data to be logged and transferred via USB drive
- Large, full color display allows intuitive programming to make these critical, remote sampling applications virtually error-free



## Titration

### Titralab® AT1000 Series

- One-touch automatic analyzers
- Pre-set methods that can quickly deliver accurate and reliable results straight from the box



## Turbidity & Suspended Solids

### TU5200 Benchtop Laser Turbidimeter

- Groundbreaking 360° x 90° Detection™
- Technology Matching lab and online results
- Everything about turbidity—faster



### TL23 Series Benchtop Turbidimeter

- Designed for the most demanding industrial and wastewater applications
- Feature the trusted technology of Hach's legacy benchtop turbidimeters with improved functionality



### TSS Portable

Broad measuring range for turbidity and suspended solids; ideal for remote monitoring in municipal and industrial wastewater, drinking water and rivers

- Multi-beam alternating light method
- Infrared diode system
- Use to easily monitor processes or calibrate/validate online sensors
- Automatically compensates for air bubbles



# Hach Water Analysis Tools for Pulp & Paper

Hach offers reagents, and portable, laboratory, and process instruments for more than 100 parameters: the broadest range for industry water analysis.

| Parameter                                   | ⚙️ Process Solutions   | 🔬 Lab & Field Solutions  | Water Supply Conditioning | Steam & Power | Paper Machine Wet End | Wastewater Treatment |
|---|--|--|---------------------------|---------------|-----------------------|----------------------|
| Absorbance UV                               | <a href="#">UVAS plus sc Sensor</a> ; <a href="#">NX7500 UV Sensor</a>   | <a href="#">DR1900, 3900, 6000 Spectrophotometers</a>  | ✓                         |               |                       | ✓                    |
| Ammonia                                     | <a href="#">Amtax sc Analyzer</a> ; <a href="#">A-ISE sc Sensors</a>   | <a href="#">All DR Series Instruments</a> ; <a href="#">SL1000 PPA</a>   |                           |               |                       | ✓                    |
| ATP   | <a href="#">EZ7300 Microbial Load ATP Analyzer</a>   | <a href="#">LuminUltra® Luminometers</a>   | ✓                         |               | ✓                     | ✓                    |
| Biochemical Oxygen Demand (BOD)             | <a href="#">BioTector B7000i</a>   | <a href="#">HQD® Meters</a> ; <a href="#">BODTrak II BOD Manager™ Software</a>   |                           |               |                       | ✓                    |
| Color                                       | <a href="#">NV3300 Color Probes</a>  | <a href="#">DR3900 and DR6000 Spectrophotometers</a><br><a href="#">DR900 Colorimeter</a> ; <a href="#">SL1000 PPA</a> ; <a href="#">Lico</a> ; <a href="#">TNTplus®</a> | ✓                         |               |                       | ✓                    |
| Chlorine, free and total                    | <a href="#">CL10sc Analyzer</a> ; <a href="#">CL17 Analyzer</a>  | <a href="#">All DR Series Instruments</a> ; <a href="#">AT1000 Titrators</a>   | ✓                         |               | ✓                     | ✓                    |
| Chlorine Dioxide                            | <a href="#">9187sc Chlorine Dioxide Analyzer</a>   | <a href="#">All DR Series Instruments</a>  | ✓                         |               | ✓                     | ✓                    |
| Conductivity / Total Dissolved Solids (TDS) | <a href="#">9525sc System</a> ; <a href="#">3400 Contacting or 3700 sc Inductive Conductivity Sensors</a>  | <a href="#">Sension+ Portable Meters</a> ; <a href="#">HQD® Meters</a> ; <a href="#">HQD®-Intellical Probes</a>  | ✓                         | ✓             | ✓                     | ✓                    |
| Dissolved Oxygen                            | <a href="#">LDO sc Sensors</a> ; <a href="#">Orbisphere® K1100 Sensors</a>   | <a href="#">HQD® Meters</a> ; <a href="#">Orbisphere® 3100 Analyzer</a> ; <a href="#">HQD®-Intellical Probes</a>   | ✓                         | ✓             | ✓                     | ✓                    |
| Flow  | <a href="#">FL1500 Flow Logger</a> ; <a href="#">FH950 Handheld Flow Meter</a> ; <a href="#">Impeller Flow Sensors</a>   |  | ✓                         | ✓             | ✓                     |                      |
| Hardness / Alkalinity                       | <a href="#">EZ5000 Series Hardness Analyzer</a><br><a href="#">EZ5000 Series Alkalinity Analyzer</a><br><a href="#">APA6000 Analyzers</a> ; <a href="#">Orbisphere 410/510 Controllers</a> | <a href="#">Digital Titrators</a> ; <a href="#">SL1000 PPA</a> ;<br><a href="#">All DR Series Instruments</a>  | ✓                         | ✓             | ✓                     |                      |
| Hydrazine / Oxygen Scavenger                | <a href="#">9586sc Analyzer</a>  |  |                           | ✓             |                       |                      |
| Iron  | <a href="#">EZ1000 and EZ2000 Series Iron Analyzers</a>  | <a href="#">All DR Series Instruments</a>  | ✓                         |               |                       |                      |
| Laser Turbidity / Iron Transport            | <a href="#">TU5400 Laser Turbidimeter</a>  | <a href="#">All DR Series Instruments</a>  |                           | ✓             | ✓                     |                      |
| Manganese                                   | <a href="#">EZ1000 and EZ2000 Series Manganese Analyzers</a>   | <a href="#">All DR Series Instruments</a>  | ✓                         |               |                       |                      |
| Microorganisms                              | <a href="#">EZ7300 Series Analyzers</a>  | <a href="#">LuminUltra® Luminometers</a> ; <a href="#">Microtest Peel Plate® Heterotrophic Plate Count Media</a>   | ✓                         | ✓             | ✓                     | ✓                    |
| Nitrate                                     | <a href="#">Nitratax sc Sensors</a> ; <a href="#">NX7500 UV Sensor</a> ; <a href="#">AN-ISE sc</a>   | <a href="#">All DR Series Instruments</a> ; <a href="#">ISE</a>  |                           |               |                       | ✓                    |
| Nitrite                                     | <a href="#">NX7500 Multi-parameter UV Sensor</a>   | <a href="#">All DR Series Instruments</a>  |                           |               |                       | ✓                    |
| Oil in Water                                | <a href="#">FP360sc Sensor</a>   | <a href="#">DR300 Pocket Colorimeter</a> ; <a href="#">DR900 Colorimeter</a> ;<br><a href="#">DR3900 and DR6000 Spectrophotometers</a>                                   |                           |               |                       | ✓                    |
| pH / ORP                                    | <a href="#">pHD™ Differential Sensors</a> ; <a href="#">8362 High Purity System</a>  | <a href="#">Sension+ Portable Meters</a> ; <a href="#">HQD® Meters</a>   | ✓                         | ✓             | ✓                     | ✓                    |
| Phosphate                                   | <a href="#">5500sc Phosphate Analyzer</a> ; <a href="#">Phosphax sc Analyzers</a><br><a href="#">EZ Series Phosphate Analyzer</a><br><a href="#">EZ Series Total Phosphorus Analyzer</a>   | <a href="#">All DR Series Instruments</a>  | ✓                         | ✓             |                       | ✓                    |
| Silica                                      | <a href="#">5500sc Silica Analyzer</a>   | <a href="#">All DR Series Instruments</a>  | ✓                         | ✓             |                       |                      |
| Sludge Level                                | <a href="#">Sonatax sc Sensors</a>   | <a href="#">TSS Portable</a> ; <a href="#">“Sludge Judge” Water Core Sampler</a>   |                           |               |                       | ✓                    |
| Sodium                                      | <a href="#">NA5600sc Sodium Analyzer</a>   | <a href="#">HQD® Meters w/ ISE</a> ; <a href="#">AT1000 Potentiometric Titrator</a>  |                           | ✓             |                       |                      |
| Streaming Current                           | <a href="#">AF7000 Streaming Current Monitors</a>  |  | ✓                         |               |                       |                      |
| Total Nitrogen (TN)                         | <a href="#">BioTector® B7000i Analyzer</a>   |  | ✓                         | ✓             | ✓                     | ✓                    |
| Total Organic Carbon (TOC)                  | <a href="#">BioTector® B7000i Analyzer</a> ; <a href="#">EZ Series Analyzers</a>   | <a href="#">All DR Series Instruments</a> ; <a href="#">TNT plus® Vial Tests</a>   | ✓                         | ✓             | ✓                     | ✓                    |
| Total Phosphorus (TP)                       | <a href="#">BioTector® B7000i Analyzer</a>   |  | ✓                         | ✓             | ✓                     | ✓                    |
| Turbidity and Suspended Solids (TSS)        | <a href="#">Solitax® sc and TSS Sensors</a><br><a href="#">TU5 Series® Laser Turbidimeters</a><br><a href="#">Surface Scatter® 7 sc Turbidimeters</a>                                      | <a href="#">TSS Portable</a> ; <a href="#">2100Q Portable Turbidimeter</a><br><a href="#">TU5200 and TL23 Benchtop Turbidimeters</a>                                     | ✓                         |               | ✓                     | ✓                    |

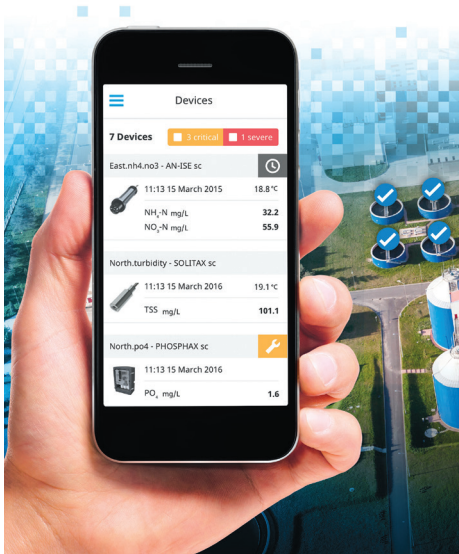


# Claros™

## The Water Intelligence System

Imagine the time savings, cost reductions, and peace of mind that a complete “water intelligence system” could provide—a system that would address uncertainties about efficiency and compliance, changing regulations, unpredictable influent levels, unplanned instrument downtime, and errors in sampling and data logging.

**Claros™, the Water Intelligence System from Hach,** brings together 85 years of instrument expertise and 25 years of software development to address three critical areas: instrument management, data management, and process management, harnessing information to deliver guided insights for optimized plant operations.



**Eliminate uncertainty. Increase confidence.  
See the power of Claros.**

**Learn more at [hach.com/claros](http://hach.com/claros)**



### Process Management

#### Claros RTC (Real Time Control)

Manage your process in real time based on constantly changing process conditions. This complete off-the-shelf system that adjusts treatment processes in real time, keeping your facility compliant while reducing treatment costs.

### Data Management

#### Claros™ Collect

Access data immediately via an intuitive, easy-to-read interface on your desktop, mobile or tablet. Consolidate your data and reduce errors at the source of collection.

#### Claros WIMS™

Combine your water system data sources in a central, secure database, that provides the tools needed for electronic and paper reporting, analysis, and monitoring. When investigating data, the filters, drill-downs and custom forms help operators find insights hidden in raw data.

### Instrument Management

#### Prognosys™

This predictive diagnostic system allows you to be proactive in your maintenance by alerting you to upcoming instrument issues.

#### Mobile Sensor Management

Mobile Sensor Management lets you verify and adjust process instrument measurements using laboratory reference values on your web-enabled devices. Receive status alerts for all connected instruments within a single view so you can see your system's complete performance.

# Hach is your partner for water analysis in the pulp & paper industry.

We invite you to take a look at our comprehensive line of product solutions and services. They're the most accurate, dependable, and cost-effective products you can buy.

Hach offers:

- On-line process, laboratory, and field instrumentation
- Equipment, reagents, and supplies
- More EPA-approved methods than any other company
- Portable test kits and field instruments
- Automatic samplers and flow meters
- Local sales and service teams
- Service partnership programs and customized training

**For more information,**

**visit: [hach.com/industries/pulp-and-paper](http://hach.com/industries/pulp-and-paper) or call toll-free: 800-227-4224**



## Get your problems solved with Hach ServicePlus programs.

Hach Service can help with your maintenance and support challenges whether it is a lack of resources, an instrument that is down, bringing your plant back online, or the need for a predictable budget. We offer a range of service offerings, including the option to extend product warranty for up to 5 years!

**[hach.com/service](http://hach.com/service) | 800-227-4224**

HACH

P.O. Box 389

Loveland, Colorado 80539-0389 U.S.A.

Telephone: 970-669-3050

Fax: 970-669-2932

E-mail: [orders@hach.com](mailto:orders@hach.com)



**Be Right™**