

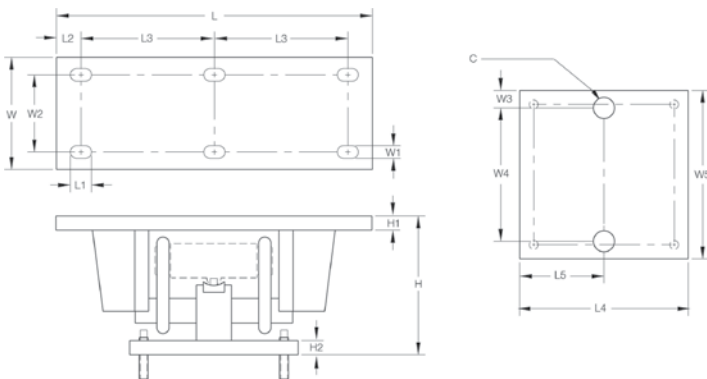
# Translink™ Parallel Link Truck Scale Assembly

Rice Lake Weighing Systems



Mount only; does not include load cell.  
Picture is a representation of actual product.

The Translink parallel link truck scale assembly is designed for use with Rice Lake Weighing Systems' RL75223 and RL75040A, VPG Revere's 5223 or VPG Sensortronics® 65040A load cells. This design allows the scale platform to move freely in all directions on a horizontal plane while causing the platform to self-center because of the pendulous action of the links. The unique parallel link design eliminates the need for costly and troublesome checkrods. Simply install platform bumpers and forget about over-travel. This mount is ideal for heavy-capacity weigh bridges.



## Dimensions

Rated Capacity	C	H	H1	H2	L	L1	L2	L3	L4	L5	W	W1	W2	W3	W4	W5
<b>lb/in</b>																
50,000-100,000 (RL75223, 5223)	1.50	12.93	1.00	1.00	22.50	1.50	1.75	9.50	11.75	5.88	7.75	0.91	5.25	1.25	9.25	11.75
25,000-40,000 (RL75040A, 65040A)	1.50	9.88	1.00	1.00	18.50	1.50	1.75	7.50	11.75	5.88	7.75	0.91	5.25	1.25	9.25	11.75
50,000-75,000 (RL75040A, 65040A)	1.50	12.82	1.00	1.00	22.50	1.50	1.75	9.50	11.75	5.88	7.75	0.91	5.25	1.25	9.25	11.75
<b>kg/mm</b>																
22,679.6-45,359.4	38.1	328.4	25.4	25.4	571.5	37.5	44.5	241.3	298.5	149.4	196.9	23.1	133.4	31.8	235.0	298.4
11,339.8-18,143.7	38.1	251.0	25.4	25.4	469.9	37.5	44.5	190.5	298.5	149.4	196.9	23.1	133.4	31.8	235.0	298.4
22,679.6-34,019.4	38.1	325.6	25.4	25.4	571.5	37.5	44.5	241.3	298.5	149.4	196.9	23.1	133.4	31.8	235.0	298.4

## Order Information

Load Rating (Per Module)	Part#	Price
<b>For Use With RL75223, 5223 Load Cells</b>		
50,000 lb-100,000 lb	22,679.6 kg-45,359.4 kg	<b>17970</b>
<b>For Use With RL75040A, 65040A Load Cells</b>		
25,000 lb-40,000 lb	11,339.8 kg-18,143.7 kg	<b>17971</b>
50,000 lb-75,000 lb	22,679.6 kg-34,019.4 kg	<b>17972</b>

Mount only; does not include load cell

See load cell model RL75223 (RLWS), load cell model RL75040 (RLWS) and model 65040A (VPG Sensortronics) specifications

## Standard Features

- Capacities: 25,000-100,000 lb (11,339.8-45,359.4 kg)
- Center-supported, end-loaded double-ended shear beam design
- Free movement in all directions in the horizontal plane with virtually no friction
- Links provide optimal loading conditions for the cell
- Completely self-centering
- Requires no check rods
- Utilizes cells with 3 mV/V output
- Models available are RL75223 and RL75040, RTI 5223 and Vishay Sensortronics 65040A load cells

## Applications

- Truck scale mount
- Heavy-capacity horizontal tanks

# Motor Truck Scale Electronic Conversion Kit

Rice Lake Weighing Systems



## Complete Kit Includes:

- One JB8SP NEMA Type 4X signal-trim junction box with individual and section trimming capability (six- and eight-mount kits) or one JB4SP NEMA Type 4X signal-trim junction box (four-mount kits)
- One UJB3T6 DC transient protector
- Four, six or eight Translink mounting assemblies with RL75040 or RL75223 load cells
- 100 ft of hostile environment EL147HE SURVIVOR® load cell cable

*Picture is a representation of actual product.*

Full electronic performance can be achieved at a fraction of the cost of a new scale and pit. The Motor Truck Scale (MTS) Electronic conversion kit is designed to transform an existing scale pit and weighbridge into a fully electronic vehicle scale. Designed for quick installation without removing the platform or reconfiguring the pit, the conversion kit can often be installed in a matter of days, minimizing downtime. This ease of installation is important when considering installations where it is not feasible to completely remove the existing scale.

## Standard Features:

- Cost and time efficient installation; no need to remove weighbridge
- Converts existing scale capacities of 40,000-300,000lb (18,143.7-90,718.7kg)
- Four, six or eight-mount kits for two, three or four-section conversions
- Translink™ heavy-capacity mounting assemblies
- Free movement in all directions in the horizontal plane with virtually no friction
- Completely self-centering
- Requires no check rods
- Capacity per mount: 25,000-100,000lb (11,339.8-45,359.4 kg)
- Utilizes cells with 3 mV/V output

## Optional Features

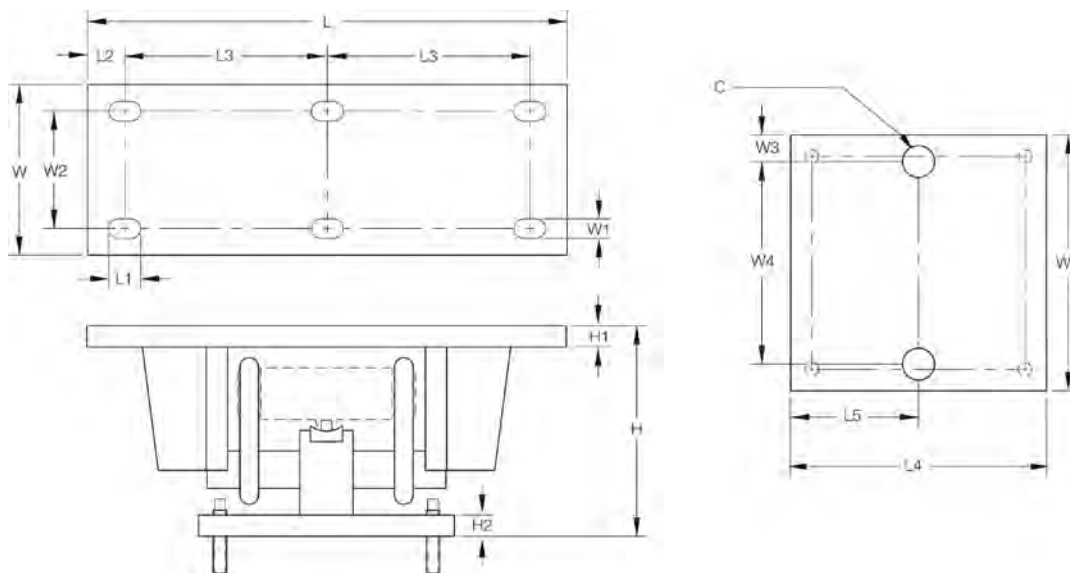
- Custom heights available; consult
- RLWS RL75223 welded-seal, VPG® Sensortronics 65040A or RTI 5223 load cells

## Applications

- Updating existing mechanical motor truck scales
- Replacing unsatisfactory electronic motor truck scales
- Conversion of heavy-capacity scales into fully electronic vehicle scales where the existing scale cannot be removed

# Motor Truck Scale Electronic Conversion Kit

Rice Lake Weighing Systems



## Dimensions

Rated Capacity	C	H*	H1	H2	L	L1	L2	L3	L4	L5	W	W1	W2	W3	W4**	W5
<b>lb/in</b>																
50,000-100,000 (RL75223)	1.50	12.93	1.00	1.00	22.50	1.50	1.75	9.50	11.75	5.88	7.75	0.91	5.25	1.25	9.25	11.75
25,000-40,000 (RL75040A)	1.50	9.88	1.00	1.00	18.50	1.50	1.75	7.50	11.75	5.88	7.75	0.91	5.25	1.25	9.25	11.75
50,000-75,000 (RL75040A)	1.50	12.82	1.00	1.00	22.50	1.50	1.75	9.50	11.75	5.88	7.75	0.91	5.25	1.25	9.25	11.75
<b>kg/mm</b>																
22,679.6-45,400.00 (RL75223)	38.1	328.4	25.4	25.4	571.5	37.5	44.5	241.3	298.5	149.4	196.9	23.1	133.4	31.8	235.0	298.45
11,339.8-18,143.7 (RL75040A)	38.1	251.0	25.4	25.4	469.9	37.5	44.5	190.5	298.5	149.4	196.9	23.1	133.4	31.8	235.0	298.45
22,679.6-34,019.4 (RL75040A)	38.1	325.6	25.4	25.4	571.5	37.5	44.5	241.3	298.5	149.4	196.9	23.1	133.4	31.8	235.0	298.45

\*Custom heights available; consult

\*\*Custom hole spacing for existing bolt patterns is available; consult

## Order Information

Scale Suggested Capacity	Load Cell Capacity (Per Module)		Part #	Price	Load Cell Used In Kit	
<b>4-Module Kit (Includes Weigh Modules Load Cells, Junction Box, and Transient Protection)</b>						
40,000 lb	18,143.7 kg	25,000 lb	11,339.8 kg	30513	\$5,665.00	RL75040A
60,000 lb	27,215.6 kg	40,000 lb	18,143.7 kg	30514	\$6,165.00	RL75040A
<b>6-Module Kit (Includes Weigh Modules Load Cells, Junction Box and Transient Protection)</b>						
100,000 lb	45,359.4 kg	50,000 lb	22,679.6 kg	30515	\$9,705.00	RL75040A
120,000 lb	54,431.2 kg	60,000 lb	27,215.6 kg	30516	\$9,705.00	RL75040A
<b>8-Module Kit (Includes Weigh Modules Load Cells, Junction Box and Transient Protection)</b>						
120,000 lb	54,431.2 kg	60,000 lb	27,215.6 kg	30517	\$12,505.00	RL75040A
200,000 lb	90,718.7 kg	75,000 lb	34,019.4 kg	30518	\$12,505.00	RL75040A
300,000 lb	SD 136,078.1 kg	100,000 lb	45,359.4 kg	30512	\$15,230.00	RL75223

SD refers to super duty, 100,000 lb (45,359.4 kg) capacity welded-seal load cells