

Minebea Intec Combics

Bench and Floor Platform Scales

Specifications

Cable Length:

10 ft/3 m-up to 1,000 lb 30 x 30 in
20 ft/6 m 1,000 lb and above 36 x 36 in

Operating Temperature:

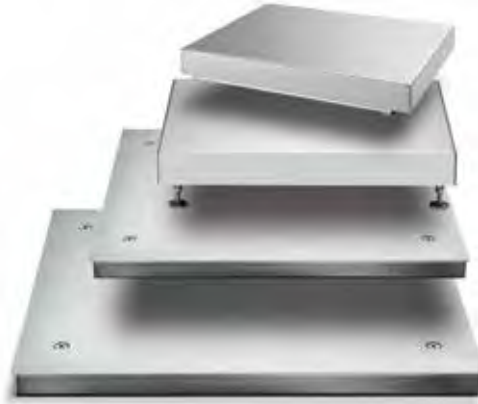
14° F to 104° F (-10° C to 40° C)

Height:

Adjustable feet

Warranty:

Two-year limited warranty
Accessories: One-year limited warranty



Standard Features

- One or four load cells (as noted)
- NTEP Certified (up to 5000e) and high resolution 30,000 d versions available
- Compatible with all Rice Lake and Combics indicators
- 10 or 20 ft platform cable

Optional Configurations

- Complete selection of pit frames for flush mounting available
- R2 - Electropolished 316T, stainless steel
- T1 - Pressure lift system (only available for II platforms and larger)
- Drive-on ramps
- Pit frame
- Mild steel painted or 304 stainless steel
- 304 stainless steel platters

Minebea Intec Combics

Painted/Stainless Steel

Part Number/Price

RLWS PN	Minebea PN	Dimensions	Foot Adjustable Height	# Load Cells	Capacity Readability	Capacity Readability	Capacity Readability	Est. Weight	Price	
Painted Steel										
102285	CAPP1U-10CC-LU	10 x 10in	2.7 in - 3.6in	1	15lb	0.0005	6 kg	0.0002	14 lb	\$747.00
102286	CAPP1U-20CC-LU	10 x 10in	2.7 in - 3.6in	1	30lb	0.001	15 kg	0.0005	14 lb	\$747.00
102287	CAPP1U-50CC-LU	10 x 10in	2.7 in - 3.6in	1	60lb	0.002	30 kg	0.001	14 lb	\$747.00
102288	CAPP1U-50DD-LU	12 x 12in	3.6 in - 4.5 in	1	60lb	0.002	30 kg	0.001	18 lb	\$821.00
102291	CAPP1U-100DD-LU	12 x 12in	3.6 in - 4.5 in	1	150lb	0.005	60 kg	0.002	18 lb	\$821.00
102289	CAPP1U-50EE-LU	18 x 18in	3.5 in - 4.4 in	1	60lb	0.002	30 kg	0.001	64 lb	\$1,098.00
102292	CAPP1U-100EE-LU	18 x 18in	3.5 in - 4.4 in	1	150lb	0.005	60 kg	0.002	64 lb	\$1,098.00
102297	CAPP1U-200EE-LU	18 x 18in	3.5 in - 4.4 in	1	200lb	0.01	100 kg	0.005	64 lb	\$1,098.00
102294	CAPP1U-100GG-LU	24 x 24in	5.7 in - 6.7 in	1	150lb	0.005	60 kg	0.002	121 lb	\$1,948.00
102299	CAPP1U-250GG-LU	24 x 24in	5.9 in - 6.4 in	1	300lb	0.01	150 kg	0.005	121 lb	\$1,948.00
102302	CAPP1U-500GG-LU	24 x 24in	5.7 in - 6.7 in	1	600lb	0.02	300 kg	0.01	121 lb	\$1,922.00
102296	CAPP1U-100HH-LU	30 x 30in	5.71 in - 6.71 in	1	150lb	0.005	60 kg	0.002	187lb	\$2,577.00
102301	CAPP1U-250HH-LU	30 x 30in	5.71 in - 6.71 in	1	300lb	0.01	150 kg	0.005	187 lb	\$2,577.00
102304	CAPP1U-500HH-LU	30 x 30in	5.71 in - 6.71 in	1	600lb	0.02	300 kg	0.01	187 lb	\$2,577.00
102306	CAPP1U-1000HH-LU	30 x 30in	5.71 in - 6.71 in	1	1500 lb	0.05	600 kg	0.02	187 lb	\$2,577.00
Pit Frames										
104313	YEG-HG-PUS	30 x 24in (HG)								\$884.00
104314	YEG-HH-PUS	30 x 30in (HH)								\$880.00
104315	YPF01KKP-MUS	36 x 36in (KK)								\$982.00
Stainless Steel										
102429	CAPS1U-10CC-LU	10 x 10in	2.6 in - 3.4 in	1	15lb	0.0005	6 kg	0.0002	16 lb	\$1,016.00
102430	CAPS1U-20CC-LU	10 x 10in	2.6 in - 3.4 in	1	30lb	0.001	15 kg	0.0005	16 lb	\$1,016.00
102431	CAPS1U-50CC-LU	10 x 10in	2.6 in - 3.4 in	1	60lb	0.002	30 kg	0.001	16 lb	\$1,016.00
102432	CAPS1U-50DD-LU	12 x 12in	3.3 in - 4.4 in	1	60lb	0.002	30 kg	0.001	24 lb	\$1,103.00
102433	CAPS1U-100DD-LU	12 x 12in	3.5 in - 4.4 in	1	150lb	0.005	60 kg	0.002	24 lb	\$1,103.00
102434	CAPS1U-50EE-LU	18 x 18in	3.5 in - 4.4 in	1	60lb	0.002	30 kg	0.001	62lb	\$1,364.00
102435	CAPS1U-100EE-LU	18 x 18in	3.5 in - 4.4 in	1	150lb	0.005	60 kg	0.002	62lb	\$1,364.00
102436	CAPS1U-200EE-LU	18 x 18in	3.5 in - 4.4 in	1	200lb	0.01	100 kg	0.005	62lb	\$1,364.00
102458	CAPS4U-100GG-LU	24 x 24in	3.4 in - 3.6 in	4	150 lb	0.005	60 kg	0.002	121 lb	\$4,794.00
102460	CAPS4U-250GG-LU	24 x 24in	3.4 in - 3.6 in	4	300 lb	0.01	150 kg	0.005	121 lb	\$4,794.00
102461	CAPS4U-500GG-LU	24 x 24in	3.4 in - 3.6 in	4	600 lb	0.02	300 kg	0.01	121 lb	\$4,794.00
102466	CAPS4U-100HH-LU	30 x 30in	3.4 in - 3.6 in	4	150 lb	0.005	60 kg	0.002	187 lb	\$5,047.00
102467	CAPS4U-250HH-LU	30 x 30in	3.4 in - 3.6 in	4	300 lb	0.01	150 kg	0.005	187 lb	\$5,047.00
102468	CAPS4U-500HH-LU	30 x 30in	3.4 in - 3.6 in	4	600 lb	0.02	300 kg	0.01	187 lb	\$5,047.00
102469	CAPS4U-1000HH-LU	30 x 30in	3.4 in - 3.6 in	4	1500 lb	0.05	600 kg	0.02	187 lb	\$5,047.00
102470	CAPS4U-1000KK-LU	36 x 36in	3.5 in	4	1500 lb	0.05	600 kg	0.02	250 lb	\$5,665.00
102471	CAPS4U-2500KK-LU	36 x 36in	3.5 in	4	3000 lb	0.1	1500 kg	0.05	250 lb	\$5,665.00
102472	CAPS4U-5000KK-LU	36 x 36in	3.5 in	4	6000 lb	0.2	3000 kg	0.1	250 lb	\$5,665.00
102473	CAPS4U-1000NN-LU	48 x 48in	3.5 in	4	1500 lb	0.05	600 kg	0.02	390 lb	\$6,846.00
102474	CAPS4U-2500NN-LU	48 x 48in	3.5 in	4	3000 lb	0.1	1500 kg	0.05	390 lb	\$6,846.00
102475	CAPS4U-5000NN-LU	48 x 48in	3.5 in	4	6000 lb	0.2	3000 kg	0.1	390 lb	\$6,799.00
Pit Frames										
104322	YEG-HH-SUS	30 X 30in (HH)								\$2,354.00
104323	YPF01KKT-MUS	36 x 36in (KK)								\$2,573.00
104324	YPF01NNT-MUS	48 x 48in (NN)								\$3,092.00

PRECISION INDUSTRIAL WEIGHING

www.ricelake.com | Phone: 800-472-6703

RICE LAKE