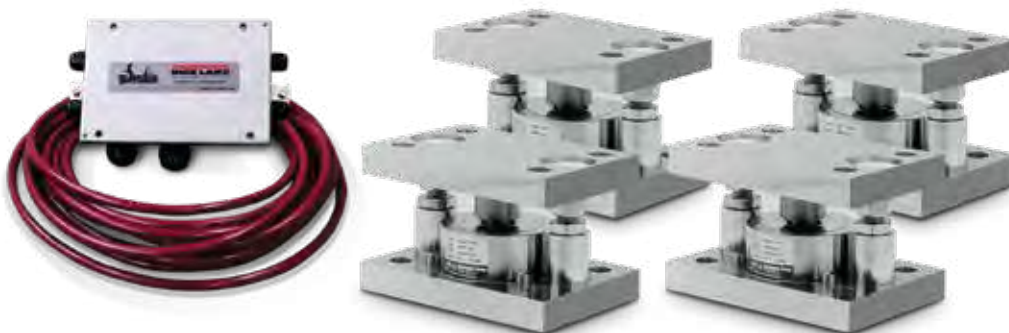


RLC

Stainless Steel Weigh Modules, VPG Revere



Available in configurations with three or four mounting assemblies.
Picture is a representation of actual product.

The RLC self-aligning silo mount, together with the RLC load cell family, are an ideal solution for process control, batch weighing, silo/hopper and belt scale applications. The RLC mount incorporates a removable rocker pin design that uses hardened stainless steel components on all load-bearing surfaces. The fully stainless steel construction guarantees long-term reliability.



Module with hermetically sealed RLC compression canister load cell.

Complete Kit Includes

- One JB4SS NEMA Type 4X stainless steel signal trim junction box
- Three or four RLC stainless steel compression mounts
- Three or four RLC stainless steel hermetically sealed compression disk load cells
- 25 ft of our hostile environment EL147HE SURVIVOR® load cell cable

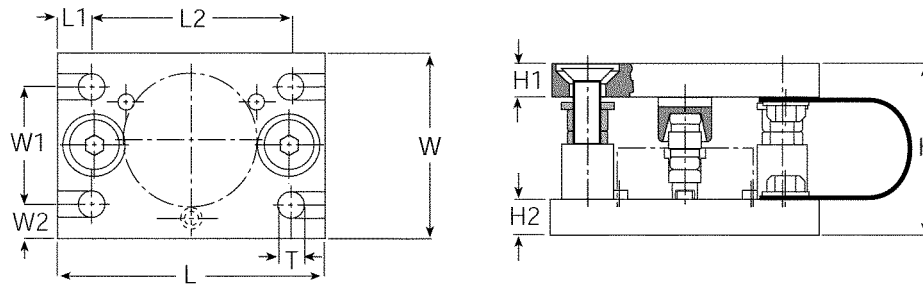
Standard Features

- Capacities (per module): 0.5-5 t (1,102.3-11,023.1 lb)
- Matched output load cells eliminate trimming
- 304 stainless steel construction
- Rocker pin design allows movement in all directions
- Hermetically sealed, IP66/68 stainless steel load cells
- Easy load cell replacement
- Integral jacking/shipping bolts

Applications

- Medium-capacity tanks, bins and hoppers
- Washdown applications
- Process control and batch weighing

Load Cell Certifications



Dimensions

Rated Capacity	H	H1	H2	L	L1	L2	T	W	W1	W2
ton/mm										
0.5-1	80.00	20.00	15.00	150.00	15.00	120.00	14 (top plate)	100.00	70.00	15.00
2-5	100.00	20.00	20.00	160.00	20.00	120.00	13.8 (bottom plate)	110.00	70.00	20.00
lb/in										
1,102.3-2,204.6	2.96	0.79	0.59	5.91	0.59	4.72	0.55 (top plate)	3.94	2.76	0.59
4,409.2-11,023.1	3.94	0.79	0.79	6.30	0.79	4.72	0.54 (bottom plate)	4.33	2.76	0.79

Order Information

Load Rating (Per Module)	Part#	Price
Single Module (Includes Load Cell)		
0.5t	36401	\$1,130.00
1t	36402	\$1,130.00
2t	36403	\$1,305.00
3.5t	36404	\$1,305.00
5t	36405	\$1,305.00
3-Module Kit		
0.5t	36406	\$3,665.00
1t	36407	\$3,665.00
2t	36408	\$3,835.00
3.5t	36409	\$3,835.00
5t	36410	\$3,835.00
4-Module Kit		
0.5t	36411	\$4,795.00
1t	36412	\$4,795.00
2t	36413	\$5,115.00
3.5t	36414	\$5,115.00
5t	36415	\$5,115.00

Replacement Rocker Pin Set*

Load Rating (Per Module)	Part #	Price
250 kg-1t	170875	\$115.00
2t-5t	170876	\$115.00
10t	170877	\$115.00

*Kit includes upper cup, rocker pin and grease