

Minebea Intec Combics

Explosion Proof Bench and Floor Platform Scales

Specifications

Cable Length:

Up to 30 x 30 - 10 ft
36 x 36 and over - 20 ft

Operating Temperature:

14° F to 104° F

Ingress Protection Rating:

NEMA Type 4/IP67

Indicator Option:

CIXS3-U

Warranty:

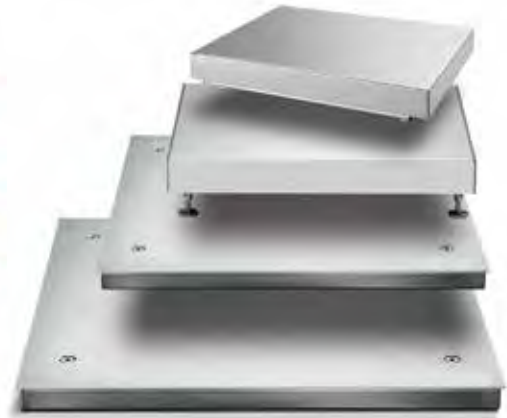
Two-year limited warranty
Accessories: One-year limited warranty

Approvals:

FM approved Classes 1,2,3, Division 1, Groups ABCDEGFT4, US and Canadian hazardous areas, when used with CIXS3-U or FCT01-X indicator



*GLP/GMP requires use of Combics 1 Plus or higher digital weight indicator



Standard Features

- FM Approved: Classes 1,2,3, Division 1, Groups ABCDEGFT4, U.S. and Canadian hazardous areas, when used with CIX53-U
- Can be used in areas where explosive gas and dust mixtures occur
- Documentation to verify intrinsic safety available upon request
- Completely constructed with AISI 304 stainless steel
- All units are built for easy cleaning and disinfection and meet HACCP and FDA requirements for the food industry
- Load cells are hermetically sealed, IP68 protection rated
- Load cell cables are 10 ft (for bases up to 30 x 30 in) or 20 ft (for bases 36 x 36 in and larger)
- NEMA Type 4/IP67 protection rated
- Pit frames for flush mounting available
- High resolution 30,000 d

APPROVALS



Applications

- Pharmaceutical, chemical, electronics, food processing, precious metals, metal production and processing
- Regulatory Compliance: NEMA, HACCP, FDA, GLP/GMP*, FM

Part Number/Price

RLWS PN	Minebea PN	Dimensions	Height Adjustment	# Load Cells	Capacity	Readability	Capacity	Readability	Est. Weight	Price
100919	CAPXS1U-10CC	10 x 10 in	2.37 in	1	15 lb	0.0005	6 kg	0.0002	16 lb	\$1,088.00
100920	CAPXS1U-20CC	10 x 10 in	2.37 in	1	30 lb	0.001	15 kg	0.0005	16 lb	\$1,088.00
100921	CAPXS1U-50CC	10 x 10 in	2.37 in	1	60 lb	0.002	30 kg	0.001	16 lb	\$1,088.00
100922	CAPXS1U-50DD	12 x 12 in	3.87 in	-	60 lb	0.002	30 kg	0.001	24 lb	\$1,217.00
100923	CAPXS1U-100DD	12 x 12 in	3.87 in	1	150 lb	0.005	60 kg	0.002	24 lb	\$1,217.00
100924	CAPXS1U-50EE	18 x 18 in	3.5 in	1	60 lb	0.002	30 kg	0.001	62 lb	\$1,505.00
100925	CAPXS1U-100EE	18 x 18 in	3.5 in	1	150 lb	0.005	60 kg	0.002	62 lb	\$1,505.00
100926	CAPXS1U-200EE	18 x 18 in	3.5 in	1	200 lb	0.01	100 kg	0.005	62 lb	\$1,505.00
100934	CAPXS4U-250GG	24 x 24 in	3.31 in	4	300 lb	0.01	150 kg	0.005	12 lb	\$4,799.00
100935	CAPXS4U-500GG	24 x 24 in	3.31 in	4	600 lb	0.02	300 kg	0.01	12 lb	\$4,799.00
100943	CAPXS4U-500HH	30 x 30 in	3.31 in	4	600 lb	0.02	300 kg	0.01	187 lb	\$5,047.00
100944	CAPXS4U-1000HH	30 x 30 in	3.31 in	4	1500 lb	0.05	600 kg	0.02	187 lb	\$5,047.00
100945	CAPXS4U-1000KK	36 x 36 in	3.75 in	4	1500 lb	0.05	600 kg	0.02	250 lb	\$5,979.00
100946	CAPXS4U-2500KK	36 x 36 in	3.75 in	4	3000 lb	0.1	1500 kg	0.05	250 lb	\$5,768.00
100947	CAPXS4U-5000KK	36 x 36 in	3.75 in	4	6000 lb	0.2	3000 kg	0.1	250 lb	\$5,768.00
100949	CAPXS4U-2500NN	48 x 48 in	3.75 in	4	3000 lb	0.1	1500 kg	0.05	390 lb	\$7,140.00
100950	CAPXS4U-5000NN	48 x 48 in	3.75 in	4	6000 lb	0.2	3000 kg	0.1	390 lb	\$7,140.00