

BOROSILICATE SIGHT GLASS



PYREX® ANNULAR EDGE REPLACEMENT GLASS

MANUFACTURED FROM BOROFLOAT® BOROSILICATE GLASS

Low Pressure 400°F, High Pressure 500°F

- For ovens, kettles, furnaces, stills, pressure vessels, chemical tanks, etc.
- Outstanding thermal resistance
- High chemical durability
- Excellent mechanical strength
- Supplied with 1/2" sandblasted sealing surface
- Thickness for all sizes is 3/4"

Low Pressure		High Pressure		Diameter (inches)
MODEL EFI	Pressure Rating PSIG	MODEL EFI	Pressure Rating PSIG	
AE695620	150	AE695621	450	4
AE695610	100	AE695611	300	5
AE692540	60	AE692541	180	6
AE694790	45	AE694791	135	6-3/4
AE694800	30	AE694801	90	8-3/8

SPECIAL FLAT GASKETS

Made in any Inside or Outside Diameter.

Thickness: 1/32", 1/16" or 1/8"

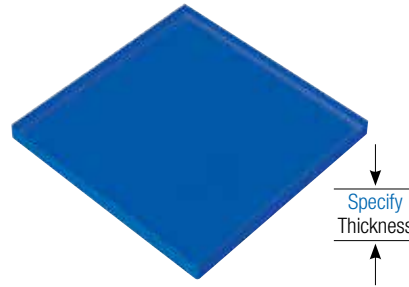
FIBER	CORK
GRAPHITE	NEOPRENE
FKM (Viton™)	GYLON®
PTFE	PTFE ENVELOPE

When ordering specify Inside Diameter, Outside Diameter and Thickness



BLUE BOROSILICATE GLASS

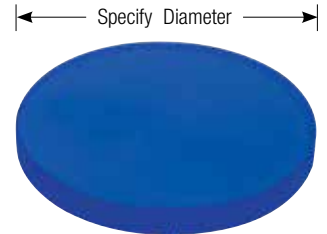
CIRCLES, SQUARES OR RECTANGLES



MODEL EFI S-2130 BLUE
Specify Length, Width and Thickness

For Furnace observation

- Temperature Rating: 400°F
- Specify Required Size
- Thickness: 1/8", 3/16", 7/32" (furnished for 1/4")



MODEL EFI C-2140 BLUE

CLEAR BOROSILICATE GLASS

CIRCLES, SQUARES OR RECTANGLES

Annealed 450°F, Tempered 500°F

- Specify Required Size
- Thickness: 1/8", 3/16", 1/4", 3/8", 1/2", 5/8", 3/4", 1", 1-1/4"

NOTE: 1/8" or 3/16" thickness not available in Tempered.



MODEL EFI S-2130
Specify Length, Width, Thickness



MODEL EFI C-2140

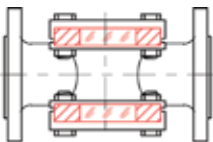
ANNEALED OR TEMPERED
QUARTZ AVAILABLE
FOR HIGHER TEMPERATURE APPLICATIONS

EFI SAFEPORT™

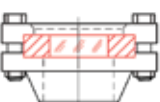
For the Highest Degree of Sight Window Safety

TYPICAL SAFEPORT APPLICATIONS

SLIGHT FLOW WINDOWS



SIGHT WINDOWS



MODEL EFI-SP

For use with: Sight Windows, Sight Flow Indicators, Hygienic Clamp Connections—Many other applications

ADVANTAGES:

- NO SHUTDOWNS
- NO REPLACEMENT PARTS
- NO PRODUCT LOSS
- NO MAINTENANCE

FEATURES:

- Glass Fused to Metal
- Can withstand temperatures up to 600°F
- Available in Steel, Duplex, HC, and Alloy C
- Reliability against failure due to mechanically pre-stressed glass
- Resistant to impact, pressure thermal and mechanical stresses; resistant to over torquing and unaffected by chips and scratches
- Provides for long and continuous service
- Reusable: Can be reused after removal from service
- Contributes to a safe work area
- Hygienic clamp connection available according to ASME BPE