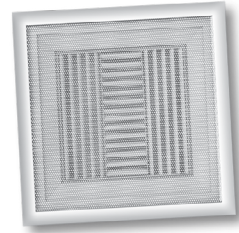


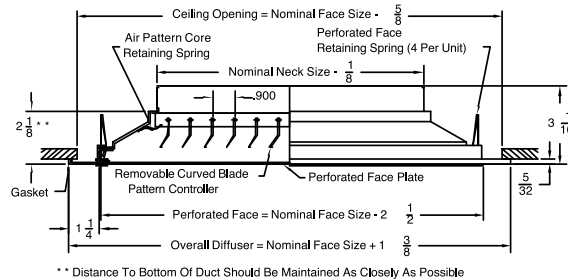
MODEL 7000/7000R



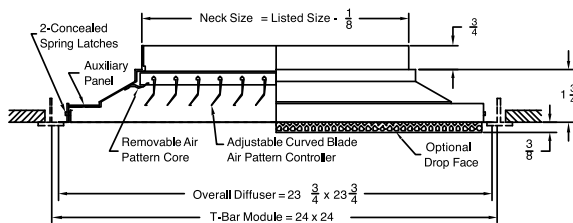
Model 7000 is designed for use in most types of ceilings for efficient, draft free air distribution. The perforated face blends well with most ceiling styles and provides the uncluttered appearance preferred by architects. It is ideal for applications requiring a variety of air diffusion configurations, corrosion resistant construction, and square or rectangular face and neck size combinations. Six frame styles with a large selection of square and rectangular neck sizes make the 7000 easy to specify for new or existing buildings.

- Extruded aluminum construction
- Curved blade pattern controllers mounted in the neck can be adjusted from vertical to horizontal discharge pattern
- Available in 1-way, 2-way opposite, 2-way corner, 3-way and 4-way air patterns
- Perforated face is removable allowing access for adjustment or cleaning
- Matching return available 7000R

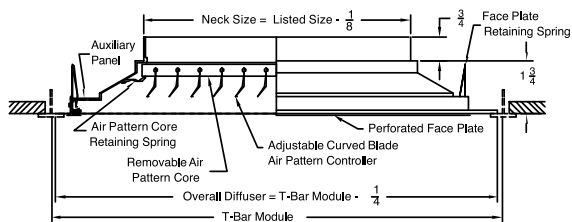
• Model: 7000-1 (Flush Ceiling Mount)



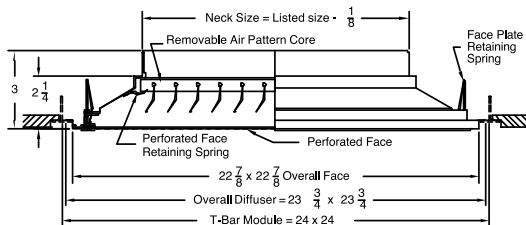
• Model: 7000-6 * (Lay in T-Bar 24x24 Grid Size)



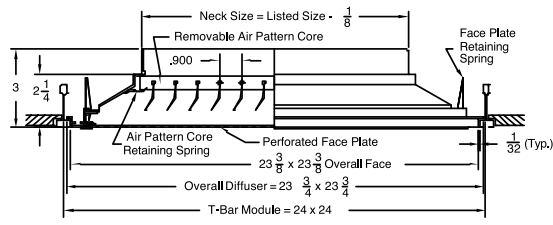
• Model: 7000-6 Lay in T-Bar (All sizes except 24x24)



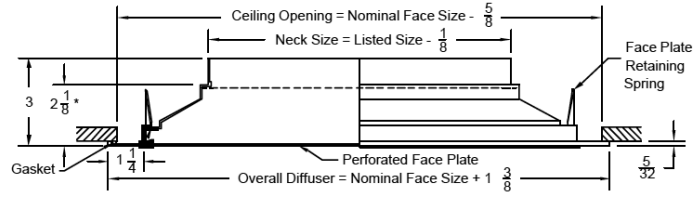
• Model: 7000-8 (Tegalur T-Bar)



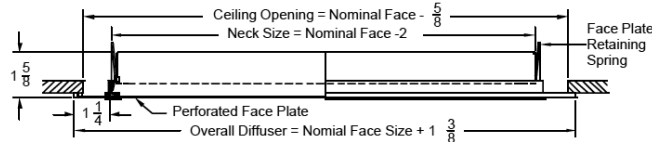
• Model: 7000-9 (Donn Finline Ceiling Grid)



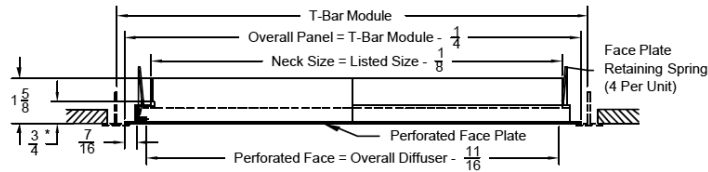
- Model: 7000R-1 (Surface Mount - Flat Border)



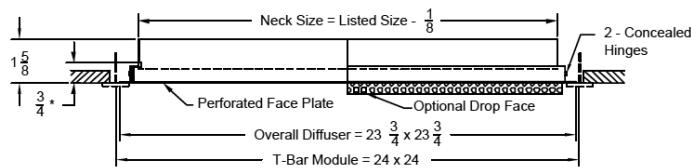
- Model: 7000R-1* (Surface Mount - Low Profile)



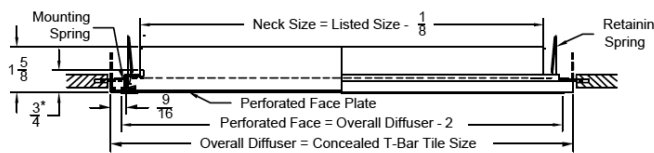
- Model: 7000R-6 (Lay in T-Bar All sizes except 24 x 24)



- Model: 7000R-6* (Lay in T-Bar - 24x24 Grid Size Only)



- Model: 7000R-7 (Concealed Spline)



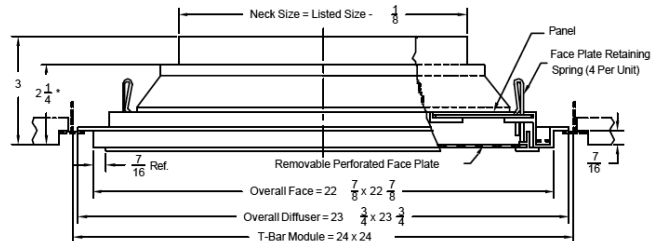
Max. Listed Size For Each Tile Size Shown.

Tile Size	Listed Size
12 x 12	10 x 10
24 x 12	22 x 10
24 x 24	22 x 22

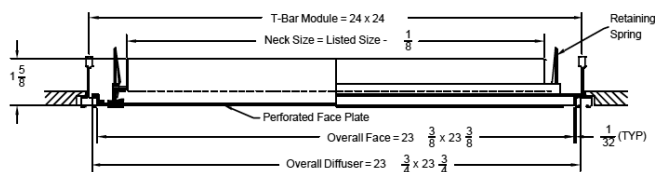
Smaller Listed Sizes Are Available For Each Tile Size

* Distance To Bottom Of Duct Should Be Maintained as Closely As Possible

- Model: 7000-R8 (Tegular T-Bar)



- Model: 7000-R9 (Donn Finline Ceiling Grid - Low Profile)



SERIES 7000 SPECIFICATIONS

SUPPLY — PERFORATED FACE — SQUARE NECK — CURVED PATTERN CONTROLLERS

7000-1	Surface Mounted
7000-6	T-bar Lay-in
7000-7	Concealed Spline
7000-8	Tegular T-bar
7000-9	Donn Finline

- Air Diffusers shall be aluminum model 7000 manufactured by METALAIRE. Units shall consist of aluminum 51% free area perforated face and an aluminum border and backpan. Perforated holes shall be 3/16" diameter on 1/4" staggered centers.
- Outer border of units shall be extruded aluminum construction. The perforated face shall be removable allowing access to the aluminum curved blade pattern controller mounted into the neck of the diffusers. Face shall be secured in place with tension spring clips. Pattern controller blades shall be individually adjustable and allow the discharge pattern to be adjustable from vertical to horizontal. Pattern controller blades shall pivot in friction mounted retainers. Retainers shall hold the deflector blade position throughout the specified operating range of the device. Metal friction wires are not acceptable.
- Diffusers shall be available in 1, 2-way opposite, 2-way corner, 3, and 4-way directional air patterns. Units shall have square inlets.
- The units shall be the size and quantity as outlined in the plans and specifications.
- Units shall be designed to integrate into the specified ceiling system.

RETURN/EXHAUST — PERFORATED FACE — SQUARE NECK

7000R-1	Surface Mounted
7000R-6	T-bar Lay-in
7000R-7	Concealed Spline
7000R-8	Tegular T-bar
7000R-9	Donn Finline

- Air Inlets shall be aluminum model 7000R manufactured by METALAIRE. Units shall consist of aluminum 51% free area perforated face and an aluminum border and backpan. Perforated holes shall be 3/16" diameter on 1/4" staggered centers. Units shall be designed for use in ducted return or exhaust applications.
- Outer border of units shall be extruded aluminum construction. The perforated face shall be removable allowing access to interior of diffuser. Face shall be secured in place with tension spring clips.
- The units shall be the size and quantity as outlined in the plans and specifications.
- Units shall be designed to integrate into the specified ceiling system.

Square Neck Options and Accessories:

OPPOSED BLADE DAMPER

- METALAIRE model D7A aluminum or D7 steel round opposed blade type dampers shall be provided. Damper shall consist of gang operated blades that can be adjusted from full open to full closed. Damper shall be adjusted with a handle accessible by opening the face of the diffuser.

EQUALIZING GRID

- METALAIRE model L9 aluminum square equalizing grid shall be provided. Equalizing grid shall consist of aluminum blades mounting in an aluminum frame.

Round Neck Optional Dampers and Accessories:

SQUARE TO ROUND TRANSITIONS

- Units to have square to round transitions allowing installation with round ductwork.

BUTTERFLY DAMPER

- METALAIRE model BDS aluminum round butterfly type dampers shall be provided. Damper shall consist of two butterfly style blades that can be adjusted from full open to full closed. Damper shall be adjusted with a screwdriver slot accessible by opening the face of the diffuser.

RADIAL SHUTTER DAMPER

- METALAIRE model RSD steel round radial shutter damper shall be provided. Damper shall consist of gang operated radial blades that slide perpendicular to air flow direction. The damper shall be adjusted from full open to full closed. Damper shall be adjusted with a screwdriver slot accessible by opening the face of the diffuser.

OPPOSED BLADE DAMPER

- METALAIRE model D3 aluminum or SD3 steel round opposed blade type dampers shall be provided. Damper shall consist of gang operated blades that can be adjusted from full open to full closed. Damper shall be adjusted with a screwdriver slot accessible by opening the face of the diffuser.

EQUALIZING GRID

- METALAIRE model G3 aluminum round equalizing grid shall be provided. Equalizing grid shall consist of 1/2" x 1/2" x 1/2" aluminum cubed core mounting in an aluminum frame.

Performance Specification

The manufacturer shall provide published performance data. Data shall be tested in accordance to ANSI/ASHRAE Standard 70-2006.

Paint Specification

Process shall be anodic electro-deposition using an anodic acrylic paint. Units shall undergo pre-treatment including a pressurized spray stage using an alkaline cleaner and de-ionized water rinse.

7000 MODEL NUMBER SPECIFICATION PERFORATED CEILING DIFFUSER — EXTRUDED ALUMINUM

Model		Neck									Module	
		6	8	9	10	12	14	15	16	18		
7000-1	Supply Surface Mount	6	X									12 x 12
7000R-1	Return Surface Mount	6	X									14 x 14
		8		X								
		6	X									15 x 15
		8		X								
		9			X							
		6	X									16 x 16
		8		X								
		9			X							
		10				X						
		6	X									18 x 18
		8		X								
		9			X							
		10				X						
		12					X					
		6	X									20 x 20
		8		X								
		9			X							
		10				X						
		12					X					
		14						X				
		6	X									21 x 21
		8		X								
		9			X							
		10				X						
		12					X					
		14						X				
		15							X			
		6	X	X	X	X	X	X	X	X	X	24 x 12
		6	X									24 x 24
		8		X								
		9			X							
		10				X						
		12					X					
		14						X				
		15							X			
		16								X		
		18									X	
		6	X	X	X	X	X	X	X	X	X	36 x 12
		6	X									36 x 24
		8		X								
		9			X							
		10				X						
		12					X					
		14						X				
		15							X			
		16								X		
		18									X	
		6	X	X	X	X	X	X	X	X	X	48 x 12
		6	X									48 x 24
		8		X								
		9			X							
		10				X						
		12					X					
		14						X				
		15							X			
		16								X		
		18									X	

7000 MODEL NUMBER SPECIFICATION PERFORATED CEILING DIFFUSER — EXTRUDED ALUMINUM

Air Pattern	Available Accessories		Available Finishes	
Standard	D7	Steel Opposed Blade Damper	Standard	
4W	D7A	Aluminum Opposed Blade Damper	01	White
Optional	L9	Equalizing Grid	Optional	
1W	TR	Square to Round Transition	02	Satin Silver
2W	TR Deep	Deep Square to Round Transition	03	Black
2WC	G3	Round Equalizing Grid	22	Black Back Pan
3W	BDS	Butterfly Damper	28	Custom Color
	RSD	Radial Shutter Damper		
	D3	Aluminum Round Opposed Blade Damper		
	SD3	Steel Round Opposed Blade Damper		

7000 MODEL NUMBER SPECIFICATION PERFORATED CEILING DIFFUSER — EXTRUDED ALUMINUM

Model		Neck										Module			
		6	8	9	10	12	14	15	16	18					
7000-6	Supply T-Bar Lay-in	6	X												12 X 12
7000R-6	Return T-Bar Lay-in	6	X	X	X	X	X	X	X	X	X	X	X	X	24 X 12
		6	X												20 X 20
		8		X											
		9			X										
		10				X									
		12					X								
		14						X							
		15							X						
		16								X					
		18									X				
		6	X												24 X 24
		8		X											
		9			X										
		10				X									
		12					X								
		14						X							
		15							X						
		16								X					
		18									X				
		6	X	X	X	X	X	X	X	X	X	X	X	X	48 X 12
		6	X												48 X 24
		8		X											
		9			X										
		10				X									
		12					X								
		14						X							
		15							X						
		16								X					
		18									X				

Air Pattern	Available Accessories		Available Finishes	
Standard	D7	Steel Opposed Blade Damper	Standard	
4W	D7A	Aluminum Opposed Blade Damper	01	White
Optional	L9	Equalizing Grid	Optional	
1W	TR	Square to Round Transition	02	Satin Silver
2W	TR Deep	Deep Square to Round Transition	03	Black
2WC	G3	Round Equalizing Grid	22	Black Back Pan
3W	BDS	Butterfly Damper	28	Custom Color
	RSD	Radial Shutter Damper		
	D3	Aluminum Round Opposed Blade Damper		
	SD3	Steel Round Opposed Blade Damper		

7000 MODEL NUMBER SPECIFICATION PERFORATED CEILING DIFFUSER — EXTRUDED ALUMINUM

Model		Neck							Module
		6	8	9	10	12	14	15	
7000-7	Concealed Spline	6	X						12 X 12 (-7 Frame Only)
7000-8	Tegular Ceiling	6	X						24 X 24
7000-9	Donn Finline	8		X					
		9			X				
		10				X			
		12					X		
		14						X	
15							X		

Air Pattern	Available Accessories		Available Finishes	
Standard	D7	Steel Opposed Blade Damper	Standard	
4W	D7A	Aluminum Opposed Blade Damper	01	White
Optional	L9	Equalizing Grid	Optional	
1W	TR	Square to Round Transition	02	Satin Silver
2W	TR Deep	Deep Square to Round Transition	03	Black
2WC	G3	Round Equalizing Grid	22	Black Back Pan
3W	BDS	Butterfly Damper	28	Custom Color
	RSD	Radial Shutter Damper		
	D3	Aluminum Round Opposed Blade Damper		
	SD3	Steel Round Opposed Blade Damper		

SERIES 7000 PERFORMANCE DATA MODEL 7000

Nominal Neck Size	fpm Neck Velocity Pv	200	300	400	500	600	700	800	900	
		.003	.006	.010	.016	.022	.030	.040	.050	
18 x 6	CFM	150	225	300	375	450	525	600	675	
	Pt	.016	.050	.060	.100	.140	.190	.250	.310	
	NC	<	<	20	25	30	35	40	40	
	Throw	4-Way	3-4-5	3-5-6	4-6-8	6-8-11	7-10-13	8-12-15	9-14-18	10-15-20
		3-Way	3-4-5	4-6-8	6-8-11	7-10-13	8-12-16	9-14-18	11-16-21	12-18-24
2-Way		4-6-8	6-8-11	7-11-14	9-13-17	11-16-21	12-18-24	14-21-28	18-27-33	
1-Way		5-7-9	6-9-12	8-12-16	11-16-21	13-19-25	15-22-29	17-25-33	19-28-38	
12 x 12	CFM	200	300	400	500	600	700	800	900	
	Pt	.016	.045	.066	.100	.150	.200	.260	.330	
	NC	<	20	25	25	30	35	40	40	
	Throw	4-Way	3-5-6	4-6-8	5-7-10	6-9-12	8-12-15	9-13-17	10-15-20	12-17-23
		3-Way	3-5-6	5-7-9	6-9-12	8-12-15	9-14-18	11-16-22	13-19-25	14-20-27
2-Way		5-7-9	6-9-12	8-12-16	11-16-21	12-18-24	15-22-29	17-25-33	18-27-36	
1-Way		6-9-12	8-12-16	10-15-20	12-18-24	15-22-29	17-25-33	18-27-36	21-31-42	
14 x 14	CFM	270	410	545	680	815	950	1090	1225	
	Pt	.018	.040	.070	.110	.160	.220	.280	.360	
	NC	<	20	25	28	33	37	40	43	
	Throw	4-Way	4-5-7	4-6-9	6-9-12	7-11-14	9-14-18	10-15-20	12-18-24	14-21-28
		3-Way	4-5-9	5-8-11	6-10-13	8-13-16	10-15-20	11-17-23	13-19-27	16-23-31
2-Way		5-7-10	6-9-13	8-12-18	11-17-22	12-19-26	16-23-31	18-26-36	19-29-39	
1-Way		6-9-12	8-12-18	10-15-22	13-19-26	15-23-30	17-25-35	19-28-39	21-31-43	
15 x 15	CFM	310	470	625	780	935	1090	1250	1405	
	Pt	.018	.050	.070	.110	.160	.210	.280	.350	
	NC	<	20	25	30	35	40	40	45	
	Throw	4-Way	4-6-8	5-7-10	7-10-13	8-12-16	10-15-20	12-17-23	13-19-26	15-23-30
		3-Way	5-7-9	6-9-12	8-12-15	9-14-18	11-16-22	13-19-26	15-23-30	18-26-35
2-Way		6-9-12	9-14-15	12-17-20	13-19-26	16-22-31	18-27-36	20-30-40	23-33-43	
1-Way		7-11-14	9-14-18	11-18-22	14-21-28	16-24-32	19-28-38	21-31-42	23-34-45	
16 x 16	CFM	355	590	710	885	1060	1240	1415	1595	
	Pt	.018	.047	.070	.109	.155	.212	.280	.350	
	NC	<	20	25	30	35	40	40	45	
	Throw	4-Way	5-7-9	6-8-11	8-10-14	9-13-18	10-15-21	13-18-27	14-20-28	16-22-31
		3-Way	5-7-11	6-9-13	8-13-17	10-15-22	13-19-26	15-22-30	18-25-36	19-29-39
2-Way		6-10-12	9-14-16	11-17-24	14-21-28	17-25-32	19-26-34	21-34-40	24-34-44	
1-Way		7-10-16	9-15-18	12-18-26	15-22-32	18-27-36	19-28-37	24-35-42	26-36-46	
18 x 18	CFM	450	675	900	1125	1350	1575	1800	2025	
	Pt	.019	.050	.070	.110	.160	.220	.290	.360	
	NC	<	20	25	30	35	40	40	45	
	Throw	4-Way	5-7-10	6-9-12	8-12-16	10-15-20	12-18-24	14-21-28	16-24-32	18-27-36
		3-Way	5-7-12	7-11-14	9-14-18	11-16-22	13-19-26	16-24-31	18-27-36	21-31-41
2-Way		8-12-18	10-15-20	13-19-26	16-24-32	20-29-39	23-34-45	26-39-52	29-43-58	
1-Way		9-14-22	11-16-24	15-23-30	18-27-36	22-32-43	25-37-49	28-42-56	30-45-60	

CEILING
DIFFUSERS

PERFORATED
CEILING DIFFUSERS

7000/7000R

SERIES 7000 PERFORMANCE DATA MODEL 7000R

Nominal Neck Size	fpm Neck Velocity	200	300	400	500	600	700	800
	Pv	.013	.030	.050	.080	.110	.150	.200
6 x 6	CFM	50	75	100	125	150	175	200
	NC	<	<	<	<	20	25	30
8 x 6	CFM	65	100	130	165	200	230	265
	NC	<	<	<	<	20	25	30
8 x 8	CFM	90	130	175	220	265	310	350
	NC	<	<	<	20	25	30	35
9 x 9	CFM	110	170	225	280	335	390	450
	NC	<	<	<	20	25	30	35
10 x 6	CFM	80	125	165	205	245	290	330
	NC	<	<	<	20	25	30	35
10 x 10	CFM	140	210	275	345	415	485	550
	NC	<	<	<	20	25	30	35
12 x 6	CFM	100	150	200	250	300	350	400
	NC	<	<	<	20	25	30	35
12 x 12	CFM	200	300	400	500	600	700	800
	NC	<	<	<	20	25	30	35
15 x 15	CFM	310	470	625	780	935	1090	1250
	NC	<	<	20	25	30	35	40
18 x 18	CFM	450	675	900	1125	1350	1575	1800
	NC	<	<	20	25	30	35	40
20 x 20	CFM	555	830	1110	1385	1660	1940	2215
	NC	<	<	20	28	33	38	42
22 x 10	CFM	305	455	610	760	910	1065	1215
	NC	<	<	20	25	30	35	40
22 x 22	CFM	670	1010	1345	1680	2015	2350	2690
	NC	<	<	20	28	33	38	42
34 x 22	CFM	1040	1555	2075	2595	3115	3635	4150
	NC	<	<	20	28	35	40	45
46 x 22	CFM	1405	2105	2810	3510	4210	4915	5615
	NC	<	<	23	30	38	42	45

CEILING
DIFFUSERS

PERFORATED
CEILING DIFFUSERS

7000/7000R