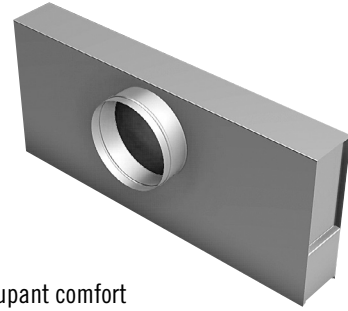
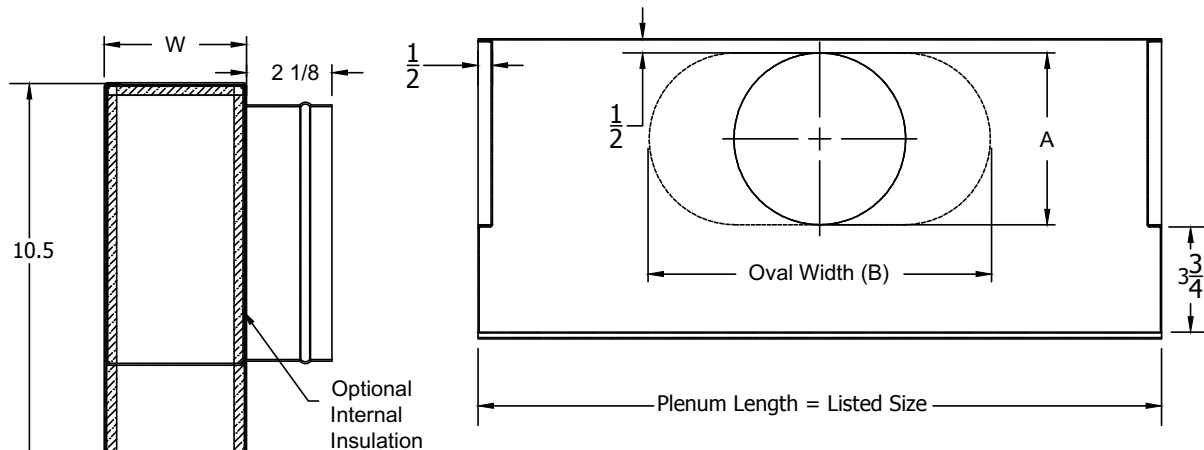


MODEL UP-6600

Model UP-6600 Boot Plenum is an easily installed, economical accessory to the 6600 Linear Slot Diffuser. UP-6600 Boot Plenums are designed to connect the series 6600 to the ducted supply or return. Factory supplied units reduce both job site fabrication and installation labor.



- Units provide an even distribution of air into the diffuser to maximize inductions and occupant comfort
- Available widths to fit 6600 with 1 to 8 slots
- Standard lengths are 24", 36", 48", 60" and 72"
- UPI-6600 is fully insulated including the end caps. Optional Thermopure insulation is available. External insulation also available
- Available with optional LQ, locking quadrant damper, ID, inlet damper, FODR, face operated damper, or ROD, remote operated damper
- UP-6600 is shipped separately from the 6600 linear slot diffuser and requires field attachment



Inlet Chart			
Size	Type	A	B
6	Round	5 7/8	
8	Oval	5 7/8	8 15/16
10	Oval	5 7/8	12 1/16
12	Oval	5 7/8	15 1/4
14	Oval	5 7/8	18 7/16

Model 6650	20-6 22-6	30-3 32-6	40-7/42-7 40-8/42-8 40-9/42-9	50-152-1 12-1/11-1 10-6/12-6
Number of Slots	DIM W (I.D. Width)	DIM W (I.D. Width)	DIM W (I.D. Width)	DIM W (I.D. Width)
1	2 3/16	2 1/2	2 1/16	2 1/4
2	3 5/16	3 5/8	3 5/16	3 1/2
3	4 11/16	4 1/2	4 9/16	4 3/4
4	5 7/8	6 3/16	5 13/16	6
5	7 1/16	8 3/8	7 1/16	7 1/4
6	8 5/8	8 7/8	8 5/16	8 7/16
7	9 15/16	10 1/4	9 5/8	9 3/4
8	13 13/16	11 1/8	11 1/8	11

Model 6675	20-6 22-6	30-3 32-6	40-7/42-7 40-8/42-8 40-9/42-9	50-152-1 12-1/11-1 10-6/12-6
Number of Slots	DIM W (I.D. Width)	DIM W (I.D. Width)	DIM W (I.D. Width)	DIM W (I.D. Width)
1	2 5/16	2 3/4	2 5/16	2 1/2
2	3 13/16	4 3/16	3 13/16	4
3	5 1/2	5 3/4	5 1/16	5 1/2
4	7 1/8	7 1/4	6 13/16	7
5	8 5/16	8 5/8	8 3/16	8 1/2
6	9 13/16	10 1/8	9 13/16	13 13/16
7	11 5/16	11 5/8	11 5/16	11 7/16
8	12 3/4	13 1/16	12 7/8	13

Model 6610	20-6 22-6	30-3 32-6	40-7/42-7 40-8/42-8 40-9/42-9	50-152-1 12-1/11-1 10-6/12-6
Number of Slots	DIM W (I.D. Width)	DIM W (I.D. Width)	DIM W (I.D. Width)	DIM W (I.D. Width)
1	2 5/8	2 15/16	2 9/16	2 3/4
2	4 7/16	4 3/4	3 3/8	4 1/2
3	6 1/8	6 1/2	6 1/16	6 1/8
4	7 7/8	8 3/16	7 13/16	8
5	9 3/4	10 1/16	9 5/8	9 11/16
6	1 3/8	11 3/4	11 3/8	11 1/2
7	14 1/4	13 9/16	13 1/8	13 13/16
8	15	15 1/4	14 7/8	14 15/16

Frame Styles							
Length = L = Listed Size ± Linear End Types							
Description	UP/UIP	Border Size	2 EB	1 EB	No Ends	2 EC	1 EC
T-Bar Lay-in	10 - 6	1 - 1/8	-2 1/2	-1 3/8	±0	- 3/16	-7/8
Screw Mount	11 - 1	Not Recommended For This Frame Style					
Concealed Mount	12 - 1	1 - 1/8	±0	±0	±0	NR**	NR**
T-Bar Lay-in	20 - 6	3/4	-1 3/4	-1	±0	NR**	NR**
T-Bar Lay-in	30 - 6	1/2	-1 1/4	-3/4	±0	NR**	NR**
Concealed Spline	40 - 7	22/32	-7/8	-9/16	±0	NR**	NR**
Drop Face	40 - 8	22/32	-7/8	-9/16	±0	NR**	NR**
Bolt Slot	40 - 9	22/32	-7/8	-9/16	±0	NR**	NR**
Sub Plaster Frame	22 - 73	3/4	-1 3/8	-1	±0	NR**	NR**
Sub Plaster/Wall Frames	22 - 74	3/4	-1 3/8	-1	±0	NR**	NR**
Sub Wall Frames	22 - 75	3/4	-1 3/8	-1	±0	NR**	NR**

Note: ** Not Recommended End Type For This Style

UP6600 MODEL NUMBER SPECIFICATION

MODEL UP6600

Mounting Styles	Border Width	T-bar Lay-in	Surface Mount	Concealed Spline	Drop Face	Narrow Tee	Mud Flange		
Screw Mounted	1 1/8		UP6600-11-1						
Concealed Mtg Hardware	1 1/8	UP6600-12-6	UP6600-12-1						
	3/4	UP6600-22-6							
	1/2	UP6600-32-6							
	25/32		UP6600-42-7					UP6600-42-8	UP6600-42-9
	1-13/16								
No Mtg. Hardware	1 1/8	UP6600-10-6							
	3/4	UP6600-20-6							
	1/2	UP6600-30-6							
	25/32		UP6600-40-7					UP6600-40-8	UP6600-40-9
	1-13/16								

Concealed Spline	Concealed Wall Mtg	Plaster Concealed Wall Mounting
Plaster Mtg Frame	Spline Plaster Mtg Frame	Wall Mtg Frame
3/4" Border UP6600-22-73	3/4" Border UP6600-22-74	3/4" Border UP6600-22-75

UP6600 MODEL NUMBER SPECIFICATION

MODEL UPI6600

Mounting Styles	Border Width	T-bar Lay-in	Surface Mount	Concealed Spline	Drop Face	Narrow Tee	Mud Flange		
Screw Mounted	1 1/8"		UPI6600-11-1						
Concealed Mtg Hardware	1 1/8"	UPI6600-12-6	UPI6600-12-1						
	3/4"	UPI6600-22-6							
	1/2"	UPI6600-32-6							
	25/32"		UPI6600-42-7					UPI6600-42-8	UPI6600-42-9
	1-13/16"								
No Mtg Hardware	1 1/8"	UPI6600-10-6							
	3/4"	UPI6600-20-6							
	1/2"	UPI6600-30-6							
	25/32"		UPI6600-40-7					UPI6600-40-8	UPI6600-40-9
	1-13/16"								

Concealed Spline	Concealed Wall Mtg	Plaster Concealed Wall Mounting
Plaster Mtg Frame	Spline Plaster Mtg Frame	Wall Mtg Frame
3/4" Border UPI6600-22-73	3/4" Border UPI6600-22-74	3/4" Border UPI6600-22-75

SERIES 6600 UP/UI PERFORMANCE DATA MODEL UP/UI-6650 —1 SLOT

6" Inlet	2' Length	CFM	15	30	45	60	75	90	105
		Static Pressure	.010	.038	.086	.153	.240	.345	.470
		Horizontal Throw	1-3-9	6-9-18	9-13-23	12-18-27	15-21-30	18-23-33	20-25-35
		NC	<15	20	28	35	41	45	47
	4' Length	CFM	30	60	90	120	150	180	210
		Static Pressure	.016	.063	.142	.252	.394	.567	.772
		Horizontal Throw	2-4-7	5-7-15	7-11-21	10-15-24	12-18-27	15-21-30	17-23-32
		NC	<15	24	34	41	45	46	49
8" Inlet	2' Length	CFM	20	35	50	65	80	95	110
		Static Pressure	.018	.054	.110	.185	.281	.396	.531
		Horizontal Throw	3-6-12	7-10-20	10-15-24	13-19-28	16-22-31	19-24-34	21-26-36
		NC	<15	18	27	33	38	42	44
	4' Length	CFM	40	70	100	130	160	190	220
		Static Pressure	.018	.056	.115	.194	.294	.415	.556
		Horizontal Throw	3-5-10	6-9-17	8-12-22	11-16-25	13-20-28	16-22-31	18-23-33
		NC	<15	24	33	39	43	45	45
10" Inlet	2' Length	CFM	30	45	60	75	90	105	120
		Static Pressure	.056	.126	.225	.351	.505	.688	.899
		Horizontal Throw	6-9-18	9-13-23	12-18-27	15-21-30	18-23-33	20-25-35	22-27-38
		NC	<15	22	29	34	39	42	43
	4' Length	CFM	60	90	120	150	180	210	240
		Static Pressure	.036	.082	.146	.227	.328	.446	.582
		Horizontal Throw	5-7-15	7-11-21	10-15-22	12-18-27	15-21-30	17-23-32	20-24-35
		NC	19	27	34	40	45	48	51
12" Inlet	2' Length	CFM	45	60	75	90	105	120	135
		Static Pressure	.047	.083	.129	.186	.254	.331	.419
		Horizontal Throw	9-13-23	12-18-27	15-21-30	18-23-33	20-25-35	22-27-38	23-28-40
		NC	24	28	32	35	39	42	45
	4' Length	CFM	90	120	150	180	210	240	270
		Static Pressure	.098	.175	.273	.393	.535	.699	.884
		Horizontal Throw	7-11-21	10-15-24	12-18-27	15-21-30	17-23-32	20-24-35	21-26-37
		NC	23	30	36	41	45	48	51

SERIES 6600 UP/UI PERFORMANCE DATA MODEL UP/UI-6650 — 2 SLOT

6" Inlet	2' Length	CFM	20	40	60	80	100	120	140
		Static Pressure	.007	.028	.064	.114	.178	.256	.349
		Horizontal Throw	1-2-8	4-8-17	8-12-25	11-17-31	14-21-35	17-25-38	12-29-41
		NC	<15	15	25	32	38	43	46
	4' Length	CFM	30	60	90	120	150	180	210
		Static Pressure	.010	.041	.093	.166	.259	.373	.507
		Horizontal Throw	1-2-5	3-5-10	5-8-16	7-10-21	9-13-26	10-16-30	12-18-32
		NC	<15	<15	24	32	37	41	43
8" Inlet	2' Length	CFM	25	45	65	85	105	125	145
		Static Pressure	.007	.023	.049	.084	.128	.181	.244
		Horizontal Throw	1-3-10	5-9-19	9-14-27	12-18-32	15-22-35	17-26-39	20-29-42
		NC	<15	<15	23	29	35	39	43
	4' Length	CFM	50	90	130	170	210	250	290
		Static Pressure	.014	.045	.094	.161	.245	.348	.468
		Horizontal Throw	3-4-9	5-8-16	8-11-23	10-15-29	12-18-32	14-22-35	17-25-38
		NC	<15	20	29	36	41	45	46
10" Inlet	2' Length	CFM	35	55	75	95	115	135	156
		Static Pressure	.013	.032	.059	.095	.139	.191	.252
		Horizontal Throw	3-6-15	7-11-23	10-16-30	13-20-34	16-24-37	19-28-40	21-30-43
		NC	<15	17	23	29	34	38	41
	4' Length	CFM	70	110	150	190	230	270	310
		Static Pressure	.019	.047	.088	.142	.207	.286	.377
		Horizontal Throw	4-6-12	6-10-19	9-13-26	11-16-31	13-20-34	16-23-27	18-27-39
		NC	<15	21	29	35	40	43	45
12" Inlet	2' Length	CFM	50	70	90	110	130	150	170
		Static Pressure	.024	.047	.078	.117	.163	.217	.279
		Horizontal Throw	6-10-21	10-15-29	12-19-33	15-23-36	18-27-39	21-30-42	24-32-45
		NC	<15		17	21	24	28	31
	4' Length	CFM	100	140	180	220	260	300	340
		Static Pressure	.027	.053	.087	.130	.181	.241	.310
		Horizontal Throw	5-9-17	8-12-24	10-16-30	13-19-33	15-23-36	17-26-39	20-29-41
		NC	16	23	29	34	38	41	43

SERIES 6600 UP/UI PERFORMANCE DATA MODEL UP/UI-6650 — 3 SLOT

6" Inlet	2' Length	CFM	25	50	75	100	125	150	175
		Static Pressure	.008	.033	.073	.130	.203	.293	.398
		Horizontal Throw	1-2-7	3-7-17	7-13-25	11-17-34	14-21-39	17-25-42	20-30-46
		NC	<15	15	24	31	36	40	43
	4' Length	CFM	40	75	115	150	190	225	265
		Static Pressure	.015	.054	.127	.216	.347	.486	.674
		Horizontal Throw	1-2-6	4-5-11	5-8-16	7-11-21	8-13-27	11-16-32	12-19-36
		NC	<15	<15	23	29	36	40	44
8" Inlet	2' Length	CFM	35	55	80	105	130	155	180
		Static Pressure	.009	.022	.046	.079	.122	.173	.233
		Horizontal Throw	2-3-12	4-9-19	8-14-27	12-18-35	15-22-39	18-26-43	20-31-46
		NC	<15	<15	21	28	33	37	41
	4' Length	CFM	70	110	160	210	260	310	360
		Static Pressure	.021	.052	.109	.188	.289	.410	.553
		Horizontal Throw	3-5-10	5-8-16	8-11-23	10-15-30	12-18-36	15-22-39	17-25-42
		NC	<15	18	27	34	39	44	47
10" Inlet	2' Length	CFM	45	65	90	115	140	165	190
		Static Pressure	.011	.023	.044	.072	.106	.147	.195
		Horizontal Throw	3-6-15	5-11-22	10-15-31	13-20-37	16-24-41	19-28-44	21-32-48
		NC	<15	<15	21	27	32	36	39
	4' Length	CFM	90	130	180	230	280	330	380
		Static Pressure	.023	.048	.091	.149	.221	.307	.407
		Horizontal Throw	4-6-13	6-9-18	8-13-25	11-16-33	13-20-36	16-23-39	18-27-42
		NC	<15	20	27	33	38	42	45
12" Inlet	2' Length	CFM	65	85	110	135	160	185	210
		Static Pressure	.022	.038	.063	.095	.133	.178	.229
		Horizontal Throw	5-11-22	9-14-29	12-19-36	15-23-40	18-27-44	21-31-47	24-35-50
		NC	<15	16	20	23	26	29	32
	4' Length	CFM	130	170	220	270	320	370	420
		Static Pressure	.027	.046	.077	.117	.164	.219	.282
		Horizontal Throw	6-9-18	8-12-24	10-16-31	13-19-37	15-23-40	17-26-43	20-30-46
		NC	17	22	27	33	37	41	44

SERIES 6600 UP/UI PERFORMANCE DATA MODEL UP/UI-6650 — 4 SLOT

6" Inlet	2' Length	CFM	40	65	90	115	140	165	190
		Static Pressure	.018	.047	.090	.147	.218	.302	.401
		Horizontal Throw	1-3-12	3-8-19	7-13-26	11-17-34	14-21-41	16-24-44	19-28-48
		NC	<15	16	24	30	36	39	42
	4' Length	CFM	60	100	<15	175	210	250	285
		Static Pressure	.031	.087	.159	.267	.385	.546	.709
		Horizontal Throw	1-3-7	4-6-12	6-8-17	7-11-21	9-13-26	10-15-31	12-17-35
		NC	<15	16	24	31	35	37	37
8" Inlet	2' Length	CFM	50	80	110	140	170	200	230
		Static Pressure	.014	.036	.069	.112	.164	.228	.301
		Horizontal Throw	2-5-15	5-12-24	10-16-32	14-21-41	17-25-45	20-29-49	23-34-53
		NC	<15	17	24	30	35	39	42
	4' Length	CFM	75	120	165	210	255	300	345
		Static Pressure	.022	.056	.107	.173	.255	.353	.467
		Horizontal Throw	2-5-9	5-7-15	7-10-20	9-13-26	10-16-31	12-18-37	14-21-42
		NC	<15	16	23	29	34	38	40
10" Inlet	2' Length	CFM	60	90	120	150	180	210	240
		Static Pressure	.014	.032	.056	.088	.127	.173	.226
		Horizontal Throw	3-7-18	7-13-26	12-18-35	15-22-42	18-26-46	21-31-50	24-35-54
		NC	<15	17	23	29	33	37	41
	4' Length	CFM	95	135	180	225	270	315	360
		Static Pressure	.021	.043	.077	.120	.174	.236	.308
		Horizontal Throw	4-6-12	6-8-17	7-11-22	9-14-28	11-17-33	13-19-38	15-22-41
		NC	<15	16	23	28	33	36	39
12" Inlet	2' Length	CFM	80	120	160	200	240	280	320
		Static Pressure	.018	.041	.073	.114	.164	.223	.292
		Horizontal Throw	5-12-24	12-18-35	16-24-44	20-29-49	24-35-54	27-41-58	31-44-62
		NC	<15	<15	20	24	28	32	35
	4' Length	CFM	120	180	240	300	360	420	480
		Static Pressure	.018	.040	.071	.111	.159	.217	.283
		Horizontal Throw	5-7-15	7-11-22	10-15-29	12-18-37	15-22-42	17-26-46	20-29-49
		NC	<15	19	25	31	35	39	42

SERIES 6600 UP/UI PERFORMANCE DATA

MODEL UP/UI-6675 — 1 SLOT

6" Inlet	2' Length	CFM	20	35	50	65	80	95	110
		Static Pressure	.014	.043	.088	.148	.224	.316	.424
		Horizontal Throw	1-3-10	4-8-17	8-12-24	10-16-28	13-19-31	15-23-34	10-26-36
		NC	<15	18	26	32	37	41	45
	4' Length	CFM	30	55	75	97.5	120	145	165
		Static Pressure	.009	.026	.054	.091	.137	.194	.259
		Horizontal Throw	2-3-6	4-5-11	5-8-15	7-10-20	8-12-24	10-14-27	11-17-29
		NC	<15	18	25	30	36	40	44
8" Inlet	2' Length	CFM	25	40	55	70	85	100	115
		Static Pressure	.036	.093	.175	.284	.419	.580	.767
		Horizontal Throw	2-5-12	6-10-19	9-13-26	11-17-29	14-20-32	16-24-35	18-26-37
		NC	<15	17	24	30	35	39	41
	4' Length	CFM	40	60	85	105	130	150	175
		Static Pressure	.014	.032	.065	.099	.152	.202	.275
		Horizontal Throw	3-4-8	4-6-12	6-9-17	7-11-21	9-13-25	10-15-27	12-18-30
		NC	<15	17	24	29	34	38	42
10" Inlet	2' Length	CFM	35	45	55	65	75	85	95
		Static Pressure	.085	.140	.210	.293	.390	.501	.625
		Horizontal Throw	4-8-17	7-11-22	9-13-26	10-16-28	12-18-30	14-20-32	15-23-34
		NC	<15	17	22	26	30	33	35
	4' Length	CFM	55	70	85	100	115	130	145
		Static Pressure	.028	.045	.066	.092	.122	.155	.193
		Horizontal Throw	4-6-11	5-7-14	6-9-17	7-10-20	8-12-23	9-13-25	10-15-27
		NC	<15	17	21	25	28	31	34
12" Inlet	2' Length	CFM	65	85	110	135	160	185	210
		Static Pressure	.022	.038	.063	.095	.133	.178	.229
		Horizontal Throw	5-11-22	9-14-29	12-19-36	15-23-40	18-27-44	21-31-47	24-35-50
		NC	<15	16	20	23	26	29	32
	4' Length	CFM	130	170	220	270	320	370	420
		Static Pressure	.027	.046	.077	.117	.164	.219	.282
		Horizontal Throw	6-9-18	8-12-24	10-16-31	13-19-27	15-23-40	17-26-43	20-30-46
		NC	17	22	27	33	37	41	44

SERIES 6600 UP/UI PERFORMANCE DATA MODEL UP/UI-6675 — 2 SLOT

6" Inlet	2' Length	CFM	30	55	80	105	130	155	180
		Static Pressure	.009	.029	.061	.105	.161	.228	.308
		Horizontal Throw	1-3-10	4-9-19	8-14-27	12-18-35	15-22-39	18-26-43	20-31-46
		NC	<15	18	27	33	39	42	44
	4' Length	CFM	45	85	120	160	195	235	270
		Static Pressure	.009	.033	.065	.116	.172	.250	.330
		Horizontal Throw	1-3-6	4-6-12	6-8-17	8-11-23	9-14-28	11-17-33	13-19-37
		NC	<15	18	25	33	37	41	43
8" Inlet	2' Length	CFM	45	65	85	105	125	145	165
		Static Pressure	.007	.023	.049	.084	.128	.181	.244
		Horizontal Throw	1-3-10	5-9-19	9-14-27	12-18-32	15-22-35	17-26-39	20-29-42
		NC	<15	<15	23	29	35	39	43
	4' Length	CFM	70	100	130	160	190	220	250
		Static Pressure	.014	.028	.047	.071	.100	.135	.174
		Horizontal Throw	3-5-10	5-7-14	6-9-18	8-11-23	9-13-27	10-16-31	12-18-35
		NC	<15	17	23	28	33	37	39
10" Inlet	2' Length	CFM	50	70	90	110	130	150	170
		Static Pressure	.023	.045	.074	.111	.155	.207	.265
		Horizontal Throw	3-7-17	6-12-24	10-15-31	12-19-36	15-22-39	17-25-42	19-29-45
		NC	<15	17	22	27	32	35	38
	4' Length	CFM	75	105	135	165	195	225	255
		Static Pressure	.025	.050	.082	.123	.171	.228	.293
		Horizontal Throw	4-5-11	5-7-15	6-10-19	8-12-23	9-14-28	11-16-32	12-18-36
		NC	<15	16	21	26	30	34	37
12" Inlet	2' Length	CFM	73	95	120	145	170	195	220
		Static Pressure	.021	.036	.058	.084	.116	.152	.194
		Horizontal Throw	7-12-25	11-16-32	14-20-38	16-25-42	19-29-45	22-33-48	25-36-51
		NC	<15	18	21	25	28	31	34
	4' Length	CFM	110	145	180	220	255	295	330
		Static Pressure	.025	.044	.068	.102	.137	.183	.229
		Horizontal Throw	5-8-16	7-10-21	8-13-25	10-16-31	12-18-36	14-21-38	16-23-41
		NC	<15	20	24	29	33	36	39

SERIES 6600 UP/UI PERFORMANCE DATA

MODEL UP/UI-6675 — 3 SLOT

6" Inlet	2' Length	CFM	45	70	95	120	145	170	195
		Static Pressure	.012	.029	.053	.084	.122	.168	.221
		Horizontal Throw	1-3-12	3-8-19	6-13-26	10-17-33	13-20-40	16-24-45	18-27-48
		NC	<15	17	24	30	35	39	41
	4' Length	CFM	70	105	145	180	220	255	295
		Static Pressure	.017	.037	.071	.110	.165	.221	.296
		Horizontal Throw	2-4-8	4-6-12	6-8-17	7-10-21	8-13-25	10-15-29	11-17-34
		NC	<15	17	24	29	34	38	41
8" Inlet	2' Length	CFM	55	85	115	145	175	205	235
		Static Pressure	.012	.029	.054	.082	.124	.171	.224
		Horizontal Throw	2-5-15	5-11-24	9-16-32	13-20-40	16-24-46	19-28-50	22-33-53
		NC	<15	18	25	30	35	39	42
	4' Length	CFM	85	130	175	220	265	310	355
		Static Pressure	.013	.031	.057	.090	.130	.178	.233
		Horizontal Throw	2-5-10	5-8-15	7-10-20	8-13-25	10-15-31	12-18-36	14-20-41
		NC	<15	18	24	30	34	39	42
10" Inlet	2' Length	CFM	65	100	130	160	190	220	250
		Static Pressure	.015	.037	.062	.094	.132	.177	.229
		Horizontal Throw	3-7-18	7-14-28	12-18-36	15-22-44	18-26-48	20-30-51	23-35-55
		NC	<15	19	25	30	34	38	41
	4' Length	CFM	100	150	195	240	285	330	375
		Static Pressure	.018	.041	.070	.105	.149	.199	.257
		Horizontal Throw	3-6-12	6-9-17	8-11-23	9-14-28	11-16-33	13-19-38	14-22-42
		NC	<15	18	24	29	34	37	40
12" Inlet	2' Length	CFM	85	120	155	190	225	260	295
		Static Pressure	.022	.043	.072	.108	.152	.203	.261
		Horizontal Throw	5-11-24	10-17-33	14-21-43	18-26-48	21-31-52	24-36-56	27-41-59
		NC	<15	<15	18	22	26	30	33
	4' Length	CFM	130	180	235	285	340	390	445
		Static Pressure	.016	.031	.053	.078	.111	.146	.190
		Horizontal Throw	5-8-15	7-10-21	9-14-27	11-16-33	13-20-29	15-23-44	17-26-47
		NC	<15	18	24	29	33	37	39

SERIES 6600 UP/UI PERFORMANCE DATA MODEL UP/UI-6675 — 4 SLOT

6" Inlet	2' Length	CFM	50	80	110	140	170	200	230
		Static Pressure	.011	.029	.055	.089	.131	.181	.239
		Horizontal Throw	1-3-10	3-6-19	5-12-26	9-17-34	13-20-41	16-24-48	18-28-53
		NC	<15	16	23	30	35	39	43
	4' Length	CFM	75	120	165	210	255	300	345
		Static Pressure	.016	.042	.079	.129	.190	.263	.348
		Horizontal Throw	1-3-8	3-6-12	6-8-17	7-11-21	9-13-26	10-15-30	12-17-35
		NC	<15	16	23	29	34	37	39
8" Inlet	2' Length	CFM	70	100	130	160	190	220	250
		Static Pressure	.016	.042	.079	.129	.190	.263	.348
		Horizontal Throw	1-3-8	3-6-12	6-8-17	7-11-21	9-13-26	10-15-30	12-17-35
		NC	<15	18	24	29	33	37	39
	4' Length	CFM	105	150	195	240	285	330	375
		Static Pressure	.017	.034	.057	.086	.122	.163	.211
		Horizontal Throw	2-5-11	5-8-15	7-10-20	8-12-24	10-14-29	11-17-33	13-19-38
		NC	<15	17	23	28	32	36	39
10" Inlet	2' Length	CFM	80	110	140	170	200	230	260
		Static Pressure	.014	.027	.044	.065	.090	.119	.152
		Horizontal Throw	3-6-19	5-12-26	8-1-34	13-20-41	16-24-48	18-28-53	21-31-56
		NC	<15	17	23	27	32	35	38
	4' Length	CFM	125	165	210	255	300	345	390
		Static Pressure	.017	.030	.049	.072	.099	.131	.167
		Horizontal Throw	3-6-13	6-8-17	7-11-21	9-13-26	10-15-20	12-17-35	13-20-39
		NC	<15	16	22	26	30	34	37
12" Inlet	2' Length	CFM	100	140	180	220	260	300	340
		Static Pressure	.007	.014	.023	.034	.047	.063	.081
		Horizontal Throw	4-10-24	9-17-34	14-22-43	18-26-51	21-31-56	24-36-60	27-41-64
		NC	<15	16	20	23	26	29	32
	4' Length	CFM	150	210	270	330	390	450	510
		Static Pressure	.014	.028	.046	.069	.096	.128	.164
		Horizontal Throw	5-8-15	7-11-21	9-14-27	11-17-33	13-20-39	15-23-45	17-26-50
		NC	<15	19	24	28	32	36	39

SERIES 6600 UP/UI PERFORMANCE DATA MODEL UP/UI-6610—1 SLOT

6" Inlet	2' Length	CFM	30	45	60	75	90	105	120
		Static Pressure	.013	.029	.052	.082	.117	.160	.209
		Horizontal Throw	2-5-12	5-9-19	8-12-25	10-16-30	12-19-33	15-22-35	17-25-38
		NC	16	23	30	35	40	44	46
	4' Length	CFM	45	70	90	115	135	160	180
		Static Pressure	.012	.029	.048	.078	.107	.151	.191
		Horizontal Throw	2-4-8	4-6-12	5-8-16	7-10-20	8-12-23	9-14-28	10-16-30
		NC	16	23	29	34	39	43	46
8" Inlet	2' Length	CFM	40	50	65	80	95	110	125
		Static Pressure	.032	.051	.085	.129	.182	.244	.316
		Horizontal Throw	4-8-17	6-10-21	9-14-27	11-17-31	13-20-34	15-23-36	17-26-39
		NC	17	22	28	33	38	40	42
	4' Length	CFM	60	75	100	120	145	165	190
		Static Pressure	.017	.026	.047	.068	.099	.128	.170
		Horizontal Throw	3-5-10	4-6-13	6-9-17	7-10-21	8-13-25	10-14-29	11-16-31
		NC	17	21	28	32	37	40	43
10" Inlet	2' Length	CFM	40	55	70	85	100	115	130
		Static Pressure	.044	.083	.134	.197	.273	.361	.461
		Horizontal Throw	4-8-17	7-11-23	10-15-29	12-18-32	14-21-35	16-24-37	18-27-39
		NC	16	24	30	35	38	39	39
	4' Length	CFM	60	85	105	130	150	175	195
		Static Pressure	.016	.033	.050	.076	.102	.138	.172
		Horizontal Throw	3-5-10	5-7-15	6-9-18	8-11-23	9-13-26	10-15-30	11-17-31
		NC	<15	21	26	31	35	30	41
12" Inlet	2' Length	CFM	48	65	80	95	110	125	140
		Static Pressure	.018	.033	.050	.071	.095	.123	.154
		Horizontal Throw	5-10-20	9-14-27	11-17-31	13-20-34	15-23-36	17-26-39	19-29-41
		NC	<15	<15	19	23	26	29	32
	4' Length	CFM	70	100	120	145	165	190	210
		Static Pressure	.029	.058	.084	.123	.159	.211	.258
		Horizontal Throw	4-6-12	6-9-17	7-10-21	8-13-25	10-14-29	11-16-31	12-18-32
		NC	<15	21	25	30	33	35	37

SERIES 6600 UP/UI PERFORMANCE DATA MODEL UP/UI-6610—2 SLOT

6" Inlet	2' Length	CFM	30	55	80	105	130	155	180
		Static Pressure	.006	.020	.042	.072	.110	.156	.211
		Horizontal Throw	1-2-7	2-6-16	5-12-24	9-15-31	13-19-38	15-23-43	18-26-46
		NC	<15	18	27	33	39	42	44
	4' Length	CFM	45	85	120	160	15	235	270
		Static Pressure	.009	.031	.061	.109	.162	.235	.310
		Horizontal Throw	1-2-6	3-5-10	5-7-15	7-10-20	8-12-24	10-14-29	11-17-33
		NC	<15	18	25	33	37	41	43
8" Inlet	2' Length	CFM	45	65	85	105	125	145	165
		Static Pressure	.017	.035	.059	.090	.128	.172	.223
		Horizontal Throw	2-4-13	3-8-19	6-12-25	9-15-31	12-18-37	14-21-42	16-24-44
		NC	<15	18	24	29	33	37	40
	4' Length	CFM	70	100	130	160	190	220	250
		Static Pressure	.014	.028	.047	.071	.100	.135	.174
		Horizontal Throw	2-4-9	4-6-12	5-8-16	7-10-20	8-12-23	9-13-27	10-15-31
		NC	<15	17	23	28	33	37	39
10" Inlet	2' Length	CFM	50	70	90	110	130	150	170
		Static Pressure	.023	.045	.074	.111	.155	.207	.265
		Horizontal Throw	2-5-15	4-9-21	7-13-26	10-16-232	13-19-38	15-22-42	17-25-45
		NC	<15	17	22	27	32	35	38
	4' Length	CFM	75	105	135	165	195	225	255
		Static Pressure	.012	.024	.039	.059	.082	.109	.140
		Horizontal Throw	2-5-9	4-6-13	6-8-17	7-10-20	8-12-24	9-14-28	10-16-31
		NC	<15	16	21	26	30	34	37
12" Inlet	2' Length	CFM	60	90	120	150	180	210	240
		Static Pressure	.014	.032	.058	.090	.130	.176	.230
		Horizontal Throw	3-7-18	7-13-26	12-18-35	15-22-42	18-26-46	21-31-50	24-35-54
		NC	<15	17	21	26	29	33	36
	4' Length	CFM	90	135	180	225	270	315	360
		Static Pressure	.017	.038	.068	.106	.153	.208	.272
		Horizontal Throw	3-6-11	6-8-17	7-11-22	9-14-28	11-17-33	13-19-39	15-22-42
		NC	<15	18	24	30	34	38	41

SERIES 6600 UP/UI PERFORMANCE DATA MODEL UP/UI-6610—3 SLOT

6" Inlet	2' Length	CFM	40	65	90	115	140	165	190
		Static Pressure	.007	.019	.036	.058	.087	.120	.160
		Horizontal Throw	1-2-6	2-4-16	4-8-22	6-13-28	9-17-34	12-20-40	15-23-46
		NC	<15	16	23	29	34	38	41
	4' Length	CFM	60	100	135	175	210	250	285
		Static Pressure	.011	.030	.055	.093	.134	.190	.247
		Horizontal Throw	1-2-6	2-5-10	4-7-44	6-9-18	7-11-21	8-13-25	10-14-29
		NC	<15	16	22	28	33	37	40
8" Inlet	2' Length	CFM	50	80	110	140	170	200	230
		Static Pressure	.010	.026	.049	.080	.117	.162	.215
		Horizontal Throw	1-3-10	3-6-19	5-12-26	9-17-34	13-20-41	16-24-48	18-28-53
		NC	<15	17	24	29	34	38	42
	4' Length	CFM	75	120	165	210	255	300	345
		Static Pressure	.008	.022	.041	.066	.098	.135	.179
		Horizontal Throw	1-3-8	3-6-12	6-8-17	7-11-21	9-13-26	10-15-30	12-17-35
		NC	<15	17	23	28	33	38	41
10" Inlet	2' Length	CFM	60	110	140	170	200	230	260
		Static Pressure	.008	.028	.045	.056	.092	.122	.155
		Horizontal Throw	2-4-14	5-12-26	9-17-34	13-20-41	16-24-48	18-28-53	21-31-56
		NC	<15	21	27	32	36	39	42
	4' Length	CFM	90	165	210	255	300	345	390
		Static Pressure	.008	.026	.042	.062	.086	.113	.145
		Horizontal Throw	2-4-9	6-8-17	7-11-21	9-13-26	10-15-30	12-17-35	13-20-39
		NC	<15	20	26	31	35	38	40
12" Inlet	2' Length	CFM	80	120	160	200	240	280	320
		Static Pressure	.010	.022	.038	.060	.086	.118	.154
		Horizontal Throw	3-6-19	6-14-29	11-19-38	16-24-48	19-29-54	22-34-58	26-38-62
		NC	<15	<15	19	23	28	31	35
	4' Length	CFM	120	180	240	300	360	420	480
		Static Pressure	.009	.021	.038	.059	.084	.115	.150
		Horizontal Throw	3-6-12	6-9-18	8-12-24	10-15-30	12-18-36	14-1-42	16-24-48
		NC	<15	18	25	30	35	38	41

SERIES 6600 UP/UI PERFORMANCE DATA MODEL UP/UI-6610—4 SLOT

6" Inlet	2' Length	CFM	50	80	110	140	170	200	230
		Static Pressure	.009	.022	.042	.069	.101	.140	.185
		Horizontal Throw	1-2-6	2-4-17	3-8-23	6-13-29	8-18-35	12-21-42	15-24-48
		NC	<15	16	23	30	35	39	43
	4' Length	CFM	75	120	165	210	255	300	345
		Static Pressure	.012	.032	.060	.098	.144	.200	.264
		Horizontal Throw	1-2-6	2-5-10	4-7-14	6-9-18	7-11-22	9-13-26	10-15-30
		NC	<15	16	23	29	34	37	39
8" Inlet	2' Length	CFM	70	100	130	160	190	220	250
		Static Pressure	.017	.035	.059	.090	.126	.169	.219
		Horizontal Throw	1-3-13	3-6-21	5-11-27	7-17-33	10-20-39	14-23-46	17-26-52
		NC	<15	18	24	29	33	37	39
	4' Length	CFM	105	150	195	240	285	330	375
		Static Pressure	.013	.027	.045	.068	.096	.129	.166
		Horizontal Throw	2-4-9	3-6-13	5-8-17	7-10-21	8-12-25	10-14-29	11-16-32
		NC	<15	19	26	32	36	40	42
10" Inlet	2' Length	CFM	80	120	160	200	240	280	320
		Static Pressure	.010	.022	.038	.060	.086	.118	.154
		Horizontal Throw	2-4-17	4-9-25	7-17-33	12-21-42	17-25-50	19-29-58	22-33-62
		NC	<15	19	26	32	36	40	42
	4' Length	CFM	125	180	240	300	360	420	480
		Static Pressure	.012	.025	.044	.069	.100	.136	.178
		Horizontal Throw	2-5-11	5-8-16	7-10-21	9-13-26	10-16-31	12-18-36	14-21-42
		NC	<15	18	25	30	35	39	42
12" Inlet	2' Length	CFM	90	140	190	240	290	340	390
		Static Pressure	.007	.017	.031	.050	.073	.101	.132
		Horizontal Throw	2-5-19	6-13-29	10-20-39	17-25-50	20-30-59	24-35-64	27-41-68
		NC	<15	16	21	25	28	32	35
	4' Length	CFM	135	210	285	360	435	510	585
		Static Pressure	.008	.020	.038	.060	.088	.120	.158
		Horizontal Throw	3-6-12	6-9-18	8-12-25	10-16-31	13-19-38	15-22-44	17-25-51
		NC	<15	19	25	30	35	39	42

PERFORMANCE NOTES FOR SERIES UP/UPI 6600

All data is tested in accordance with ANSI/ASHRAE 70-2006.

DEFINITION OF UNITS

1. On units without UP/UPI plenums, pressure drop reported is across the diffuser element only
The field supply plenum pressure drop should be included when determining system fan requirements
A good approximation of the static pressure requirements can be calculated by adding the velocity pressure through the plenum inlet to the diffuser section pressure drop
2. NC is based on a 4 ft. section of diffuser
The following table should be used to calculate sound levels for lengths other than 4 ft.
3. To correct throws for lengths other than the 4 ft. lengths used in determining catalog performance, throws should be adjusted per the following table

NC Correction for Length			
Length (feet)	2	4	6
NC Correction	-2	0	2
Throw Correction Multiplier for Length			
Length (feet)	2	4	8
Throw Correction	-7	1	1.2

4. All pressures are in inches of water
5. Isothermal throws are given for terminal velocities of 150, 100 and 50fpm, based upon 4' section
6. Vertical throw values are based on a 50fpm terminal velocity
7. For Vertical supply subtract one NC
8. For Returns minus pattern controllers, deduct 12 NC
9. Throw values are based on a 1-Way discharge from the slot. For 2-Way discharge, throw is based upon the number and size of the slots throwing in each direction, with the total supply air flow split equally between all slots in the unit
10. Data was collected in accordance to ASHRAE standard 70-2006 Method of Testing for rating the performance of air outlets and inlets

MODEL UP/UIPI-6660 RETURN PERFORMANCE DATA

Number of Slots	Negative Ps Inches of Water	.020	.040	.060	.080	.100	.150
1	CFM/FT	15	20	25	30	35	40
	NC	-	20	27	32	37	41
2	CFM/FT	35	50	60	70	80	95
	NC	-	22	27	32	37	41
3	CFM/FT	55	80	95	110	125	150
	NC	-	23	28	33	37	42
4	CFM/FT	70	100	120	140	155	190
	NC	-	24	30	34	37	44
5	CFM/FT	90	135	155	180	200	245
	NC	-	25	30	34	37	44
6	CFM/FT	110	155	195	220	245	300
	NC	-	26	33	37	40	96
7	CFM/FT	130	185	225	260	290	365
	NC	-	27	33	37	41	47
8	CFM/FT	140	200	245	280	310	385
	NC	-	28	34	38	42	48

MODEL UP/UIPI-6675 DUCT CONNECTED RETURN PERFORMANCE DATA

Number of Slots	Negative Ps Inches of Water	.020	.040	.060	.080	.100	.150
1	CFM/FT	25	35	45	50	55	70
	NC	-	21	29	32	35	42
2	CFM/FT	55	80	90	100	110	135
	NC	-	25	29	32	35	42
3	CFM/FT	90	115	140	160	180	220
	NC	-	26	32	36	40	46
4	CFM/FT	100	140	175	200	225	275
	NC	-	27	34	38	41	47
5	CFM/FT	140	185	225	260	290	360
	NC	-	28	34	38	42	48
6	CFM/FT	160	225	275	320	360	440
	NC	-	29	35	40	43	49
7	CFM/FT	175	250	305	350	395	480
	NC	-	30	36	40	44	50
8	CFM/FT	200	285	350	400	450	545
	NC	-	31	37	41	45	51

MODEL UP/UPI-6610 DUCT CONNECTED RETURN PERFORMANCE DATA

Number of Slots	Negative Ps Inches of Water	.020	.040	.060	.080	.100	.150
1	CFM/FT	35	50	60	70	80	95
	NC	-	25	31	36	40	45
2	CFM/FT	70	100	125	140	155	190
	NC	-	27	33	37	41	47
3	CFM/FT	105	150	185	210	235	285
	NC	-	29	35	39	43	49
4	CFM/FT	140	200	250	280	310	380
	NC	-	31	37	41	45	51
5	CFM/FT	175	250	300	350	390	475
	NC	-	32	38	42	46	52
6	CFM/FT	210	300	375	420	465	570
	NC	-	33	40	43	47	53
7	CFM/FT	245	350	425	490	545	665
	NC	-	34	41	44	47	54
8	CFM/FT	280	400	475	560	620	760
	NC	-	35	42	45	48	55