

SERIES E-57 SIGHT FLOW INDICATORS

NPT THREADED CONNECTION / WINDOW TYPE

CONSTRUCTION: BRONZE, CARBON STEEL, 316 STAINLESS STEEL OR PVC

NEOPRENE SEAL GASKETS AS STANDARD



MODEL EFI E-57-1
(Rynite® Flapper)
Not recommended for downward flow



MODEL EFI E-57-4
(Ball Action - Specify Ball Material)



MODEL EFI E-57-0
(Plain)



MODEL EFI E-57-2
(Drip Tube)



MODEL EFI E-57-3
(Rynite® Rotating Wheel)

BRONZE OR PVC

Plain, Ball Action, Flapper, Drip Tube or Rotating Wheel

Pressure Rating:

Furnished with Tempered glass:
200 PSI (*PVC 100 PSI with
Tempered glass @ 75°F)

Temperature Rating:

Up to 500°F depending on glass
and gasket selection

*NOTE: PVC only available in Model EFI E-57-0 or E-57-4.

PTFE gaskets standard with PVC.

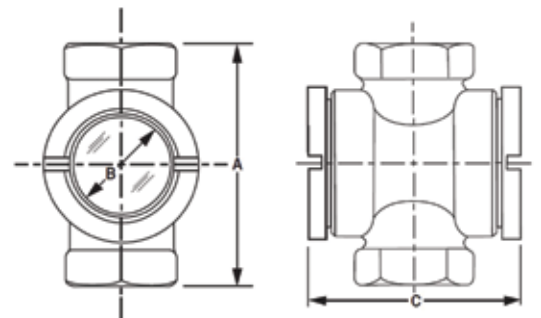
Consult Ernst Flow Industries for PVC dimensions and weights.

NPT Conn.	Dimensions in Inches			Approx. Weight (lbs.)
	A	B	C	
1/4, 3/8, 1/2	4-3/4	1-3/4	4	4
3/4	4-5/8	1-3/4	4	4
1	5-1/4	1-3/4	4	4
1-1/4, 1-1/2	4-5/8	1-3/4	4	5
2	5-1/2	1-3/4	4	7
2-1/2	6-3/4	2-3/4	5-1/4	13
3	7-3/8	2-3/4	6	18

CARBON STEEL OR 316 STAINLESS STEEL

Plain, Ball Action, Flapper, Drip Tube or Rotating Wheel

CARBON STEEL OR 316 STAINLESS STEEL				
NPT Conn.	Dimensions in Inches			Approx. Weight (lbs.)
	A	B	C	
1/4, 3/8, 1/2, 3/4, 1	4-5/8	1-3/4	4	4
1-1/4, 1-1/2, 2	5-7/16	1-3/4	5	8



Notes: For all Sight Flow Indicators and Sight Windows indicated on pages 24-34.

- Materials of construction indicated describe wetted surfaces only. Bolting, tie rods, glass retaining rings and covers may be of materials other than those indicated for the wetted surfaces. Optional materials for these parts are available. Consult Ernst Flow Industries relative to standard and optional gasket materials.
- Optional materials of construction are available...consult Ernst Flow Industries.
- Optional connection type available (i.e. socket weld, butt weld, sil-braze, etc.).
- Consult Ernst Flow Industries regarding operating temperatures for specific sight flow indicator and sight window models.