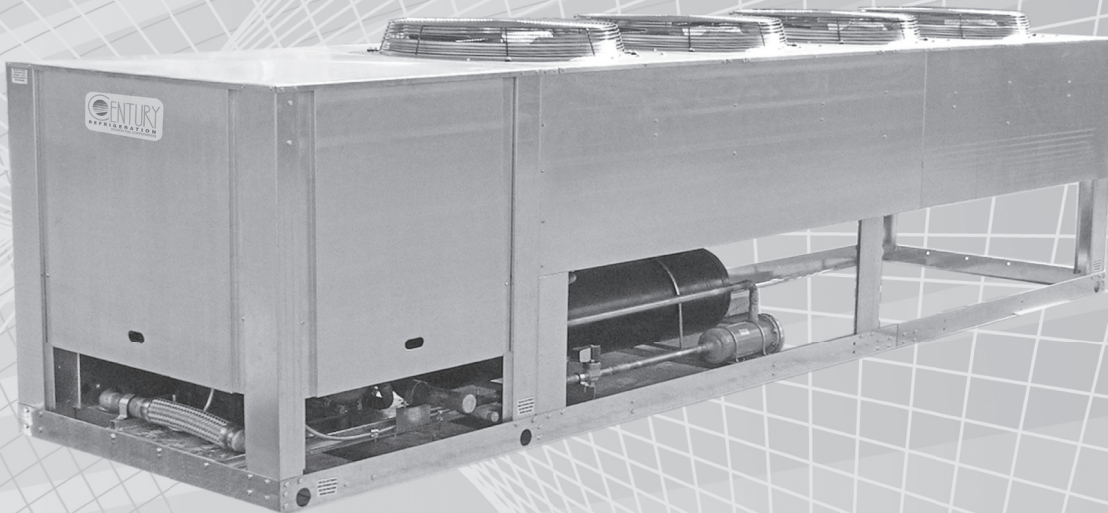


# D SERIES

Air Cooled Condensing Units - Technical Catalog

---

Featuring Copeland Compressors  
404A and 507 Refrigerants



  
**REFRIGERATION**  
DIVISION RAE CORPORATION

## Standard Features

- Direct drive condenser fans
- Fan motor contacts
- Poly-coated fan guard
- Liquid receiver with relief valve
- Receiver inlet and outlet valves
- Refrigerant charging valve
- Compressor contactors
- Crankcase heater
- Compressor service valves
- Vibration isolation under compressor
- Discharge vibrasorber
- Head cooling fans standard on low temp units
- Separate sub-cooling circuit
- Fan motor overload protection
- Removable access panels
- NEMA 3R weatherproof electrical panel
- Hinged control panel access
- Prewired controls
- High pressure safety
- Low pressure operating control
- Rigging holes
- Copeland Core Sense motor and oil protection where applicable
- Run/Pumpdown switch

## Applications

Century's "D" Series outdoor air cooled condensing units are specifically designed for commercial and industrial refrigeration duty cooling applications. They come completely pre-piped and wired with vertical air discharge. They also utilize a unique horizontal condenser and coil design and high volume condenser fans. Each unit is provided with a separate sub-cooling circuit to maximize unit performance. The "D" Series condensing unit is suitable for mounting at ground or rooftop levels.

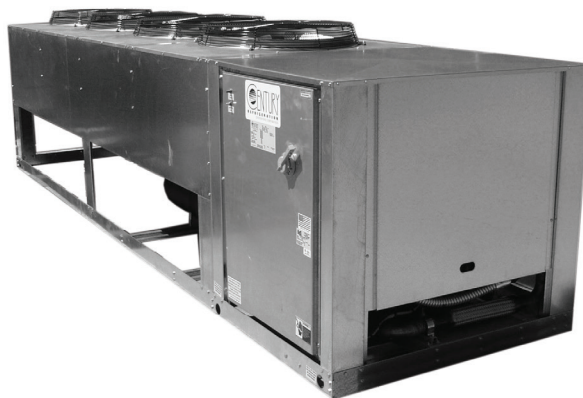
"D" Series condensing units can be applied between the operating saturated suction temperatures of -40°F and 45°F, depending on the unit selected and the refrigerant utilized. For higher or lower operating temperatures, contact your local Century Representative.

"D" Series condensing units can be matched with Century Refrigeration's FV Series, FH Series, BALV

Series, A Series medium profile unit coolers, BOC Series large profile unit coolers, PFE Blast Cooler/Freezer unit coolers, WIBR Series unit coolers, and XBOC Series unit coolers. Applications ranging from low temperature product storage, produce ripening, or medium temperature product storage can be readily supported by the "D" Series condensing units.

Each "DM" Series unit is designed to meet the demands of multiple load applications required for commercial and industrial refrigeration. The "DM" Series units bridge the gap between individual systems and large multiple compressor rack systems for the warehouse industry.

Refrigerants 404a and 507 are available to meet your product application. POE oils are utilized in units for these refrigerants.



# Available Options

- + 20°F fan cycle (ambient temperatures at or above +20°F)
- 0°F fan cycle (ambient temperatures at or above 0°F)
- A20 flood control with receivers (ambient temperatures at or above +20°F)
- B20 flood control with receivers (ambient temperatures below +20°F, positive start feature)
- VFD compatible condenser fan motors with controller mounted
- Title 24 packages
- 850 RPM fan motors and optional low sound blades
- Special high air fan blades for high altitude locations
- Liquid line solenoid, mounted or shipped loose, with or without manual lift stem
- Liquid line drier (with or without replaceable core) & sight glass
- 3 valve bypass (liquid drier)
- Hot gas discharge muffler
- Suction accumulator with or without heat exchanger
- Suction filter with or without replaceable core
- Suction vibrasorber, mounted
- Oil separator
- Oil stabilized gauges with manual shut off valves
- Control circuit transformer
- Convenience outlet (115v/15amp/with transformer)
- Unit circuit breaker with through-the-door operator
- Unit fused disconnect
- Painted cabinet
- Defrost time clock
- Fused defrost heater contactor
- Fused evaporator fan contactor
- Fused defrost circuit
- Fused evaporator fan circuit
- Unit phase failure monitor
- Hot gas bypass
- Receiver insulation & heat tape
- Compressor head cooling fan
- Cylinder unloading on most compressors
- Alarm circuit with dry contacts
- Adjustable guarantee off timer (GOT)
- Off/Pumpdown/Run switch
- Electrical door interlock
- Indicator lights
- Elapsed time meter
- Acrylic coated fin coil
- Single circuit option on dual compressor unit (includes oil separator with reservoir and individual floats)
- Electronic room thermostats mounted in unit with sensor shipped loose
- Mechanical or electronic room thermostat, shipped loose
- Contact your local Century Representative for other requested special options

# Nomenclature

## MODEL KEY

D S 05 H 4

### Compressor Type

- D -Discus (Copeland)
- B -Bitzer
- Z -Other

### Number of Compressors

- S -Single
- D -Dual
- M -Multiple

### Nominal Horsepower

### Refrigerant Type

- 4 -R404a
- 7 -R507

### Temperature Range

- H -High
- M -Medium
- L -Low

## WHEN ORDERING PLEASE SPECIFY:

- Complete Model Number
- Refrigerant
- Room Temperature
- Saturated Suction Temperature
- Electrical Characteristic
  - Unit (Voltage/Phase)
  - Control Voltage
- Accessories



# Construction

## Cabinet

The rugged, industrial grade cabinet is constructed of heavy gauge, mill galvanized steel. Easily removable top and side panels are provided for convenient component access. Rigging holes are provided in the formed, full-perimeter channel base. Compressors are mounted low in the cabinet for ease of service.

## Condensers

Coils are seamless copper tube with die stamped aluminum plate fins, galvanized steel frames and tube sheets. Coils are computer selected for refrigeration applications to provide optimum heat transfer at a minimum T.D. Units are catalog rated to operate efficiently as high as 115°F ambient. Each unit is provided with a separate, sub-cooling circuit to maximize unit performance.

Condenser fan motors are industrial duty 1140 RPM, ball bearing, weather resistant, three phase with inherent electrical protection. Condenser fan blades are of finished aluminum with a corrosion-resistant coated hub.

Coils are mounted horizontally with fans arranged for draw through, vertical discharge air flow. Each fan assembly is equipped with a sturdy poly-coated steel fan guard.

## Liquid Receiver

Receivers are selected to provide pumpdown capacity (with condenser coil) considering a nominal 100ft. equivalent line length and a matching evaporator. Receivers smaller than 6 inches are U.L. listed. All larger receivers are ASME stamped. Each receiver is equipped with inlet and outlet service valves, gauge port, and pressure relief device. Oversize receivers are available with or without, optional low ambient condenser flooding valves.

## Compressors

U.L. listed, semi-hermetic, energy efficient, disc valve compressors are applied throughout the line. Each compressor is equipped with reversible oil pump, suction and discharge service valves with gauge ports, inherent three phase overload protection, oil level sight glass, crankcase heater, spring isolator mounting, in line discharge vibrasorber and auxiliary head cooling fan and/or oil cooler (where required.)

All DM Series condensing units are provided with a PLC-type compressor control. The controller will monitor the system pressures and cycle compressors accordingly. Additionally, other control systems are available for more sophisticated applications.

## Controls

All condensing units are wired to operate on a standard pumpdown cycle. Run/ pumpdown switch is provided as standard.

All electrical control components are enclosed within a heavy-gauge weatherproof, hinged panel to provide maximum weather protection and enhance service analysis.

All units have individually numbered control conductors. Also standard are adjustable, refrigeration grade, separate high and low pressure switches (high-manual reset); oil pressure failure switch (manual reset); and an individually numbered terminal strip for field connections. Conductors and fusing are selected per N.E.C. standards. A generously-sized enclosure is provided with adequate space to accommodate a complete defrost control system, either factory mounted and wired or field provided. Notably all Century control components are selected to be readily available through refrigeration wholesalers throughout the country. O.E.M. type controls are judiciously avoided.

<b>R-404a - Low Temp</b>		<b>Model Numbers<sup>5,7</sup></b>			
		<b>DS03L4</b>	<b>DS04L4</b>	<b>DS06L4</b>	<b>DS07L4</b>
<b>Compressor Model Number</b>		2DF3F16KE	2DL3F20KE	2DA3F23KE	3DA3F28KE
<b>Quantity of Compressors</b>		1	1	1	1
<b>MCA<sup>1</sup> per circuit</b>	<b>208/230 V</b>	27.2	40.1	43.2	40.7
	<b>460 V</b>	16.1	18.9	20.0	21.5
<b>RLA per compressor</b>	<b>208/230 V</b>	16.0	26.3	28.8	26.8
	<b>460 V</b>	8.0	10.2	11.1	12.3
<b>Total Number of Condenser Fan Motors</b>		1	1	1	1
<b>Size of Motor (HP)</b>		0.5	0.5	0.5	0.5
<b>Diameter of Blade (in.)</b>		20	20	24	24
<b>Condenser Fan Motor Amps (each)</b>	<b>208/230 V</b>	2.2	2.2	2.2	2.2
	<b>460 V</b>	1.1	1.1	1.1	1.1
<b>Receiver Size per circuit (in.)</b>		6 x 28	6 x 28	6 x 36	8.625 x 36
<b>Receiver Capacity 80% Full per circuit (lbs.)<sup>2</sup></b>		20	20	28	56
<b>Unit Operating Charge per circuit (approx. lbs.)</b>	<b>Standard<sup>3</sup></b>	19	21	30	34
	<b>w/ Flood Control<sup>3</sup></b>	30	30	41	76
<b>Suction Connection per circuit - ODS (in.)<sup>8</sup></b>		1 3/8	1 3/8	1 5/8	1 5/8
<b>Liquid Line Connection per circuit - ODS (in.)</b>		5/8	5/8	5/8	5/8
<b>Unit Shipping Weight - Approximate (lbs.)</b>		774	780	1,173	1,313
<b>Unit Operating Weight - Approximate (lbs.)<sup>6</sup></b>		765	771	1,032	1,172

<b>Capacity Ratings</b>		<b>Capacity</b>	<b>KW<sup>4</sup></b>	<b>Capacity</b>	<b>KW<sup>4</sup></b>	<b>Capacity</b>	<b>KW<sup>4</sup></b>	<b>Capacity</b>	<b>KW<sup>4</sup></b>
<b>Ambient Temp.</b>	<b>Suction Temp.</b>								
<b>85° F</b>	-40° F	11,244	3.06	13,595	3.45	16,425	3.91	19,906	4.62
	-30° F	15,195	3.63	18,121	4.05	21,742	4.58	26,551	5.42
	-20° F	19,899	4.17	23,429	4.66	28,042	5.24	34,340	6.19
	-10° F	25,298	4.69	29,481	5.30	35,268	5.93	43,331	6.96
	0° F	31,391	5.22	36,170	5.99	43,416	6.65	53,445	7.78
<b>95° F</b>	-40° F	9,854	3.00	12,140	3.42	14,812	3.91	17,731	4.58
	-30° F	13,482	3.63	16,251	4.08	19,655	4.64	24,004	5.48
	-20° F	17,802	4.22	21,071	4.74	25,391	5.36	31,267	6.35
	-10° F	22,763	4.78	26,540	5.42	32,012	6.09	39,645	7.22
	0° F	28,336	5.34	32,533	6.14	39,407	6.86	49,054	8.13
<b>105° F</b>	-40° F	8,435	2.90	10,671	3.35	13,139	3.85	15,484	4.48
	-30° F	11,722	3.58	14,296	4.07	17,482	4.65	21,298	5.49
	-20° F	15,627	4.22	18,584	4.78	22,641	5.43	28,022	6.47
	-10° F	20,122	4.83	23,462	5.51	28,545	6.22	35,743	7.44
	0° F	25,140	5.43	-	-	35,178	7.05	44,344	8.45
<b>115° F</b>	-40° F	6,998	2.74	9,154	3.23	11,409	3.74	13,121	4.30
	-30° F	9,913	3.49	12,296	4.02	15,220	4.62	18,486	5.44
	-20° F	13,400	4.19	-	-	19,728	5.47	24,601	6.53
	-10° F	-	-	-	-	-	-	-	-
	0° F	-	-	-	-	-	-	-	-

1 - MCA (Minimum Circuit Ampacity) is calculated based on all concurrent loads applied to the circuit. (Largest load x 1.25 + 100% of all other loads including the control circuit.) Unit amperes not included.

2 - Based on 80% full at 90°F ambient.

3 - Based on 100 feet of equivalent refrigerant line piping. (Does not include the evaporator.)

4 - KW is for the unit.

5 - If single circuit option is selected for DD models, some of the unit details listed below will change. Consult your local Century Representative for details.

6 - Operating weight reflects standard refrigerant charge.

7 - Dual units are standard with dual electrical and refrigerant circuiting. Multiple compressor units are standard with single electrical and refrigerant circuiting

8 - Size based on mounted optional suction line trim.

"-" - Consult Local Century Representative.

<b>R-404a - Low Temp</b>		<b>Model Numbers<sup>5,7</sup></b>			
		<b>DS08L4</b>	<b>DS09L4</b>	<b>DS10L4</b>	<b>DS11L4</b>
<b>Compressor Model Number</b>		3DB3F33KE	3DF3F40KE	3DS3F46KE	4DA3F47KE
<b>Quantity of Compressors</b>		1	1	1	1
<b>MCA<sup>1</sup> per circuit</b>	<b>208/230 V</b>	45.6	55.9	61.4	66.6
	<b>460 V</b>	25.7	29.2	31.6	35.8
<b>RLA per compressor</b>	<b>208/230 V</b>	30.7	37.0	41.4	45.6
	<b>460 V</b>	15.7	17.5	19.4	22.8
<b>Total Number of Condenser Fan Motors</b>		1	1	1	1
<b>Size of Motor (HP)</b>		0.5	1	1	1
<b>Diameter of Blade (in.)</b>		24	28	28	28
<b>Condenser Fan Motor Amps (each)</b>	<b>208/230 V</b>	2.2	4.6	4.6	4.6
	<b>460 V</b>	1.1	2.3	2.3	2.3
<b>Receiver Size per circuit (in.)</b>		8.625 x 36	8.625 x 36	8.625 x 36	8.625 x 36
<b>Receiver Capacity 80% Full per circuit (lbs.)<sup>2</sup></b>		56	56	56	56
<b>Unit Operating Charge per circuit (approx. lbs.)</b>	<b>Standard<sup>3</sup></b>	37	42	44	51
	<b>w/ Flood Control<sup>3</sup></b>	76	82	82	91
<b>Suction Connection per circuit - ODS (in.)<sup>8</sup></b>		2 1/8	2 1/8	2 1/8	2 1/8
<b>Liquid Line Connection per circuit - ODS (in.)</b>		5/8	5/8	7/8	7/8
<b>Unit Shipping Weight - Approximate (lbs.)</b>		1,332	1,425	1,434	1,540
<b>Unit Operating Weight - Approximate (lbs.)<sup>6</sup></b>		1,217	1,295	1,329	1,435

<b>Capacity Ratings</b>		<b>Capacity</b>	<b>KW<sup>6</sup></b>	<b>Capacity</b>	<b>KW<sup>6</sup></b>	<b>Capacity</b>	<b>KW<sup>6</sup></b>	<b>Capacity</b>	<b>KW<sup>6</sup></b>
<b>Ambient Temp.</b>	<b>Suction Temp.</b>								
<b>85° F</b>	-40° F	23,383	5.37	28,481	6.88	32,385	7.61	33,266	7.7
	-30° F	30,786	6.32	37,514	8.01	42,430	8.93	44,466	9.2
	-20° F	39,540	7.28	48,330	9.18	54,117	10.28	57,259	10.6
	-10° F	49,618	8.28	60,842	10.44	67,457	11.70	71,637	11.9
	0° F	60,934	9.36	74,940	11.85	82,207	13.24	87,553	13.3
<b>95° F</b>	-40° F	21,339	5.41	26,003	6.95	29,566	7.66	29,560	7.59
	-30° F	28,115	6.46	34,300	8.19	38,773	9.12	40,071	9.27
	-20° F	36,158	7.50	44,249	9.47	49,522	10.58	51,950	10.84
	-10° F	45,344	8.60	55,721	10.84	61,668	12.12	65,225	12.37
	0° F	55,638	9.76	68,631	12.35	75,031	13.77	79,850	13.92
<b>105° F</b>	-40° F	19,229	5.37	23,482	6.96	26,560	7.63	25,515	7.3
	-30° F	25,327	6.53	30,980	8.32	34,938	9.22	35,331	9.2
	-20° F	32,564	7.69	39,991	9.71	44,638	10.82	46,291	11.0
	-10° F	40,882	8.87	50,405	11.19	55,573	12.47	58,402	12.7
	0° F	50,102	10.13	62,062	12.82	67,479	14.25	71,578	14.5
<b>115° F</b>	-40° F	17,058	5.27	20,866	6.89	23,427	7.50	21,227	6.89
	-30° F	22,416	6.55	27,550	8.38	30,878	9.24	30,293	9.02
	-20° F	-	-	-	-	-	-	40,215	11.02
	-10° F	-	-	-	-	-	-	-	-
	0° F	-	-	-	-	-	-	-	-

1 - MCA (Minimum Circuit Ampacity) is calculated based on all concurrent loads applied to the circuit. (Largest load x 1.25 + 100% of all other loads including the control circuit.) Unit amperges not included.

2 - Based on 80% full at 90°F ambient.

3 - Based on 100 feet of equivalent refrigerant line piping. (Does not include the evaporator.)

4 - KW is for the unit.

5 - If single circuit option is selected for DD models, some of the unit details listed below will change. Consult your local Century Representative for details.

6 - Operating weight reflects standard refrigerant charge.

7 - Dual units are standard with dual electrical and refrigerant circuiting. Multiple compressor units are standard with single electrical and refrigerant circuiting

8 - Size based on mounted optional suction line trim.

"-" - Consult Local Century Representative.

<b>R-404a - Low Temp</b>		<b>Model Numbers<sup>5,7</sup></b>			
		<b>DS15L4</b>	<b>DS22L4</b>	<b>DS27L4</b>	<b>DS30L4</b>
<b>Compressor Model Number</b>		4DHNF63KE	4DJNF76KE	6DHNF93KE	6DJNF11ME
<b>Quantity of Compressors</b>		1	1	1	1
<b>MCA<sup>1</sup> per circuit</b>	<b>208/230 V</b>	78.7	94.6	122.7	143.6
	<b>460 V</b>	41.8	49.7	63.9	73.7
<b>RLA per compressor</b>	<b>208/230 V</b>	55.4	64.3	83.1	99.8
	<b>460 V</b>	27.7	32.1	41.6	49.4
<b>Total Number of Condenser Fan Motors</b>		2	2	3	3
<b>Size of Motor (HP)</b>		0.5	1	1	1
<b>Diameter of Blade (in.)</b>		24	28	28	28
<b>Condenser Fan Motor Amps (each)</b>	<b>208/230 V</b>	2.2	4.6	4.6	4.6
	<b>460 V</b>	1.1	2.3	2.3	2.3
<b>Receiver Size per circuit (in.)</b>		8.625 x 60	8.625 x 60	8.625 x 60	10.75 x 60
<b>Receiver Capacity 80% Full per circuit (lbs.)<sup>2</sup></b>		94	94	94	144
<b>Unit Operating Charge per circuit (approx. lbs.)</b>	<b>Standard<sup>3</sup></b>	68	80	93	125
	<b>w/ Flood Control<sup>3</sup></b>	127	136	147	215
<b>Suction Connection per circuit - ODS (in.)<sup>8</sup></b>		2 1/8	2 5/8	2 5/8	2 5/8
<b>Liquid Line Connection per circuit - ODS (in.)</b>		7/8	1 1/8	1 1/8	1 1/8
<b>Unit Shipping Weight - Approximate (lbs.)</b>		1,663	1,847	2,201	2,329
<b>Unit Operating Weight - Approximate (lbs.)<sup>6</sup></b>		1,552	1,686	2,040	2,208

<b>Capacity Ratings</b>		<b>Capacity</b>	<b>KW<sup>6</sup></b>	<b>Capacity</b>	<b>KW<sup>6</sup></b>	<b>Capacity</b>	<b>KW<sup>6</sup></b>	<b>Capacity</b>	<b>KW<sup>6</sup></b>
<b>Ambient Temp.</b>	<b>Suction Temp.</b>								
<b>85° F</b>	-40° F	44,280	10.20	53,336	12.74	65,362	16.34	75,275	19.0
	-30° F	58,283	12.03	70,322	14.96	87,456	19.17	99,003	22.3
	-20° F	74,056	13.81	89,539	17.13	112,824	21.96	126,974	25.6
	-10° F	91,550	15.62	110,935	19.33	141,461	24.82	159,331	29.1
	0° F	110,592	17.50	134,310	21.62	173,431	27.85	195,529	33.0
<b>95° F</b>	-40° F	40,205	10.25	47,980	12.69	58,116	16.17	68,203	19.00
	-30° F	53,213	12.28	63,659	15.15	79,004	19.34	89,793	22.60
	-20° F	67,696	14.25	81,367	17.53	102,784	22.45	115,425	26.25
	-10° F	83,554	16.23	100,761	19.94	129,506	25.63	144,852	30.09
	0° F	100,785	18.27	121,792	22.43	159,072	28.99	177,697	34.24
<b>105° F</b>	-40° F	35,755	10.14	42,206	12.45	50,291	15.77	60,748	18.8
	-30° F	47,647	12.39	56,574	15.17	69,976	19.32	80,174	22.8
	-20° F	60,750	14.57	72,510	17.81	92,046	22.79	103,150	26.8
	-10° F	75,061	16.74	89,896	20.44	116,721	26.32	129,565	30.9
	0° F	90,187	18.97	108,637	23.13	143,722	30.03	158,834	35.4
<b>115° F</b>	-40° F	30,932	9.89	35,874	12.04	41,979	15.16	53,111	18.38
	-30° F	41,638	12.38	48,824	15.05	60,354	19.10	70,244	22.75
	-20° F	-	-	-	-	80,721	22.96	90,397	27.12
	-10° F	-	-	-	-	-	-	-	-
	0° F	-	-	-	-	-	-	-	-

- 1 - MCA (Minimum Circuit Ampacity) is calculated based on all concurrent loads applied to the circuit. (Largest load x 1.25 + 100% of all other loads including the control circuit.) Unit amperes not included.
- 2 - Based on 80% full at 90°F ambient.
- 3 - Based on 100 feet of equivalent refrigerant line piping. (Does not include the evaporator.)
- 4 - KW is for the unit.
- 5 - If single circuit option is selected for DD models, some of the unit details listed below will change. Consult your local Century Representative for details.
- 6 - Operating weight reflects standard refrigerant charge.
- 7 - Dual units are standard with dual electrical and refrigerant circuiting. Multiple compressor units are standard with single electrical and refrigerant circuiting.
- 8 - Size based on mounted optional suction line trim.
- "-" - Consult Local Century Representative.

<b>R-404a - Low Temp</b>		<b>Model Numbers<sup>5,7</sup></b>			
		<b>DD12L4</b>	<b>DD14L4</b>	<b>DD16L4</b>	<b>DD18L4</b>
<b>Compressor Model Number</b>		2DA3F23KE	3DA3F28KE	3DB3F33KE	3DF3F40KE
<b>Quantity of Compressors</b>		2	2	2	2
<b>MCA<sup>1</sup> per circuit</b>	<b>208/230 V</b>	45.4	42.9	47.8	60.5
	<b>460 V</b>	21.1	22.6	26.8	31.5
<b>RLA per compressor</b>	<b>208/230 V</b>	28.8	26.8	30.7	37.0
	<b>460 V</b>	11.1	12.3	15.7	17.5
<b>Total Number of Condenser Fan Motors</b>		2	2	2	2
<b>Size of Motor (HP)</b>		0.5	0.5	0.5	1
<b>Diameter of Blade (in.)</b>		24	24	24	28
<b>Condenser Fan Motor Amps (each)</b>	<b>208/230 V</b>	2.2	2.2	2.2	4.6
	<b>460 V</b>	1.1	1.1	1.1	2.3
<b>Receiver Size per circuit (in.)</b>		6 x 36	8.625 x 36	8.625 x 36	8.625 x 36
<b>Receiver Capacity 80% Full per circuit (lbs.)<sup>2</sup></b>		28	56	56	56
<b>Unit Operating Charge per circuit (approx. lbs.)</b>	<b>Standard<sup>3</sup></b>	30	37	34	42
	<b>w/ Flood Control<sup>3</sup></b>	40	74	74	88
<b>Suction Connection per circuit - ODS (in.)<sup>8</sup></b>		1 5/8	1 5/8	2 1/8	2 1/8
<b>Liquid Line Connection per circuit - ODS (in.)</b>		5/8	5/8	5/8	5/8
<b>Unit Shipping Weight - Approximate (lbs.)</b>		2,354	2,651	2,672	2,699
<b>Unit Operating Weight - Approximate (lbs.)<sup>6</sup></b>		2,420	2,490	2,536	2,513

<b>Capacity Ratings</b>		<b>Capacity</b>	<b>KW<sup>6</sup></b>	<b>Capacity</b>	<b>KW<sup>6</sup></b>	<b>Capacity</b>	<b>KW<sup>6</sup></b>	<b>Capacity</b>	<b>KW<sup>6</sup></b>
<b>Ambient Temp.</b>	<b>Suction Temp.</b>								
<b>85° F</b>	-40° F	32,918	7.82	39,384	9.23	46,047	10.76	56,704	13.8
	-30° F	43,572	9.15	52,461	10.85	60,404	12.71	74,693	16.0
	-20° F	56,196	10.48	67,716	12.43	77,282	14.68	96,060	18.4
	-10° F	70,749	11.84	85,181	14.04	96,480	16.77	120,818	21.0
	0° F	87,187	13.28	104,896	15.73	117,788	19.04	148,517	23.8
<b>95° F</b>	-40° F	29,694	7.81	35,108	9.15	41,972	10.81	51,795	13.9
	-30° F	39,402	9.27	47,327	10.97	55,056	12.96	68,251	16.4
	-20° F	50,901	10.71	61,573	12.74	70,406	15.12	87,955	19.0
	-10° F	64,176	12.17	77,788	14.53	87,842	17.38	110,637	21.7
	0° F	79,099	13.71	95,968	16.42	107,163	19.81	135,956	24.8
<b>105° F</b>	-40° F	26,337	7.71	30,631	8.93	37,814	10.73	46,746	13.9
	-30° F	35,060	9.30	41,933	10.97	49,539	13.09	61,595	16.6
	-20° F	45,409	10.86	55,093	12.95	63,261	15.45	79,412	19.5
	-10° F	57,332	12.44	69,968	14.95	78,837	17.90	99,834	22.4
	0° F	70,660	14.08	86,505	17.04	-	-	122,734	25.7
<b>115° F</b>	-40° F	22,882	7.49	25,922	8.57	33,478	10.50	41,549	13.8
	-30° F	30,541	9.24	36,334	10.86	43,722	13.10	54,718	16.8
	-20° F	39,589	10.94	48,266	13.07	-	-	-	-
	-10° F	-	-	-	-	-	-	-	-
	0° F	-	-	-	-	-	-	-	-

1 - MCA (Minimum Circuit Ampacity) is calculated based on all concurrent loads applied to the circuit. (Largest load x 1.25 + 100% of all other loads including the control circuit.) Unit amperges not included.

2 - Based on 80% full at 90°F ambient.

3 - Based on 100 feet of equivalent refrigerant line piping. (Does not include the evaporator.)

4 - KW is for the unit.

5 - If single circuit option is selected for DD models, some of the unit details listed below will change. Consult your local Century Representative for details.

6 - Operating weight reflects standard refrigerant charge.

7 - Dual units are standard with dual electrical and refrigerant circuiting. Multiple compressor units are standard with single electrical and refrigerant circuiting

8 - Size based on mounted optional suction line trim.

"-" - Consult Local Century Representative.



<b>R-404a - Low Temp</b>		<b>Model Numbers<sup>5,7</sup></b>			
		<b>DD20L4</b>	<b>DD22L4</b>	<b>DD30L4</b>	<b>DD44L4</b>
<b>Compressor Model Number</b>		3DS3F46KE	4DA3F47KE	4DHNF63KE	4DJNF76KE
<b>Quantity of Compressors</b>		2	2	2	2
<b>MCA<sup>1</sup> per circuit</b>	<b>208/230 V</b>	65.6	70.8	83.1	103.8
	<b>460 V</b>	33.7	37.9	44.0	54.3
<b>RLA per compressor</b>	<b>208/230 V</b>	41.4	45.6	55.4	64.3
	<b>460 V</b>	19.4	22.8	27.7	32.1
<b>Total Number of Condenser Fan Motors</b>		4	4	4	4
<b>Size of Motor (HP)</b>		0.5	0.5	0.5	1
<b>Diameter of Blade (in.)</b>		24	24	24	28
<b>Condenser Fan Motor Amps (each)</b>	<b>208/230 V</b>	2.2	2.2	2.2	4.6
	<b>460 V</b>	1.1	1.1	1.1	2.3
<b>Receiver Size per circuit (in.)</b>		8.625 x 36	8.625 x 36	8.625 x 60	8.625 x 60
<b>Receiver Capacity 80% Full per circuit (lbs.)<sup>2</sup></b>		56	56	94	94
<b>Unit Operating Charge per circuit (approx. lbs.)</b>	<b>Standard<sup>3</sup></b>	44	51	68	80
	<b>w/ Flood Control<sup>3</sup></b>	77	86	124	134
<b>Suction Connection per circuit - ODS (in.)<sup>8</sup></b>		2 1/8	2 1/8	2 1/8	2 5/8
<b>Liquid Line Connection per circuit - ODS (in.)</b>		5/8	5/8	7/8	1 1/8
<b>Unit Shipping Weight - Approximate (lbs.)</b>		2,954	3,456	3,265	3,546
<b>Unit Operating Weight - Approximate (lbs.)<sup>6</sup></b>		2,783	3,285	3,130	3,420

<b>Capacity Ratings</b>		<b>Capacity</b>	<b>KW<sup>6</sup></b>	<b>Capacity</b>	<b>KW<sup>6</sup></b>	<b>Capacity</b>	<b>KW<sup>6</sup></b>	<b>Capacity</b>	<b>KW<sup>6</sup></b>
<b>Ambient Temp.</b>	<b>Suction Temp.</b>								
<b>85° F</b>	-40° F	65,060	15.21	67,068	15.48	88,806	20.39	106,782	25.5
	-30° F	85,385	17.83	89,752	18.40	116,875	24.03	140,780	29.9
	-20° F	109,096	20.50	115,617	21.13	148,636	27.59	179,421	34.2
	-10° F	136,135	23.30	145,016	23.76	183,767	31.18	222,302	38.6
	0° F	166,115	26.35	177,576	26.41	222,246	34.92	269,165	43.2
<b>95° F</b>	-40° F	59,441	15.33	59,535	15.21	80,684	20.50	96,080	25.4
	-30° F	78,109	18.21	80,938	18.53	106,771	24.54	127,618	30.3
	-20° F	99,871	21.12	105,100	21.64	135,828	28.47	162,921	35.1
	-10° F	124,520	24.15	132,206	24.64	168,027	32.40	201,994	39.9
	0° F	151,894	27.41	162,032	27.66	202,501	36.48	244,473	44.8
<b>105° F</b>	-40° F	53,450	15.26	51,500	14.66	71,713	20.30	84,544	24.9
	-30° F	70,392	18.43	71,528	18.42	95,675	24.78	113,313	30.4
	-20° F	90,053	21.60	93,758	21.95	122,139	29.12	145,226	35.6
	-10° F	112,278	24.89	118,552	25.35	150,727	33.44	180,306	40.9
	0° F	136,749	28.39	145,686	28.76	181,389	37.88	217,918	46.2
<b>115° F</b>	-40° F	47,088	15.01	42,893	13.83	62,073	19.80	71,876	24.1
	-30° F	62,217	18.49	61,408	18.07	83,555	24.76	97,827	30.1
	-20° F	-	-	81,703	22.04	-	-	-	-
	-10° F	-	-	-	-	-	-	-	-
	0° F	-	-	-	-	-	-	-	-

- 1 - MCA (Minimum Circuit Ampacity) is calculated based on all concurrent loads applied to the circuit. (Largest load x 1.25 + 100% of all other loads including the control circuit.) amperes not included.
- 2 - Based on 80% full at 90°F ambient.
- 3 - Based on 100 feet of equivalent refrigerant line piping. (Does not include the evaporator.)
- 4 - KW is for the unit.
- 5 - If single circuit option is selected for DD models, some of the unit details listed below will change. Consult your local Century Representative for details.
- 6 - Operating weight reflects standard refrigerant charge.
- 7 - Dual units are standard with dual electrical and refrigerant circuiting. Multiple compressor units are standard with single electrical and refrigerant circuiting.
- 8 - Size based on mounted optional suction line trim.
- "-" - Consult Local Century Representative.

<b>R-404a - Low Temp</b>		<b>Model Numbers<sup>5,7</sup></b>			
		<b>DD54L4</b>	<b>DD60L4</b>	<b>DM45L4</b>	<b>DM66L4</b>
<b>Compressor Model Number</b>		6DHNF93KE	6DJNF11ME	4DHNF63KE	4DJNF76KE
<b>Quantity of Compressors</b>		2	2	3	3
<b>MCA<sup>1</sup> per circuit</b>	<b>208/230 V</b>	136.5	157.4	101.9	113.0
	<b>460 V</b>	70.8	80.6	53.4	58.9
<b>RLA per compressor</b>	<b>208/230 V</b>	83.1	99.8	55.4	64.3
	<b>460 V</b>	41.6	49.4	27.7	32.1
<b>Total Number of Condenser Fan Motors</b>		6	6	6	6
<b>Size of Motor (HP)</b>		1	1	1	1
<b>Diameter of Blade (in.)</b>		28	28	28	28
<b>Condenser Fan Motor Amps (each)</b>	<b>208/230 V</b>	4.6	4.6	4.6	4.6
	<b>460 V</b>	2.3	2.3	2.3	2.3
<b>Receiver Size per circuit (in.)</b>		8.625 x 60	10.75 x 60	14 x 72	14 x 72
<b>Receiver Capacity 80% Full per circuit (lbs.)<sup>2</sup></b>		94	144	294	294
<b>Unit Operating Charge per circuit (approx. lbs.)</b>	<b>Standard<sup>3</sup></b>	93	125	195	213
	<b>w/ Flood Control<sup>3</sup></b>	148	211	290	308
<b>Suction Connection per circuit - ODS (in.)<sup>8</sup></b>		2 5/8	2 5/8	3 1/8	3 5/8
<b>Liquid Line Connection per circuit - ODS (in.)</b>		1 1/8	1 1/8	1 3/8	1 3/8
<b>Unit Shipping Weight - Approximate (lbs.)</b>		4,044	4,847	5,165	5,371
<b>Unit Operating Weight - Approximate (lbs.)<sup>6</sup></b>		3,843	4,736	5,465	5,671

<b>Capacity Ratings</b>		<b>Capacity</b>	<b>KW<sup>6</sup></b>	<b>Capacity</b>	<b>KW<sup>6</sup></b>	<b>Capacity</b>	<b>KW<sup>6</sup></b>	<b>Capacity</b>	<b>KW<sup>6</sup></b>
<b>Ambient Temp.</b>	<b>Suction Temp.</b>								
<b>85° F</b>	-40° F	130,724	32.68	151,285	37.95	131,357	33.94	157,190	38.2
	-30° F	174,912	38.34	198,959	44.45	172,348	39.54	206,412	45.1
	-20° F	225,438	43.93	255,648	51.07	218,386	45.04	261,581	51.8
	-10° F	282,923	49.63	321,118	58.07	268,805	50.65	322,269	58.7
	0° F	346,555	55.72	394,915	65.68	323,362	56.52	387,961	65.9
<b>95° F</b>	-40° F	116,233	32.33	136,920	38.01	119,092	34.03	141,011	38.0
	-30° F	157,816	38.68	180,591	45.18	157,032	40.21	186,421	45.5
	-20° F	205,340	44.92	232,399	52.43	199,126	46.26	236,957	52.9
	-10° F	258,739	51.28	291,999	60.03	244,790	52.38	291,850	60.3
	0° F	317,813	58.01	359,112	68.24	293,502	58.75	350,436	68.1
<b>105° F</b>	-40° F	100,582	31.55	122,018	37.63	105,727	33.67	123,603	37.2
	-30° F	139,746	38.63	161,409	45.53	140,249	40.50	164,984	45.5
	-20° F	184,093	45.58	207,948	53.47	178,130	47.15	210,354	53.6
	-10° F	233,442	52.64	261,580	61.73	219,066	53.82	259,115	61.7
	0° F	287,085	60.09	321,203	70.61	-	-	-	-
<b>115° F</b>	-40° F	83,958	30.31	106,644	36.79	91,098	32.86	104,978	35.9
	-30° F	120,486	38.20	141,384	45.51	122,165	40.39	141,844	45.0
	-20° F	161,178	45.92	182,251	54.20	-	-	-	-
	-10° F	-	-	-	-	-	-	-	-
	0° F	-	-	-	-	-	-	-	-

1 - MCA (Minimum Circuit Ampacity) is calculated based on all concurrent loads applied to the circuit. (Largest load x 1.25 + 100% of all other loads including the control circuit.) Unit amperes not included.

2 - Based on 80% full at 90°F ambient.

3 - Based on 100 feet of equivalent refrigerant line piping. (Does not include the evaporator.)

4 - KW is for the unit.

5 - If single circuit option is selected for DD models, some of the unit details listed below will change. Consult your local Century Representative for details.

6 - Operating weight reflects standard refrigerant charge.

7 - Dual units are standard with dual electrical and refrigerant circuiting. Multiple compressor units are standard with single electrical and refrigerant circuiting

8 - Size based on mounted optional suction line trim.

"-" - Consult Local Century Representative.

<b>R-404a - Low Temp</b>		<b>Model Numbers<sup>5,7</sup></b>	
		<b>DM81L4</b>	<b>DM90L4</b>
<b>Compressor Model Number</b>		6DHNF93KE	6DJNF11ME
<b>Quantity of Compressors</b>		3	3
<b>MCA<sup>1</sup> per circuit</b>	<b>208/230 V</b>	136.5	157.4
	<b>460 V</b>	70.8	80.6
<b>RLA per compressor</b>	<b>208/230 V</b>	83.1	99.8
	<b>460 V</b>	41.6	49.4
<b>Total Number of Condenser Fan Motors</b>		6	6
<b>Size of Motor (HP)</b>		1	1
<b>Diameter of Blade (in.)</b>		28	28
<b>Condenser Fan Motor Amps (each)</b>	<b>208/230 V</b>	4.6	4.6
	<b>460 V</b>	2.3	2.3
<b>Receiver Size per circuit (in.)</b>		14 x 96	14 x 96
<b>Receiver Capacity 80% Full per circuit (lbs.)<sup>2</sup></b>		386	386
<b>Unit Operating Charge per circuit (approx. lbs.)</b>	<b>Standard<sup>3</sup></b>	266	317
	<b>w/ Flood Control<sup>3</sup></b>	409	507
<b>Suction Connection per circuit - ODS (in.)<sup>8</sup></b>		3 5/8	4 1/8
<b>Liquid Line Connection per circuit - ODS (in.)</b>		1 5/8	2 1/8
<b>Unit Shipping Weight - Approximate (lbs.)</b>		5,865	6,009
<b>Unit Operating Weight - Approximate (lbs.)<sup>6</sup></b>		6,165	6,409

<b>Capacity Ratings</b>		<b>Capacity</b>	<b>KW<sup>6</sup></b>	<b>Capacity</b>	<b>KW<sup>6</sup></b>
<b>Ambient Temp.</b>	<b>Suction Temp.</b>				
<b>85° F</b>	-40° F	189,412	45.62	219,822	53.73
	-30° F	252,406	54.48	286,895	63.91
	-20° F	323,709	63.38	365,366	74.43
	-10° F	403,049	72.67	454,480	85.70
	0° F	489,526	82.74	552,140	98.14
<b>95° F</b>	-40° F	167,901	44.93	198,581	53.61
	-30° F	226,836	54.76	259,624	64.75
	-20° F	293,439	64.60	330,539	76.18
	-10° F	366,719	74.83	410,976	88.32
	0° F	446,036	85.85	498,168	101.64
<b>105° F</b>	-40° F	144,762	43.59	176,902	52.85
	-30° F	199,908	54.49	230,877	65.05
	-20° F	261,181	65.36	293,997	77.49
	-10° F	328,472	76.60	365,173	90.59
	0° F	-	-	-	-
<b>115° F</b>	-40° F	120,474	41.63	154,282	51.43
	-30° F	171,299	53.67	201,243	64.81
	-20° F	-	-	-	-
	-10° F	-	-	-	-
	0° F	-	-	-	-

1 - MCA (Minimum Circuit Ampacity) is calculated based on all concurrent loads applied to the circuit. (Largest load x 1.25 + 100% of all other loads including the control circuit.) Unit amperes not included.

2 - Based on 80% full at 90°F ambient.

3 - Based on 100 feet of equivalent refrigerant line piping. (Does not include the evaporator.)

4 - KW is for the unit.

5 - If single circuit option is selected for DD models, some of the unit details listed below will change. Consult your local Century Representative for details.

6 - Operating weight reflects standard refrigerant charge.

7 - Dual units are standard with dual electrical and refrigerant circuiting. Multiple compressor units are standard with single electrical and refrigerant circuiting

8 - Size based on mounted optional suction line trim.

"-" - Consult Local Century Representative.

<b>R-404a - High Temp</b>		<b>Model Numbers<sup>5,7</sup></b>			
		<b>DS05H4</b>	<b>DS08H4</b>	<b>DS09H4</b>	<b>DS10H4</b>
<b>Compressor Model Number</b>		2DD3R63KE	2DA3R89KE	3DA3R10ME	3DB3R12ME
<b>Quantity of Compressors</b>		1	1	1	1
<b>MCA<sup>1</sup> per circuit</b>	<b>208/230 V</b>	35.1	49.6	60.9	63.9
	<b>460 V</b>	19.2	26.6	32.3	34.5
<b>RLA per compressor</b>	<b>208/230 V</b>	22.3	32.0	41.0	43.6
	<b>460 V</b>	10.5	15.4	20.0	21.8
<b>Total Number of Condenser Fan Motors</b>		1	1	1	2
<b>Size of Motor (HP)</b>		0.5	1	1	0.5
<b>Diameter of Blade (in.)</b>		24	28	28	24
<b>Condenser Fan Motor Amps (each)</b>	<b>208/230 V</b>	2.2	4.6	4.6	2.2
	<b>460 V</b>	1.1	2.3	2.3	1.1
<b>Receiver Size per circuit (in.)</b>		6 x 36	8.625 x 36	8.625 x 42	8.625 x 42
<b>Receiver Capacity 80% Full per circuit (lbs.)<sup>2</sup></b>		28	56	63	63
<b>Unit Operating Charge per circuit (approx. lbs.)</b>	<b>Standard<sup>3</sup></b>	29	37	49	61
	<b>w/ Flood Control<sup>3</sup></b>	41	81	88	96
<b>Suction Connection per circuit - ODS (in.)<sup>8</sup></b>		1 3/8	1 5/8	1 5/8	2 1/8
<b>Liquid Line Connection per circuit - ODS (in.)</b>		5/8	7/8	7/8	7/8
<b>Unit Shipping Weight - Approximate (lbs.)</b>		1,159	1,333	1,428	1,542
<b>Unit Operating Weight - Approximate (lbs.)<sup>6</sup></b>		1,018	1,218	1,298	1,421

<b>Capacity Ratings</b>		<b>Capacity</b>	<b>KW<sup>6</sup></b>	<b>Capacity</b>	<b>KW<sup>6</sup></b>	<b>Capacity</b>	<b>KW<sup>6</sup></b>	<b>Capacity</b>	<b>KW<sup>6</sup></b>
<b>Ambient Temp.</b>	<b>Suction Temp.</b>								
<b>85° F</b>	-10° F	25,914	4.05	39,579	6.25	46,462	7.36	55,513	8.7
	0° F	32,744	4.58	48,747	6.90	56,482	8.13	67,986	9.6
	10° F	40,856	5.08	59,965	7.52	68,978	8.88	83,127	10.5
	20° F	49,869	5.56	72,875	8.14	83,207	9.61	100,104	11.4
	25° F	54,706	5.80	79,819	8.45	90,987	9.98	109,309	11.8
	30° F	59,806	6.04	87,126	8.77	99,278	10.35	119,077	12.3
	45° F	76,104	6.78	111,081	9.79	126,169	11.53	150,601	13.7
<b>95° F</b>	-10° F	23,854	4.12	36,772	6.38	44,090	7.59	52,066	9.0
	0° F	29,787	4.72	44,723	7.13	52,443	8.47	62,823	10.0
	10° F	37,001	5.27	54,619	7.83	63,245	9.30	76,142	11.0
	20° F	45,106	5.81	66,253	8.52	75,859	10.10	91,346	12.0
	25° F	49,455	6.07	72,539	8.87	82,777	10.51	99,612	12.5
	30° F	53,980	6.33	79,070	9.23	90,072	10.92	108,283	13.0
	45° F	68,500	7.14	100,655	10.34	114,070	12.19	136,422	14.5
<b>105° F</b>	-10° F	21,854	4.13	34,117	6.44	42,069	7.73	48,822	9.2
	0° F	26,861	4.80	40,734	7.29	48,595	8.73	57,676	10.3
	10° F	33,036	5.43	49,193	8.09	57,507	9.66	69,017	11.4
	20° F	40,141	6.02	59,394	8.86	68,349	10.55	82,345	12.5
	25° F	43,965	6.31	64,971	9.25	74,325	10.99	89,487	13.1
	30° F	47,943	6.60	70,759	9.64	80,655	11.44	97,104	13.6
	45° F	-	-	89,696	10.88	-	-	121,855	15.3
<b>115° F</b>	-10° F	19,932	4.07	31,640	6.43	40,438	7.78	45,747	9.2
	0° F	23,917	4.83	36,816	7.39	44,950	8.91	52,627	10.6
	10° F	29,013	5.53	43,781	8.29	51,848	9.95	61,805	11.8
	20° F	35,078	6.19	52,310	9.16	-	-	73,058	13.0
	25° F	-	-	57,199	9.59	-	-	-	-
	30° F	-	-	-	-	-	-	-	-
	45° F	-	-	-	-	-	-	-	-

1 - MCA (Minimum Circuit Ampacity) is calculated based on all concurrent loads applied to the circuit. (Largest load x 1.25 + 100% of all other loads including the control circuit.) Unit cooler amperes not included.

2 - Based on 80% full at 90°F ambient.

3 - Based on 100 feet of equivalent refrigerant line piping. (Does not include the evaporator.)

4 - KW is for the unit.

5 - If single circuit option is selected for DD models, some of the unit details listed below will change. Consult your local Century Representative for details.

6 - Operating weight reflects standard refrigerant charge.

7 - Dual units are standard with dual electrical and refrigerant circuiting. Multiple compressor units are standard with single electrical and refrigerant circuiting

8 - Size based on mounted optional suction line trim.

"-" - Consult Local Century Representative.

<b>R-404a - High Temp</b>		<b>Model Numbers<sup>5,7</sup></b>			
		<b>DS12H4</b>	<b>DS15H4</b>	<b>DS20H4</b>	<b>DS25H4</b>
<b>Compressor Model Number</b>		3DF3R15ME	3DS3R17ME	4DA3R18ME	4DHNR22ME
<b>Quantity of Compressors</b>		1	1	1	1
<b>MCA<sup>1</sup> per circuit</b>	<b>208/230 V</b>	84.0	91.5	92.7	124.7
	<b>460 V</b>	44.5	48.2	48.9	64.9
<b>RLA per compressor</b>	<b>208/230 V</b>	55.8	61.8	62.8	84.7
	<b>460 V</b>	27.9	30.9	31.4	42.4
<b>Total Number of Condenser Fan Motors</b>		2	2	2	3
<b>Size of Motor (HP)</b>		1	1	1	1
<b>Diameter of Blade (in.)</b>		28	28	28	28
<b>Condenser Fan Motor Amps (each)</b>	<b>208/230 V</b>	4.6	4.6	4.6	4.6
	<b>460 V</b>	2.3	2.3	2.3	2.3
<b>Receiver Size per circuit (in.)</b>		8.625 x 60	8.625 x 60	8.625 x 60	8.625 x 60
<b>Receiver Capacity 80% Full per circuit (lbs.)<sup>2</sup></b>		94	94	94	94
<b>Unit Operating Charge per circuit (approx. lbs.)</b>	<b>Standard<sup>3</sup></b>	66	72	75	88
	<b>w/ Flood Control<sup>3</sup></b>	132	132	133	133
<b>Suction Connection per circuit - ODS (in.)<sup>8</sup></b>		2 1/8	2 1/8	2 1/8	2 1/8
<b>Liquid Line Connection per circuit - ODS (in.)</b>		1 1/8	1 1/8	1 1/8	1 1/8
<b>Unit Shipping Weight - Approximate (lbs.)</b>		1,745	1,757	1,850	2,118
<b>Unit Operating Weight - Approximate (lbs.)<sup>6</sup></b>		1,614	1,626	1,719	1,957

<b>Capacity Ratings</b>		<b>Capacity</b>	<b>KW<sup>6</sup></b>	<b>Capacity</b>	<b>KW<sup>6</sup></b>	<b>Capacity</b>	<b>KW<sup>6</sup></b>	<b>Capacity</b>	<b>KW<sup>6</sup></b>
<b>Ambient Temp.</b>	<b>Suction Temp.</b>								
<b>85° F</b>	-10° F	69,361	11.57	76,364	12.64	77,877	12.86	101,044	17.3
	0° F	84,821	12.70	93,067	13.93	97,099	14.31	125,621	19.0
	10° F	103,827	13.82	113,493	15.21	119,854	15.66	154,440	20.7
	20° F	125,707	14.97	136,513	16.53	144,710	16.97	185,942	22.4
	25° F	137,653	15.55	148,938	17.22	158,331	17.62	202,927	23.3
	30° F	150,103	16.16	162,121	17.93	172,323	18.28	220,593	24.2
	45° F	190,918	18.16	205,002	20.25	217,377	20.32	277,241	27.0
<b>95° F</b>	-10° F	65,143	11.91	71,746	13.00	70,576	13.00	92,909	17.7
	0° F	78,395	13.19	85,958	14.45	87,533	14.64	114,821	19.7
	10° F	95,017	14.44	103,868	15.88	107,759	16.17	140,597	21.6
	20° F	114,697	15.70	124,235	17.33	130,378	17.64	169,197	23.4
	25° F	125,329	16.35	135,471	18.07	142,356	18.37	184,397	24.4
	30° F	136,383	17.02	147,103	18.85	154,980	19.10	200,148	25.4
	45° F	172,927	19.18	185,234	21.34	195,259	21.35	250,859	28.5
<b>105° F</b>	-10° F	61,246	12.15	67,485	13.25	63,238	12.97	84,616	18.0
	0° F	72,073	13.59	79,016	14.88	77,740	14.83	103,669	20.2
	10° F	86,173	14.98	94,016	16.46	95,333	16.56	126,202	22.3
	20° F	103,246	16.38	111,830	18.05	115,344	18.22	151,638	24.4
	25° F	112,520	17.10	121,482	18.87	125,949	19.03	164,936	25.4
	30° F	122,396	17.82	131,623	19.71	136,926	19.84	178,913	26.5
	45° F	154,242	20.17	-	-	172,507	22.32	223,490	29.8
<b>115° F</b>	-10° F	57,689	12.27	63,603	13.36	55,988	12.77	76,090	18.1
	0° F	65,860	13.89	72,194	15.19	67,893	14.88	92,054	20.5
	10° F	77,219	15.45	84,125	16.96	82,477	16.83	111,108	22.9
	20° F	91,358	17.00	-	-	99,710	18.68	133,050	25.2
	25° F	99,459	17.78	-	-	-	-	-	-
	30° F	-	-	-	-	-	-	-	-
	45° F	-	-	-	-	-	-	-	-

1 - MCA (Minimum Circuit Ampacity) is calculated based on all concurrent loads applied to the circuit. (Largest load x 1.25 + 100% of all other loads including the control circuit.) Unit cooler amperes not included.

2 - Based on 80% full at 90°F ambient.

3 - Based on 100 feet of equivalent refrigerant line piping. (Does not include the evaporator.)

4 - KW is for the unit.

5 - If single circuit option is selected for DD models, some of the unit details listed below will change. Consult your local Century Representative for details.

6 - Operating weight reflects standard refrigerant charge.

7 - Dual units are standard with dual electrical and refrigerant circuiting. Multiple compressor units are standard with single electrical and refrigerant circuiting

8 - Size based on mounted optional suction line trim.

"-" - Consult Local Century Representative.



<b>R-404a - High Temp</b>	<b>Model Numbers<sup>5,7</sup></b>			
	<b>DS30H4</b>	<b>DS35H4</b>	<b>DS40H4</b>	<b>DD10H4</b>
Compressor Model Number	4DJNR28ME	6DHNR35ME	6DJNR40ME	2DD3R63KE
Quantity of Compressors	1	1	1	2
MCA <sup>1</sup> per circuit	208/230 V	146.7	179.8	247.0
	460 V	75.9	92.5	208.7
RLA per compressor	208/230 V	102.3	125.1	178.9
	460 V	51.2	62.6	155.6
Total Number of Condenser Fan Motors	3	4	4	2
Size of Motor (HP)	1	1	1	0.5
Diameter of Blade (in.)	28	28	28	24
Condenser Fan Motor Amps (each)	208/230 V	4.6	4.6	4.6
	460 V	2.3	2.3	2.3
Receiver Size per circuit (in.)	10.75 x 60	10.75 x 60	12.75 x 60	6 x 36
Receiver Capacity 80% Full per circuit (lbs.) <sup>2</sup>	144	144	191	28
Unit Operating Charge per circuit (approx. lbs.)	Standard <sup>3</sup>	120	133	154
	w/ Flood Control <sup>3</sup>	217	212	254
Suction Connection per circuit - ODS (in.) <sup>8</sup>	2 5/8	2 5/8	2 5/8	1 3/8
Liquid Line Connection per circuit - ODS (in.)	1 3/8	1 3/8	1 3/8	5/8
Unit Shipping Weight - Approximate (lbs.)	2,297	2,584	2,776	2,425
Unit Operating Weight - Approximate (lbs.) <sup>6</sup>	2,176	2,402	2,644	2,239

<b>Capacity Ratings</b>		Capacity	KW <sup>6</sup>	Capacity	KW <sup>6</sup>	Capacity	KW <sup>6</sup>	Capacity	KW <sup>6</sup>
Ambient Temp.	Suction Temp.								
<b>85° F</b>	-10° F	120,242	19.79	153,062	19.79	182,879	30.10	51,922	8.1
	0° F	148,970	22.18	187,558	22.18	223,497	33.52	65,628	9.1
	10° F	183,012	24.52	228,429	24.52	270,124	36.93	82,049	10.1
	20° F	220,669	26.88	274,574	26.88	322,027	40.45	100,280	11.1
	25° F	240,980	28.09	299,788	28.09	349,901	42.29	110,021	11.6
	30° F	262,418	29.31	326,171	29.31	379,268	44.18	120,297	12.0
	45° F	330,655	33.25	411,022	33.25	471,927	50.50	153,346	13.5
<b>95° F</b>	-10° F	111,168	20.28	141,364	20.28	168,129	30.84	47,801	8.2
	0° F	136,225	22.93	171,195	22.93	204,175	34.66	59,769	9.4
	10° F	166,477	25.50	207,745	25.50	246,120	38.46	74,277	10.5
	20° F	200,191	28.06	248,938	28.06	292,869	42.32	90,663	11.6
	25° F	218,447	29.35	271,333	29.35	317,747	44.35	99,421	12.1
	30° F	237,448	30.67	294,720	30.67	343,922	46.42	108,677	12.6
	45° F	298,151	34.86	370,905	34.86	427,235	53.21	138,198	14.2
<b>105° F</b>	-10° F	102,257	20.54	130,282	20.54	153,274	31.28	43,800	8.3
	0° F	123,313	23.48	155,203	23.48	184,363	35.56	53,874	9.6
	10° F	149,293	26.30	186,657	26.30	221,651	39.77	66,365	10.8
	20° F	179,030	29.09	222,431	29.09	262,604	44.04	80,871	12.0
	25° F	194,813	30.50	242,126	30.50	284,691	46.24	88,597	12.6
	30° F	211,507	31.91	262,717	31.91	307,520	48.51	96,639	13.2
	45° F	-	-	-	-	-	-	-	-
<b>115° F</b>	-10° F	93,584	20.54	119,756	20.54	138,432	31.42	39,925	8.1
	0° F	110,451	23.82	139,186	23.82	164,212	36.20	47,993	9.7
	10° F	131,765	26.93	164,908	26.93	195,574	40.88	58,258	11.1
	20° F	-	-	-	-	-	-	70,580	12.4
	25° F	-	-	-	-	-	-	-	-
	30° F	-	-	-	-	-	-	-	-
	45° F	-	-	-	-	-	-	-	-

1 - MCA (Minimum Circuit Ampacity) is calculated based on all concurrent loads applied to the circuit. (Largest load x 1.25 + 100% of all other loads including the control circuit.) Unit cooler amperes not included.

2 - Based on 80% full at 90°F ambient.

3 - Based on 100 feet of equivalent refrigerant line piping. (Does not include the evaporator.)

4 - KW is for the unit.

5 - If single circuit option is selected for DD models, some of the unit details listed below will change. Consult your local Century Representative for details.

6 - Operating weight reflects standard refrigerant charge.

7 - Dual units are standard with dual electrical and refrigerant circuiting. Multiple compressor units are standard with single electrical and refrigerant circuiting

8 - Size based on mounted optional suction line trim.

"-" - Consult Local Century Representative.

<b>R-404a - High Temp</b>		<b>Model Numbers<sup>5,7</sup></b>			
		<b>DD16H4</b>	<b>DD18H4</b>	<b>DD20H4</b>	<b>DD24H4</b>
<b>Compressor Model Number</b>		2DA3R89KE	3DA3R10ME	3DB3R12ME	3DF3R15ME
<b>Quantity of Compressors</b>		2	2	2	2
<b>MCA<sup>1</sup> per circuit</b>	<b>208/230 V</b>	54.2	65.1	68.3	93.2
	<b>460 V</b>	28.9	34.4	36.7	49.1
<b>RLA per compressor</b>	<b>208/230 V</b>	32.0	41.0	43.6	55.8
	<b>460 V</b>	15.4	20.0	21.8	27.9
<b>Total Number of Condenser Fan Motors</b>		2	4	4	4
<b>Size of Motor (HP)</b>		1	0.5	0.5	1
<b>Diameter of Blade (in.)</b>		28	24	24	28
<b>Condenser Fan Motor Amps (each)</b>	<b>208/230 V</b>	4.6	2.2	2.2	4.6
	<b>460 V</b>	2.3	1.1	1.1	2.3
<b>Receiver Size per circuit (in.)</b>		8.625 x 36	8.625 x 42	8.625 x 42	8.625 x 60
<b>Receiver Capacity 80% Full per circuit (lbs.)<sup>2</sup></b>		56	63	63	94
<b>Unit Operating Charge per circuit (approx. lbs.)</b>	<b>Standard<sup>3</sup></b>	37	49	61	66
	<b>w/ Flood Control<sup>3</sup></b>	81	84	93	134
<b>Suction Connection per circuit - ODS (in.)<sup>8</sup></b>		1 5/8	1 5/8	2 1/8	2 1/8
<b>Liquid Line Connection per circuit - ODS (in.)</b>		7/8	7/8	7/8	1 1/8
<b>Unit Shipping Weight - Approximate (lbs.)</b>		2,604	2,944	3,320	3,458
<b>Unit Operating Weight - Approximate (lbs.)<sup>6</sup></b>		2,468	2,758	3,149	3,332

<b>Capacity Ratings</b>		<b>Capacity</b>	<b>KW<sup>6</sup></b>	<b>Capacity</b>	<b>KW<sup>6</sup></b>	<b>Capacity</b>	<b>KW<sup>6</sup></b>	<b>Capacity</b>	<b>KW<sup>6</sup></b>
<b>Ambient Temp.</b>	<b>Suction Temp.</b>								
<b>85° F</b>	-10° F	78,834	12.52	93,132	14.67	111,391	17.27	138,610	23.1
	0° F	96,875	13.86	113,438	16.20	136,648	19.10	169,359	25.4
	10° F	118,988	15.13	138,846	17.67	167,442	20.84	207,243	27.7
	20° F	143,842	16.40	168,065	19.10	202,519	22.56	250,683	30.0
	25° F	157,332	17.05	184,041	19.82	221,662	23.42	274,206	31.2
	30° F	171,676	17.70	200,894	20.55	241,575	24.30	298,970	32.4
<b>95° F</b>	45° F	217,872	19.81	256,218	22.84	306,967	27.07	379,693	36.4
	-10° F	73,234	12.78	88,321	15.16	104,482	17.88	130,183	23.8
	0° F	88,877	14.29	105,287	16.90	126,341	19.94	156,504	26.4
	10° F	108,247	15.73	127,328	18.52	153,430	21.89	189,604	28.9
	20° F	130,685	17.15	153,235	20.11	185,093	23.80	228,640	31.4
	25° F	142,854	17.86	167,487	20.90	201,949	24.76	249,515	32.8
<b>105° F</b>	30° F	155,644	18.58	182,563	21.69	219,894	25.72	271,800	34.1
	45° F	197,067	20.90	231,885	24.18	278,564	28.72	344,052	38.5
	-10° F	67,976	12.89	84,239	15.46	97,934	18.28	122,399	24.3
	0° F	80,954	14.60	97,575	17.43	116,067	20.61	143,857	27.2
	10° F	97,534	16.22	115,776	19.26	139,247	22.80	171,896	30.0
	20° F	117,231	17.81	138,249	21.01	166,979	24.92	205,859	32.8
<b>115° F</b>	25° F	127,985	18.60	150,442	21.89	181,820	25.97	224,149	34.2
	30° F	139,114	19.40	163,586	22.76	197,695	27.02	243,447	35.7
	45° F	175,492	21.94	206,765	25.44	248,983	30.30	306,590	40.4
	-10° F	63,039	12.85	80,932	15.56	91,806	18.47	115,296	24.5
	0° F	73,107	14.79	90,266	17.80	105,908	21.10	131,525	27.8
	10° F	86,669	16.62	104,476	19.85	124,766	23.55	153,965	30.9
<b>115° F</b>	20° F	103,248	18.39	122,805	21.81	147,925	25.91	182,267	34.0
	25° F	-	-	-	-	-	-	-	-
	30° F	-	-	-	-	-	-	-	-
	45° F	-	-	-	-	-	-	-	-

1 - MCA (Minimum Circuit Ampacity) is calculated based on all concurrent loads applied to the circuit. (Largest load x 1.25 + 100% of all other loads including the control circuit.) Unit cooler amperes not included.

2 - Based on 80% full at 90°F ambient.

3 - Based on 100 feet of equivalent refrigerant line piping. (Does not include the evaporator.)

4 - KW is for the unit.

5 - If single circuit option is selected for DD models, some of the unit details listed below will change. Consult your local Century Representative for details.

6 - Operating weight reflects standard refrigerant charge.

7 - Dual units are standard with dual electrical and refrigerant circuiting. Multiple compressor units are standard with single electrical and refrigerant circuiting

8 - Size based on mounted optional suction line trim.

"-" - Consult Local Century Representative.

<b>R-404a - High Temp</b>		<b>Model Numbers<sup>5,7</sup></b>			
		<b>DD30H4</b>	<b>DD40H4</b>	<b>DD50H4</b>	<b>DD60H4</b>
<b>Compressor Model Number</b>		3DS3R17ME	4DA3R18ME	4DHN22ME	4DJNR28ME
<b>Quantity of Compressors</b>		2	2	2	2
<b>MCA<sup>1</sup> per circuit</b>	<b>208/230 V</b>	100.7	101.9	138.5	160.5
	<b>460 V</b>	52.8	53.5	71.8	82.8
<b>RLA per compressor</b>	<b>208/230 V</b>	61.8	62.8	84.7	102.3
	<b>460 V</b>	30.9	31.4	42.4	51.2
<b>Total Number of Condenser Fan Motors</b>		4	4	6	6
<b>Size of Motor (HP)</b>		1	1	1	1
<b>Diameter of Blade (in.)</b>		28	28	28	28
<b>Condenser Fan Motor Amps (each)</b>	<b>208/230 V</b>	4.6	4.6	4.6	4.6
	<b>460 V</b>	2.3	2.3	2.3	2.3
<b>Receiver Size per circuit (in.)</b>		8.625 x 60	8.625 x 60	8.625 x 60	10.75 x 60
<b>Receiver Capacity 80% Full per circuit (lbs.)<sup>2</sup></b>		94	94	94	144
<b>Unit Operating Charge per circuit (approx. lbs.)</b>	<b>Standard<sup>3</sup></b>	72	75	88	120
	<b>w/ Flood Control<sup>3</sup></b>	134	132	161	211
<b>Suction Connection per circuit - ODS (in.)<sup>8</sup></b>		2 1/8	2 1/8	2 1/8	2 5/8
<b>Liquid Line Connection per circuit - ODS (in.)</b>		1 1/8	1 1/8	1 1/8	1 3/8
<b>Unit Shipping Weight - Approximate (lbs.)</b>		3,322	3,576	4,491	4,768
<b>Unit Operating Weight - Approximate (lbs.)<sup>6</sup></b>		3,196	3,420	4,290	4,657

<b>Capacity Ratings</b>		<b>Capacity</b>	<b>KW<sup>6</sup></b>	<b>Capacity</b>	<b>KW<sup>6</sup></b>	<b>Capacity</b>	<b>KW<sup>6</sup></b>	<b>Capacity</b>	<b>KW<sup>6</sup></b>
<b>Ambient Temp.</b>	<b>Suction Temp.</b>								
<b>85° F</b>	-10° F	152,789	25.26	155,518	25.74	202,444	34.53	241,280	39.5
	0° F	186,343	27.84	193,880	28.64	251,898	37.98	299,319	44.2
	10° F	227,399	30.39	239,182	31.35	309,969	41.34	368,801	48.9
	20° F	273,568	33.01	288,760	33.98	373,729	44.72	445,471	53.5
	25° F	298,797	34.38	315,928	35.27	407,915	46.45	487,123	55.9
	30° F	325,279	35.79	343,832	36.59	443,945	48.19	530,616	58.3
	45° F	410,968	40.44	433,649	40.69	558,888	53.84	670,880	66.0
<b>95° F</b>	-10° F	143,549	26.00	141,030	26.00	186,201	35.42	223,140	40.5
	0° F	172,128	28.89	174,730	29.29	230,359	39.29	273,900	45.8
	10° F	208,057	31.72	215,075	32.36	282,153	43.04	335,277	50.8
	20° F	249,310	34.60	260,065	35.31	340,351	46.77	404,704	55.9
	25° F	271,580	36.10	283,940	36.78	370,985	48.67	441,767	58.4
	30° F	295,288	37.63	309,101	38.23	403,233	50.59	480,974	61.0
	45° F	371,480	42.63	389,351	42.76	505,741	56.73	606,404	69.2
<b>105° F</b>	-10° F	135,021	26.49	126,348	25.93	169,641	35.97	205,323	41.1
	0° F	158,246	29.74	155,302	29.67	207,923	40.32	248,149	46.9
	10° F	188,369	32.90	190,190	33.14	253,455	44.48	300,760	52.5
	20° F	224,240	36.07	230,326	36.44	305,350	48.61	362,077	58.0
	25° F	243,626	37.70	251,088	38.08	332,199	50.70	394,739	60.8
	30° F	263,998	39.38	273,401	39.70	360,427	52.82	428,766	63.6
	45° F	330,523	44.77	343,167	44.72	450,544	59.48	538,343	72.4
<b>115° F</b>	-10° F	127,296	26.72	111,845	25.53	152,617	36.16	187,846	41.1
	0° F	144,603	30.38	135,598	29.76	184,742	41.04	222,269	47.6
	10° F	168,603	33.90	164,699	33.67	223,362	45.69	265,848	53.8
	20° F	198,607	37.40	198,757	37.39	267,601	50.26	317,625	59.8
	25° F	-	-	-	-	-	-	-	-
	30° F	-	-	-	-	-	-	-	-
	45° F	-	-	-	-	-	-	-	-

1 - MCA (Minimum Circuit Ampacity) is calculated based on all concurrent loads applied to the circuit. (Largest load x 1.25 + 100% of all other loads including the control circuit.) Unit cooler amperages not included.

2 - Based on 80% full at 90°F ambient.

3 - Based on 100 feet of equivalent refrigerant line piping. (Does not include the evaporator.)

4 - KW is for the unit.

5 - If single circuit option is selected for DD models, some of the unit details listed below will change. Consult your local Century Representative for details.

6 - Operating weight reflects standard refrigerant charge.

7 - Dual units are standard with dual electrical and refrigerant circuiting. Multiple compressor units are standard with single electrical and refrigerant circuiting

8 - Size based on mounted optional suction line trim.

"-" - Consult Local Century Representative.

<b>R-404a - High Temp</b>		<b>Model Numbers<sup>5,7</sup></b>			
		<b>DD70H4</b>	<b>DD80H4</b>	<b>DM45H4</b>	<b>DM60H4</b>
<b>Compressor Model Number</b>		6DHNR35ME	6DJNR40ME	3DS3R17ME	4DA3R18ME
<b>Quantity of Compressors</b>		2	2	3	3
<b>MCA<sup>1</sup> per circuit</b>	<b>208/230 V</b>	189.0	236.3	109.9	111.1
	<b>460 V</b>	97.1	120.7	57.4	58.1
<b>RLA per compressor</b>	<b>208/230 V</b>	125.1	155.6	61.8	62.8
	<b>460 V</b>	62.6	77.8	30.9	31.4
<b>Total Number of Condenser Fan Motors</b>		6	8	6	6
<b>Size of Motor (HP)</b>		1	1	1	1
<b>Diameter of Blade (in.)</b>		28	28	28	28
<b>Condenser Fan Motor Amps (each)</b>	<b>208/230 V</b>	4.6	4.6	4.6	4.6
	<b>460 V</b>	2.3	2.3	2.3	2.3
<b>Receiver Size per circuit (in.)</b>		10.75 x 60	12.75 x 60	14 x 72	14 x 72
<b>Receiver Capacity 80% Full per circuit (lbs.)<sup>2</sup></b>		144	191	294	294
<b>Unit Operating Charge per circuit (approx. lbs.)</b>	<b>Standard<sup>3</sup></b>	133	154	304	310
	<b>w/ Flood Control<sup>3</sup></b>	236	236	447	453
<b>Suction Connection per circuit - ODS (in.)<sup>8</sup></b>		2 5/8	2 5/8	3 1/8	3 1/8
<b>Liquid Line Connection per circuit - ODS (in.)</b>		1 3/8	1 3/8	2 1/8	2 1/8
<b>Unit Shipping Weight - Approximate (lbs.)</b>		4,966	5,518	5,123	5,463
<b>Unit Operating Weight - Approximate (lbs.)<sup>6</sup></b>		4,955	5,507	5,423	5,763

<b>Capacity Ratings</b>		<b>Capacity</b>	<b>KW<sup>6</sup></b>	<b>Capacity</b>	<b>KW<sup>6</sup></b>	<b>Capacity</b>	<b>KW<sup>6</sup></b>	<b>Capacity</b>	<b>KW<sup>6</sup></b>
<b>Ambient Temp.</b>	<b>Suction Temp.</b>								
<b>85° F</b>	-10° F	305,948	48.23	363,086	60.42	229,830	37.80	233,982	38.6
	0° F	374,857	54.23	442,827	67.40	280,771	41.61	292,008	42.9
	10° F	456,857	59.92	531,858	74.43	343,319	45.38	360,882	46.9
	20° F	549,149	65.55	632,221	81.70	414,818	49.21	436,595	50.8
	25° F	598,919	68.41	685,879	85.51	453,247	51.23	477,188	52.7
	30° F	651,609	71.29	742,243	89.44	494,118	53.29	520,017	54.7
	45° F	821,038	80.37	918,342	102.59	627,237	60.03	657,084	60.7
<b>95° F</b>	-10° F	282,729	49.31	333,703	61.81	215,917	38.93	212,094	39.0
	0° F	342,389	56.04	404,128	69.61	259,462	43.21	263,356	43.9
	10° F	415,020	62.42	484,590	77.35	314,244	47.40	324,274	48.5
	20° F	497,269	68.62	574,006	85.35	378,160	51.64	393,203	52.8
	25° F	541,983	71.74	622,383	89.48	412,619	53.83	429,377	55.0
	30° F	589,439	74.85	671,514	93.82	448,862	56.09	468,151	57.2
	45° F	740,756	84.68	828,679	107.92	567,046	63.42	590,141	63.9
<b>105° F</b>	-10° F	260,564	49.74	304,128	62.63	203,069	39.70	190,282	38.9
	0° F	310,134	57.31	364,574	71.32	238,491	44.52	234,023	44.5
	10° F	372,925	64.41	435,327	79.91	284,817	49.18	287,069	49.6
	20° F	444,861	71.27	513,617	88.68	340,264	53.89	348,204	54.6
	25° F	484,251	74.67	555,589	93.21	370,398	56.28	380,277	57.0
	30° F	525,433	78.10	598,739	97.90	402,185	58.74	413,487	59.4
	45° F	-	-	-	-	505,311	66.67	521,204	66.8
<b>115° F</b>	-10° F	239,513	49.48	274,596	62.83	191,349	40.08	168,358	38.3
	0° F	278,373	57.99	324,378	72.53	218,036	45.50	204,247	44.6
	10° F	329,817	65.91	-	-	255,011	50.72	248,578	50.5
	20° F	-	-	-	-	301,301	55.91	300,619	56.0
	25° F	-	-	-	-	-	-	-	-
	30° F	-	-	-	-	-	-	-	-
	45° F	-	-	-	-	-	-	-	-

1 - MCA (Minimum Circuit Ampacity) is calculated based on all concurrent loads applied to the circuit. (Largest load x 1.25 + 100% of all other loads including the control circuit.) Unit cooler amperes not included.

2 - Based on 80% full at 90°F ambient.

3 - Based on 100 feet of equivalent refrigerant line piping. (Does not include the evaporator.)

4 - KW is for the unit.

5 - If single circuit option is selected for DD models, some of the unit details listed below will change. Consult your local Century Representative for details.

6 - Operating weight reflects standard refrigerant charge.

7 - Dual units are standard with dual electrical and refrigerant circuiting. Multiple compressor units are standard with single electrical and refrigerant circuiting

8 - Size based on mounted optional suction line trim.

"-" - Consult Local Century Representative.

<b>R-404a - High Temp</b>		<b>Model Numbers<sup>5,7</sup></b>			
		<b>DM75H4</b>	<b>DM90H4</b>	<b>DM105H4</b>	<b>DM120H4</b>
<b>Compressor Model Number</b>		4DHNR22ME	4DJNR28ME	6DHNR35ME	6DJNR40ME
<b>Quantity of Compressors</b>		3	3	3	3
<b>MCA<sup>1</sup> per circuit</b>	<b>208/230 V</b>	147.7	169.7	198.2	254.7
	<b>460 V</b>	76.4	87.4	101.7	129.9
<b>RLA per compressor</b>	<b>208/230 V</b>	84.7	102.3	125.1	155.6
	<b>460 V</b>	42.4	51.2	62.6	77.8
<b>Total Number of Condenser Fan Motors</b>		8	8	8	12
<b>Size of Motor (HP)</b>		1	1	1	1
<b>Diameter of Blade (in.)</b>		28	28	28	28
<b>Condenser Fan Motor Amps (each)</b>	<b>208/230 V</b>	4.6	4.6	4.6	4.6
	<b>460 V</b>	2.3	2.3	2.3	2.3
<b>Receiver Size per circuit (in.)</b>		14 x 72	14 x 96	16 x 96	16 x 96
<b>Receiver Capacity 80% Full per circuit (lbs.)<sup>2</sup></b>		294	395	522	522
<b>Unit Operating Charge per circuit (approx. lbs.)</b>	<b>Standard<sup>3</sup></b>	381	443	616	690
	<b>w/ Flood Control<sup>3</sup></b>	571	666	992	972
<b>Suction Connection per circuit - ODS (in.)<sup>8</sup></b>		3 5/8	3 5/8	4 1/8	4 1/8
<b>Liquid Line Connection per circuit - ODS (in.)</b>		2 1/8	2 1/8	2 5/8	2 5/8
<b>Unit Shipping Weight - Approximate (lbs.)</b>		6,100	6,438	8,261	8,597
<b>Unit Operating Weight - Approximate (lbs.)<sup>6</sup></b>		6,400	6,838	8,661	9,097

<b>Capacity Ratings</b>		<b>Capacity</b>	<b>KW<sup>6</sup></b>	<b>Capacity</b>	<b>KW<sup>6</sup></b>	<b>Capacity</b>	<b>KW<sup>6</sup></b>	<b>Capacity</b>	<b>KW<sup>6</sup></b>
<b>Ambient Temp.</b>	<b>Suction Temp.</b>								
<b>85° F</b>	-10° F	303,665	50.69	360,925	58.25	461,561	71.01	549,302	90.2
	0° F	377,847	55.87	446,909	65.44	566,940	79.82	671,850	100.4
	10° F	464,953	60.91	549,036	72.46	694,248	88.18	812,720	110.6
	20° F	560,593	65.99	662,696	79.50	836,881	96.37	969,021	121.1
	25° F	611,873	68.57	723,717	83.12	915,077	100.47	1,054,071	126.6
	30° F	665,229	71.23	788,124	86.79	997,138	104.61	1,141,444	132.3
	45° F	837,390	79.71	993,165	98.58	1,263,014	117.68	1,424,017	151.0
<b>95° F</b>	-10° F	279,302	52.03	333,504	59.74	426,399	72.75	505,080	92.5
	0° F	345,271	57.85	408,676	67.69	517,951	82.67	613,492	103.9
	10° F	423,230	63.47	499,869	75.36	631,472	91.99	740,809	115.2
	20° F	509,940	69.08	601,295	83.03	759,508	101.08	881,696	126.8
	25° F	556,477	71.90	655,340	86.95	829,299	105.61	957,838	132.8
	30° F	604,116	74.82	713,258	90.87	902,436	110.18	1,036,884	139.0
<b>105° F</b>	45° F	758,612	84.00	895,720	103.42	1,140,998	124.37	1,288,673	159.2
	-10° F	254,258	52.86	306,972	60.51	393,072	73.49	460,546	93.8
	0° F	311,884	59.38	370,267	69.33	469,666	84.68	554,120	106.6
	10° F	379,789	65.65	448,347	77.79	566,368	95.14	666,338	119.2
	20° F	457,403	71.84	537,844	86.13	680,421	105.19	791,055	131.9
	25° F	498,298	74.95	585,294	90.35	741,213	110.20	857,702	138.5
	30° F	540,640	78.12	635,482	94.60	806,010	115.19	926,608	145.3
<b>115° F</b>	45° F	675,816	88.12	-	-	-	-	-	-
	-10° F	228,926	53.14	280,955	60.54	361,402	73.20	416,049	94.3
	0° F	277,113	60.46	331,352	70.35	421,706	85.81	493,734	108.6
	10° F	335,043	67.43	395,792	79.68	501,433	97.52	588,957	122.5
	20° F	401,401	74.29	-	-	598,596	108.72	-	-
	25° F	-	-	-	-	-	-	-	-
	30° F	-	-	-	-	-	-	-	-
45° F	-	-	-	-	-	-	-	-	

- 1 - MCA (Minimum Circuit Ampacity) is calculated based on all concurrent loads applied to the circuit. (Largest load x 1.25 + 100% of all other loads including the control circuit.) Unit cooler amperes not included.
- 2 - Based on 80% full at 90°F ambient.
- 3 - Based on 100 feet of equivalent refrigerant line piping. (Does not include the evaporator.)
- 4 - KW is for the unit.
- 5 - If single circuit option is selected for DD models, some of the unit details listed below will change. Consult your local Century Representative for details.
- 6 - Operating weight reflects standard refrigerant charge.
- 7 - Dual units are standard with dual electrical and refrigerant circuiting. Multiple compressor units are standard with single electrical and refrigerant circuiting
- 8 - Size based on mounted optional suction line trim.
- "-" - Consult Local Century Representative.



<b>R-507 - Low Temp</b>		<b>Model Numbers<sup>5,7</sup></b>			
		<b>DS03L7</b>	<b>DS04L7</b>	<b>DS06L7</b>	<b>DS07L7</b>
<b>Compressor Model Number</b>		2DF3F16KE	2DL3F20KE	2DA3F23KE	3DA3F28KE
<b>Quantity of Compressors</b>		1	1	1	1
<b>MCA<sup>1</sup> per circuit</b>	<b>208/230 V</b>	27.2	40.1	43.2	40.7
	<b>460 V</b>	16.1	18.9	20.0	21.5
<b>RLA per compressor</b>	<b>208/230 V</b>	16.0	26.3	28.8	26.8
	<b>460 V</b>	8.0	10.2	11.1	12.3
<b>Total Number of Condenser Fan Motors</b>		1	1	1	1
<b>Size of Motor (HP)</b>		0.5	0.5	0.5	0.5
<b>Diameter of Blade (in.)</b>		20	20	24	24
<b>Condenser Fan Motor Amps (each)</b>	<b>208/230 V</b>	2.2	2.2	2.2	2.2
	<b>460 V</b>	1.1	1.1	1.1	1.1
<b>Receiver Size per circuit (in.)</b>		6 x 28	6 x 20	6 x 36	8.625 x 36
<b>Receiver Capacity 80% Full per circuit (lbs.)<sup>2</sup></b>		20	20	28	56
<b>Unit Operating Charge per circuit (approx. lbs.)</b>	<b>Standard<sup>3</sup></b>	19	21	30	34
	<b>w/ Flood Control<sup>3</sup></b>	30	30	41	76
<b>Suction Connection per circuit - ODS (in.)<sup>8</sup></b>		1 3/8	1 3/8	1 5/8	1 5/8
<b>Liquid Line Connection per circuit - ODS (in.)</b>		5/8	5/8	5/8	5/8
<b>Unit Shipping Weight - Approximate (lbs.)</b>		774	780	1,173	1,313
<b>Unit Operating Weight - Approximate (lbs.)<sup>6</sup></b>		765	771	1,032	1,172

<b>Capacity Ratings</b>		<b>Capacity</b>	<b>KW<sup>6</sup></b>	<b>Capacity</b>	<b>KW<sup>6</sup></b>	<b>Capacity</b>	<b>KW<sup>6</sup></b>	<b>Capacity</b>	<b>KW<sup>6</sup></b>
<b>Ambient Temp.</b>	<b>Suction Temp.</b>								
<b>85° F</b>	-40° F	12,256	3.10	14,737	3.52	17,780	4.00	21,505	4.7
	-30° F	16,453	3.69	19,516	4.16	23,418	4.70	28,589	5.6
	-20° F	21,402	4.25	25,081	4.81	30,034	5.40	36,817	6.4
	-10° F	27,012	4.80	31,306	5.49	37,569	6.13	46,234	7.2
	0° F	33,291	5.35	38,053	6.22	45,909	6.90	56,763	8.1
<b>95° F</b>	-40° F	10,755	3.03	13,157	3.49	16,007	3.99	19,164	4.7
	-30° F	14,586	3.68	17,447	4.18	21,109	4.75	25,776	5.6
	-20° F	19,095	4.29	22,454	4.87	27,116	5.51	33,432	6.5
	-10° F	24,235	4.88	28,007	5.60	33,925	6.29	42,141	7.5
	0° F	29,919	5.46	34,044	6.37	41,449	7.11	51,797	8.5
<b>105° F</b>	-40° F	9,221	2.91	11,516	3.41	14,170	3.92	16,709	4.6
	-30° F	12,655	3.62	15,294	4.16	18,689	4.76	22,833	5.6
	-20° F	16,717	4.28	19,698	4.91	24,000	5.58	29,834	6.7
	-10° F	21,323	4.92	24,570	5.68	30,061	6.42	37,777	7.7
	0° F	-	-	-	-	36,712	7.29	46,550	8.8
<b>115° F</b>	-40° F	7,630	2.73	9,846	3.28	12,237	3.79	14,113	4.4
	-30° F	10,680	3.51	13,076	4.10	16,149	4.71	19,685	5.6
	-20° F	-	-	-	-	20,782	5.61	26,052	6.7
	-10° F	-	-	-	-	-	-	-	-
	0° F	-	-	-	-	-	-	-	-

1 - MCA (Minimum Circuit Ampacity) is calculated based on all concurrent loads applied to the circuit. (Largest load x 1.25 + 100% of all other loads including the control circuit.) amperes not included.

2 - Based on 80% full at 90°F ambient.

3 - Based on 100 feet of equivalent refrigerant line piping. (Does not include the evaporator.)

4 - KW is for the unit.

5 - If single circuit option is selected for DD models, some of the unit details listed below will change. Consult your local Century Representative for details.

6 - Operating weight reflects standard refrigerant charge.

7 - Dual units are standard with dual electrical and refrigerant circuiting. Multiple compressor units are standard with single electrical and refrigerant circuiting

8 - Size based on mounted optional suction line trim.

"-" - Consult Local Century Representative.

<b>R-507 - Low Temp</b>		<b>Model Numbers<sup>5,7</sup></b>			
		<b>DS08L7</b>	<b>DS09L7</b>	<b>DS10L7</b>	<b>DS11L7</b>
<b>Compressor Model Number</b>		3DB3F33KE	3DF3F40KE	3DS3F46KE	4DA3F47KE
<b>Quantity of Compressors</b>		1	1	1	1
<b>MCA<sup>1</sup> per circuit</b>	<b>208/230 V</b>	45.6	55.9	61.4	66.6
	<b>460 V</b>	25.7	29.2	31.6	35.8
<b>RLA per compressor</b>	<b>208/230 V</b>	30.7	37.0	41.4	45.6
	<b>460 V</b>	15.7	17.5	19.4	22.8
<b>Total Number of Condenser Fan Motors</b>		1	1	1	1
<b>Size of Motor (HP)</b>		0.5	1	1	1
<b>Diameter of Blade (in.)</b>		24	28	28	28
<b>Condenser Fan Motor Amps (each)</b>	<b>208/230 V</b>	2.2	4.6	4.6	4.6
	<b>460 V</b>	1.1	2.3	2.3	2.3
<b>Receiver Size per circuit (in.)</b>		8.625 x 36	8.625 x 36	8.625 x 36	8.625 x 36
<b>Receiver Capacity 80% Full per circuit (lbs.)<sup>2</sup></b>		56	56	56	56
<b>Unit Operating Charge per circuit (approx. lbs.)</b>	<b>Standard<sup>3</sup></b>	37	42	44	51
	<b>w/ Flood Control<sup>3</sup></b>	76	82	82	91
<b>Suction Connection per circuit - ODS (in.)<sup>8</sup></b>		2 1/8	2 1/8	2 1/8	2 1/8
<b>Liquid Line Connection per circuit - ODS (in.)</b>		5/8	7/8	7/8	7/8
<b>Unit Shipping Weight - Approximate (lbs.)</b>		1,332	1,425	1,434	1,540
<b>Unit Operating Weight - Approximate (lbs.)<sup>6</sup></b>		1,217	1,295	1,329	1,435

<b>Capacity Ratings</b>		<b>Capacity</b>	<b>KW<sup>6</sup></b>	<b>Capacity</b>	<b>KW<sup>6</sup></b>	<b>Capacity</b>	<b>KW<sup>6</sup></b>	<b>Capacity</b>	<b>KW<sup>6</sup></b>
<b>Ambient Temp.</b>	<b>Suction Temp.</b>								
<b>85° F</b>	-40° F	25,283	5.50	30,851	7.08	34,841	7.81	35,698	7.9
	-30° F	33,137	6.51	40,493	8.28	45,463	9.21	47,522	9.4
	-20° F	42,375	7.53	51,901	9.53	57,752	10.64	60,920	10.9
	-10° F	52,852	8.60	64,893	10.90	71,498	12.16	75,898	12.3
	0° F	64,445	9.76	79,457	12.42	86,599	13.82	92,198	13.8
<b>95° F</b>	-40° F	23,027	5.54	28,136	7.15	31,682	7.85	31,606	7.7
	-30° F	30,171	6.64	36,948	8.46	41,426	9.38	42,664	9.4
	-20° F	38,556	7.76	47,369	9.83	52,595	10.94	55,065	11.1
	-10° F	48,049	8.92	59,226	11.30	65,028	12.58	68,695	12.7
	0° F	58,528	10.17	72,435	12.94	78,539	14.35	83,586	14.4
<b>105° F</b>	-40° F	20,683	5.49	25,354	7.14	28,363	7.79	27,217	7.4
	-30° F	27,088	6.71	33,260	8.58	37,070	9.47	37,453	9.4
	-20° F	34,556	7.93	42,606	10.07	47,072	11.17	48,717	11.2
	-10° F	42,998	9.20	53,235	11.67	58,091	12.94	61,067	13.1
	0° F	52,225	10.55	-	-	-	-	74,279	14.9
<b>115° F</b>	-40° F	18,243	5.36	22,469	7.05	24,839	7.63	22,461	6.9
	-30° F	23,807	6.71	29,376	8.64	32,469	9.47	31,814	9.1
	-20° F	-	-	-	-	-	-	41,927	11.2
	-10° F	-	-	-	-	-	-	-	-
	0° F	-	-	-	-	-	-	-	-

1 - MCA (Minimum Circuit Ampacity) is calculated based on all concurrent loads applied to the circuit. (Largest load x 1.25 + 100% of all other loads including the control circuit.) Unit cooler amperages not included.

2 - Based on 80% full at 90°F ambient.

3 - Based on 100 feet of equivalent refrigerant line piping. (Does not include the evaporator.)

4 - KW is for the unit.

5 - If single circuit option is selected for DD models, some of the unit details listed below will change. Consult your local Century Representative for details.

6 - Operating weight reflects standard refrigerant charge.

7 - Dual units are standard with dual electrical and refrigerant circuiting. Multiple compressor units are standard with single electrical and refrigerant circuiting

8 - Size based on mounted optional suction line trim.

"-" - Consult Local Century Representative.

<b>R-507 - Low Temp</b>		<b>Model Numbers<sup>5,7</sup></b>			
		<b>DS15L7</b>	<b>DS22L7</b>	<b>DS27L7</b>	<b>DS30L7</b>
<b>Compressor Model Number</b>		4DHNF63KE	4DJNF76KE	6DHNF93KE	6DJNF11ME
<b>Quantity of Compressors</b>		1	1	1	1
<b>MCA<sup>1</sup> per circuit</b>	<b>208/230 V</b>	78.7	94.6	122.7	143.6
	<b>460 V</b>	41.8	49.7	63.9	73.7
<b>RLA per compressor</b>	<b>208/230 V</b>	55.4	64.3	83.1	99.8
	<b>460 V</b>	27.7	32.1	41.6	49.4
<b>Total Number of Condenser Fan Motors</b>		2	2	3	3
<b>Size of Motor (HP)</b>		0.5	1	1	1
<b>Diameter of Blade (in.)</b>		24	28	28	28
<b>Condenser Fan Motor Amps (each)</b>	<b>208/230 V</b>	2.2	4.6	4.6	4.6
	<b>460 V</b>	1.1	2.3	2.3	2.3
<b>Receiver Size per circuit (in.)</b>		8.625 x 60	8.625 x 60	8.625 x 60	10.75 x 60
<b>Receiver Capacity 80% Full per circuit (lbs.)<sup>2</sup></b>		94	94	94	144
<b>Unit Operating Charge per circuit (approx. lbs.)</b>	<b>Standard<sup>3</sup></b>	68	80	93	125
	<b>w/ Flood Control<sup>3</sup></b>	127	136	147	215
<b>Suction Connection per circuit - ODS (in.)<sup>8</sup></b>		2 1/8	2 5/8	2 5/8	2 5/8
<b>Liquid Line Connection per circuit - ODS (in.)</b>		7/8	1 1/8	1 1/8	1 1/8
<b>Unit Shipping Weight - Approximate (lbs.)</b>		1,663	1,853	2,201	2,329
<b>Unit Operating Weight - Approximate (lbs.)<sup>6</sup></b>		1,552	1,747	2,040	2,208

<b>Capacity Ratings</b>		<b>Capacity</b>	<b>KW<sup>6</sup></b>	<b>Capacity</b>	<b>KW<sup>6</sup></b>	<b>Capacity</b>	<b>KW<sup>6</sup></b>	<b>Capacity</b>	<b>KW<sup>6</sup></b>
<b>Ambient Temp.</b>	<b>Suction Temp.</b>								
<b>85° F</b>	-40° F	47,262	10.41	56,970	12.99	70,290	16.67	81,326	19.5
	-30° F	61,965	12.33	74,809	15.32	93,697	19.66	106,391	23.0
	-20° F	78,358	14.22	94,886	17.61	120,376	22.62	135,880	26.5
	-10° F	96,395	16.13	116,866	19.94	150,205	25.68	169,490	30.3
	0° F	115,738	18.14	140,636	22.38	183,111	28.96	206,757	34.5
<b>95° F</b>	-40° F	42,694	10.44	51,015	12.91	62,425	16.47	73,466	19.5
	-30° F	56,236	12.57	67,420	15.49	84,423	19.81	96,303	23.3
	-20° F	71,206	14.64	85,661	18.00	109,252	23.12	123,017	27.2
	-10° F	87,361	16.74	105,443	20.55	136,993	26.51	153,261	31.3
	0° F	104,619	18.92	126,691	23.19	167,114	30.14	186,664	35.8
<b>105° F</b>	-40° F	37,681	10.30	44,560	12.64	53,852	16.03	65,365	19.2
	-30° F	49,981	12.65	59,435	15.48	74,457	19.76	85,583	23.4
	-20° F	63,353	14.94	75,717	18.25	97,412	23.44	109,246	27.7
	-10° F	77,597	17.24	93,175	21.03	122,607	27.21	136,200	32.1
	0° F	-	-	111,599	23.90	149,896	31.21	165,498	37.0
<b>115° F</b>	-40° F	32,210	9.99	37,465	12.16	44,782	15.35	56,749	18.8
	-30° F	43,107	12.60	50,735	15.30	63,753	19.50	74,301	23.4
	-20° F	-	-	-	-	-	-	94,820	28.0
	-10° F	-	-	-	-	-	-	-	-
	0° F	-	-	-	-	-	-	-	-

1 - MCA (Minimum Circuit Ampacity) is calculated based on all concurrent loads applied to the circuit. (Largest load x 1.25 + 100% of all other loads including the control circuit.) amperes not included.

2 - Based on 80% full at 90°F ambient.

3 - Based on 100 feet of equivalent refrigerant line piping. (Does not include the evaporator.)

4 - KW is for the unit.

5 - If single circuit option is selected for DD models, some of the unit details listed below will change. Consult your local Century Representative for details.

6 - Operating weight reflects standard refrigerant charge.

7 - Dual units are standard with dual electrical and refrigerant circuiting. Multiple compressor units are standard with single electrical and refrigerant circuiting

8 - Size based on mounted optional suction line trim.

"-" - Consult Local Century Representative.

<b>R-507 - Low Temp</b>		<b>Model Numbers<sup>5,7</sup></b>			
		<b>DD12L7</b>	<b>DD14L7</b>	<b>DD16L7</b>	<b>DD18L7</b>
<b>Compressor Model Number</b>		2DA3F23KE	3DA3F28KE	3DB3F33KE	3DF3F40KE
<b>Quantity of Compressors</b>		2	2	2	2
<b>MCA<sup>1</sup> per circuit</b>	<b>208/230 V</b>	45.4	42.9	47.8	60.5
	<b>460 V</b>	21.1	22.6	26.8	31.5
<b>RLA per compressor</b>	<b>208/230 V</b>	28.8	26.8	30.7	37.0
	<b>460 V</b>	11.1	12.3	15.7	17.5
<b>Total Number of Condenser Fan Motors</b>		2	2	2	2
<b>Size of Motor (HP)</b>		0.5	0.5	0.5	1
<b>Diameter of Blade (in.)</b>		24	24	24	28
<b>Condenser Fan Motor Amps (each)</b>	<b>208/230 V</b>	2.2	2.2	2.2	4.6
	<b>460 V</b>	1.1	1.1	1.1	2.3
<b>Receiver Size per circuit (in.)</b>		6 x 36	8.625 x 36	8.625 x 6	8.625 x 36
<b>Receiver Capacity 80% Full per circuit (lbs.)<sup>2</sup></b>		28	56	56	56
<b>Unit Operating Charge per circuit (approx. lbs.)</b>	<b>Standard<sup>3</sup></b>	30	37	34	42
	<b>w/ Flood Control<sup>3</sup></b>	40	74	74	88
<b>Suction Connection per circuit - ODS (in.)<sup>8</sup></b>		1 5/8	1 5/8	2 1/8	2 1/8
<b>Liquid Line Connection per circuit - ODS (in.)</b>		5/8	5/8	5/8	5/8
<b>Unit Shipping Weight - Approximate (lbs.)</b>		2,354	2,651	2,672	2,699
<b>Unit Operating Weight - Approximate (lbs.)<sup>6</sup></b>		2,421	2,490	2,536	2,513

<b>Capacity Ratings</b>		<b>Capacity</b>	<b>KW<sup>6</sup></b>	<b>Capacity</b>	<b>KW<sup>6</sup></b>	<b>Capacity</b>	<b>KW<sup>6</sup></b>	<b>Capacity</b>	<b>KW<sup>6</sup></b>
<b>Ambient Temp.</b>	<b>Suction Temp.</b>								
<b>85° F</b>	-40° F	35,598	8.00	42,523	9.43	49,719	11.03	61,474	14.2
	-30° F	46,934	9.40	56,414	11.14	64,904	13.10	80,613	16.6
	-20° F	60,193	10.80	72,492	12.81	82,563	15.20	103,132	19.1
	-10° F	75,378	12.24	90,810	14.53	102,368	17.44	128,808	21.9
	0° F	92,222	13.78	111,061	16.37	123,965	19.88	157,367	25.0
<b>95° F</b>	-40° F	32,052	7.98	37,889	9.33	45,215	11.07	56,036	14.3
	-30° F	42,322	9.51	50,798	11.25	58,953	13.33	73,504	16.9
	-20° F	54,366	11.02	65,713	13.12	74,945	15.63	94,025	19.7
	-10° F	68,021	12.57	82,589	15.04	92,736	18.04	117,407	22.7
	0° F	83,224	14.20	101,162	17.07	112,039	20.66	143,210	26.0
<b>105° F</b>	-40° F	28,373	7.84	32,997	9.08	40,587	10.95	50,464	14.3
	-30° F	37,487	9.52	44,860	11.23	52,768	13.44	66,108	17.2
	-20° F	48,143	11.16	58,513	13.33	66,884	15.94	84,562	20.2
	-10° F	60,306	12.83	73,829	15.46	82,625	18.56	105,493	23.4
	0° F	73,658	14.57	90,599	17.71	-	-	-	-
<b>115° F</b>	-40° F	24,511	7.59	27,815	8.68	35,721	10.67	44,684	14.1
	-30° F	32,414	9.43	38,651	11.09	46,267	13.41	58,317	17.3
	-20° F	41,641	11.22	50,954	13.43	-	-	-	-
	-10° F	-	-	-	-	-	-	-	-
	0° F	-	-	-	-	-	-	-	-

1 - MCA (Minimum Circuit Ampacity) is calculated based on all concurrent loads applied to the circuit. (Largest load x 1.25 + 100% of all other loads including the control circuit.) Unit amperes not included.

2 - Based on 80% full at 90°F ambient.

3 - Based on 100 feet of equivalent refrigerant line piping. (Does not include the evaporator.)

4 - KW is for the unit.

5 - If single circuit option is selected for DD models, some of the unit details listed below will change. Consult your local Century Representative for details.

6 - Operating weight reflects standard refrigerant charge.

7 - Dual units are standard with dual electrical and refrigerant circuiting. Multiple compressor units are standard with single electrical and refrigerant circuiting

8 - Size based on mounted optional suction line trim.

"-" - Consult Local Century Representative.

<b>R-507 - Low Temp</b>		<b>Model Numbers<sup>5,7</sup></b>			
		<b>DD20L7</b>	<b>DD22L7</b>	<b>DD30L7</b>	<b>DD44L7</b>
<b>Compressor Model Number</b>		3DS3F46KE	4DA3F47KE	4DHNF63KE	4DJNF76KE
<b>Quantity of Compressors</b>		2	2	2	2
<b>MCA<sup>1</sup> per circuit</b>	<b>208/230 V</b>	65.6	70.8	83.1	103.8
	<b>460 V</b>	33.7	37.9	44.0	54.3
<b>RLA per compressor</b>	<b>208/230 V</b>	41.4	45.6	55.4	64.3
	<b>460 V</b>	19.4	22.8	27.7	32.1
<b>Total Number of Condenser Fan Motors</b>		4	4	4	4
<b>Size of Motor (HP)</b>		0.5	0.5	0.5	1
<b>Diameter of Blade (in.)</b>		24	24	24	28
<b>Condenser Fan Motor Amps (each)</b>	<b>208/230 V</b>	2.2	2.2	2.2	4.6
	<b>460 V</b>	1.1	1.1	1.1	2.3
<b>Receiver Size per circuit (in.)</b>		8.625 x 36	8.625 x 36	8.625 x 60	8.625 x 60
<b>Receiver Capacity 80% Full per circuit (lbs.)</b>		56	56	94	94
<b>Unit Operating Charge per circuit (approx. lbs.)</b>	<b>Standard<sup>3</sup></b>	44	51	68	80
	<b>w/ Flood Control<sup>3</sup></b>	77	86	124	134
<b>Suction Connection per circuit - ODS (in.)<sup>8</sup></b>		2 1/8	2 1/8	2 1/8	2 5/8
<b>Liquid Line Connection per circuit - ODS (in.)</b>		5/8	5/8	7/8	1 1/8
<b>Unit Shipping Weight - Approximate (lbs.)</b>		2,954	3,456	3,253	3,546
<b>Unit Operating Weight - Approximate (lbs.)<sup>6</sup></b>		2,783	3,285	3,097	3,420

<b>Capacity Ratings</b>		<b>Capacity</b>	<b>KW<sup>6</sup></b>	<b>Capacity</b>	<b>KW<sup>6</sup></b>	<b>Capacity</b>	<b>KW<sup>6</sup></b>	<b>Capacity</b>	<b>KW<sup>6</sup></b>
<b>Ambient Temp.</b>	<b>Suction Temp.</b>								
<b>85° F</b>	-40° F	70,071	15.60	71,988	15.72	94,801	20.82	114,062	26.0
	-30° F	91,515	18.38	95,957	18.77	124,282	24.64	149,926	30.6
	-20° F	116,372	21.22	123,198	21.64	157,317	28.40	189,966	35.2
	-10° F	144,523	24.21	153,769	24.44	193,750	32.19	234,226	39.9
	0° F	175,320	27.48	187,212	27.29	232,703	36.19	282,209	44.7
<b>95° F</b>	-40° F	63,780	15.70	63,815	15.41	85,701	20.88	102,166	25.8
	-30° F	83,398	18.75	86,219	18.88	112,866	25.12	135,012	31.0
	-20° F	106,130	21.83	111,486	22.15	142,914	29.26	171,753	36.0
	-10° F	131,562	25.07	139,555	25.33	175,787	33.41	211,430	41.1
	0° F	159,380	28.56	170,050	28.55	210,590	37.75	254,067	46.3
<b>105° F</b>	-40° F	57,098	15.60	54,874	14.81	75,595	20.61	89,271	25.3
	-30° F	74,826	18.94	75,760	18.74	100,402	25.31	119,059	31.0
	-20° F	95,036	22.30	98,771	22.44	127,262	29.87	151,671	36.5
	-10° F	117,653	25.80	124,139	26.04	156,135	34.43	186,948	42.0
	0° F	142,286	29.55	151,478	29.68	-	-	223,948	47.8
<b>115° F</b>	-40° F	49,998	15.28	45,321	13.89	64,679	20.01	75,077	24.3
	-30° F	65,574	18.95	64,429	18.31	86,701	25.20	101,677	30.6
	-20° F	-	-	85,153	22.49	-	-	-	-
	-10° F	-	-	-	-	-	-	-	-
	0° F	-	-	-	-	-	-	-	-

- 1 - MCA (Minimum Circuit Ampacity) is calculated based on all concurrent loads applied to the circuit. (Largest load x 1.25 + 100% of all other loads including the control circuit.) amperges not included.
- 2 - Based on 80% full at 90°F ambient.
- 3 - Based on 100 feet of equivalent refrigerant line piping. (Does not include the evaporator)
- 4 - KW is for the unit.
- 5 - If single circuit option is selected for DD models, some of the unit details listed below will change. Consult your local Century Representative for details.
- 6 - Operating weight reflects standard refrigerant charge.
- 7 - Dual units are standard with dual electrical and refrigerant circuiting. Multiple compressor units are standard with single electrical and refrigerant circuiting
- 8 - Size based on mounted optional suction line trim.
- "-" - Consult Local Century Representative.



<b>R-507 - Low Temp</b>		<b>Model Numbers<sup>5,7</sup></b>			
		<b>DD54L7</b>	<b>DD60L7</b>	<b>DM45L7</b>	<b>DM66L7</b>
<b>Compressor Model Number</b>		6DHN93KE	6DJNF11ME	4DHN63KE	4DJNF76KE
<b>Quantity of Compressors</b>		2	2	3	3
<b>MCA<sup>1</sup> per circuit</b>	<b>208/230 V</b>	136.5	157.4	101.9	113.0
	<b>460 V</b>	70.8	80.6	53.4	58.9
<b>RLA per compressor</b>	<b>208/230 V</b>	83.1	99.8	55.4	64.3
	<b>460 V</b>	41.6	49.4	27.7	32.1
<b>Total Number of Condenser Fan Motors</b>		6	6	6	6
<b>Size of Motor (HP)</b>		1	1	1	1
<b>Diameter of Blade (in.)</b>		28	28	28	28
<b>Condenser Fan Motor Amps (each)</b>	<b>208/230 V</b>	4.6	4.6	4.6	4.6
	<b>460 V</b>	2.3	2.3	2.3	2.3
<b>Receiver Size per circuit (in.)</b>		8.625 x 60	10.75 x 60	14 x 72	14 x 72
<b>Receiver Capacity 80% Full per circuit (lbs.)<sup>2</sup></b>		94	144	294	294
<b>Unit Operating Charge per circuit (approx. lbs.)</b>	<b>Standard<sup>3</sup></b>	93	125	195	213
	<b>w/ Flood Control<sup>3</sup></b>	148	211	290	308
<b>Suction Connection per circuit - ODS (in.)<sup>8</sup></b>		2 5/8	2 5/8	3 1/8	3 5/8
<b>Liquid Line Connection per circuit - ODS (in.)</b>		1 1/8	1 1/8	1 3/8	1 3/8
<b>Unit Shipping Weight - Approximate (lbs.)</b>		4,044	4,847	5,165	5,371
<b>Unit Operating Weight - Approximate (lbs.)<sup>6</sup></b>		3,843	4,736	5,465	5,671

<b>Capacity Ratings</b>		<b>Capacity</b>	<b>KW<sup>6</sup></b>	<b>Capacity</b>	<b>KW<sup>6</sup></b>	<b>Capacity</b>	<b>KW<sup>6</sup></b>	<b>Capacity</b>	<b>KW<sup>6</sup></b>
<b>Ambient Temp.</b>	<b>Suction Temp.</b>								
<b>85° F</b>	-40° F	140,580	33.34	163,305	38.97	139,966	34.57	167,559	39.0
	-30° F	187,394	39.32	214,056	45.85	183,043	40.45	219,036	46.1
	-20° F	240,753	45.24	273,668	52.91	230,733	46.25	276,341	53.2
	-10° F	300,410	51.36	341,752	60.42	282,445	52.20	338,515	60.5
	0° F	366,222	57.92	417,891	68.61	337,467	58.45	404,167	68.2
<b>95° F</b>	-40° F	124,669	32.94	147,787	38.98	126,195	34.59	149,743	38.6
	-30° F	168,634	39.63	193,734	46.56	165,719	41.07	196,819	46.5
	-20° F	218,503	46.24	247,784	54.28	208,791	47.44	248,466	54.3
	-10° F	273,677	53.04	309,504	62.41	255,276	53.90	303,878	62.2
	0° F	333,849	60.30	378,049	71.24	303,540	60.68	362,236	70.5
<b>105° F</b>	-40° F	107,703	32.06	131,322	38.52	111,109	34.12	130,260	37.7
	-30° F	148,682	39.53	172,366	46.88	146,841	41.27	172,592	46.4
	-20° F	194,546	46.89	220,679	55.31	185,276	48.25	218,508	54.9
	-10° F	245,215	54.42	275,206	64.15	226,002	55.30	267,251	63.5
	0° F	299,378	62.45	335,575	73.67	-	-	-	-
<b>115° F</b>	-40° F	89,376	30.69	113,981	37.54	94,673	33.15	109,265	36.2
	-30° F	127,507	39.00	149,880	46.76	126,372	41.03	146,869	45.7
	-20° F	-	-	191,647	56.00	-	-	-	-
	-10° F	-	-	-	-	-	-	-	-
	0° F	-	-	-	-	-	-	-	-

1 - MCA (Minimum Circuit Ampacity) is calculated based on all concurrent loads applied to the circuit. (Largest load x 1.25 + 100% of all other loads including the control circuit.) Unit cooler amperages not included.

2 - Based on 80% full at 90°F ambient.

3 - Based on 100 feet of equivalent refrigerant line piping. (Does not include the evaporator.)

4 - KW is for the unit.

5 - If single circuit option is selected for DD models, some of the unit details listed below will change. Consult your local Century Representative for details.

6 - Operating weight reflects standard refrigerant charge.

7 - Dual units are standard with dual electrical and refrigerant circuiting. Multiple compressor units are standard with single electrical and refrigerant circuiting

8 - Size based on mounted optional suction line trim.

"-" - Consult Local Century Representative.

<b>R-507 - Low Temp</b>		<b>Model Numbers<sup>5,7</sup></b>	
		<b>DM81L7</b>	<b>DM90L7</b>
<b>Compressor Model Number</b>		6DHNF93KE	6DJNF11ME
<b>Quantity of Compressors</b>		3	3
<b>MCA<sup>1</sup> per circuit</b>	<b>208/230 V</b>	136.5	157.4
	<b>460 V</b>	70.8	80.6
<b>RLA per compressor</b>	<b>208/230 V</b>	83.1	99.8
	<b>460 V</b>	41.6	49.4
<b>Total Number of Condenser Fan Motors</b>		6	6
<b>Size of Motor (HP)</b>		1	1
<b>Diameter of Blade (in.)</b>		28	28
<b>Condenser Fan Motor Amps (each)</b>	<b>208/230 V</b>	4.6	4.6
	<b>460 V</b>	2.3	2.3
<b>Receiver Size per circuit (in.)</b>		14 x 96	14 x 96
<b>Receiver Capacity 80% Full per circuit (lbs.)<sup>2</sup></b>		386	386
<b>Unit Operating Charge per circuit (approx. lbs.)</b>	<b>Standard<sup>3</sup></b>	266	317
	<b>w/ Flood Control<sup>3</sup></b>	409	507
<b>Suction Connection per circuit - ODS (in.)<sup>8</sup></b>		3 5/8	4 1/8
<b>Liquid Line Connection per circuit - ODS (in.)</b>		1 5/8	2 1/8
<b>Unit Shipping Weight - Approximate (lbs.)</b>		5,865	6,009
<b>Unit Operating Weight - Approximate (lbs.)<sup>6</sup></b>		6,165	6,409

<b>Capacity Ratings</b>		<b>Capacity</b>	<b>KW<sup>5</sup></b>	<b>Capacity</b>	<b>KW<sup>5</sup></b>
<b>Ambient Temp.</b>	<b>Suction Temp.</b>				
<b>85° F</b>	-40° F	203,302	46.59	236,827	55.23
	-30° F	269,755	55.94	307,545	66.03
	-20° F	343,880	65.41	389,306	77.27
	-10° F	425,621	75.38	480,772	89.36
	0° F	513,727	86.26	579,667	102.77
<b>95° F</b>	-40° F	179,618	45.79	213,665	55.03
	-30° F	241,606	56.16	277,253	66.82
	-20° F	310,566	66.60	350,789	78.99
	-10° F	385,235	77.56	432,324	92.00
	0° F	464,376	89.48	519,184	106.35
<b>105° F</b>	-40° F	154,565	44.32	189,338	54.11
	-30° F	211,771	55.78	245,456	67.02
	-20° F	274,844	67.29	309,622	80.25
	-10° F	-	-	380,960	94.27
	0° F	-	-	-	-
<b>115° F</b>	-40° F	127,792	42.12	164,316	52.48
	-30° F	180,213	54.79	212,054	66.61
	-20° F	-	-	-	-
	-10° F	-	-	-	-
	0° F	-	-	-	-

1 - MCA (Minimum Circuit Ampacity) is calculated based on all concurrent loads applied to the circuit. (Largest load x 1.25 + 100% of all other loads including the control circuit.) amperes not included.

2 - Based on 80% full at 90°F ambient.

3 - Based on 100 feet of equivalent refrigerant line piping. (Does not include the evaporator.) 7 - Dual units are standard with dual electrical and refrigerant circuiting. Multiple compressor units are standard with single electrical and refrigerant circuiting

4 - KW is for the unit.

5 - If single circuit option is selected for DD models, some of the unit details listed below will change. Consult your local Century Representative for details.

6 - Operating weight reflects standard refrigerant charge.

8 - Size based on mounted optional suction line trim.

9 - Consult Local Century Representative

<b>R-507 - High Temp</b>	<b>Model Numbers<sup>5,7</sup></b>			
	<b>DS05H7</b>	<b>DS08H7</b>	<b>DS09H7</b>	<b>DS10H7</b>
Compressor Model Number	2DD3R63KE	2DA3R89KE	3DA3R10ME	3DB3R12ME
Quantity of Compressors	1	1	1	1
MCA <sup>1</sup> per circuit	208/230 V	35.1	49.6	60.9
	460 V	19.2	26.6	32.3
RLA per compressor	208/230 V	22.3	32.0	41.0
	460 V	10.5	15.4	20.0
Total Number of Condenser Fan Motors	1	1	1	2
Size of Motor (HP)	0.5	1	1	0.5
Diameter of Blade (in.)	24	28	28	24
Condenser Fan Motor Amps (each)	208/230 V	2.2	4.6	4.6
	460 V	1.1	2.3	2.3
Receiver Size per circuit (in.)	6 x 36	8.625 x 36	8.625 x 42	8.625 x 42
Receiver Capacity 80% Full per circuit (lbs.) <sup>2</sup>	28	56	63	63
Unit Operating Charge per circuit (approx. lbs.)	Standard <sup>3</sup>	29	37	49
	w/ Flood Control <sup>3</sup>	41	81	88
Suction Connection per circuit - ODS (in.) <sup>8</sup>	1 3/8	1 5/8	1 5/8	2 1/8
Liquid Line Connection per circuit - ODS (in.)	5/8	7/8	7/8	7/8
Unit Shipping Weight - Approximate (lbs.)	1,159	1,333	1,428	1,542
Unit Operating Weight - Approximate (lbs.) <sup>6</sup>	1,018	1,218	1,298	1,421

<b>Capacity Ratings</b>		Capacity	KW <sup>6</sup>	Capacity	KW <sup>6</sup>	Capacity	KW <sup>6</sup>	Capacity	KW <sup>6</sup>
Ambient Temp.	Suction Temp.								
<b>85° F</b>	-10° F	28,331	4.11	43,088	6.36	50,812	7.49	60,302	8.8
	0° F	35,511	4.66	52,804	7.04	61,406	8.30	73,449	9.8
	10° F	43,832	5.17	64,516	7.70	74,237	9.08	89,000	10.7
	20° F	53,044	5.68	77,635	8.35	88,826	9.85	106,417	11.7
	25° F	57,961	5.93	84,763	8.69	96,764	10.24	115,820	12.1
	30° F	63,039	6.18	92,222	9.03	105,175	10.63	125,607	12.6
	45° F	79,195	6.97	116,223	10.12	131,847	11.89	157,105	14.2
<b>95° F</b>	-10° F	26,021	4.17	39,962	6.49	48,107	7.71	56,406	9.1
	0° F	32,233	4.78	48,337	7.26	56,885	8.62	67,654	10.2
	10° F	39,644	5.36	58,627	8.00	67,988	9.49	81,391	11.2
	20° F	47,725	5.92	70,377	8.74	80,750	10.34	96,748	12.3
	25° F	52,092	6.20	76,682	9.11	87,733	10.76	105,108	12.8
	30° F	56,674	6.47	83,372	9.48	95,037	11.19	113,664	13.3
<b>105° F</b>	45° F	70,858	7.33	104,713	10.68	118,638	12.54	141,565	15.0
	-10° F	23,757	4.16	36,979	6.53	45,777	7.83	52,674	9.3
	0° F	28,939	4.85	43,877	7.42	52,571	8.86	61,876	10.5
	10° F	35,220	5.50	52,614	8.25	61,720	9.83	73,457	11.7
	20° F	42,273	6.12	62,902	9.07	72,432	10.77	86,739	12.8
	25° F	46,059	6.42	68,417	9.48	78,368	11.23	93,842	13.4
	30° F	49,954	6.73	74,181	9.90	84,592	11.70	101,363	13.9
<b>115° F</b>	45° F	-	-	-	-	-	-	-	-
	-10° F	21,562	4.07	34,171	6.49	43,860	7.83	49,142	9.3
	0° F	25,597	4.86	39,460	7.50	48,413	9.01	56,116	10.7
	10° F	30,701	5.59	46,521	8.44	-	-	65,331	12.0
	20° F	-	-	-	-	-	-	-	-
	25° F	-	-	-	-	-	-	-	-
	30° F	-	-	-	-	-	-	-	-
45° F	-	-	-	-	-	-	-	-	

1 - MCA (Minimum Circuit Ampacity) is calculated based on all concurrent loads applied to the circuit. (Largest load x 1.25 + 100% of all other loads including the control circuit.) Unit cooler amperes not included.

2 - Based on 80% full at 90°F ambient.

3 - Based on 100 feet of equivalent refrigerant line piping. (Does not include the evaporator.)

4 - KW is for the unit.

5 - If single circuit option is selected for DD models, some of the unit details listed below will change. Consult your local Century Representative for details.

6 - Operating weight reflects standard refrigerant charge.

7 - Dual units are standard with dual electrical and refrigerant circuiting. Multiple compressor units are standard with single electrical and refrigerant circuiting.

8 - Size based on mounted optional suction line trim.

"" - Consult Local Century Representative.

<b>R-507 - High Temp</b>	<b>Model Numbers<sup>5,7</sup></b>			
	<b>DS12H7</b>	<b>DS15H7</b>	<b>DS20H7</b>	<b>DS25H7</b>
<b>Compressor Model Number</b>	3DF3R15ME	3DS3R17ME	4DA3R18ME	4DHN22ME
<b>Quantity of Compressors</b>	1	1	1	1
<b>MCA<sup>1</sup> per circuit</b>	<b>208/230 V</b>	84.0	86.7	92.7
	<b>460 V</b>	44.5	45.8	48.9
<b>RLA per compressor</b>	<b>208/230 V</b>	55.8	61.8	62.8
	<b>460 V</b>	27.9	30.9	31.4
<b>Total Number of Condenser Fan Motors</b>	2	2	2	3
<b>Size of Motor (HP)</b>	1	1	1	1
<b>Diameter of Blade (in.)</b>	28	28	28	28
<b>Condenser Fan Motor Amps (each)</b>	<b>208/230 V</b>	4.6	2.2	4.6
	<b>460 V</b>	2.3	1.1	2.3
<b>Receiver Size per circuit (in.)</b>	8.625 x 60	8.625 x 60	8.625 x 60	8.625 x 60
<b>Receiver Capacity 80% Full per circuit (lbs.)<sup>2</sup></b>	94	94	94	94
<b>Unit Operating Charge per circuit (approx. lbs.)</b>	<b>Standard<sup>3</sup></b>	66	72	75
	<b>w/ Flood Control<sup>3</sup></b>	132	132	133
<b>Suction Connection per circuit - ODS (in.)<sup>8</sup></b>	2 1/8	2 1/8	2 1/8	2 1/8
<b>Liquid Line Connection per circuit - ODS (in.)</b>	1 1/8	1 1/8	1 1/8	1 1/8
<b>Unit Shipping Weight - Approximate (lbs.)</b>	1,745	1,757	1,850	2,121
<b>Unit Operating Weight - Approximate (lbs.)<sup>6</sup></b>	1,614	1,626	1,719	1,990

<b>Capacity Ratings</b>		<b>Capacity</b>	<b>KW<sup>6</sup></b>	<b>Capacity</b>	<b>KW<sup>6</sup></b>	<b>Capacity</b>	<b>KW<sup>6</sup></b>	<b>Capacity</b>	<b>KW<sup>6</sup></b>
<b>Ambient Temp.</b>	<b>Suction Temp.</b>								
<b>85° F</b>	-10° F	75,491	11.81	83,052	12.91	84,282	13.05	108,603	17.6
	0° F	91,825	13.01	100,702	14.28	104,482	14.55	134,187	19.5
	10° F	111,794	14.19	121,677	15.63	127,799	15.96	163,169	21.3
	20° F	134,059	15.41	145,122	17.04	153,354	17.34	194,607	23.1
	25° F	146,185	16.04	157,944	17.77	166,843	18.03	211,457	24.1
	30° F	158,702	16.70	171,115	18.54	181,187	18.72	228,807	25.1
	45° F	199,705	18.85	213,591	21.04	226,020	20.90	283,526	28.2
<b>95° F</b>	-10° F	70,739	12.15	77,840	13.27	76,186	13.16	99,432	18.1
	0° F	84,643	13.50	92,740	14.80	93,859	14.86	122,000	20.1
	10° F	101,966	14.81	111,101	16.30	114,667	16.46	147,960	22.1
	20° F	121,817	16.15	131,745	17.83	137,410	18.00	176,127	24.1
	25° F	132,462	16.85	142,919	18.63	149,453	18.77	190,972	25.2
	30° F	143,763	17.56	154,532	19.46	162,061	19.53	206,444	26.2
	45° F	179,802	19.89	191,655	22.17	201,519	21.94	254,557	29.6
<b>105° F</b>	-10° F	66,268	12.37	72,973	13.49	68,064	13.09	90,012	18.3
	0° F	77,516	13.88	84,901	15.20	83,012	15.02	109,328	20.6
	10° F	92,028	15.35	100,261	16.87	100,880	16.82	131,933	22.8
	20° F	109,214	16.84	117,816	18.57	120,767	18.55	156,393	25.0
	25° F	118,426	17.60	127,376	19.44	131,270	19.41	169,329	26.2
	30° F	128,061	18.38	137,317	20.34	142,021	20.27	182,814	27.3
	45° F	-	-	-	-	-	-	-	-
<b>115° F</b>	-10° F	62,164	12.46	68,481	13.56	59,912	12.83	80,331	18.3
	0° F	70,507	14.16	77,192	15.49	71,931	15.02	96,271	20.9
	10° F	81,884	15.81	-	-	86,671	17.05	114,957	23.4
	20° F	-	-	-	-	-	-	-	-
	25° F	-	-	-	-	-	-	-	-
	30° F	-	-	-	-	-	-	-	-
	45° F	-	-	-	-	-	-	-	-

1 - MCA (Minimum Circuit Ampacity) is calculated based on all concurrent loads applied to the circuit. (Largest load x 1.25 + 100% of all other loads including the control circuit.) Unit cooler amperages not included.

2 - Based on 80% full at 90°F ambient.

3 - Based on 100 feet of equivalent refrigerant line piping. (Does not include the evaporator.)

4 - KW is for the unit.

5 - If single circuit option is selected for DD models, some of the unit details listed below will change. Consult your local Century Representative for details.

6 - Operating weight reflects standard refrigerant charge.

7 - Dual units are standard with dual electrical and refrigerant circuiting. Multiple compressor units are standard with single electrical and refrigerant circuiting

8 - Size based on mounted optional suction line trim.

"-" - Consult Local Century Representative.

R-507 - High Temp	Model Numbers <sup>5,7</sup>			
	DS30H7	DS35H7	DS40H7	DD10H7
Compressor Model Number	4DJNR28ME	6DHNR35ME	6DJNR40ME	2DD3R63KE
Quantity of Compressors	1	1	1	2
MCA <sup>1</sup> per circuit	208/230 V	146.7	179.8	247.0
	460 V	75.9	92.5	208.7
RLA per compressor	208/230 V	102.3	125.1	178.9
	460 V	51.2	62.6	155.6
Total Number of Condenser Fan Motors	3	4	4	2
Size of Motor (HP)	1	1	1	0.5
Diameter of Blade (in.)	28	28	28	24
Condenser Fan Motor Amps (each)	208/230 V	4.6	4.6	2.2
	460 V	2.3	2.3	1.1
Receiver Size per circuit (in.)	10.75 x 60	10.75 x 60	12.75 x 60	6 x 36
Receiver Capacity 80% Full per circuit (lbs.)	144	144	191	28
Unit Operating Charge per circuit (approx. lbs.)	Standard <sup>3</sup>	120	133	154
	w/ Flood Control <sup>3</sup>	212	212	254
Suction Connection per circuit - ODS (in.) <sup>8</sup>	2 5/8	2 5/8	2 5/8	1 3/8
Liquid Line Connection per circuit - ODS (in)	1 3/8	1 3/8	1 3/8	5/8
Unit Shipping Weight - Approximate (lbs.)	2,297	2,584	2,776	2,425
Unit Operating Weight - Approximate (lbs.) <sup>6</sup>	2,176	2,402	2,644	2,239

Capacity Ratings		Capacity	KW <sup>6</sup>	Capacity	KW <sup>6</sup>	Capacity	KW <sup>6</sup>	Capacity	KW <sup>6</sup>
Ambient Temp.	Suction Temp.								
<b>85° F</b>	-10° F	130,516	20.18	166,335	25.61	197,014	30.79	56,770	8.2
	0° F	160,674	22.69	202,758	28.73	239,740	34.38	71,237	9.3
	10° F	195,520	25.14	244,667	31.71	287,180	38.01	88,137	10.3
	20° F	233,966	27.62	291,902	34.67	340,148	41.76	106,698	11.3
	25° F	254,611	28.89	317,250	36.18	368,478	43.73	116,611	11.8
	30° F	275,946	30.20	343,923	37.69	397,695	45.78	127,005	12.3
	45° F	344,030	34.35	428,252	42.51	489,455	52.59	159,898	13.9
<b>95° F</b>	-10° F	120,335	20.64	153,385	26.10	180,512	31.50	52,150	8.3
	0° F	146,528	23.40	184,638	29.60	218,071	35.52	64,634	9.6
	10° F	177,419	26.08	221,811	32.92	260,799	39.53	79,680	10.7
	20° F	211,346	28.77	263,470	36.17	307,996	43.65	96,090	11.8
	25° F	229,699	30.13	285,999	37.81	332,960	45.81	104,908	12.4
	30° F	248,634	31.52	309,313	39.47	358,555	48.05	114,164	12.9
	45° F	307,899	35.96	383,859	44.67	439,711	55.38	143,086	14.6
<b>105° F</b>	-10° F	110,247	20.83	141,024	26.23	164,039	31.89	47,623	8.3
	0° F	131,972	23.90	166,814	30.15	196,072	36.38	58,054	9.7
	10° F	158,530	26.84	198,585	33.85	233,406	40.83	70,779	11.0
	20° F	187,808	29.76	234,559	37.44	273,979	45.38	85,218	12.2
	25° F	203,384	31.24	253,702	39.25	295,742	47.73	92,881	12.8
	30° F	219,721	32.74	273,864	41.06	317,973	50.17	100,770	13.4
	45° F	-	-	-	-	-	-	-	-
<b>115° F</b>	-10° F	100,338	20.75	129,281	25.96	147,320	31.93	43,196	8.2
	0° F	117,356	24.16	148,985	30.38	173,337	36.96	51,379	9.7
	10° F	-	-	-	-	-	-	61,765	11.2
	20° F	-	-	-	-	-	-	-	-
	25° F	-	-	-	-	-	-	-	-
	30° F	-	-	-	-	-	-	-	-
	45° F	-	-	-	-	-	-	-	-

1 - MCA (Minimum Circuit Ampacity) is calculated based on all concurrent loads applied to the circuit. (Largest load x 1.25 + 100% of all other loads including the control circuit.) Unit cooler amperages not included.  
2 - Based on 80% full at 90°F ambient.  
3 - Based on 100 feet of equivalent refrigerant line piping. (Does not include the evaporator.)  
4 - KW is for the unit.  
5 - If single circuit option is selected for DD models, some of the unit details listed below will change. Consult your local Century Representative for details.  
6 - Operating weight reflects standard refrigerant charge.  
7 - Dual units are standard with dual electrical and refrigerant circuiting. Multiple compressor units are standard with single electrical and refrigerant circuiting.  
8 - Size based on mounted optional suction line trim. Consult your local Century Representative for details.



<b>R-507 - High Temp</b>		<b>Model Numbers<sup>5,7</sup></b>			
		<b>DD16H7</b>	<b>DD18H7</b>	<b>DD20H7</b>	<b>DD24H7</b>
<b>Compressor Model Number</b>		2DA3R89KE	3DA3R10ME	3DB3R12ME	3DF3R15ME
<b>Quantity of Compressors</b>		2	2	2	2
<b>MCA<sup>1</sup> per circuit</b>	<b>208/230 V</b>	54.2	65.1	68.3	93.2
	<b>460 V</b>	28.9	34.4	36.7	49.1
<b>RLA per compressor</b>	<b>208/230 V</b>	32.0	41.0	43.6	55.8
	<b>460 V</b>	15.4	20.0	21.8	27.9
<b>Total Number of Condenser Fan Motors</b>		2	4	4	4
<b>Size of Motor (HP)</b>		1	0.5	0.5	1
<b>Diameter of Blade (in.)</b>		28	24	24	28
<b>Condenser Fan Motor Amps (each)</b>	<b>208/230 V</b>	4.6	2.2	2.2	4.6
	<b>460 V</b>	2.3	1.1	1.1	2.3
<b>Receiver Size per circuit (in.)</b>		8.625 x 36	8.625 x 42	8.625 x 42	8.625 x 60
<b>Receiver Capacity 80% Full per circuit (lbs.)<sup>2</sup></b>		56	63	63	94
<b>Unit Operating Charge per circuit (approx. lbs.)</b>	<b>Standard<sup>3</sup></b>	37	49	61	66
	<b>w/ Flood Control<sup>3</sup></b>	81	84	93	134
<b>Suction Connection per circuit - ODS (in.)<sup>8</sup></b>		1 5/8	1 5/8	2 1/8	2 1/8
<b>Liquid Line Connection per circuit - ODS (in.)</b>		7/8	7/8	7/8	1 1/8
<b>Unit Shipping Weight - Approximate (lbs.)</b>		2,604	2,944	3,320	3,458
<b>Unit Operating Weight - Approximate (lbs.)<sup>6</sup></b>		2,468	2,758	3,149	3,332

<b>Capacity Ratings</b>		<b>Capacity</b>	<b>KW<sup>6</sup></b>	<b>Capacity</b>	<b>KW<sup>6</sup></b>	<b>Capacity</b>	<b>KW<sup>6</sup></b>	<b>Capacity</b>	<b>KW<sup>6</sup></b>
<b>Ambient Temp.</b>	<b>Suction Temp.</b>								
<b>85° F</b>	-10° F	85,809	12.75	101,868	14.93	121,081	17.60	150,852	23.6
	0° F	104,910	14.14	123,419	16.53	147,759	19.51	183,435	26.0
	10° F	127,752	15.48	149,718	18.06	179,994	21.34	223,122	28.4
	20° F	153,137	16.83	179,502	19.58	215,650	23.15	267,026	30.9
	25° F	166,945	17.51	195,846	20.34	235,067	24.07	291,135	32.2
	30° F	181,346	18.22	212,976	21.11	255,348	25.00	316,363	33.5
	45° F	227,602	20.49	268,420	23.54	320,747	27.97	396,989	37.8
<b>95° F</b>	-10° F	79,569	12.99	96,414	15.39	113,226	18.19	141,357	24.3
	0° F	95,955	14.57	114,299	17.20	136,206	20.34	169,065	27.0
	10° F	116,124	16.07	137,196	18.90	164,315	22.38	203,438	29.7
	20° F	138,705	17.57	163,211	20.57	196,216	24.39	242,782	32.4
	25° F	151,048	18.33	177,650	21.40	213,306	25.40	263,955	33.8
	30° F	163,707	19.11	192,809	22.24	231,399	26.42	286,066	35.2
	45° F	204,603	21.59	241,536	24.88	289,250	29.63	357,553	39.9
<b>105° F</b>	-10° F	73,659	13.07	91,706	15.64	105,748	18.55	132,424	24.7
	0° F	87,087	14.86	105,594	17.69	124,593	20.97	154,808	27.8
	10° F	104,139	16.55	124,325	19.60	148,329	23.26	183,534	30.7
	20° F	123,846	18.23	146,629	21.45	176,091	25.48	217,540	33.7
	25° F	134,409	19.07	158,776	22.37	190,936	26.59	235,498	35.3
	30° F	145,398	19.93	171,779	23.29	206,409	27.72	254,587	36.8
	45° F	-	-	-	-	-	-	-	-
<b>115° F</b>	-10° F	68,016	12.97	87,815	15.67	98,668	18.66	124,227	24.9
	0° F	78,311	15.00	97,263	18.00	113,008	21.40	140,785	28.3
	10° F	91,890	16.92	111,418	20.16	132,023	23.97	163,399	31.6
	20° F	-	-	-	-	-	-	-	-
	25° F	-	-	-	-	-	-	-	-
	30° F	-	-	-	-	-	-	-	-
	45° F	-	-	-	-	-	-	-	-

1 - MCA (Minimum Circuit Ampacity) is calculated based on all concurrent loads applied to the circuit. (Largest load x 1.25 + 100% of all other loads including the control circuit.) Unit cooler amperes not included.

2 - Based on 80% full at 90°F ambient.

3 - Based on 100 feet of equivalent refrigerant line piping. (Does not include the evaporator.)

4 - KW is for the unit.

5 - If single circuit option is selected for DD models, some of the unit details listed below will change. Consult your local Century Representative for details.

6 - Operating weight reflects standard refrigerant charge.

7 - Dual units are standard with dual electrical and refrigerant circulating. Multiple compressor units are standard with single electrical and refrigerant circulating

8 - Size based on mounted optional suction line trim.

"-" - Consult Local Century Representative.

<b>R-507 - High Temp</b>		<b>Model Numbers<sup>5,7</sup></b>			
		<b>DD30H7</b>	<b>DD40H7</b>	<b>DD50H7</b>	<b>DD60H7</b>
<b>Compressor Model Number</b>		3DS3R17ME	4DA3R18ME	4DHNR22ME	4DJNR28ME
<b>Quantity of Compressors</b>		2	2	2	2
<b>MCA<sup>1</sup> per circuit</b>	<b>208/230 V</b>	100.7	101.9	138.5	160.5
	<b>460 V</b>	52.8	53.5	71.8	82.8
<b>RLA per compressor</b>	<b>208/230 V</b>	61.8	62.8	84.7	102.3
	<b>460 V</b>	30.9	31.4	42.4	51.2
<b>Total Number of Condenser Fan Motors</b>		4	4	6	6
<b>Size of Motor (HP)</b>		1	1	1	1
<b>Diameter of Blade (in.)</b>		28	28	28	28
<b>Condenser Fan Motor Amps (each)</b>	<b>208/230 V</b>	4.6	4.6	4.6	4.6
	<b>460 V</b>	2.3	2.3	2.3	2.3
<b>Receiver Size per circuit (in.)</b>		8.625 x 60	8.625 x 60	8.625 x 60	10.75 x 60
<b>Receiver Capacity 80% Full per circuit (lbs.)<sup>2</sup></b>		94	94	94	144
<b>Unit Operating Charge per circuit (approx. lbs.)</b>	<b>Standard<sup>3</sup></b>	72	75	88	120
	<b>w/ Flood Control<sup>3</sup></b>	134	132	161	211
<b>Suction Connection per circuit - ODS (in.)<sup>8</sup></b>		2 1/8	2 1/8	2 1/8	2 5/8
<b>Liquid Line Connection per circuit - ODS (in.)</b>		1 1/8	1 1/8	1 1/8	1 3/8
<b>Unit Shipping Weight - Approximate (lbs.)</b>		3,322	3,576	4,491	4,768
<b>Unit Operating Weight - Approximate (lbs.)<sup>6</sup></b>		3,196	3,420	4,290	4,657

<b>Capacity Ratings</b>		<b>Capacity</b>	<b>KW<sup>6</sup></b>	<b>Capacity</b>	<b>KW<sup>6</sup></b>	<b>Capacity</b>	<b>KW<sup>6</sup></b>	<b>Capacity</b>	<b>KW<sup>6</sup></b>
<b>Ambient Temp.</b>	<b>Suction Temp.</b>								
<b>85° F</b>	-10° F	166,176	25.82	168,431	26.10	218,438	35.19	261,944	40.3
	0° F	201,644	28.53	208,786	29.11	270,459	38.81	323,149	45.2
	10° F	243,819	31.23	255,010	31.95	330,299	42.35	394,660	50.1
	20° F	290,854	34.04	305,969	34.70	395,492	45.91	473,104	54.9
	25° F	316,578	35.49	332,860	36.10	429,947	47.76	515,045	57.5
	30° F	343,399	37.00	360,997	37.49	465,997	49.64	559,077	60.0
	45° F	428,820	42.00	450,162	41.88	580,754	55.68	698,931	68.2
<b>95° F</b>	-10° F	155,748	26.53	152,234	26.32	200,199	36.05	241,602	41.2
	0° F	185,726	29.57	187,527	29.73	246,294	40.09	294,488	46.7
	10° F	222,678	32.57	229,080	32.93	299,702	44.03	358,106	52.0
	20° F	264,125	35.63	274,040	36.02	358,063	47.97	427,593	57.3
	25° F	286,560	37.23	298,033	37.57	388,963	49.98	464,933	60.0
	30° F	310,291	38.86	323,148	39.11	421,298	52.02	504,180	62.7
	45° F	385,044	44.25	401,707	43.94	522,246	58.58	627,352	71.4
<b>105° F</b>	-10° F	146,008	26.98	135,982	26.17	181,467	36.53	221,445	41.7
	0° F	170,053	30.39	165,819	30.04	220,941	41.07	265,714	47.7
	10° F	200,913	33.72	201,485	33.65	267,262	45.45	319,583	53.6
	20° F	236,294	37.10	241,122	37.12	318,993	49.79	380,206	59.4
	25° F	255,508	38.84	261,614	38.84	345,631	52.01	412,617	62.3
	30° F	275,494	40.63	283,526	40.55	373,430	54.25	446,034	65.2
	45° F	-	-	-	-	-	-	-	-
<b>115° F</b>	-10° F	137,074	27.13	119,673	25.64	162,048	36.62	201,644	41.5
	0° F	154,512	30.97	143,643	30.03	194,790	41.71	236,319	48.3
	10° F	-	-	172,749	34.11	233,307	46.59	279,985	54.7
	20° F	-	-	-	-	-	-	-	-
	25° F	-	-	-	-	-	-	-	-
	30° F	-	-	-	-	-	-	-	-
	45° F	-	-	-	-	-	-	-	-

1 - MCA (Minimum Circuit Ampacity) is calculated based on all concurrent loads applied to the circuit. (Largest load x 1.25 + 100% of all other loads including the control circuit.) Unit cooler amperges not included.

2 - Based on 80% full at 90°F ambient.

3 - Based on 100 feet of equivalent refrigerant line piping. (Does not include the evaporator.)

4 - KW is for the unit.

5 - If single circuit option is selected for DD models, some of the unit details listed below will change. Consult your local Century Representative for details.

6 - Operating weight reflects standard refrigerant charge.

7 - Dual units are standard with dual electrical and refrigerant circuiting. Multiple compressor units are standard with single electrical and refrigerant circuiting

8 - Size based on mounted optional suction line trim.

"-" - Consult Local Century Representative.

<b>R-507 - High Temp</b>		<b>Model Numbers<sup>5,7</sup></b>			
		<b>DD70H7</b>	<b>DD80H7</b>	<b>DM45H7</b>	<b>DM60H7</b>
<b>Compressor Model Number</b>		6DHN35ME	6DJNR40ME	3DS3R17ME	4DA3R18ME
<b>Quantity of Compressors</b>		2	2	3	3
<b>MCA<sup>1</sup> per circuit</b>	<b>208/230 V</b>	189.0	236.3	109.9	111.1
	<b>460 V</b>	97.1	120.7	57.4	58.1
<b>RLA per compressor</b>	<b>208/230 V</b>	125.1	155.6	61.8	62.8
	<b>460 V</b>	62.6	77.8	30.9	31.4
<b>Total Number of Condenser Fan Motors</b>		6	8	6	6
<b>Size of Motor (HP)</b>		1	1	1	1
<b>Diameter of Blade (in.)</b>		28	28	28	28
<b>Condenser Fan Motor Amps (each)</b>	<b>208/230 V</b>	4.6	4.6	4.6	4.6
	<b>460 V</b>	2.3	2.3	2.3	2.3
<b>Receiver Size per circuit (in.)</b>		10.75 x 60	12.75 x 60	14 x 72	14 x 72
<b>Receiver Capacity 80% Full per circuit (lbs.)</b>		144	191	294	294
<b>Unit Operating Charge per circuit (approx. lbs.)</b>	<b>Standard<sup>3</sup></b>	133	154	304	310
	<b>w/ Flood Control<sup>3</sup></b>	236	236	447	453
<b>Suction Connection per circuit - ODS (in.)<sup>8</sup></b>		2 5/8	2 5/8	3 1/8	3 1/8
<b>Liquid Line Connection per circuit - ODS (in.)<sup>8</sup></b>		1 3/8	1 3/8	2 1/8	2 1/8
<b>Unit Shipping Weight - Approximate (lbs.)</b>		4,966	5,518	5,123	5,463
<b>Unit Operating Weight - Approximate (lbs.)<sup>6</sup></b>		4,955	5,507	5,423	5,763

<b>Capacity Ratings</b>		<b>Capacity</b>	<b>KW<sup>6</sup></b>	<b>Capacity</b>	<b>KW<sup>6</sup></b>	<b>Capacity</b>	<b>KW<sup>6</sup></b>	<b>Capacity</b>	<b>KW<sup>6</sup></b>
<b>Ambient Temp.</b>	<b>Suction Temp.</b>								
<b>85° F</b>	-10° F	332,473	49.04	390,749	61.81	250,118	38.62	253,439	39.1
	0° F	405,224	55.28	472,711	69.18	303,902	42.64	314,519	43.6
	10° F	488,822	61.26	564,956	76.59	368,858	46.63	385,162	47.8
	20° F	583,148	67.18	666,976	84.35	441,751	50.72	462,276	51.9
	25° F	633,763	70.19	720,417	88.47	481,063	52.86	503,614	53.9
	30° F	687,022	73.22	776,030	92.73	522,080	55.09	546,994	56.0
	45° F	855,368	82.88	949,843	106.86	654,632	62.38	682,739	62.5
<b>95° F</b>	-10° F	306,771	50.01	358,103	63.13	234,424	39.72	229,181	39.5
	0° F	369,277	57.00	430,993	71.33	280,058	44.23	282,439	44.6
	10° F	443,622	63.63	512,345	79.53	336,821	48.66	345,520	49.3
	20° F	526,939	70.15	601,907	88.06	400,932	53.18	414,568	53.9
	25° F	571,998	73.42	650,148	92.47	435,783	55.51	450,973	56.2
	30° F	618,627	76.74	698,509	97.12	472,159	57.93	489,095	58.5
	45° F	766,517	87.19	851,185	112.28	588,769	65.81	609,533	65.6
<b>105° F</b>	-10° F	282,047	50.25	325,007	63.82	219,660	40.43	204,842	39.3
	0° F	333,627	58.10	386,946	72.96	256,580	45.49	249,957	45.0
	10° F	397,170	65.51	457,736	82.03	303,707	50.44	303,871	50.4
	20° F	468,407	72.71	534,709	91.38	359,384	55.40	364,772	55.6
	25° F	507,403	76.29	575,684	96.22	388,922	57.98	396,577	58.1
	30° F	547,729	79.91	-	-	420,312	60.60	429,926	60.7
	45° F	-	-	-	-	-	-	-	-
<b>115° F</b>	-10° F	258,379	49.71	291,706	63.82	206,113	40.69	180,191	38.5
	0° F	297,969	58.56	341,956	74.01	233,298	46.40	216,776	45.1
	10° F	-	-	-	-	270,197	51.92	261,340	51.1
	20° F	-	-	-	-	-	-	-	-
	25° F	-	-	-	-	-	-	-	-
	30° F	-	-	-	-	-	-	-	-
	45° F	-	-	-	-	-	-	-	-

1 - MCA (Minimum Circuit Ampacity) is calculated based on all concurrent loads applied to the circuit. (Largest load x 1.25 + 100% of all other loads including the control circuit.) Unit cooler amperages not included.

2 - Based on 80% full at 90°F ambient.

3 - Based on 100 feet of equivalent refrigerant line piping. (Does not include the evaporator.)

4 - KW is for the unit.

5 - If single circuit option is selected for DD models, some of the unit details listed

6 - Operating weight reflects standard refrigerant charge.

7 - Dual units are standard with dual electrical and refrigerant circuiting. Multiple compressor units are standard with single electrical and refrigerant circuiting

8 - Size based on mounted optional suction line trim.

<b>R-507 - High Temp</b>		<b>Model Numbers<sup>5,7</sup></b>			
		<b>DM75H7</b>	<b>DM90H7</b>	<b>DM105H7</b>	<b>DM120H7</b>
<b>Compressor Model Number</b>		4DHNR22ME	4DJNR28ME	6DHNR35ME	6DJNR40ME
<b>Quantity of Compressors</b>		3	3	3	3
<b>MCA<sup>1</sup> per circuit</b>	<b>208/230 V</b>	147.7	169.7	198.2	254.7
	<b>460 V</b>	76.4	87.4	101.7	129.9
<b>RLA per compressor</b>	<b>208/230 V</b>	84.7	102.3	125.1	155.6
	<b>460 V</b>	42.4	51.2	62.6	77.8
<b>Total Number of Condenser Fan Motors</b>		8	8	8	12
<b>Size of Motor (HP)</b>		1	1	1	1
<b>Diameter of Blade (in.)</b>		28	28	28	28
<b>Condenser Fan Motor Amps (each)</b>	<b>208/230 V</b>	4.6	4.6	4.6	4.6
	<b>460 V</b>	2.3	2.3	2.3	2.3
<b>Receiver Size per circuit (in.)</b>		14 x 72	14 x 96	16 x 96	16 x 96
<b>Receiver Capacity 80% Full per circuit (lbs.)</b>		294	395	522	522
<b>Unit Operating Charge per circuit (approx. lbs.)</b>	<b>Standard<sup>3</sup></b>	381	443	616	690
	<b>w/ Flood Control<sup>3</sup></b>	571	666	992	972
<b>Suction Connection per circuit - ODS (in.)<sup>8</sup></b>		3 5/8	3 5/8	4 1/8	4 1/8
<b>Liquid Line Connection per circuit - ODS (in.)</b>		2 1/8	2 1/8	2 5/8	2 5/8
<b>Unit Shipping Weight - Approximate (lbs.)</b>		6,100	6,438	8,261	8,597
<b>Unit Operating Weight - Approximate (lbs.)<sup>6</sup></b>		6,400	6,838	8,661	9,097

<b>Capacity Ratings</b>		<b>Capacity</b>	<b>KW<sup>6</sup></b>	<b>Capacity</b>	<b>KW<sup>6</sup></b>	<b>Capacity</b>	<b>KW<sup>6</sup></b>	<b>Capacity</b>	<b>KW<sup>6</sup></b>
<b>Ambient Temp.</b>	<b>Suction Temp.</b>								
<b>85° F</b>	-10° F	327,656	51.69	391,548	59.45	501,967	72.22	591,794	92.3
	0° F	405,689	57.11	482,360	66.93	613,505	81.38	720,249	103.1
	10° F	495,448	62.43	587,166	74.27	744,744	90.10	864,172	113.9
	20° F	592,614	67.81	702,675	81.71	891,386	98.71	1,023,753	125.1
	25° F	644,921	70.54	764,708	85.52	970,446	103.06	1,109,126	131.0
	30° F	698,995	73.36	828,821	89.43	1,052,677	107.50	1,198,565	137.0
	45° F	870,058	82.48	1,032,091	101.94	1,316,941	121.47	1,475,864	157.3
<b>95° F</b>	-10° F	300,298	52.97	361,006	60.81	463,064	73.80	542,722	94.5
	0° F	369,130	59.06	439,584	69.09	559,319	84.11	655,873	106.5
	10° F	449,553	64.95	532,257	77.14	675,680	93.86	785,160	118.4
	20° F	537,095	70.86	634,856	85.17	805,712	103.37	927,486	130.8
	25° F	583,445	73.87	689,098	89.29	876,397	108.12	1,002,795	137.2
	30° F	631,110	76.97	745,902	93.47	949,883	112.94	1,081,489	143.8
	45° F	782,218	86.83	925,147	106.72	1,183,779	128.10	1,327,119	165.7
<b>105° F</b>	-10° F	271,962	53.70	330,980	61.40	425,625	74.29	492,950	95.6
	0° F	331,412	60.51	396,296	70.58	505,550	85.90	589,406	109.1
	10° F	400,893	67.08	475,589	79.42	604,474	96.82	703,120	122.4
	20° F	477,777	73.62	564,286	88.16	717,498	107.37	825,641	136.0
	25° F	518,447	76.91	611,128	92.59	779,162	112.59	891,377	143.0
	30° F	560,145	80.28	660,265	97.08	841,932	117.92	958,561	150.3
	45° F	-	-	-	-	-	-	-	-
<b>115° F</b>	-10° F	243,071	53.83	301,256	61.15	390,044	73.59	442,837	95.8
	0° F	291,812	61.47	352,471	71.36	451,743	86.71	521,925	110.8
	10° F	349,961	68.78	416,485	81.11	532,210	98.92	-	-
	20° F	-	-	-	-	-	-	-	-
	25° F	-	-	-	-	-	-	-	-
	30° F	-	-	-	-	-	-	-	-
	45° F	-	-	-	-	-	-	-	-

1 - MCA (Minimum Circuit Ampacity) is calculated based on all concurrent loads applied to the circuit. (Largest load x 1.25 + 100% of all other loads including the control circuit.) Unit cooler amperges not included.

2 - Based on 80% full at 90°F ambient.

3 - Based on 100 feet of equivalent refrigerant line piping. (Does not include the evaporator.)

4 - KW is for the unit.

5 - If single circuit option is selected for DD models, some of the unit details listed below will change. Consult your local Century Representative for details.

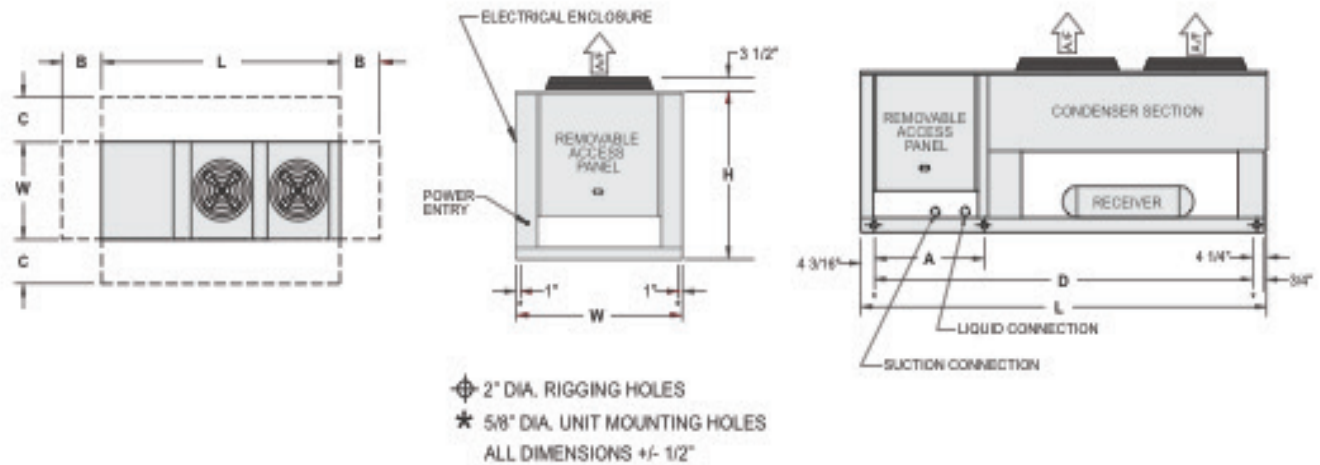
6 - Operating weight reflects standard refrigerant charge.

7 - Dual units are standard with dual electrical and refrigerant circuiting. Multiple compressor units are standard with single electrical and refrigerant circuiting

8 - Size based on mounted optional suction line trim.

"-" - Consult Local Century Representative.

# DS Dimensions'



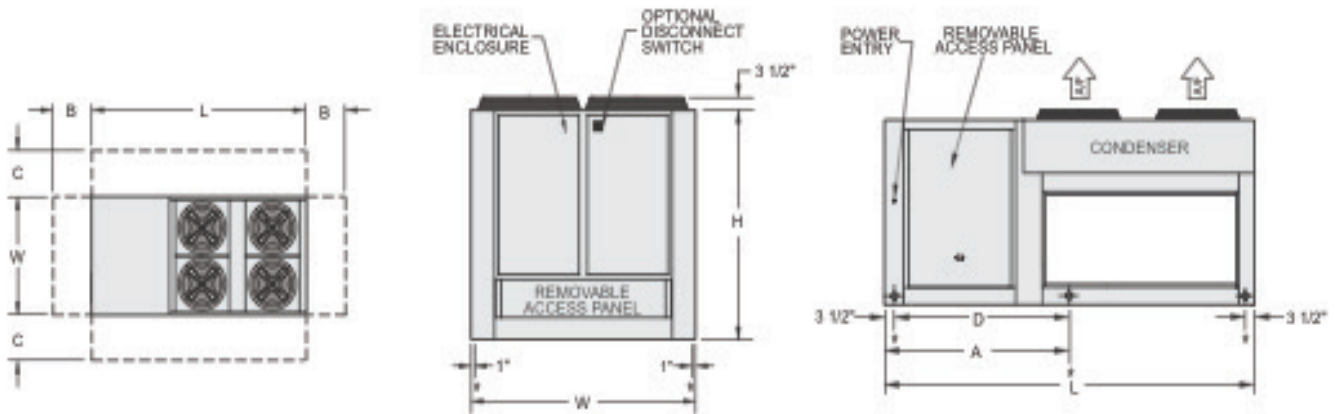
## High Temp Models

Unit Model	L	W	H	A	B	C	D
DS05H	80 11/16	43	44 1/2	-	60	43	72 1/4
DS08H	86 11/16	48	44 1/2	-	60	48	78 1/4
DS09H	86 11/16	48	44 1/2	-	60	48	78 1/4
DS10H	110 11/16	43	44 1/2	29 1/8	60	43	102 1/4
DS12H	122 11/16	48	44 1/2	33 1/8	60	48	114 1/4
DS15H	122 11/16	48	44 1/2	32 1/8	60	48	114 1/4
DS20H	122 11/16	48	44 1/2	32 1/8	60	48	114 1/4
DS25H	150 11/16	48	44 1/2	33 1/8	60	48	142 1/4
DS30H	150 11/16	48	63	33 1/8	60	48	142 1/4
DS35H	186 11/16	48	63	33 1/8	60	48	178 1/4
DS40H	186 11/16	48	63	33 1/8	60	48	178 1/4

## Low Temp Models

Unit Model	L	W	H	A	B	C	D
DS03L	54 11/16	32 1/2	39	-	60	33	46 1/8
DS04L	54 11/16	32 1/2	39	-	60	33	46 1/8
DS06L	80 11/16	43	44 1/2	-	60	43	72 1/4
DS07L	80 11/16	43	44 1/2	-	60	43	72 1/4
DS08L	80 11/16	43	44 1/2	-	60	43	72 1/4
DS09L	86 11/16	48	44 1/2	-	60	48	78 1/4
DS10L	86 11/16	48	44 1/2	-	60	48	78 1/4
DS11L	86 11/16	48	44 1/2	-	60	48	78 1/4
DS15L	110 11/16	43	44 1/2	29 1/8	60	43	102 1/4
DS22L	122 11/16	48	44 1/2	32 1/8	60	48	114 1/4
DS27L	150 11/16	48	44 1/2	33 1/8	60	48	142 1/4
DS30L	150 11/16	48	63	33 1/8	60	48	142 1/4

# DD Dimensions'



⊕ 2 1/2" DIA. RIGGING HOLES  
 \* 5/8" DIA. UNIT MOUNTING HOLES  
 ALL DIMENSIONS +/- 1/2"

OPTIONAL DOOR MOUNTED DISCONNECT  
 UP TO 200 AMPS ONLY  
 CONNECTION LOCATIONS VARY

## High Temp Models

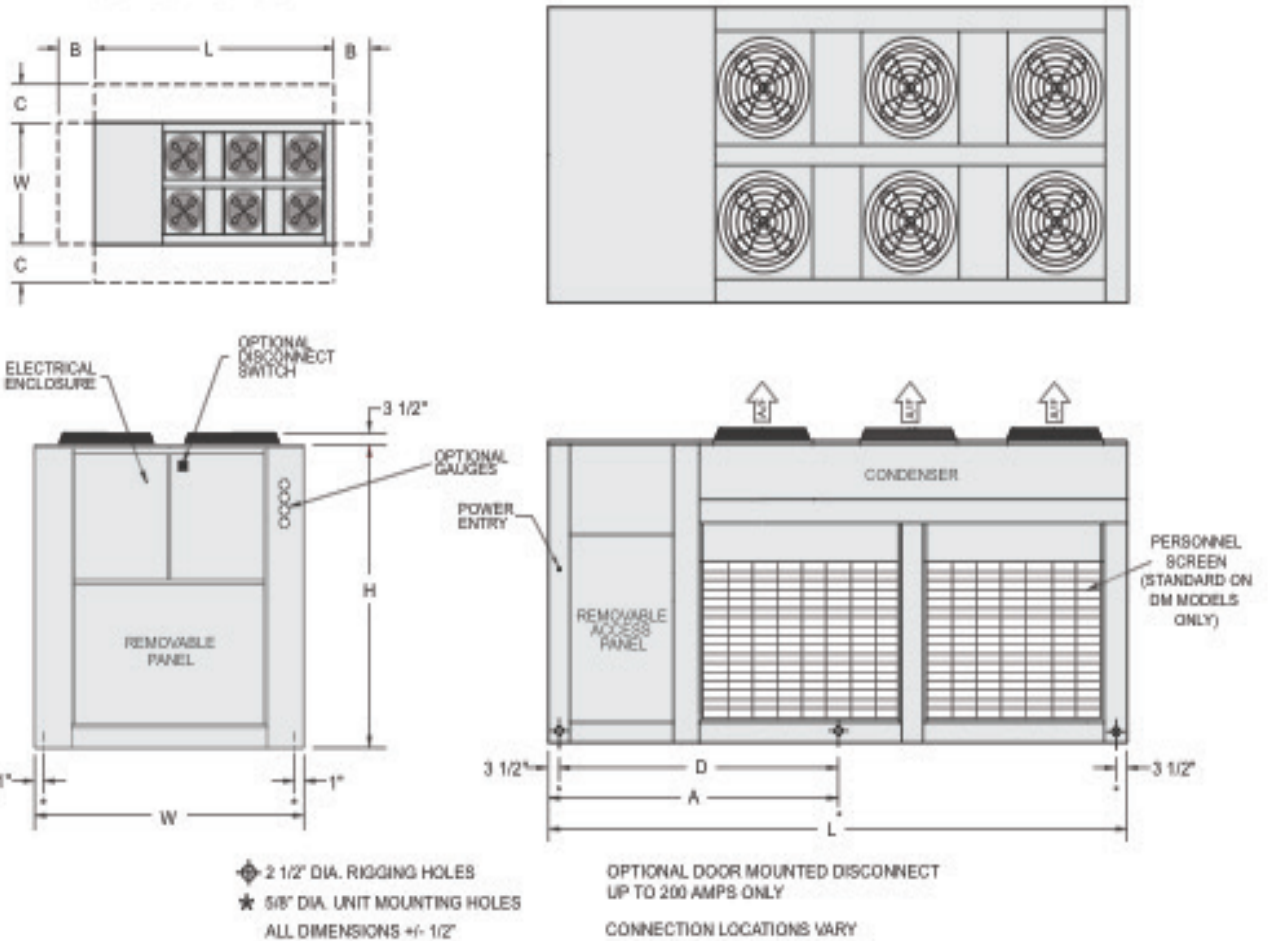
Unit Model	L	W	H	A	B	C	D
DD10H	103 1/4	67 3/4	63	-	60	67 3/4	-
DD16H	103 1/4	67 3/4	63	-	60	67 3/4	-
DD18H	138 3/4	67 3/4	63	69 1/8	60	67 3/4	65 5/8
DD20H	138 3/4	67 3/4	63	69 1/8	60	67 3/4	65 5/8
DD24H	138 3/4	67 3/4	63	69 1/8	60	67 3/4	65 5/8
DD30H	138 3/4	67 3/4	63	69 1/8	60	67 3/4	65 5/8
DD40H	162 1/4	67 3/4	63	82 1/8	60	67 3/4	78 5/8
DD50H	190	88	63	90	60	88	86 1/2
DD60H	190	88	63	90	60	88	86 1/2
DD70H	190	88	63	90	60	88	86 1/2
DD80H	190	88	63	90	60	88	86 1/2

## Low Temp Models

Unit Model	L	W	H	A	B	C	D
DD12L	103 1/4	67 3/4	63	-	60	67 3/4	-
DD14L	103 1/4	67 3/4	63	-	60	67 3/4	-
DD16L	103 1/4	67 3/4	63	-	60	67 3/4	-
DD18L	103 1/4	67 3/4	63	-	60	67 3/4	-
DD20L	138 3/4	67 3/4	63	69 1/8	60	67 3/4	65 5/8
DD22L	138 3/4	67 3/4	63	69 1/8	60	67 3/4	65 5/8
DD30L	138 3/4	67 3/4	63	69 1/8	60	67 3/4	65 5/8
DD44L	138 3/4	67 3/4	63	69 1/8	60	67 3/4	65 5/8
DD54L	162 1/4	67 3/4	63	82 1/8	60	67 3/4	78 5/8
DD60L	190	88	63	90	60	88	86.5



# DM Dimensions<sup>1</sup>



## High Temp Models

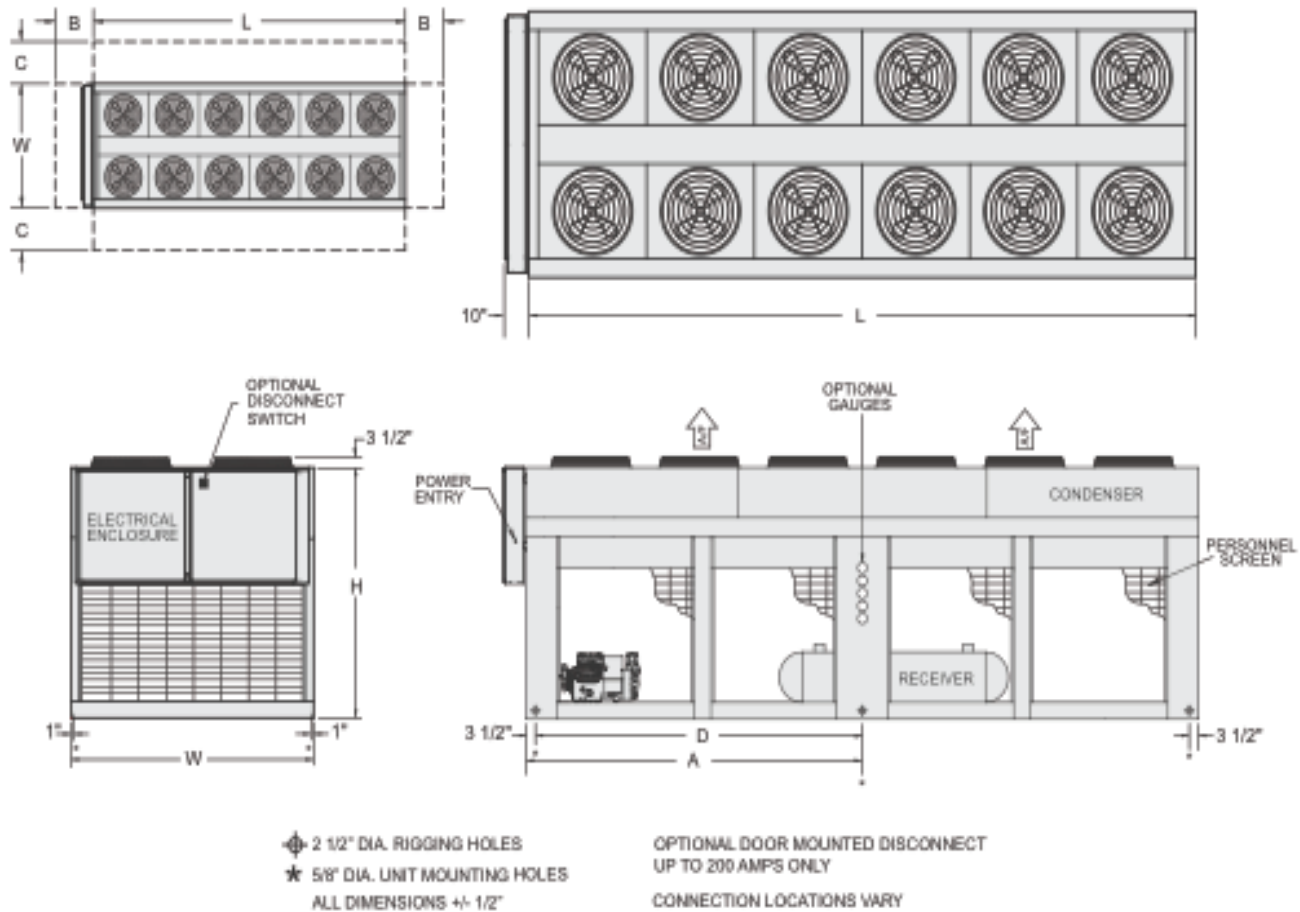
Unit Model	L	W	H	A	B	C	D
DM45H	190	88	90	95	60	88	91 1/2
DM60H	190	88	90	95	60	88	91 1/2
DM75H	190	88	90	95	60	88	91 1/2

## Low Temp Models

Unit Model	L	W	H	A	B	C	D
DM45L	190	88	90	95	60	88	91 1/2
DM66L	190	88	90	95	60	88	91 1/2
DM81L	190	88	90	95	60	88	91 1/2
DM90L	180	88	90	95	60	88	91 1/2

<sup>1</sup>All dimensions in inches

# DM Dimensions'



## High Temp Models

Unit Model	L	W	H	A	B	C	D
DM90H	180	88	90	95	60	88	91 1/2
DM105H	264	96	90	90	60	88	86 1/2
DM120H	264	96	90	90	60	88	86 1/2

\*All dimensions in inches



# Notes

# Notes

## Product Benefits:

### **Adaptability-**

Century systems go where others can't. Your Century system is engineered to meet your specific project application and job requirements in-house with no need for modification in the field. With Century's extensive inventory of components, your order can be shipped when you need it.

### **Durability-**

Your Century system will be built with heavy gauge construction and the highest quality components to optimize efficiency for the life expectancy of your system. Century systems are engineered for **Time Tested Toughness.**

### **Serviceability-**

Your Century system will have easily accessible components and appropriate fin spacing to allow for easy maintenance. Century systems are engineered to be serviceable with a minimal amount of OEM components. A large inventory of replacement parts ensures professional, reliable service throughout the lifetime of your Century system.

### **Reduced Total Cost of Ownership-**

The adaptability, durability, and serviceability of your Century system results in reduced installation costs, maintenance costs, and utility costs throughout the lifetime of your system. Century systems are designed for customers requiring long-term, dependable systems.

The current refrigeration market...

#### **Commercial Refrigeration**

- Shipped from stock
- No modifications available; one size fits all equipment
- Lightweight construction
- Convenience store and restaurant applications
- Options/kits shipped loose for field assembly/installation
- Cheaper, lower quality materials

#### **Industrial Refrigeration**

- Central refrigeration plant
- Dedicated mechanical rooms
- Stationary Engineer requirements
- PLC (Microprocessor) controls
- Steel construction
- Requires extensive piping in the field

*now presenting...*

## **Comdustrial™ Refrigeration**

***Comdustrial™ Refrigeration Systems are the ideal balance of the commercial and industrial refrigeration markets.***

- Industrial quality equipment in Commercial capacity ranges
- Built-to-order refrigeration systems with exceptional lead times
- Professionally represented by systems oriented Sales Representatives
- Systems based approach to your application
- Project specific submittal packages and drawings
- Quality materials for long-term equipment life



4492 Hunt St - Pryor, OK 74361 - (918) 825-7222 - Fax (800) 264-5329

**[www.century-refrigeration.com](http://www.century-refrigeration.com)**

We reserve the right to change or revise specifications and product design in connection with any feature of our products. Such changes do not entitle the buyer to corresponding changes, improvements, additions or replacement for equipment previously sold or shipped.

Bulletin# C-TC-D-0418