

CYLINDER TYPE SIGHT FLOW INDICATORS

CONSTRUCTION: BRASS, CARBON STEEL OR 316 STAINLESS STEEL

PLAIN OR DRIP TUBE

Furnished with Protective Outer Shield

- CRN – All Provinces



MODEL EFI 805-S
(Plain)



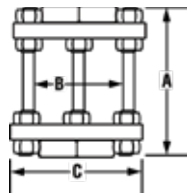
MODEL EFI 805-SD
(Drip Tube)



MODEL EFI 805-SL
Available in pipe sizes 1/8" through 2" and in lengths up to 48"
Graduated cylinders also available

NPT Conn.	Dimensions in Inches			Approx. Weight (lbs.)	Pressure Rating (PSI)
	A	B	C		
1/8	4-1/2	1-3/4	4	2	150
1/4	4-1/2	1-3/4	4	2	150
3/8	4-1/2	1-3/4	4	2	150
1/2	4-1/2	1-3/4	4	2	150
3/4	4-1/2	1-3/4	4	2	150
1	4-1/2	2	4-1/2	3	150
1-1/2	4-3/4	2-1/2	5-1/4	5	120
2	5-1/2	3	5-3/4	8	100

"A" Dimension ± 1/8"

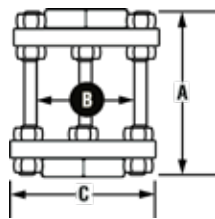


For 805-SL units, consult Ernst Flow Industries for shield availability.

BALL ACTION

With PTFE or Neoprene Ball

Furnished with Protective Outer Shield



MODEL EFI 1728-NB 805-S

NPT Conn.	Dimensions in Inches			Approx. Weight (lbs.)	Pressure Rating (PSI)
	A	B	C		
1/8	4-1/2	1-3/4	4	2	150
1/4	4-1/2	1-3/4	4	2	150
3/8	4-1/2	1-3/4	4	2	150
1/2	4-1/2	1-3/4	4	2	150
3/4	4-1/2	1-3/4	4	2	150
1	4-1/2	2	4-1/2	3	150
1-1/2	4-3/4	2-1/2	5-1/4	5	120
2	5-1/2	3	5-3/4	8	100

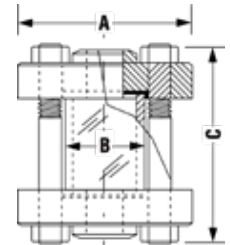
"A" Dimension ± 1/8"

PLAIN

Note: Also available in PVC Construction



MODEL EFI 17280



NPT Conn.	Dimensions in Inches			Pressure Rating (PSI)
	A	B	C	
1/2	3-1/2	1-1/2	2-1/4	150
3/4	3-7/8	1-1/2	2-1/4	150
1	4-1/4	2	3	150
1-1/4	4-5/8	2-1/4	3-3/8	135
1-1/2	5	2-1/2	3-7/8	112
2	6	3-1/2	5-3/4	70
2-1/2	7	4	7	75
3	7-1/2	4	7	75
4	9	5-1/2	9-1/4	43

"C" Dimension ± 1/8"

PLAIN OR DRIP TUBE

Construction: Carbon Steel, 316 Stainless Steel

Furnished with Protective Outer Shield

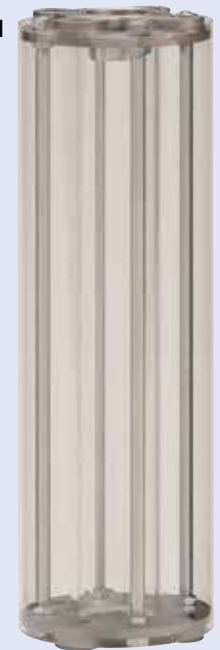
- CRN – All Provinces



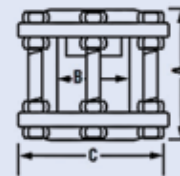
MODEL EFI 830 F
(Plain)



MODEL EFI 830-FD
(Drip Tube)



MODEL EFI 830-FL
Available in pipe sizes 1/2" through 6" and in lengths up to 48". Graduated cylinders also available



For 830-SL units, consult Ernst Flow Industries for shield availability.

Flange Size	Dimensions in Inches			Approx. Weight (lbs.)	Pressure Rating (PSI)
	A	B	C		
1/2	3-7/8	1	3-1/2	3	150
3/4	3-7/8	1-1/4	3-7/8	3	150
1	4	1-3/4	4-1/2	3	150
1-1/2	4	2-1/2	5-1/4	4	120
2	4-3/4	3	6-1/4	6	100
3	5-3/8	4	7-3/4	15	100
4	7-1/2	5	9-1/4	27	70
6	10-3/8	7	11	47	45

"A" Dimension ± 1/8"