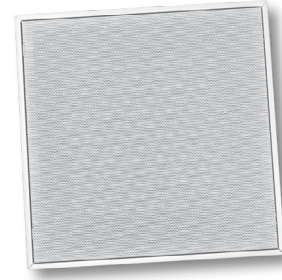


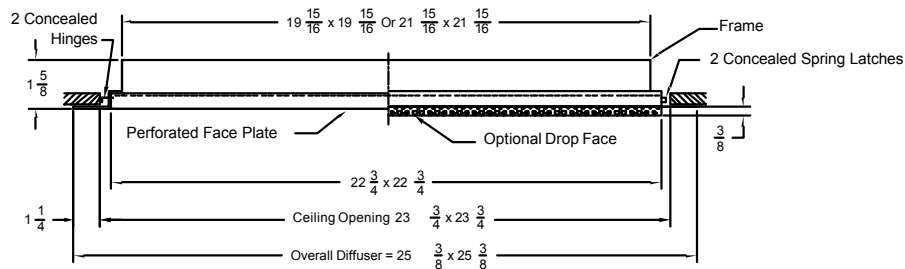
MODEL 7550R-F/7650R-F

Model 7550R-F and 7650R-F are perforated return filter diffusers designed to be installed in standard T-Bar ceiling grids. The hinged perforated face allows access to the filter (by others). These units are available with a 1" or 2" filter rack.

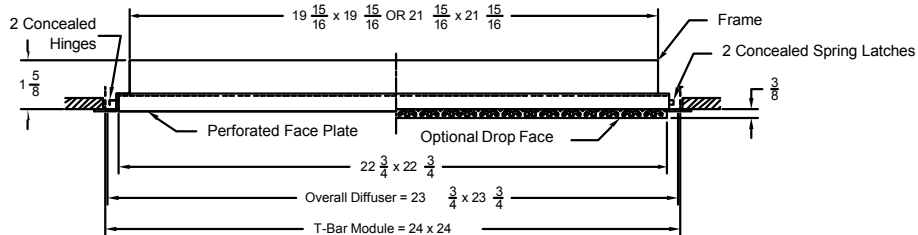


- Steel construction
- Hinged face allows access to the filter (by others)

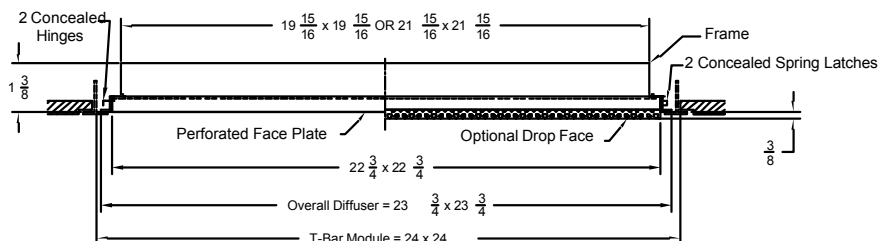
- **Models:** • 7550R-1 F (Surface Mount - Filter Back)
- 7650R-1 F (Surface Mount - Filter Back)



- **Models:** • 7550R-6 F (Lay in T-Bar - Filter Back)
- 7650R-6 F (Lay in T-Bar - Filter Back)



- **Model:** • 7550R-8 F (Tegular T-Bar Filter Back)
- 7650R-8 F (Tegular T-Bar Filter Back)



SERIES 7550R-F/7650R-F SPECIFICATIONS

EXHAUST/RETURN — FILTER GRILLES — PERFORATED FACE

7550R-1 F	Surface Mounted
7650R-1 F	Surface Mounted
7550R-6 F	T-bar Lay-in
7650R-6 F	T-bar Lay-in
7550R-8 F	Tegular T-bar
7650R-8 F	Tegular T-bar

- Air Inlets shall be steel model 7550R-F or 7650R-F perforated face filter return diffusers manufactured by METALAIRE. Units shall consist of aluminum 51% free area perforated face with 3/16" diameter perforated holes on 1/4" staggered centers. Units shall include a hinged face and integral frame designed to accept a 1" or 2" thick filter. Face shall be secured in place with tension spring clips.
- The units shall be the size and quantity as outlined in the plans and specifications.
- Units shall be designed to integrate into the specified ceiling system.

Performance Specification

The manufacturer shall provide published performance data. Data shall be tested in accordance to ANSI/ASHRAE Standard 70-2006.

Paint Specification

Process shall be anodic electro-deposition using an anodic acrylic paint. Units shall undergo pre-treatment including a pressurized spray stage using an alkaline cleaner and de-ionized water rinse.

7550R-F MODEL NUMBER SPECIFICATION PERFORATED CEILING DIFFUSER — SQUARE NECK

Model		Available Neck	Module	Available Finishes	
7550R-1 F	Surface Mount	20 x 20	24 x 24	Standard	
7650R-1 F	Surface Mount	22 x 22		01	White
				Optional	
				02	Satin Silver
				03	Black
				22	Black BP/ White Face
				28	Custom Color
				Available Accessories	
				OBD	Steel Opposed Blade Damper
				OBDA	Aluminum Opposed Blade Damper
				Available Options	
				2FF	2" Filter Rack

Model		Available Neck	Module	Available Finishes	
7550R-6 F	T-bar Lay-in	20 x 20	24 x 24	Standard	
7650R-6 F	T-bar Lay-in	22 x 22		01	White
				Optional	
				02	Satin Silver
				03	Black
				22	Black BP/ White Face
				28	Custom Color
				Available Accessories	
				OBD	Steel Opposed Blade Damper
				OBDA	Aluminum Opposed Blade Damper
				Available Options	
				2FF	2" Filter Rack

SERIES 7550R-F/7650R-F PERFORMANCE DATA

MODEL 7550R-F/7650R-F

Neck Size	fpm Neck Velocity	300	400	500	600	700	800	900	1000
	Ps	.008	.015	.020	.030	.050	.060	.080	.080
6 x 6	CFM	75	100	120	150	175	200	225	250
8 x 8	CFM	130	175	220	265	310	350	400	445
10 x 10	CFM	210	275	345	415	485	555	625	695
12 X 12	CFM	300	400	500	600	700	800	900	1000
14 x 14	CFM	410	545	680	815	950	1090	1225	1360
16 x 16	CFM	530	710	885	1060	1240	1415	1600	1770
22 x 22	CFM	1010	1345	1680	2015	2350	2690	3025	3360

PERFORMANCE NOTES FOR SERIES 7550R-F/7650R-F

All data is tested in accordance with ANSI/ASHRAE 70-2006.

DEFINITION OF UNITS

CFM Cubic Feet per Minute (air)

fpm Velocity of air stream in Feet per Minute

Pv Velocity pressure (inches of water column)

Pt Total pressure (inches of water column)

Ps Static pressure = Pt-Pv (inches of water column)

Throw* Non-isothermal horizontal throw (supply air temperature 15°F colder than average room temperature); values are for 150, 100 and 50fpm velocities

Throw Isothermal throw (supply air temperature the same as average room temperature); values are for 150, 100 and 50fpm velocities

NC Noise criterion, sound pressure level NC ratings are based on sound power level (Lw) re: 10⁻¹² watts minus a 10dB room attenuation in all octave bands