

# CYLINDER TYPE SIGHT FLOW INDICATORS

## PLAIN

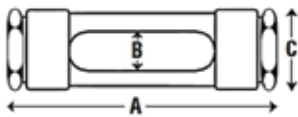
**Construction: Brass, Carbon Steel, 316 Stainless Steel**

**Pressure Rating 150 PSI**

- CRN – All Provinces

NPT Conn.	Dimensions in Inches			Approx. Weight (lbs.)
	A	B	C	
1/4	4-7/8	5/8	1-1/2	1
3/8	4-7/8	5/8	1-1/2	1
1/2	6	3/4	1-3/4	2
3/4	6-5/8	1	2	2-1/2
1	6-5/8	1	2	2-1/2
1-1/4	9-1/8	1-3/8	2-7/8	6
1-1/2	9-1/8	1-3/8	2-7/8	6

"A" Dimension ± 1/8"



**Note: All materials of construction furnished with bronze body as standard. Optional 316 Stainless Steel body available upon request.**

**Available with Neoprene or PTFE Seal Gaskets.**

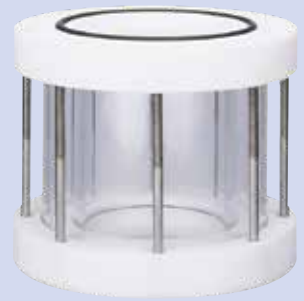
**MODEL EFI 4000-S**



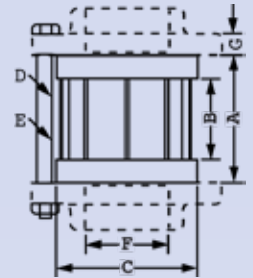
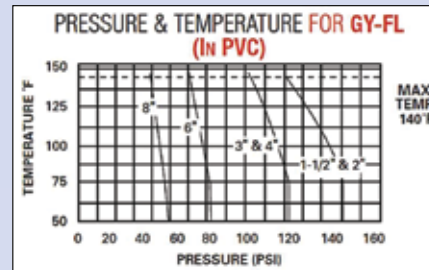
## "WAFER" INDICATOR

Model No. EFI GY-FI flow indicators utilize double wall construction and are used on flanged piping systems handling highly corrosive or ultra-pure liquids compatible with borosilicate glass. **They cannot be used with hydrofluoric acid or sodium hydroxide as they will etch the borosilicate cylinder wall.**

**PVC ends are standard.** PP, CPVC, PTFE and Kynar® ends also available. Fluorocarbon seals are standard. These indicators will fit 1-1/2" through 8" smooth face standard companion flanges. Two flange O-ring seals are supplied, therefore, other gasketing materials are not required. The inner cylinder is borosilicate for maximum corrosion resistance and the outer cylinder is high impact acrylic, which acts as a protective shield against external impacts.



**MODEL EFI GY-FL**  
(All Bolting Stainless Steel)

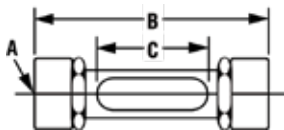


## OIL LINE TYPE / MALE OR FEMALE CONN.

**Construction: Brass**

**Pressure Rating: Size 1 through 4 - 100 PSI**  
**Size 5 through 8 - 50 PSI**

Size No.	Dimensions in Inches			Glass O.D.
	A	B	C	
1	1/8	2-7/16	1-3/16	5/8
2	1/4	3	1-3/16	5/8
3	3/8	3	1-3/16	5/8
4	1/2	4-1/2	2-1/4	5/8
5	3/4	4-1/2	2	7/8
6	1	5	2-3/8	1
7	1-1/4	5-1/4	2-3/8	1-1/4
8	1-1/2	5-1/4	2-3/8	1-1/2



**MODEL EFI 265**

## PLAIN

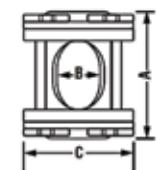
**Construction: Steel or 316 Stainless Steel**

Flanged Conn.	Dimensions in Inches			Approx. Weight (lbs.)	Pressure Rating (PSI)
	A	B	C		
1/2	6-1/8	13/16	3-1/2	5	150
3/4	6-3/8	1-1/16	3-7/8	8	150
1	6-3/8	1-1/16	4-1/4	11	150
1-1/2	6-3/4	1-5/8	5	16	150
2	7-5/8	2	6	23	120
2-1/2	7-7/8	2-3/8	7	31	100
3	8-1/8	2-3/4	7-1/2	33	100

"A" Dimension ± 1/8"

**Note: All materials of construction furnished with iron body as standard. Optional 316 Stainless Steel body available upon request.**

**Available with Neoprene or PTFE Seal.**



**MODEL EFI 860-F**

## POLYVINYL CHLORIDE (PVC)

**FOR HIGHLY CORROSIVE FLUIDS**

**Pressure Rating:**  
**(1/2" through 2" NPT) 112 PSI @ 140°F**  
**(3" NPT) 92 PSI @ 140°F**

These sight glasses have a heavy duty borosilicate inner cylinder with a heavy duty outer cylinder of Acrylic surrounding and protecting it. This combination with Fluorocarbon seals offers excellent visibility and maximum chemical resistance.

**Connecting bolts and nuts are stainless steel.**



**MODEL EFI GY**

NPT Conn.	Dimensions in Inches			
	A	B	C	D
1/2	2-1/4	4-3/4	1-1/2	2-1/2
3/4	2-1/4	4-3/4	1-1/2	2-1/2
1	2-1/4	5-1/4	1-3/4	3
1-1/4	2-1/2	5-7/8	2-3/8	3-1/2
1-1/2	2-1/2	5-7/8	2-3/8	3-1/2
2	3-1/8	7-3/8	2-7/8	4
3	3-3/8	8-3/8	4-3/8	5-1/2

Polypropylene Ends Also Available  
**Pressure Rating 50 PSI @ 185°F**

