

LOW PRESSURE

CONSTRUCTION: BRASS, CARBON STEEL, STAINLESS STEEL

FKM (VITON™) SEAL GASKETS AS STANDARD

Brass Retaining Ring furnished



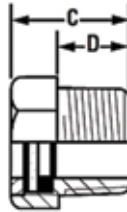
MODEL EFI 540



**MODEL EFI 540S
(With Reflector)**

NPT Conn.	Dimensions in Inches				Pressure Rating (PSI)	
	A	B	C	D	Brass	St. Steel / Carbon Steel
3/8	7/8	15/32	7/8	1/2	100	300
1/2	1	19/32	7/8	1/2	90	275
3/4	1-1/8	11/16	1	9/16	80	250
1	1-3/8	15/16	1-1/8	11/16	60	200
1-1/4	1-7/8	1-1/4	1-1/4	11/16	35	150
1-1/2	2-1/8	1-1/2	1-1/4	11/16	25	100
2	2-1/2	1-1/2	1-1/4	11/16	25	N/A

*NOTES: 2" size not available in Carbon Steel or Stainless Steel.
Spanner wrench available...consult Ernst Flow Industries.*



LOW PRESSURE

CONSTRUCTION: STEEL

Pressure Rating: 125 PSI @ 250°F



**MODEL EFI 1260BR
(With Ball and Reflector)**

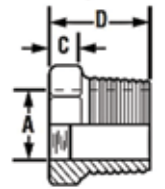
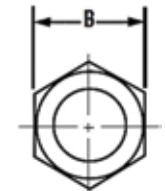


MODEL EFI 1260

An aluminum ball is placed between the glass sight and the stainless steel reflector, which provides maximum visible observation of the liquid level.

NPT Conn.	Dimensions in Inches			
	A	B	C	D
1/4	11/32	5/8	3/16	5/8
3/8	7/16	3/4	7/32	23/32
1/2	9/16	15/16	7/32	25/32
3/4	3/4	1-1/16	5/16	15/16
1	15/16	1-3/8	5/16	1-1/16
1-1/4	1-3/16	1-3/4	13/32	1-7/32
1-1/2	1-7/16	2	13/32	1-7/32
2	1-7/8	2-1/2	13/32	1-9/32

*NOTE: Clear glass is fused to steel.
Not available in MODEL EFI 1260BR



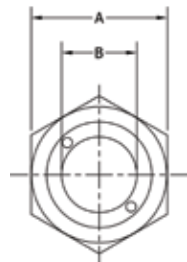
MEDIUM PRESSURE

CONSTRUCTION: CARBON STEEL, STAINLESS STEEL

NEOPRENE SEAL GASKET AS STANDARD

Pressure Rating: (1" through 2" NPT) 150 PSI
(3" NPT) 175 PSI
250 PSI with tempered glass

NOTE: Quartz available for high temperature applications... consult with Ernst Flow Industries.



MODEL EFI S5400

*Brass Retaining Ring furnished.
Stainless Steel Ring available.*

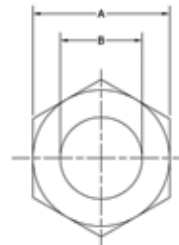
NPT Conn.	Dimensions in Inches	
	A	B
1	1-1/2	5/8
1-1/4	1-3/4	7/8
1-1/2	2	1-1/16
2	2-1/2	1-5/16
2-1/2	3	1-3/5
3	3-1/2	2-3/8

HIGH PRESSURE EFI SAFEPORT™ FUSED GLASS WINDOW

CONSTRUCTION: CARBON STEEL, STAINLESS STEEL, AND HC (UNS N10276/N06022/J30002)

Pressures up to 2000 PSIG.

- One piece construction
- No gaskets or seals
- Available with material test reports



MODEL EFI-HPSP

*More Impact, Pressure, Stress and Shock Resistant
Excellent Temperature and Corrosion Resistance*

NPT Conn.	Dimensions in Inches	
	A	B
1	1-3/8	3/4
1-1/4	1-3/4	15/16
1-1/2	2	1-1/8
2	2-1/2	1-1/2
3	3-5/8	2-1/8