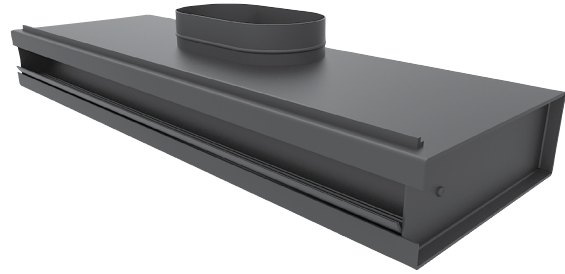


MODEL PHPS-J

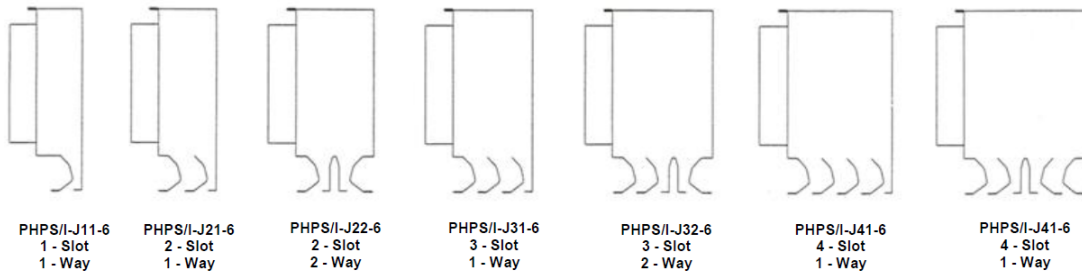


The PHPS-J is a high capacity diffuser with fixed aerodynamic control vanes. The fixed vanes provide a full range of air flow. It is an excellent choice for variable volume systems. The pattern controllers are integral with the diffuser and can be fixed in a one way or two way air pattern.

- Corrosion resistant steel construction
- Lower flanges provide tile support as an integral part of the diffuser housing
- Available in 1 to 4 slots
- Available lengths 24", 36", 48" and 60"
- Optional insulation on PHPSI-J

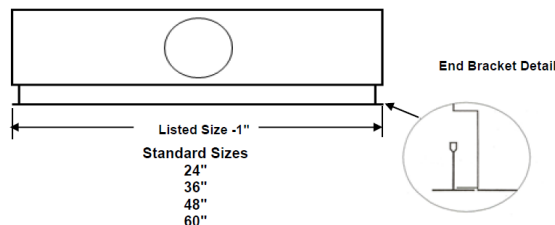
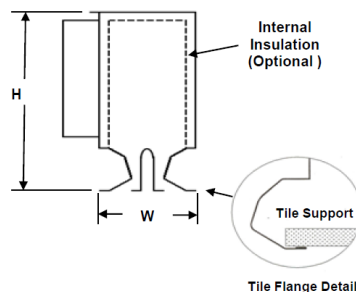
PHPS-I-J11-6	One Slot 1 Way Non-insulated
PHPS-I-J21-6	Two Slot 1 Way Non-insulated
PHPS-I-J22-6	Two Slot 2 Way Non-insulated
PHPS-I-J31-6	Three Slot 1 Way Non-insulated
PHPS-I-J32-6	Three Slot 2 Way Non-insulated
PHPS-I-J41-6	Four Slot 1 Way Non-insulated
PHPS-I-J42-6	Four Slot 2 Way Non-insulated

PHPSI-I-J11-6	One Slot 1 Way Insulated
PHPSI-I-J21-6	Two Slot 1 Way Insulated
PHPSI-I-J22-6	Two Slot 2 Way Insulated
PHPSI-I-J31-6	Three Slot 1 Way Insulated
PHPSI-I-J32-6	Three Slot 2 Way Insulated
PHPSI-I-J41-6	Four Slot 1 Way Insulated
PHPSI-I-J42-6	Four Slot 2 Way Insulated



Model	W
PHPS/I-J11	1 13/16
PHPS/I-J21	3 1/16
PHPS/I-J22	4 1/8
PHPS/I-J31	4 5/16
PHPS/I-J32	5 3/8
PHPS/I-J41	5 9/16
PHPS/I-J42	6 5/8

Inlet Diameter	H
5, 6	9 1/4
7, 8, 9	12 7/16
10	14



SERIES PHPS-J SPECIFICATIONS

- Diffusers shall be available with 1 to 4 slots. Discharge deflectors shall be integral with the diffuser housing and be fixed in one way or two way blow directions. Standard nominal lengths shall be 24", 36", 48" or 60". Units shall be constructed of corrosion resistant steel.
- The inlet collar must have at least 1 1/2" depth for duct connection. The standard finish will be white.
- The lower flange of the deflectors shall provide support for adjacent ceiling tile without additional ceiling grid tee bars. Lower flanges shall be constructed of a double metal thickness for rigidity.
- Optional internal insulation shall be available. Factory furnished plaster frames and inlet dampers shall be available as optional accessories.

Performance Specification

The manufacturer shall provide published performance data. Data shall be tested in accordance to ANSI/ASHRAE Standard 70-2006.

PHP-J MODEL NUMBER SPECIFICATION

PLENUM SLOT DIFFUSER

Model -Non-insulated	# of Slots	Slot Lengths	Inlets	Available Finishes	
PHPS-J11-6	1	24"	No Inlet	Standard	
PHPS-J21-6	2	36"	5" Oval	25	White Tee / Black Border
PHPS-J22-6	3	48"	6" Oval	Optional	
PHPS-J31-6	4	60"	7" Oval	26	All White
PHPS-J32-6			8" Oval	27	All Black
PHPS-J41-6			9" Oval		
PHPS-J42-6			10" Oval		

Model - Insulated	# of Slots	Slot Lengths	Inlets	Available Accessories	
PHPSI-J11-6	1	24"	No Inlet	ID	Inlet Damper
PHPSI-J21-6	2	36"	5" Oval	PHP-J-TBPF	T-bar Plaster Frame
PHPSI-J22-6	3	48"	6" Oval	EI	External Insulation
PHPSI-J31-6	4	60"	7" Oval	CC	Closed Cell Insulation
PHPSI-J32-6			8" Oval		
PHPSI-J41-6			9" Oval		
PHPSI-J42-6			10" Oval		

SERIES PHCS PERFORMANCE DATA MODEL PHP-J

2' Length	1 Slot 1-Way	CFM	20	40	60	80	100
		Ps	.010	.030	.060	.100	.150
		Throw	11	17	22	25	27
		NC	<20	<20	<20	22	27
	2 Slot 1-Way	CFM	40	80	120	160	200
		Ps	.010	.030	.070	.120	.180
		Throw	14	21	27	31	34
		NC	<20	<20	<20	26	31
	2 Slot 2-Way	CFM	40	80	120	160	200
		Ps	.010	.030	.060	.090	.140
		Throw	11	17	22	25	27
		NC	<20	<20	<20	22	27
	3 Slot 1-Way	CFM	60	120	180	240	300
		Ps	.010	.030	.060	.120	.190
		Throw	17	27	35	40	43
		NC	<20	<20	<20	26	31
3 Slot 2-Way	CFM	60	120	180	240	300	
	Ps	.010	.030	.060	.100	.150	
	Throw 1	11	17	22	25	27	
	Throw 2	14	21	27	31	34	
	NC	<20	<20	<20	26	32	
4 Slot 2-Way	CFM	80	160	240	320	400	
	Ps	.010	.030	.060	.100	.150	
	Throw	14	21	27	31	34	
	NC	<20	<20	21	29	36	

4' Length	1 Slot 1-Way	CFM	40	80	120	160	200
		Ps	.010	.030	.080	.140	.200
		Throw	11	17	22	25	27
		NC	<20	<20	<20	26	32
	2 Slot 1-Way	CFM	80	160	240	320	400
		Ps	.010	.040	.080	.140	.220
		Throw	14	21	27	31	34
		NC	<20	<20	21	30	37
	2 Slot 2-Way	CFM	80	160	240	320	400
		Ps	.010	.030	.060	.090	.150
		Throw	11	17	22	25	27
		NC	<20	<20	<20	26	32

4' Length	3 Slot 1-Way	CFM	120	240	360	480	600
		Ps	.010	.030	.060	.120	.190
		Throw	17	27	35	40	43
		NC	<20	<20	21	30	37
	3 Slot 2-Way	CFM	120	240	360	480	600
		Ps	.010	.030	.060	.100	.160
		Throw 1	11	17	22	25	27
		Throw 2	14	21	27	31	34
		NC	<20	<20	22	31	38
	4 Slot 2-Way	CFM	160	320	480	640	800
Ps		.010	.030	.060	.110	.170	
Throw		14	21	27	31	34	
NC		<20	<20	26	34	42	

5' Length	1 Slot 1-Way	CFM	50	100	150	200	250
		Ps	.010	.040	.090	.150	.240
		Throw	11	17	22	25	27
		NC	<20	<20	21	30	37
	2 Slot 1-Way	CFM	100	200	300	400	500
		Ps	.010	.040	.060	.140	.220
		Throw	14	21	27	31	34
		NC	<20	<20	24	35	43
	2 Slot 2-Way	CFM	100	200	300	400	500
		Ps	.010	.030	.060	.110	.170
		Throw	11	17	22	25	27
		NC	<20	<20	21	30	37
	3 Slot 1-Way	CFM	150	300	450	600	750
		Ps	.010	.030	.070	.130	.210
		Throw	17	27	35	40	43
		NC	<20	<20	24	35	43
	3 Slot 2-Way	CFM	150	300	450	600	750
		Ps	.010	.030	.060	.110	.180
Throw 1		11	17	22	25	27	
Throw 2		14	21	27	31	34	
NC		<20	<20	25	36	44	
4 Slot 2-Way	CFM	200	400	600	800	1000	
	Ps	.010	.030	.070	.130	.200	
	Throw	14	21	27	31	34	
	NC	<20	<20	32	40	48	

PLENUM SLOT
DIFFUSERS

PLENUM DIFFUSERS WITH
HIGH CAPACITY FIXED
PATTERN CONTROLLERS

PHPS-J