

# SIGHT FLOW INDICATORS & LIGHTING

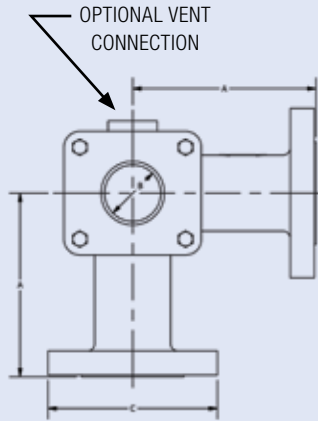
## EFI - L90 / PLAIN OR DRIP TUBE

Pressure Rating: Class 150 ASME

BLACK TYPE: NEOPRENE SEAL GASKETS AS STANDARD



MODEL  
EFI - L90 (Plain)  
EFI - L90 D (Drip)



### L90 sight flow indicators

- Same take out as long-radius elbow
- Save space and weight by reducing number of connections
- Available with or without drip indicator
- Drip tube used for low flow to move flow into view
- Vent connection: mount instrumentation or remove gas pockets
- Threaded and flanged vents available
- CRN - All Provinces
- API 614

Dimensions in Inches				
Flange Size	A	B	C	Approx. Weight (lbs.)
1	5	1-1/4	4-1/4	12
1-1/2	6	2	5	19
2	6-1/2	2	6	32
3	7-3/4	3-3/16	7-1/2	65
4	9	4-3/8	10	79
6	11-1/2	6-3/4	11	155

## EFI TANKLITE™



### FEATURES:

- Rated for over 10 years of continuous duty... no need to turn on and off
- Consume less than one amp...so they stay cool enough to touch even when on for long periods of time
- Illuminate with cool light, keeping product from "baking on" the window or changing the process properties
- Require no maintenance: Need to clean it? Unclip and wash... no need to disconnect
- Install or retrofit in 2 minutes or less on any tank window 4" (100mm) or larger (for view thru) any sight flow indicator 1/2" and larger (for back lighting)

### TANKLITE™ & FLOWLITE™ Ratings:

- Explosion-Proof Power Supply
  - Class I, Div. 1, Groups B, C, D T4
  - Class II, Div. 1, Groups E, F, G T4
- Intrinsically safe output (Shielded cable)
- NEMA 4X rating (Anodized Aluminum Housing, 316SS optional)



### Additional FLOWLITE™ Ratings:

- ATEX
  - Power Supply II 2(2) G Ex d [ia] IIC T6
  - Light Source II 2 G Ex ia IIC T4



## EFI TANKLITE™

Part Number: TL — 6L — 01 — 01 — 2C

### RING SIZE

- 4 = 4" LIGHT
- 6 = 6" LIGHT

### LIGHT HOUSING

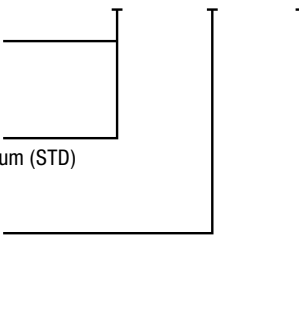
- L = Anodized Aluminum (STD)
- S = Stainless Steel

### POWER SUPPLY

- 01 = 120 VAC
- 02 = 240 VAC

### TOTAL CORD LENGTH

- 01 = 8" / 2.5M (Standard)
- 02 = 24" / 7.5M
- 03 = 40" / 12.5M
- 04 = 56" / 17.5M
- 05 = 72" / 22.5M



### BRACKET OPTION

- 1 = For retainer thickness over .500" to .875" (12.7mm to 22.2mm)
- 2 = For retainer thickness over .875" to 1.25" (22.2mm to 31.8mm)
- 9 = Special

### BRACKET MATERIAL

- C = Plated Steel Bracket Set (Standard)
- S = All Stainless Steel Bracket Set

## EFI FLOWLITE™

Part Number: FL — L — 01 — 01

### MATERIAL CODE

- L = Aluminum Light Body
- S = Stainless Light Body

### POWER SUPPLY

- 01 = 120 VAC
- 02 = 240 VAC

### TOTAL CORD LENGTH

- 01 = 8" / 2.5M (Standard)
- 02 = 24" / 7.5M
- 03 = 40" / 12.5M
- 04 = 56" / 17.5M
- 05 = 72" / 22.5M

