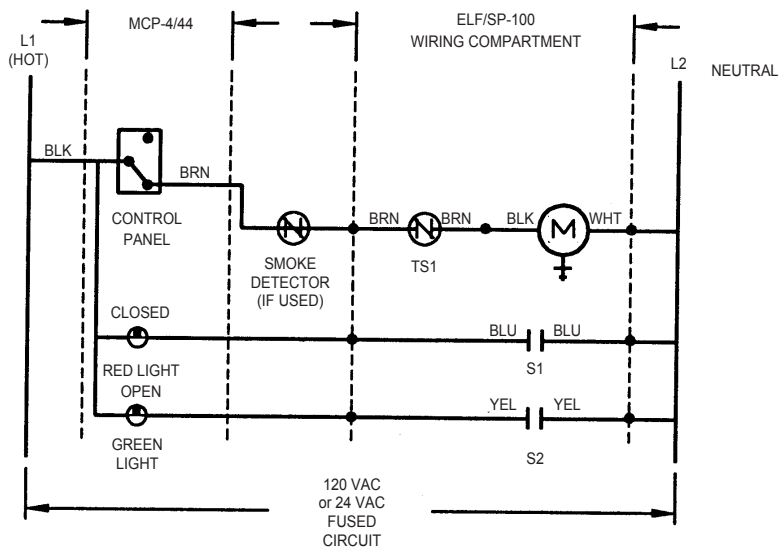


MCP4 AND MCP44 CONTROL PANELS

APPLICATION

The MCP4/44 is a ship loose single control panel with a momentary push button switch and lights for use with smoke and fire/smoke dampers. The lights are a red light for closed damper and a green light for open damper. The lights make the MCP4/44 available for remote mounting. The MCP4 is for use in 120VAC systems while the MCP44 is for use in 24VAC systems.

- M - Electric Actuator or EP Switch
- TS1 - Primary Temp. Sensor
- S1 - Damper Position Indication Switch, closed when damper is closed.
- S2 - Damper Position Indication Switch, closed when damper is open.



MCP4/44

RUSKIN®

3900 Dr. Greaves Rd.
Kansas City, MO 64030
(816) 761-7476
FAX (816) 765-8955
www.ruskin.com