

MCP1, MCP14, MCP2 AND MCP24 CONTROL PANELS

APPLICATION

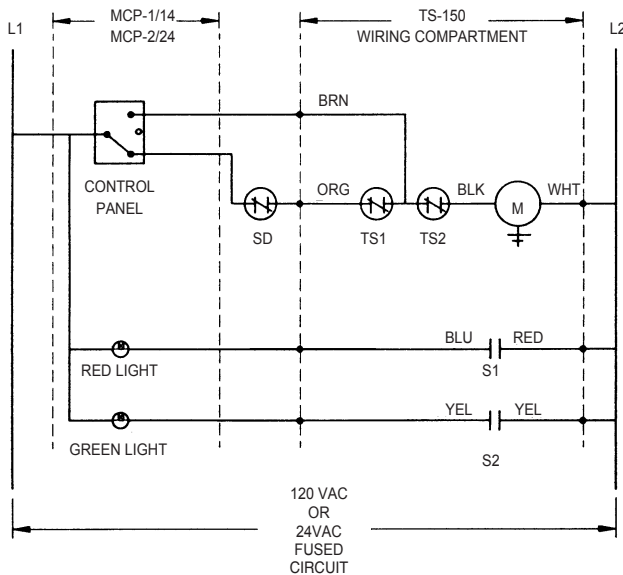
The MCP1/14 and MCP2/24 are ship loose single control panels for use with in dynamic smoke management systems on fire/smoke dampers equipped with the TS150. The MCP1/14 utilizes a toggle type switch and the MCP2/24 utilizes a removable key type switch. These control panels also have a red light for closed damper and a green light for open damper. The MCP1 and 2 are for use in 120VAC systems while the MCP14 and 24 are for use in 24VAC systems.

The toggle switch and key switch are 3 position switches with the following options:

OPEN – The fire/smoke damper remains open until TS1 sensor is closed by elevated temperatures.

CLOSED – The fire/smoke damper closes and remains closed regardless of any sensor signal.

REOPEN (OVERRIDE) – The fire/smoke damper reopens manually after TS1 closes damper and remains open until TS2 temperature sensor signals the damper to close.



- M - Electric Actuator or EP Switch
- TS1 - Primary Temp. Sensor
- TS2 - High Limit Temp. Sensor
- S1 - Damper Position Indication Switch, closed when damper is closed.
- S2 - Damper Position Indication Switch, closed when damper is open.
- SD - Smoke Detector (optional, by others)



MCP1/14



MCP2/24

RUSKIN®

3900 Dr. Greaves Rd.
Kansas City, MO 64030
(816) 761-7476
FAX (816) 765-8955
www.ruskin.com