

# METALAIRE™

## FORMATIONS®

**MODEL FAL**  
Formation Linear Diffuser



Model satisfies the demanding engineering and architectural criteria, providing superior air distribution performance.

**MODEL FALC**  
Formation Linear Diffuser w/ Concealed Mount



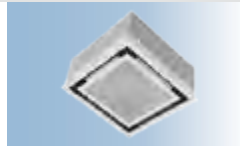
Model satisfies the demanding engineering & architectural criteria, providing superior air distribution performance with concealed mounting.

**MODEL FTS**  
Formations Tee System



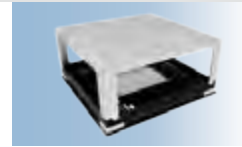
Formations Tee system (FTS) includes model FAL and a plenum. A perfect choice for acoustical ceiling applications.

**MODEL FAI**  
Formations Integra (Supply/Return)



Laying in an acoustical tee bar or hard ceiling, your specified ceiling material becomes the face of the Integra diffuser.

**MODEL FAIH**  
High Capacity Architectural Return



A high-capacity return that features the integrated look of the FAI return, but adds a cube core center to increase the capacity of the

## FORMATIONS® ACCESSORIES

**MODEL UP/UIP FAL**  
Universal Plenum Standard Mount Formations



Model is designed to connect model FAL to the ducted supply or return system. The overall height of the plenum is 10 1/2".

**MODEL UP/UIP FALC**  
Universal Plenum for Concealed Mount Formations



Model is designed to connect model FALC to the ducted supply or return system. Available with 1/2" insulation.

**MODEL FAM/FMC/FMCC**  
Formations Mitered Corner



Mitered Corner for Formations® Mitered corner only for Formations architectural linear air distribution systems.

**MODEL FAR**  
Formations Light Shield



Model for formation series architectural linear diffusers, designed to block light that can be seen from the diffuser opening.

**MODEL FODR**  
Face Operated Damper



## LINEAR SLOT DIFFUSERS

**MODEL 6600**  
Supply/Return Linear Slot Diffuser



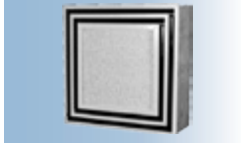
The 6600 series aluminum linear slot diffusers are an excellent choice for continuous linear applications, providing a clean appearance and easy installation.

**MODEL 6600SP/6610SP**  
Supply/Return Linear Slot Diffuser for Spiral Pipe



The aluminum supply/return linear slot diffusers are designed to integrate into exposed spiral duct systems.

**MODEL 6600SQ**  
Square Architectural Slot Diffuser



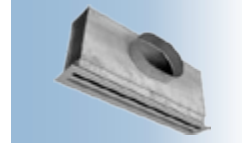
Model provides great operation flexibility. The supply units are shipped with individually adjustable pattern controllers.

**MODEL 6675TZ**  
Linear Slot Diffusers for Architectural Ceilings



Offered in three frame styles, model is compatible for use with Armstrong® TechZone™ and USG Logix™ Architectural Ceiling Systems.

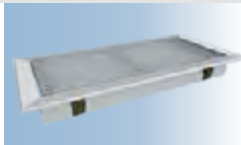
**MODEL UP/UIP 6600**  
Universal Plenum



Model is an easily installed, economical accessory to the 6600 Linear Slot Diffuser.

## LINEAR BAR GRILLES

**MODEL 2000**  
Extruded Aluminum Linear Bar Grille



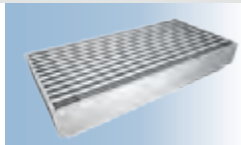
Models are engineered for supply/return air distribution in heating, cooling & ventilating applications. 1" border, 7/32" bars on 1/2" centers.

**MODEL 2100**  
Extruded Aluminum Linear Bar Grille



Models are engineered for supply/return air distribution in heating, cooling & ventilating applications. 1/2" border, 7/32" bars on 1/2" centers.

**MODEL 2200**  
Extruded Aluminum Linear Bar Grille



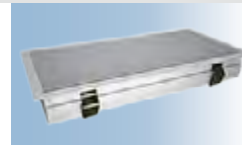
Models are engineered for supply/return air distribution in heating, cooling & ventilating applications. 3/16" border, 7/32" blades on 1/2" centers. Floor only.

**MODEL 2300**  
Extruded Aluminum Linear Bar Grille



Models are engineered for supply/return air distribution in heating, cooling & ventilating applications. 1" border, 1/8" blades on 1/4" centers.

**MODEL 2400**  
Extruded Aluminum



Models are engineered for supply/return air distribution in heating, cooling & ventilating applications. 1/2" border, 1/8" blades on 1/4" centers.