

ROSENBERG USA



Rosenberg USA, Inc.

1010 Forsyth Ave.
Indian Trail, North Carolina 28079

Phone: 704.893.0883
Fax: 704.882.0755

www.rosenbergusa.com
sales@rosenbergusa.com

Rosenberg USA

Delivering the best in air movement



Rosenberg USA offers buyers and specifiers one of the world's largest and best selections of fans - Rosenberg, Ecofit and ETRI brand fans. The company's broad product line includes radial fans with backward-curved or forward-curved impellers, large and small axial fans (25-mm to 1000-mm), and single and double inlet blowers.

Applications for Rosenberg products can be found in HVAC evaporators, condensers, chillers and data center cooling, as well as industrial and portable air conditioning; in cooling for variable frequency drives (VFD), wind power generators and power converters, solar inverters, uninterruptable power supplies (UPS), and other industrial transformers,

heat sinks, fan coils, telecom rack equipment; in air handling units and fan filter units (FFU); and in railway, marine, military and avionics equipment.

Rosenberg USA, located just outside Charlotte, N.C., brings the efforts of more than 1,000 dedicated employees with state-of-the-art R&D and manufacturing from around the world to U.S. OEMs and end-users. We are uniquely qualified to meet your air movement needs with standard products and custom motor and fan development.

Rosenberg delivers the best in air movement solutions.

Air is our element.

We offer a wide range of intelligent solutions to move it more efficiently.



Rosenberg® Fans And Blowers *Highest quality and reliability*

- Centrifugal fans with forward and backward curved impellers
- Low-noise axial fans with winglet tips
- Applications include electronics cooling, filter technology, air handling, air conditioning and refrigeration
- DIN EN ISO 9001 Certified
- Available in both AC and EC models
- Compliant with all applicable US and EU standards



Rosenberg fans, blowers and motorized impellers provide exceptional air movement performance. Rosenberg fans are available in AC and EC (electronically commutated) models with power input ranging from 500 W to 6.5 KW depending on the model. Designed without external motors, belts or external shafts, Rosenberg fans save space while running cooler and quieter.



The Rosenberg product line includes:

- AXIAL FANS
- BACKWARD CURVED FANS
- SINGLE INLET BLOWERS
- DOUBLE INLET BLOWERS

Rosenberg maintains a wide selection of standard fans in stock, but also offers application engineering expertise to produce fans that match your unique needs including special finishes, voltages or frequencies.

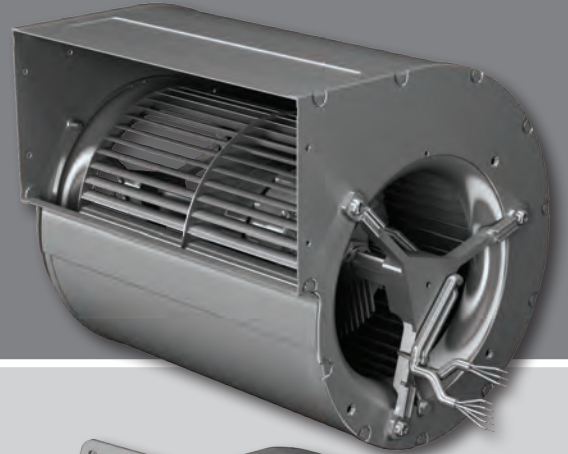
Airflow (at free air)

Axial fans: 500 to 19,500 CFM

Backward curved fans: 600 to 11,000 CFM

Forward curved blowers: up to 7,000 CFM





Ecofit® Fans and Blowers

Low noise, high-efficiency air movement

- Single-phase AC and EC models, three-phase AC models
- Brushless DC
- Axial fans with standard or basket grill, round or square rings
- Double and single-inlet centrifugal fans with forward-curved impellers
- Space-saving backward curved centrifugal fans
- ISO 9001 certified production facilities
- Compliant with all applicable US and EU standards

Ecofit offers a wide range of AC, DC, and electronically commutated (EC) motors and motorized impellers as part of the Rosenberg Air Movement Group. Ecofit fans are quiet and powerful. With no external shaft, no belt, and no external motor, they are perfect in low-noise and compact applications that require high-efficiency air movement, often within demanding environments.

The Ecofit product line includes:

- BACKWARD CURVED CENTRIFUGAL FANS
- SINGLE INLET CENTRIFUGAL FANS
- DOUBLE INLET CENTRIFUGAL FANS
- AXIAL FANS

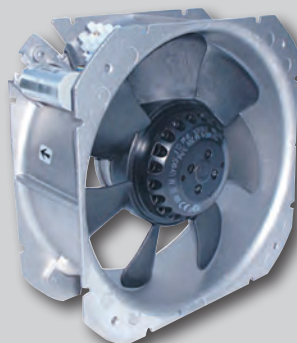
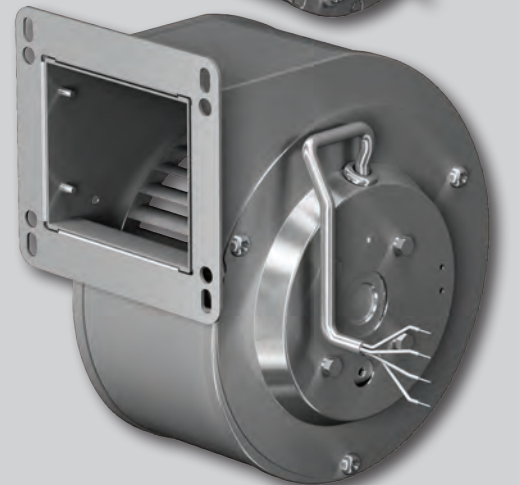
Standard products offer immediate airflow solutions, but Ecofit also develops customized products with airflow, power, rotational speeds, noise level, overall dimensions and finish specifically defined to meet our customers requirements.

Airflow (at free air)

Axial fans: up to 2,400 CFM

Backward curved fans: up to 1,200 CFM

Forward curved blowers: up to 900 CFM



ETRI® Fans
A tradition of excellence in AC and DC fans

- Uncompromising quality and performance standards
- Wide range of design options
- Various voltages, speeds, bearing systems
- Choice of termination configurations
- ISO 9001 certified production facilities
- Compliant with all applicable US and EU standards

ETRI is part of the Rosenberg family of companies with a tradition of using innovative designs and materials to produce high quality fans and blowers at its ISO 9001 certified factories. ETRI brand fans have the longest life expectancy of any comparable product and have long been recognized as performance leaders in equipment cooling, avionics and railway applications.

ETRI fans are CE and UL-R certified.

The ETRI product line includes:

- AC AXIAL FANS
- DC AXIAL FANS
- 400 Hz AC and 28 VDC FANS
- DC CENTRIFUGAL FANS
- AC CENTRIFUGAL FANS

ETRI's AC and DC air movers are cooling and protecting the most sophisticated of electronic packages and offer the design engineer a wide range of design options to meet specific application needs.

Airflow (at free air)

- Axial fans: 5 to 250 CFM
- 400 Hz Axial: 5 to 2,000 CFM
- Railway: up to 2000 CFM





[®] **ECO FIT**
ETRI
rosenberg
THE AIR MOVEMENT GROUP

