

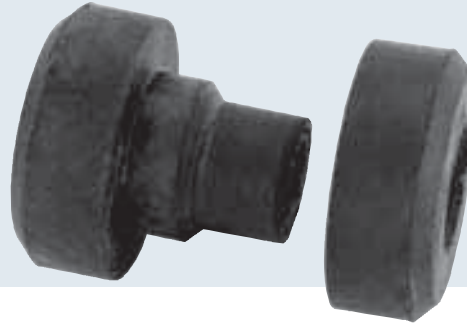
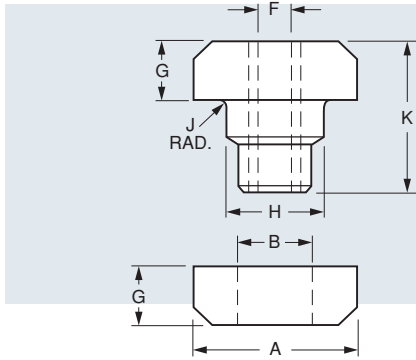


Bolt Mounts – Ring and Bushing Type

vibrationmounts.com Phone: 516.328.3662 Fax: 516.328.3365

- **MATERIAL:** Isolator – Neoprene
Sleeve – Carbon Steel,
Rust-Resistant Coating

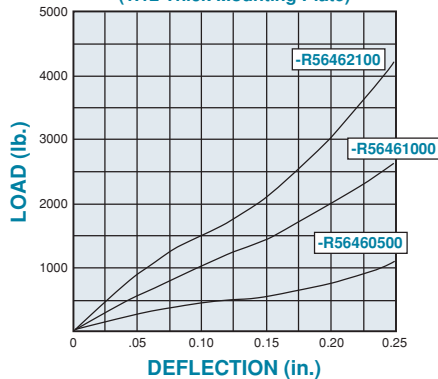
- **FULL REBOUND PROTECTION** • **STRUCTURE-BORNE NOISE ATTENUATION**
- **RESISTS OILS, OZONE AND MOST SOLVENTS**
- **FAIL-SAFE DESIGN WITH SNUBBING WASHER**



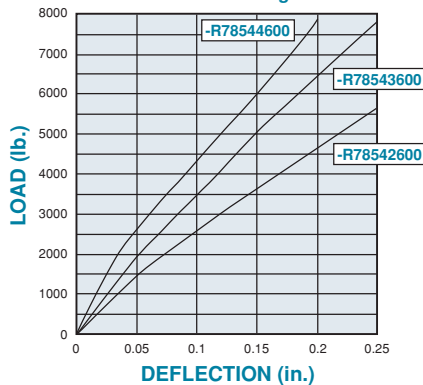
New

SECTION 7

AXIAL LOAD vs. DEFLECTION
(1.12 Thick Mounting Plate)



AXIAL LOAD vs. DEFLECTION
1.25 Thick Mounting Plate



APPLICATIONS

- HIGHWAY AND OFF-HIGHWAY VEHICLES: ISOLATE ENGINES, CABS, RADIATORS, BATTERY BOXES, FUEL TANKS AND ACCESSORIES
- MOTOR GENERATORS AND COMPRESSORS
- PUMPS AND CENTRIFUGES
- MARINE EQUIPMENT AND POWER PLANTS
- HVAC EQUIPMENT
- PORTABLE EQUIPMENT AND MACHINERY
- OFFICE EQUIPMENT/COMPUTERS

TEMPERATURE RANGE: -20°F to +180°F (-28.9°C to +82.2°C)

Catalog Number	A in. (mm)	B in. (mm)	F in. (mm)	G in. (mm)	H in. (mm)	K in. (mm)	J in. (mm)	Durometer	Axial Static Load, Max. lb. (N)	Radial Static Load, Max. lb. (N)	Mounting Plate Thickness in. (mm)	Natural Frequency (Max. Load) Hz (ref)
V10Z82-R56460500								.12 (3)	500 (2224)	200 (889)	1.12 (28.4)	10
V10Z82-R56461000	3.5 (88.9)	1.41 (35.8)	.93 (23.6)	1 (25.4)	2.3 (58.4)	2.88 (73.2)	60 (4448)		400 (1779)			
V10Z82-R56462100							70 (9341)		900 (4003)			
V10Z82-R78542600							60 (11565)		1000 (4448)	1.25 (31.8)		
V10Z82-R78543600	4.88 (124)	1.86 (47.2)	1.063 (27)	1.25 (31.8)	2.55 (64.8)	3.38 (85.9)	68 (16013)		1450 (6449)			
V10Z82-R78544600							74 (20461)		1900 (8451)			

NOTE: For Snubbing Washers and Installation Configurations see next page.