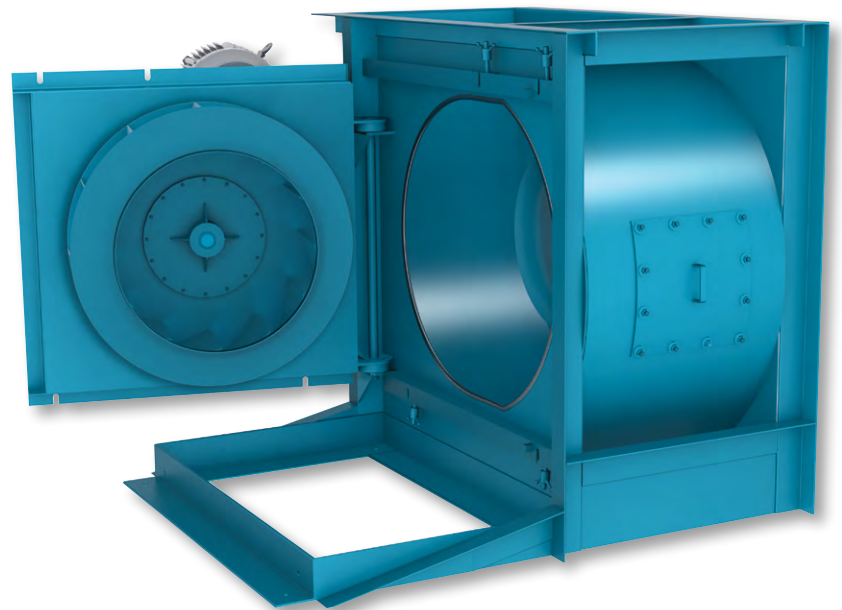


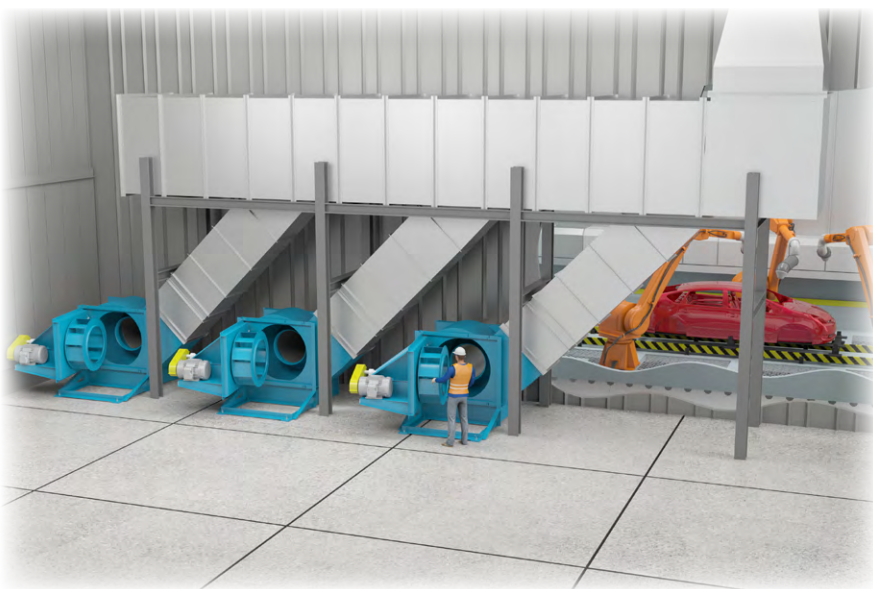


INDUSTRIAL PROCESS AND  
COMMERCIAL VENTILATION SYSTEMS

# EASY ACCESS INDUSTRIAL EXHAUST FANS



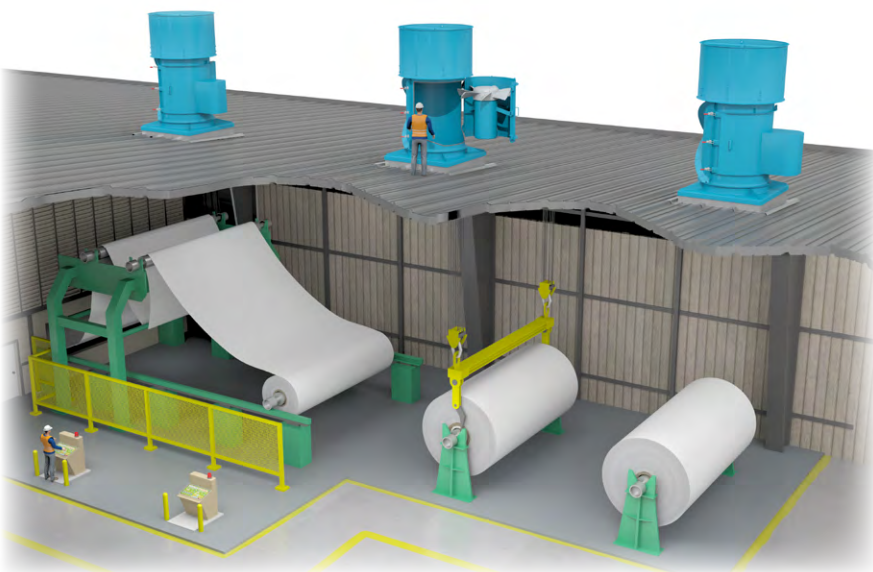
# EASY ACCESS FANS



Automotive Paintbooth with Swingouts

## Common Applications

- Paint Finishing Systems
- Pulp & Paper Production
- Heat Recovery Steam Generators
- Potash Production
- Slurry Prep Facilities
- Steel & Aluminum Foundries



Paper Mill with Axial Swingouts

## Swingout Fans

Swingout fans by Twin City Fan & Blower are the best choice when frequent cleaning, without removal of ductwork, is necessary. Swingout construction is also ideal for systems when short down times are essential. The design provides full access to the wheel and inner casing. The entire wheel/shaft/bearing assembly is mounted on a large swingout door providing easy access to all components outside of the airstream. Since the inlet cone pivots with the door, fan performance is preserved. Twin City Fan & Blower swingout fans can handle the toughest exhaust applications and are available in axial, tubular centrifugal, mixed flow and scroll type centrifugal fans. Swingout construction is available for vertical mounting only.

## Swingout Configurations

Centrifugal: Arrangements 4S, 9ST and 9SS  
Axial and Inline Centrifugal: Arrangements 4 and 9

## Clamshell Fans

Clamshell fans by Twin City Fan & Blower offer many of the advantages of swingout fans at a reduced cost. One or two clamshell style doors swing open to provide accessibility to the internal components of the fan for maintenance or cleaning without removal of ductwork. Heavy-duty hinges, positive locking latches and full gasketing provide a complete seal when doors are closed. An access door provides access to the bearings. For the double door configuration, one of the two access doors is wide enough for wheel removal. Removable bearing covers are available as standard. Clamshell construction is available for inline centrifugal and axial fans and is typically used in vertical mount applications, due to the weight of the doors.

## Clamshell Configurations

Axial and Inline Centrifugal: Arrangements 4 and 9

## Benefits of Easy Access Fans

- Reduced Down Time
- Easy Maintenance
- Fast Cleaning
- Quick Inspection
- Less Labor
- Accelerated Repairs

## Centrifugal Fans

Backward inclined and airfoil fans are available with swingouts in sizes 182 through 660 in Class I, II and III construction. The inlet funnel is removable without disturbing the ductwork. Refer to Catalog 300 for SWSI BC/BAF Backward Inclined Airfoil Centrifugal Fans.

## Axial/Inline Centrifugal Fans

Tubeaxial, vaneaxial and adjustable pitch vaneaxial swingout fans are available in sizes 18 through 54. Refer to Catalog AX200 for Tubeaxial Fans, Catalog AX100 for Vaneaxial Fans and Catalog AX300 for Adjustable Pitch Vaneaxial Fans.

The TSL Tubular Centrifugal Inline Fan's patented airfoil wheel reduces horsepower and sound levels. Swingout fans are available in sizes 182 through 490 in Class I, II and III construction. Refer to Catalog 1001 for TSL Tubular Centrifugal Inline Fans.

*\*Patent No. 5,171,128 (wheel). Patent No. 4,775,294 (swingout).*

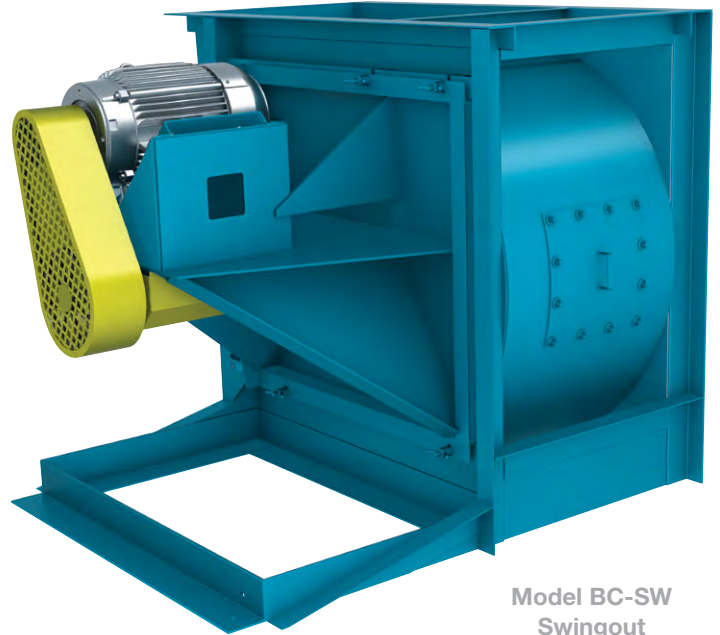
Model QSL Mixed Flow Fan combines the benefits of axial flow and centrifugal flow fans. Swingout construction is available for vertical mounting only. Available on sizes 182 to 600. Refer to Catalog 1060 for QSL Mixed Flow Fans.

## Models Available with Swingout Construction

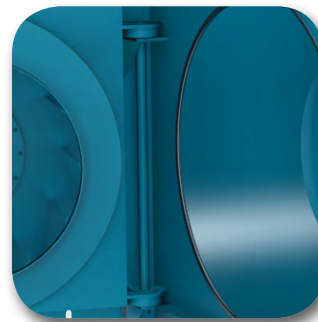
- ATAB / ATAD
- BAF-SW
- BC-SW
- QSL / QSLR / QSLSH
- TCTA / TCTS
- TCVA / TCVS
- TSL

## Construction Features

- Heavy-duty flanged ball bearing hinge system provides door support without the need for a track.
- 200,000 hour L-50 average life bearings are standard.
- Housing is continuously welded, heavy-gauge construction.
- Motor slide base standard on scroll swingout fans.
- Extra heavy T-handles to lock doors for a tight seal.
- Centrifugal Arrangement 9ST is available with a RH or LH door.
- Available as an optional construction, the swingout wheel design allows for the wheel to pivot out of the fan housing for simple cleaning and maintenance. A rod prop is standard with the swingout wheel option to keep the assembly open as well as a lockable hasp.



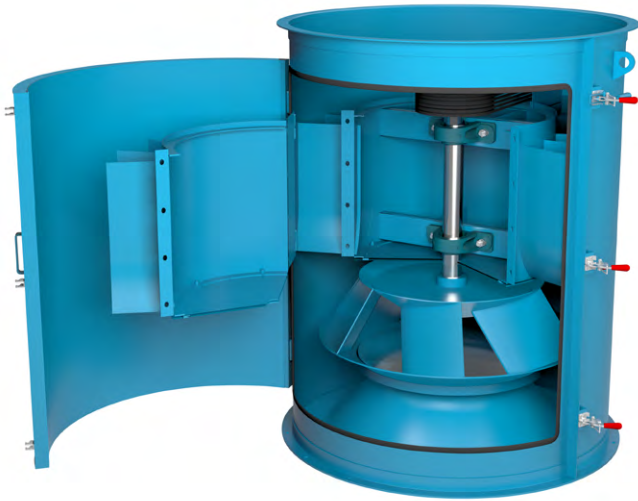
Model BC-SW  
Swingout



Heavy-duty ball  
bearings provide  
door support



Model QSL Swingout



Model QSL with  
Single Door Clamshell

## Axial, Inline Centrifugal and Mixed Flow Fans

Tubeaxial, vaneaxial and adjustable pitch vaneaxial clamshell fans are available in sizes 18 through 72. Refer to Catalog AX200 for Tubeaxial Fans, Catalog AX100 for Vaneaxial Fans and Catalog AX300 for Adjustable Pitch Vaneaxial Fans.

TSL tubular centrifugal clamshell fans are available in sizes 122 through 600 in Class I, II and III construction. Refer to Catalog 1001 for TSL Tubular Centrifugal Inline Fans.

Model QSL Mixed Flow Fan combines the benefits of axial flow and centrifugal flow fans. Clamshell construction is available for vertical mounting only. Available on sizes 150 to 730. Refer to Catalog 1060 for QSL Mixed Flow Fans.

### Models Available with Clamshell Construction

- ATAB / ATAD
- QSL / QSLR / QSLSH
- TCTA / TCTS
- TCVA / TCVS
- TCVX
- TSL

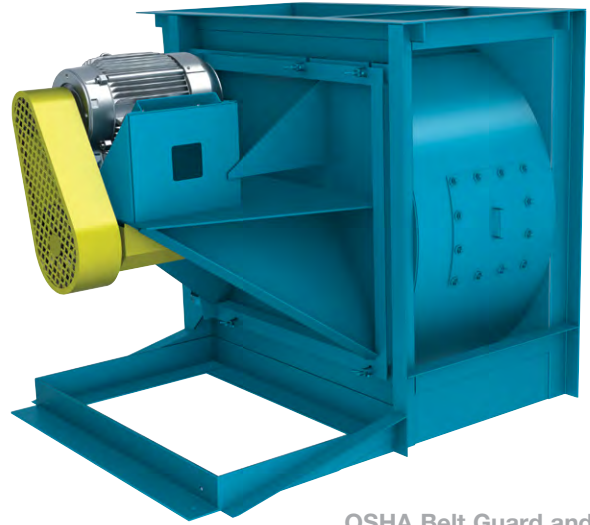
### Construction Features

- Heavy-duty flanged ball bearing hinge system provides door support without the need for a track.
- 200,000 hour L-50 average life bearings are standard.
- Housing is continuously welded, heavy-gauge construction.
- Extra heavy T-handles to lock doors for a tight seal.

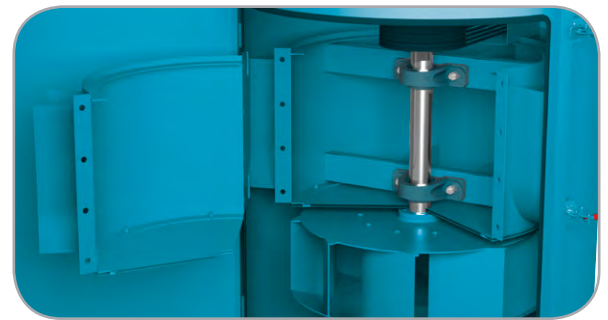


Model TSL with  
Double Door Clamshell

- 1 Steel, aluminum and stainless steel construction available.
- 2 FRP plastic inlet funnels available when aluminum is not suitable for spark resistant construction.
- 3 All clamshell fans feature removable bearing covers as standard. Removable bearing cover plates are optional on axial swingout fans.
- 4 Special coatings are available for corrosion resistance.
- 5 Quick open and bolted access doors allow for easy inspection. The quick open access door is specifically designed for fans that require frequent inspection.
- 6 OSHA belt guards are available for all swingout and clamshell fans.
- 7 Optional pivot motor base for constant belt tension available on scroll swingout fans.
- 8 Optional two-piece clamshell weather cover available on axial and tubular centrifugal swingout fans.



OSHA Belt Guard and Bolted on Access Door on Model BC-SW Swingout



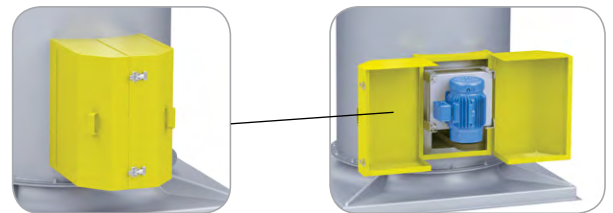
Removable Bearing Cover Plate on Model TSL Clamshell



Centrifugal Swingout Arrangement 9SS



Pivot motor base for Arrg. 9SS



Clamshell Motor Covers Provide Direct Access to a Fan's Motor Without Having to Remove the Motor Cover

# INDUSTRIAL PROCESS AND COMMERCIAL VENTILATION SYSTEMS

CENTRIFUGAL FANS | UTILITY SETS | PLENUM & PLUG FANS | INLINE CENTRIFUGAL FANS  
MIXED FLOW FANS | TUBEAXIAL & VANEAXIAL FANS | PROPELLER WALL FANS | PROPELLER ROOF VENTILATORS  
CENTRIFUGAL ROOF & WALL EXHAUSTERS | CEILING VENTILATORS | GRAVITY VENTILATORS | DUCT BLOWERS  
RADIAL BLADED FANS | RADIAL TIP FANS | HIGH EFFICIENCY INDUSTRIAL FANS | PRESSURE BLOWERS  
LABORATORY EXHAUST FANS | FILTERED SUPPLY FANS | MANCOOLERS | FIBERGLASS FANS | CUSTOM FANS



**TWIN CITY FAN & BLOWER**  
[WWW.TCF.COM](http://WWW.TCF.COM)

5959 TRENTON LANE N | MINNEAPOLIS, MN 55442 | PHONE: 763-551-7600 | FAX: 763-551-7601

©2018 Twin City Fan Companies, Ltd., Minneapolis, MN. All rights reserved. Catalog illustrations cover the general appearance of Twin City Fan & Blower products at the time of publication and we reserve the right to make changes in design and construction at any time without notice.