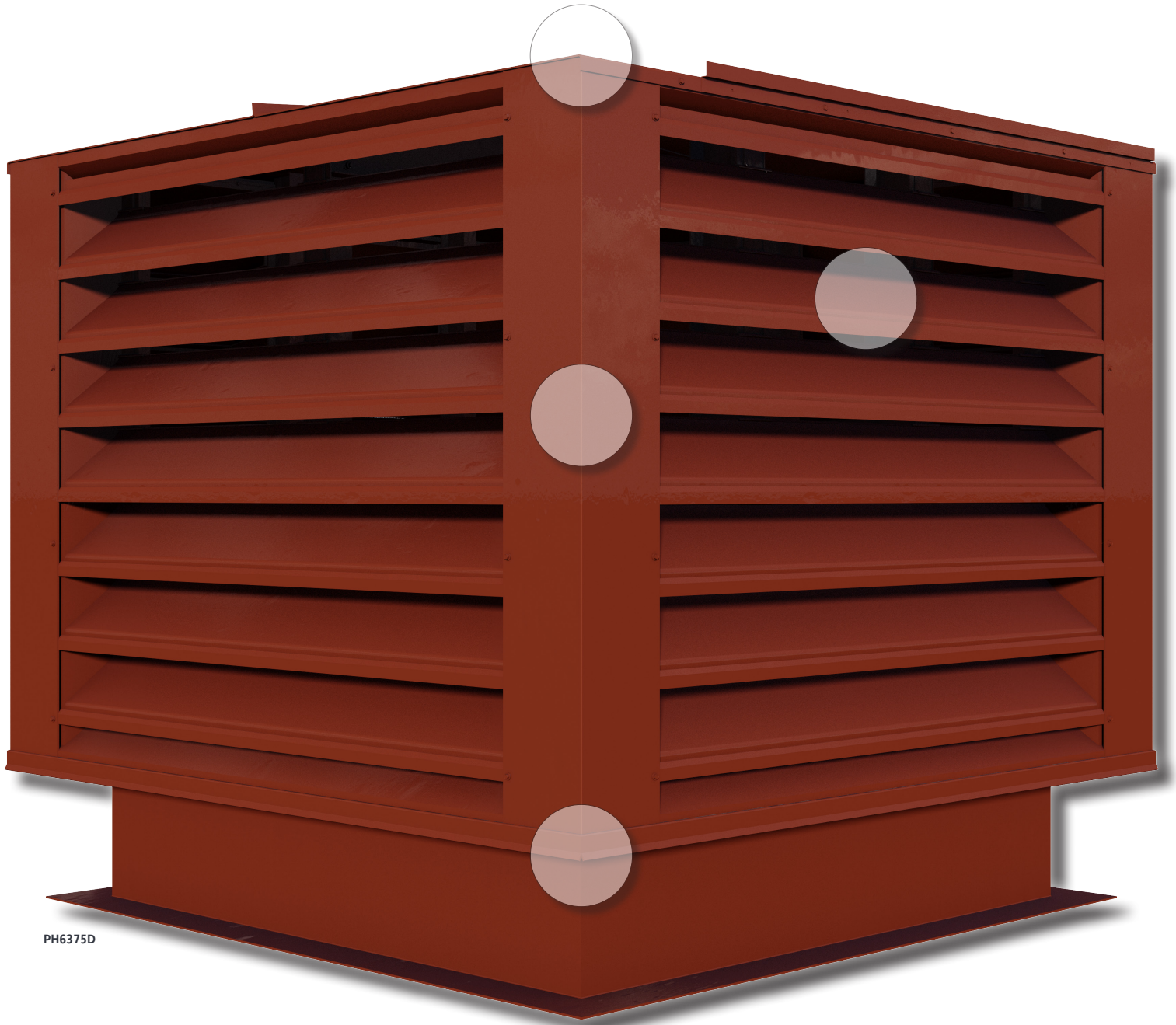





RUSKIM®

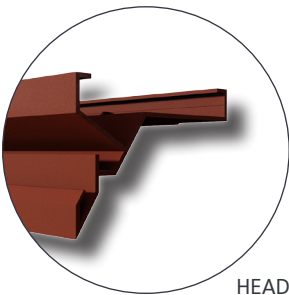
PENTHOUSE LOUVERS

PENTHOUSE LOUVERS

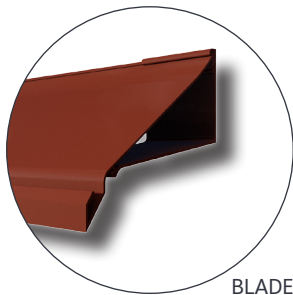


PH6375D

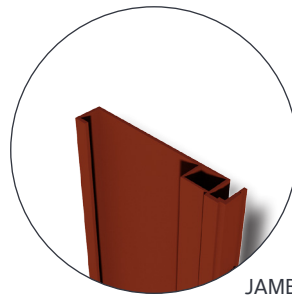
COMPONENT DETAILS



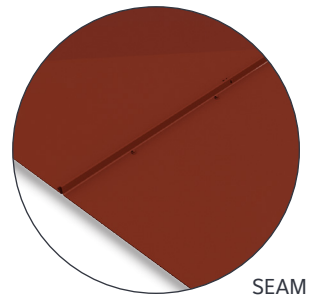
HEAD



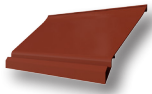
BLADE



JAMB



SEAM CAP

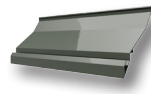


- BOXED CORNERS
- VARIABLE BLADES
- PROTECTIVE
- CUSTOMIZABLE
- EXCELLENT AIR INTAKE

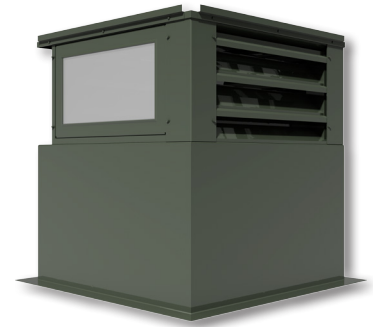


PHB
BOXED PENTHOUSE LOUVER

The PH6375D Boxed Penthouse Louver features boxed corners, aluminum/steel construction, and excellent air intake for fans and system inlets. Provides protection for roof openings.



- ANNEALED GLASS
- 4" FRAME DEPTH
- 54% FREE AREA
- EMERGENCY ACCESS
- CLASS I LEAKAGE SMOKE DAMPER



PHB4SEV
SMOKE EXTRACTION
BOXED PENTHOUSE LOUVER

The PHB4SEV Boxed Corner Smoke Extraction Penthouse meets both AMCA and NFPA requirements for respective components. It features accessible glass, class I leakage smoke damper, and 54% free area.

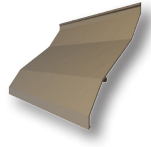


- VERTICAL BLADES
- INSULATED ROOF
- HINGED ROOF
- BOXED CORNERS
- MIAMI-DADE APPROVED



PHB6625D
MIAMI-DADE APPROVED
BOXED PENTHOUSE LOUVER

The PHBV Boxed Penthouse Louver features boxed corners, aluminum/steel construction, vertical blades, and excellent air intake for fans and system inlets. Provides protection for roof openings.

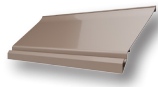


- MITERED CORNERS
- ALUMINUM BUILD
- VARIABLE BLADES
- AESTHETIC
- ARCHITECTURALLY STYLED



PHM
MITERED CORNER
PENTHOUSE LOUVER

The PHM837 Mitered Corner Penthouse Louver features mitered corners, aluminum construction, and excellent air intake for fans and system inlets. Provides protection for roof openings.



- IMPACT RESISTANT
- TDI LISTED
- ± 110 PSF LOADS
- HINGED AREA
- MIAMI-DADE APPROVED



PHB637HDXD
HURRICANE
PENTHOUSE LOUVER

The PHB6375HDXD Hurricane Penthouse Louver features impact resistance, hinged roof for easy access, and drainable blades. No rafters required. Approved for use in open structures.

PENTHOUSE LOUVERS

Penthouses are typically four louvers joined together with a roof, are mounted on a curb, and can be fashioned into custom shapes. Ruskin® assembles penthouses that are ordered up to 60" x 60". ANY louver model can be made into a penthouse and some models are even approved for hurricane prone regions (carry an NOA). Penthouses that are "oversized" are shipped loose and assembled on the roof of the structure.



MODEL	MIN. DIM.	MAX. DIM.	DEPTH	BLADE ANGLE	BLADE STYLE	BLADE ORIENTATION	FREE AREA	MIAMI-DADE/ FBC/TDI APPD.
PHM (Mitered) & PHB (Boxed)	12" x 12" x 12"	UNLTD A x UNLTD B x 84"	VARIABLE	VARIABLE	VARIABLE	HORIZONTAL	VARIABLE	VARIABLE
PHB4SEV	38" x 38" x 18"	38" x 38" x 18"	4"	37½°	DRAINABLE	HORIZONTAL	54%	-
PHB637HDXD	24" x 24" x 12" (Throat)	96" x 84" x 84" (Throat)	6"	37½°	DRAINABLE	HORIZONTAL	57%	MIAMI-DADE, FBC, TDI
PHB6625D	24" x 24" x 12" (Throat)	96" x 84" x 48" (Throat)	6"	COMPOUND	SINUSOIDAL	VERTICAL	33%	MIAMI-DADE, FBC, TDI

*More models at www.ruskin.com

*For the most current catalog information please visit www.ruskin.com, or use the Ruskin® Online Louver Selection Tool.

RUSKIN® LOUVER COLORS

*NO LOUVER SHAPES AVAILABLE



*We can match any color!