

ZPD15 ELECTRONIC ZONE PULSE DAMPER

Ruskin Model ZPD15 meets the industry requirements for a remote powered, manual balancing damper used in finished ceiling and difficult access applications. The ZPD15 offers an easily installed, maintenance free damper solution that interfaces with an optional hand-held damper motor control (model ZRC020). The hand-held device is equipped with an integral 9 volt power supply that operates the damper motor via optional RJ11 cable terminating at an RJ11 connector, located at the diffuser or wall box.

STANDARD CONSTRUCTION

FRAME

3" (76) x 20 (1.0) gage galvanized steel, with 5" (127) side plate

BLADE

20 (1.0) gage galvanized steel

AXLES

3/8" (10) square axle shaft

BEARINGS

Molded Lexan

MAXIMUM STATIC PRESSURE

2" water column (500 Pa)

MAXIMUM SYSTEM VELOCITY

2,000 fpm (10.2 m/s)

ACTUATOR

Gear drive, fail in place (FIP) motor

POWER REQUIREMENTS

9 volt DC, Powered through optional ZRC020 remote control

AVAILABLE SIZES

Maximum Size

Single Section – 48" x 14" (1219 x 356)

Multiple Section – 48" x 28" (1219 x 711) units over 14" (356) tall will be built in two sections with two actuators

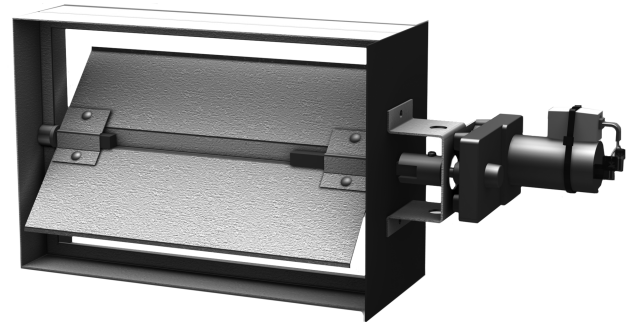
Minimum Size – 6" x 6" (152 x 152)

OPERATING TEMPERATURE

35° to 120°F (2° to 49°C)

FEATURES

- No field power wiring required
- Heavy duty construction
- Factory wired RJ11 connector at actuator



ZPD15 shown with ZRC020 remote control

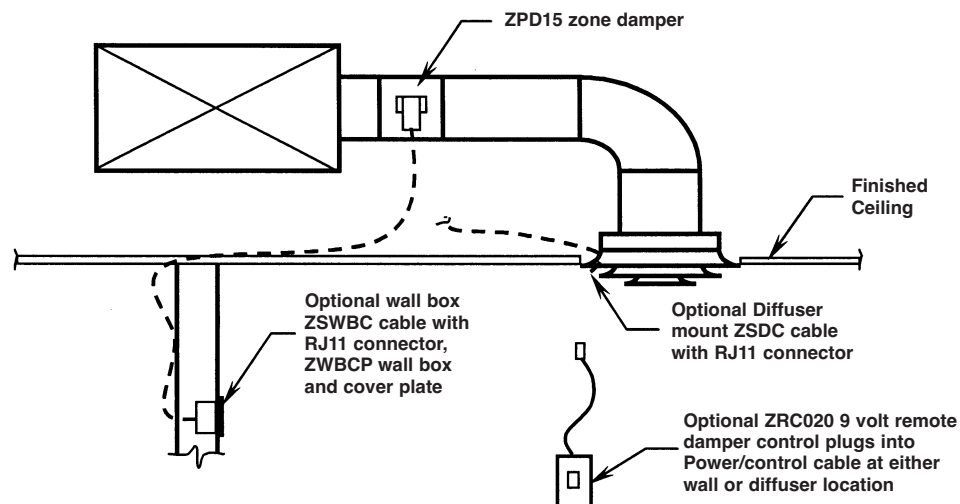


PACKAGE CONTENTS

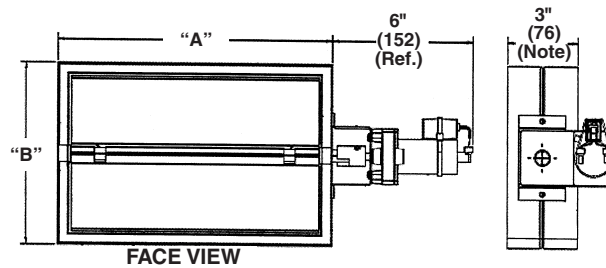
- Damper
- Factory mounted actuator with RJ11 connector
- Installation Instructions

VARIATIONS

- ZRC020 remote damper motor control (one required per job site)
- Wall box plenum cable
- Wall box
- Wall box cover
- Diffuser plenum cable

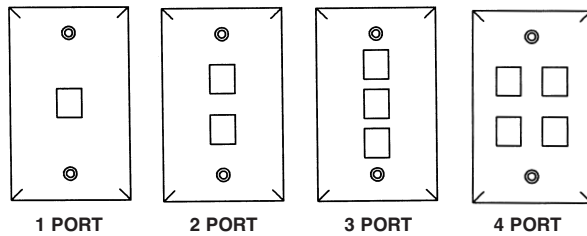


DIMENSIONAL DETAILS

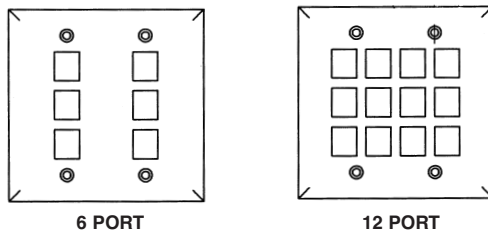


NOTE: 5" Side Plate on motor side runs entire B dimension (not shown for clarity).

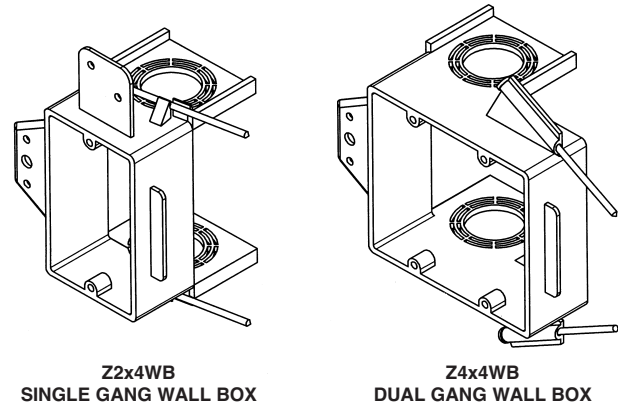
WALL BOX (ZWBCP) VARIATION DETAILS



For use with Z2x4WB Wall Box



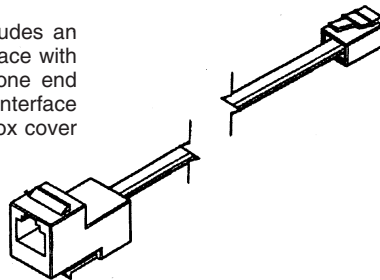
For use with Z4x4WB Wall Box



Wall boxes are constructed of ABS plastic and can be used in wood or steel stud construction (Can also be mounted in the ceiling). Multiple dampers can terminate at one wall box when a multiple port cover plate is selected. All cables, wall boxes and cover plates can be ordered on REPS. Order as an option to the damper, or on a separate line item by selecting from zone control accessories.

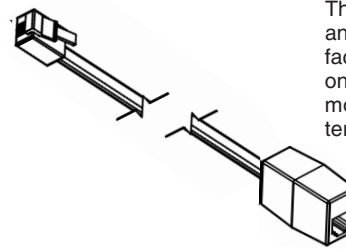
PLENUM CABLE VARIATION DETAILS

The wall box cable includes an RJ11 connector to interface with the 9 volt actuator on one end and a keystone jack to interface with any ZWBCP wall box cover plate.



Typical Wall Box Cable
ZSWBC 20' Standard (optional 10' and 50')
ZCWBC Custom Length (Consult Factory)

The diffuser cable includes an RJ11 connector to interface with the 9 volt actuator on one end and an RJ11 modular inline coupler to terminate at the diffuser.



Typical Diffuser Cable
ZSDC 20' Standard
ZCDC Custom Length (Consult Factory)

SUGGESTED SPECIFICATION

Furnish and install, at locations shown on plans or as in accordance with schedules, rectangular remote control operated zone control dampers meeting the following specifications: Dampers shall be of the butterfly type, consisting of a single blade, fastened to a 3/8" (10) mild steel square shaft. Frame shall be minimum 20 gage (1.0) G60 galvanized steel and include full circumference rolled stiffener beads for added strength. Blade shall be of the same material as the frame. Bearing shall be molded lexan, and shall be formed to the shape of the axle, reducing leakage around shaft penetration points. A 9 volt DC operated damper motor shall be factory installed and

commissioned prior to shipping to the job site. Actuator shall include a factory wired RJ11 connector. Damper shall be installed with plenum rated RJ11 cable terminating at the RJ11 damper motor connector on one end and an RJ11 connector located in a wall box or diffuser on the other end. The damper assembly shall be powered by a remote 9 volt battery operated controller that is plugged into the RJ11 connector located in the wall box or diffuser. Material and construction specifications shall be minimum equivalent to Ruskin Model ZPD15.

RUSKIN®

3900 Dr. Greaves Rd.
Kansas City, MO 64030
(816) 761-7476
FAX (816) 765-8955
www.ruskin.com