

RUS-M24-MOD Electric 24 Volt Modulating Control Damper & Louver Actuator

DIRECT COUPLED SPRING RETURN

DESCRIPTION

Ruskin model RUS-M24-MOD electric modulating (proportional) spring return actuator designed for factory mounting on dampers and operable louvers. Actuators can be mounted directly to a damper or louver shaft from 5/16 to 5/8 inch (8 to 16 mm) diameter with a universal clamp.

FEATURES

- Designed specifically to operate damper and operable louver applications up to the square footage face area listed below.
- Reversible mounting design simplifies installation and enables the actuator to be spring return in either direction.
- Electronic stall detection through entire rotation range extends life by deactivating the motor when an overload condition is detected
- 5 Year factory warranty



RUS-M24-MOD Electric Spring-Return Actuator

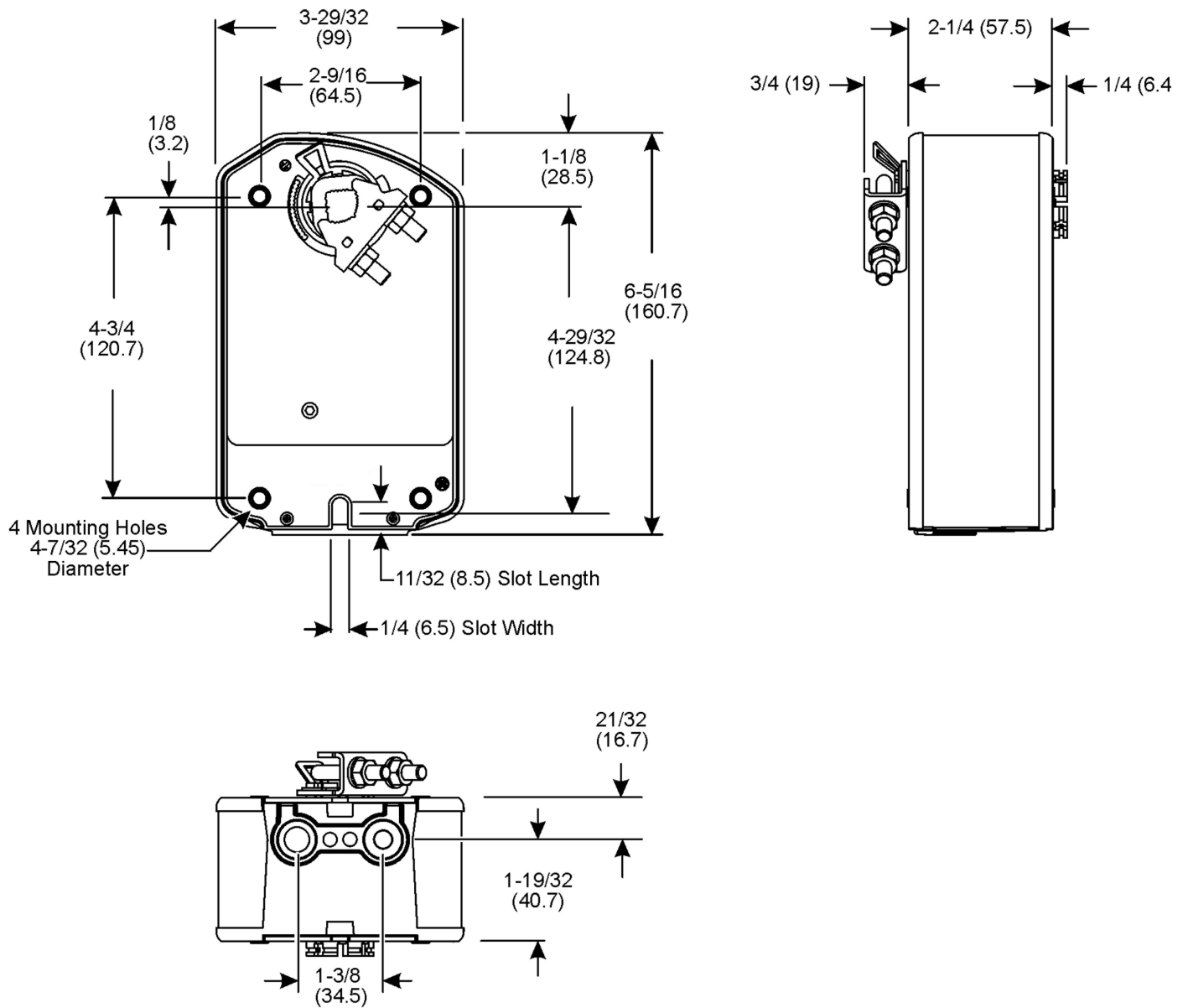
TECHNICAL INFORMATION	
COMMERCIAL DAMPER FACE AREA*	12 sq. ft. with seals 24 sq. ft. without seals
LOUVER FACE AREA	18 sq. ft. with seals 30 sq. ft. without seals
INDUSTRIAL DAMPERS	Dependent on model and system conditions (Consult Ruskin)
RUNNING TIME	Drive: 150 sec Spring: < 17 to 25
INPUT SIGNAL	0(2) to 10 VDC 0(4) to 20 mA (w/ 500 ohm resistor)
POSITION FEEDBACK	0(2) to 10 VDC
POWER SUPPLY	AC 24 V 50/60 Hz OR DC 24 V
POWER CONSUMPTION	AC: Running 7.9 VA, Holding 5.5 VA DC: Running 3.5 W, Holding 1.9 W
TRANSFORMER SIZE	8 VA
DIRECTION OF ROTATION	Reversible with cw/ccw mounting
POSITION INDICATION	Visual indication 0° to 95°
OPTIONAL AUXILIARY SWITCH (-S Models)	N/A (Consult Ruskin Special Order)
ELECTRICAL PROTECTION	Double insulated
ELECTRICAL CONNECTION	3 ft, 18 ga appliance cable (-S models have 2 cables) 1/2" conduit connector
OVERLOAD PROTECTION	Electronic throughout 0° to 95° rotation
ROTATION PROTECTION	Max 95° adjust. with mechanical stop (optional)
HOUSING	NEMA 2 (IP54)
HOUSING MATERIAL	Galvanized Steel
HUMIDITY	5 to 90% non-condensing

*Consult Ruskin for proper actuator sizing on TED50 series dampers

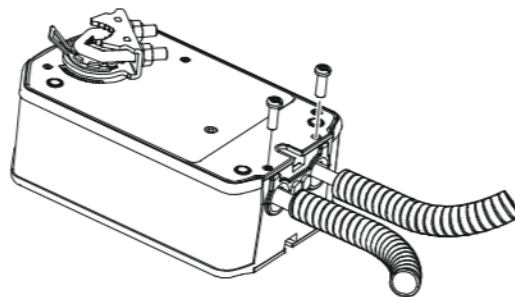
TECHNICAL INFORMATION	
AMBIENT TEMPERATURE	-40 to 140°F (-40 to 60°C); 90% RH Maximum, Non-condensing
STORAGE TEMPERATURE	-40 to 185°F (-40 to 85°C); 95% RH Maximum, Non-condensing
AGENCY LISTINGS	UL 60730-1A: 2003-08 UL 60730-2-14: 2002-02 UL 2043 C22.2 No. 24-93
NOISE LEVEL AT APPROX. 40" DISTANCE	Drive: <35 dba Holding: <20 dba Spring: <52 dba
WEIGHT	RUS-M24-MOD: 3.43 lb (1.56 kg)
SERVICING	Maintenance free
QUALITY STANDARD	ISO 9001

ACCESSORY	
ADJUSTABLE END STOP KIT	Part #M9208-603 From 35° to 95° in 5° increments
WEATHER SHIELD	Part #M9000-322 NEMA4X, IP66 impact-grade plastic enclosure with UV inhibitors to extend life

DIMENSIONS



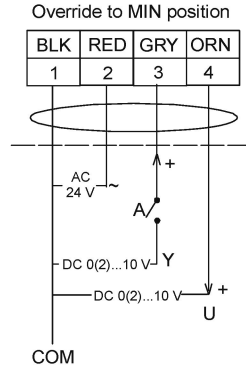
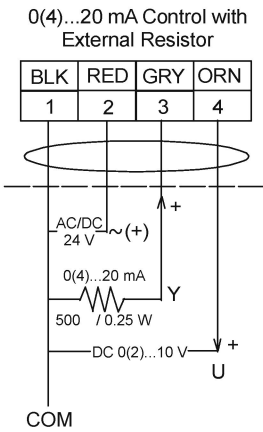
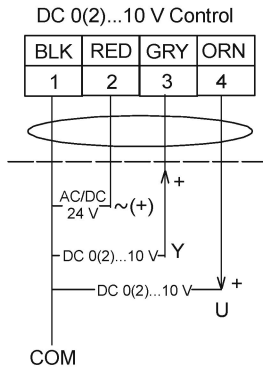
CONDUIT CONNECTIONS



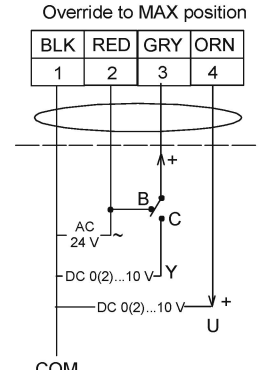
All RUS-M24-MOD Series Actuators accept 3/8 in. trade size flexible metal conduit.

*Consult Ruskin for proper actuator sizing on TED50 series dampers

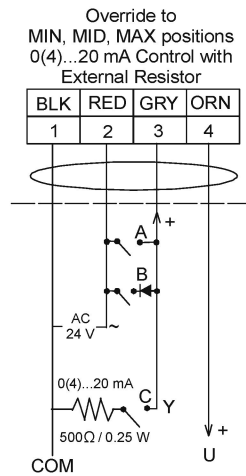
WIRING RUS-M24-MOD PROPORTIONAL ACTUATORS



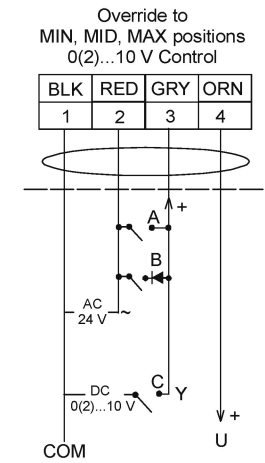
A Open = MIN Position
A Closed = Normal Operation



B Closed = MAX Position
C Closed = Normal Operation



FUNCTION	A	B	C
0% (MIN)			
50% (MID)			
100% (MAX)			
NORMAL			



FUNCTION	A	B	C
0% (MIN)			
50% (MID)			
100% (MAX)			
NORMAL			

RUS-M24-MOD Control Wiring Diagram (Overrides)

IMPORTANT: Do not install multiple RUS-M24-MOD Series Actuators connected to the same mechanical load. Master-Slave application of RUS-M24-MOD Series Actuators requires that each actuator be connected to independent loads.

Note: In Master-Slave applications, the slave actuator lags the master actuator position by a few seconds.



3900 Dr. Greaves Rd.
Kansas City, MO 64030
(816) 761-7476
FAX (816) 765-8955
www.ruskin.com

FIG.M24-0302Z01_wf