

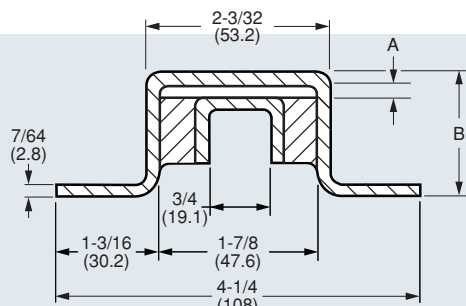


# Channel Mounts – To 52 lbs./in.

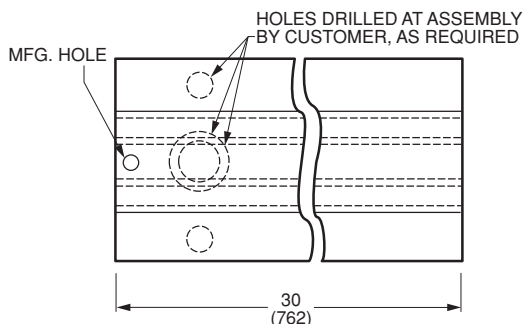
vibrationmounts.com Phone: 516.328.3662 Fax: 516.328.3365

- **MATERIAL:** Isolator – Natural Rubber  
Channels – Steel

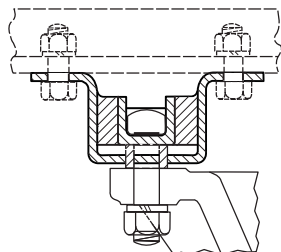
- **FOR LOADS UP TO 52 lb. / in. (0.93 kgf / mm) OF LENGTH**  
• **SUPPLIED IN 30 INCH (762 mm) LENGTHS**



INSTALLATION INFORMATION



Style 110 for Suspended Loads

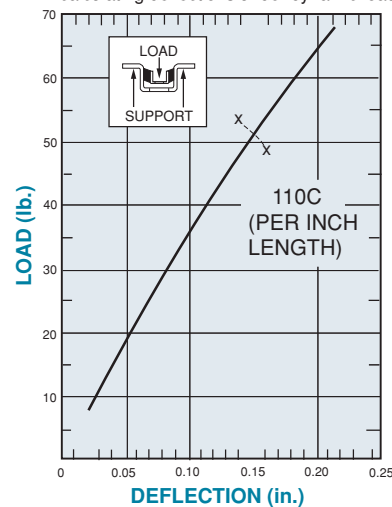


Spacers and Mounting Hardware NOT Provided

**NOTE:** Dimensions in ( ) are mm.

### LOAD DEFLECTION GRAPH

Deflections below the line x-x are considered safe practice for static loads; data above that line are useful for calculating deflections under dynamic loads.



Catalog Number	Load Limit lb./in. (kgf/mm)	Forcing Frequency in Cycles per Minute					Dimensions in. (mm)	
		1200	1500	1800	2100	2400	A	B
		Min. Load for 81% Isolation lb./in. (kgf/mm)						
V10Z 5-110C	52 (0.93)	52 (0.93)	35 (0.63)	26.5 (0.47)	20 (0.36)	16 (0.29)	3/8 (9.5)	1-39/64 (40.9)

**NOTE:** 81% vibration absorption (usually satisfactory) will be obtained when the mount indicated is operating at the minimum load shown for each forced frequency. Better than 81% absorption will be obtained either with a greater load (within the limits shown) for a given forced frequency, or with a higher forced frequency for a given load.