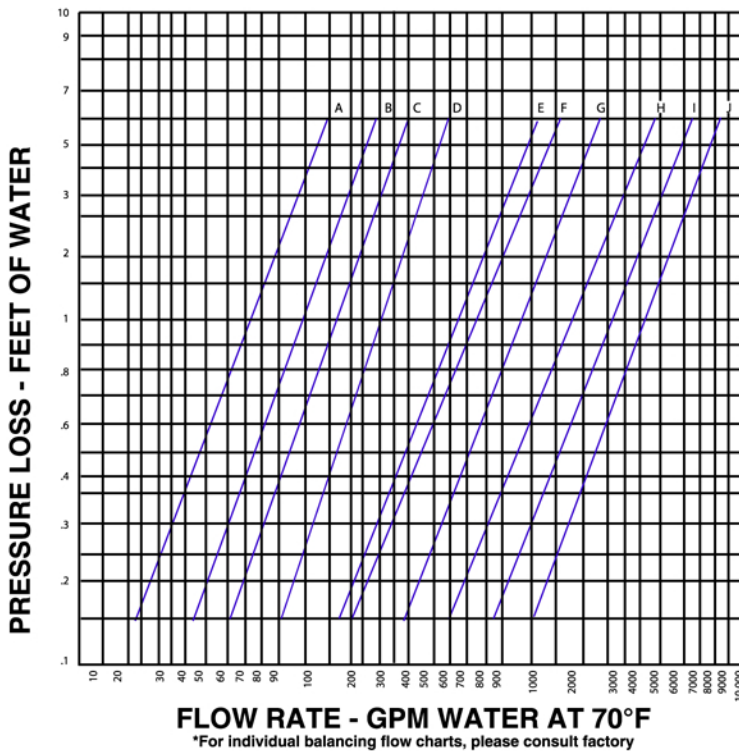
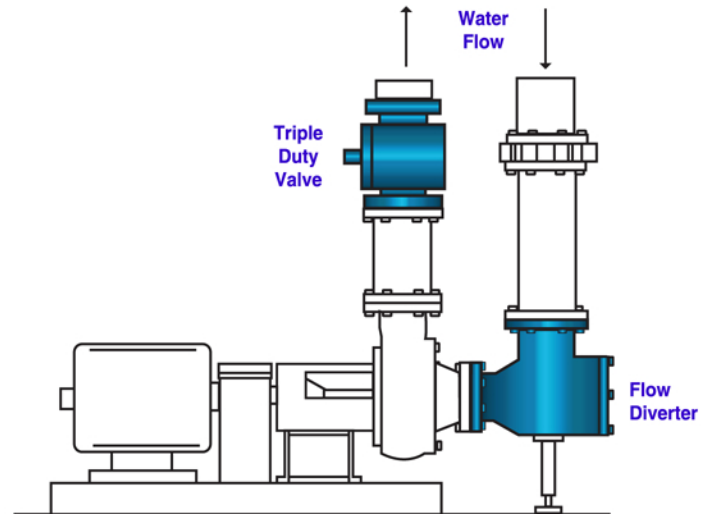


American HVAC Flow Diverter

Centrifugal Pump Accessories

Features:

- 90° Elbow/Strainer Combination
- 304 Stainless Steel Strainer
- 20 Mesh Start up Strainer
- Integral Straightening Vanes
- Ductile Iron Body
- Stainless Bolting
- Pump Protection
- Space Savings
- Class 125/150 maximum pressure 275 PSI
- 240° F maximum working temperature
- Painted Exterior



Bill of Materials

DESCRIPTION	MATERIAL
Body	ASTM A536 Ductile Iron/Class 125/150
O'Ring	Nitrile O'Ring
Cover	ASTM A536 Ductile Iron
Screen	3/16" Perforated 304 Stainless Steel
Start up Screen	20 Mesh 304 Stainless Steel
Bolting	ASTM 304 Stainless Steel
Nuts	ASTM 304 Stainless Steel
Pipe Plugs	ASTM A536 Ductile Iron

- A- 2X1.5
- B- 2X2, 2.5X2, 3X2
- C- 2.5X2.5, 3X2.5
- D- 3X3, 4X3
- E- 4X4, 5X4, 6X4
- F- 5X5, 6X5
- G- 6X6, 8X6
- H- 8X8, 10X8, 12X8
- I- 10X10, 12X10
- J- 12X12

All packaging materials, thread protectors, plastic plugs and caps must be removed before installation.

Dimensions are subject to change without notice, please confirm actual dimensions with factory at time of order.

JOB NAME _____
 LOCATION _____

 CONTRACTOR _____
 CONTRACTOR P.O. NO. _____

ITEMS	QUANTITY
_____	_____
_____	_____
_____	_____
_____	_____
_____	_____



2701 W. Concord Street
 Broken Arrow, OK 74012
 Toll Free: 866-204-5229
 PH: 918-317-0401
 FAX: 918-317-0407
 www.wheatleyhvac.com
 e-mail: sales@globalflowproducts.com

Fabricated Flow Diverter/Suction Diffuser

250#/300# PSI

Features:

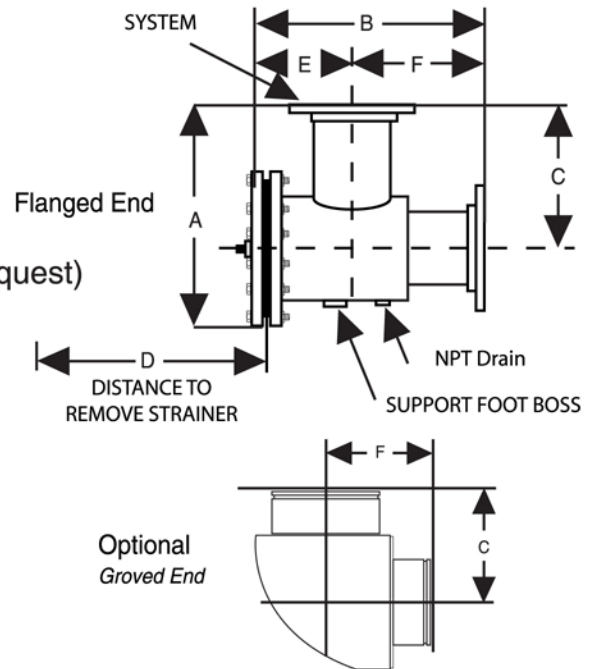
- Carbon Steel Construction
- Space Saving Design
- 20 Mesh Stainless Steel Start up and 5/32" Permanent Strainer combines Strainer & 90° Elbow
- Back Pull Out Strainer
- Class 250/300 RF Flanged
- Straightening Vanes (Stainless Steel Material upon request)
- Maximum Temperature 250° Degrees

Optional Features:

- Stainless Steel and other materials
- Larger Sizes upon Request
- Davit arms

All packaging materials, thread protectors, plastic plugs and caps must be removed before installation.

Dimensions are subject to change without notice, please confirm actual dimensions with factory at time of order.



PART NUMBER	SIZE	SYSTEM CONN. (IN.)*	PUMP CONN. (IN.)*	A	B	C	D	E	F
FD-1515-F3	1.5 X 1.5	1.5	1.5	12 11/16	13 1/16	7 7/8	7 1/8	5 15/16	7 1/8
FD-0213-F3	2 X 1.25	2	1.25	12 11/16	13 1/16	7 7/8	7 1/8	5 15/16	7 1/8
FD-0215-F3	2 X 1.5	2	1.5	12 11/16	13 1/16	7 7/8	7 1/8	5 15/16	7 1/8
FD-0202-F3	2 X 2	2	2	12 11/16	13 1/16	7 7/8	7 1/8	5 15/16	7 1/8
FD-2515-F3	2.5 X 1.5	2.5	1.5	12 11/16	13 1/16	7 7/8	7 1/8	5 15/16	7 1/8
FD-2502-F3	2.5 X 2	2.5	2	12 11/16	13 1/16	7 7/8	7 1/8	5 15/16	7 1/8
FD-2525-F3	2.5 X 2.5	2.5	2.5	12 11/16	13 1/16	7 7/8	7 1/8	5 15/16	7 1/8
FD-0315-F3	3 X 1.5	3	1.5	12 11/16	13 1/16	7 7/8	7 1/8	5 15/16	7 1/8
FD-0302-F3	3 X 2	3	2	12 11/16	13 1/16	7 7/8	7 1/8	5 15/16	7 1/8
FD-0325-F3	3 X 2.5	3	2.5	12 11/16	13 1/16	7 7/8	7 1/8	5 15/16	7 1/8
FD-0303-F3	3 X 3	3	3	14 1/2	15 15/16	9	9 1/4	6 15/16	9
FD-0415-F3	4 X 1.5	4	1.5	14 1/2	15 15/16	9	9 1/4	6 15/16	9
FD-0402-F3	4 X 2	4	2	14 1/2	15 15/16	9	9 1/4	6 15/16	9
FD-0425-F3	4 X 2.5	4	2.5	14 1/2	15 15/16	9	9 1/4	6 15/16	9
FD-0403-F3	4 X 3	4	3	14 1/2	15 15/16	9	9 1/4	6 15/16	9
FD-0404-F3	4 X 4	4	4	16 1/4	17 1/2	10	10 1/4	7 1/2	10

F3 = Fabricated 250#/300#

*Grooved end available through 10" as Standard Production. Larger sizes are special and priced on application.

JOB NAME _____
 LOCATION _____

 CONTRACTOR _____
 CONTRACTOR P.O. NO. _____

ITEMS	QUANTITY
_____	_____
_____	_____
_____	_____
_____	_____
_____	_____

American WHEATLEY
HVAC PRODUCTS®
A GFP COMPANY

2701 W. Concord Street
 Broken Arrow, OK 74012
 Toll Free: 866-204-5229
 PH: 918-317-0401
 FAX: 918-317-0407
 www.wheatleyhvac.com
 e-mail: sales@globalflowproducts.com