



[HOME](#) » [COMMERCIAL CONSTRUCTION](#) » [ARCHITECTURAL NON-SEISMIC](#) » LPRSH LOW PROFILE RUBBER AND SPRING HANGERS



ARCHITECTURAL NON-SEISMIC

LPRSH LOW PROFILE RUBBER AND SPRING HANGERS

LPRSH Series are low profile spring and neoprene hangers designed for low and high frequency applications where a disturbance is occurring from within or outside of an area that is to be protected from low and high frequency vibrations.

The LPRSH Series isolators contain a standard coil spring with up to 2" of static deflection and a neoprene element of up to .30" of deflection. The spring isolator is seated in a neoprene cup with an integral bushing to prevent the upper support attachment from coming in contact with the isolator housing. The springs are color-coded to indicate load capacity and for ease of

installation and inspection in the field.

Like the LPRH Series, the LPRSH Series hangers are designed for the additional capability of supporting secondary ceilings and/or mechanical services from the same housing. This design only requires about 4" above the cold rolled channels for installation. The unique housing construction of the LPSH hangers allow for two standard 1 1/2" cold rolled channels at each isolator location. Pencil rods, clips, straps, nuts and bolts are not required for fastening the channels to the isolator.

The LPRSH Series is provided with a 1/2" diameter eyelet at the top for use in the event that threaded inserts for attachment are not used for installation. Additional bolts and eyelets at the bottom are factory supplied if additional services need to be supported.

FEATURES & BENEFITS

- Structural housing permits support of additional ceilings and/or mechanical services directly from the housing
- Low profile design uses no additional space above or below standard drywall — occupying only 3 1/2" of total space for the entire system
- Unique housing construction allows for standard 1 1/2" cold rolled channel suspension members to be installed tight to the overhead deck
- Installation without the use of clips, eyelets and pencil rods
- Eyelet is provided as an option to threaded inserts for simplified attachment and installation

- Color stripe for easy identification during installation and inspection
- Integral bushing molded to the isolation element prevents upper support attachment contact with the isolator housing

APPLICATIONS

- Commercial utility and HVAC space
- Computer operation rooms
- Transportation depots
- Office and residential complexes
- Performing arts centers
- Entertainment, social event spaces and health clubs
- Hospitals and research facilities

DOWNLOADS

Spec Sheets

No downloads for this item at this time.

Submittal Drawings

1" Deflection

[Model LPRSH 1C 15-370 lbs. Low profile spring and elastomeric isolator 1 inch deflection.pdf](#)

2" Deflection

[Model LPRSH -2Q 90-450 lbs. Low profile spring and elastomeric isolator 2 inch deflection.pdf](#)

RELATED SERVICES

Engineering

The engineers we employ hold the highest industry-recognized credentials in structural analysis, elastomer development and system dynamics.

Certification

We are the first ISO accredited PCA ISO-17065, third-party certification body for special seismic certification of non-structural building components and their mounting configurations by the ICC's International Accreditation Service.

Test & Measurement

We are the only ISO 17025:2005 Accredited Seismic Simulation Test Laboratory with a triaxial shake table owned and operated by California licensed Structural engineers.

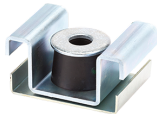
Testing Services Update

DCL now offers Nuclear Qualification and Testing services.

In partnership with [Greenberry Industrial](#), we now offer testing services that meet the requirements of ASME NQA-1.

[Call for more information.](#)

RELATED PRODUCTS



[LPNH Low Profile Neoprene Hangers](#)



[LPRH Low Profile Rubber Hangers](#)



[LPSH Low Profile Spring Hangers](#)



[RHC/RHDC Neoprene Hanger with Tabs](#)



[SHSC Spring Hanger with Tabs](#)