



[HOME](#) » [COMMERCIAL CONSTRUCTION](#) » [ARCHITECTURAL NON-SEISMIC](#) » QFFG FIBERGLASS BLOCK



ARCHITECTURAL NON-SEISMIC

## **QFFG FIBERGLASS BLOCK**

The QFFG Series are neoprene-coated fiberglass mounts used in floating floor systems. The QFFG Series offer constant natural frequencies over the entire load range. These mounts are designed for air spaces of 2", and are best used in applications where improved isolation performance and low cost installation is required.

The architectural design consists of two floor slabs - the floating or isolated bearing slab and the structural floor slab. The QFFG Series serve as a permanent load bearing resilient material that connects the two slabs and provide positive air gaps between two-floor systems. This series is also available factory mounted to 4' x 4' sections of pressure treated plywood, providing the

contractor with their first course of underlayment.

The QFFG Series combine simplicity with the long-lasting performance of neoprene-coated fiberglass and very simple, low cost installation.

## **FEATURES & BENEFITS**

- Constant natural frequencies over the entire load range provide superior isolation in small airspaces
- This series is also available factory mounted to 4' x 4' sections of pressure treated plywood, providing the contractor with their first course of underlayment
- Unit accommodates air spaces of 2" – providing excellent flexibility in a range of building applications
- Neoprene-coated fiberglass isolators offer simple, low cost installation

## **APPLICATIONS**

- Commercial utility and HVAC space
- Computer operation rooms
- Transportation depots
- Office and residential complexes
- Performing arts centers
- Entertainment, social event spaces and health clubs
- Hospitals and research facilities

## **DOWNLOADS**

## DOWNLOADS

---

### Spec Sheets

No downloads for this item at this time.

### Submittal Drawings

[Model QFFG 400-900 lbs. Isolated floating floor with fiberglass block.pdf](#)

---

## RELATED SERVICES

---

### Engineering

The engineers we employ hold the highest industry-recognized credentials in structural analysis, elastomer development and system dynamics.

### Certification

We are the first ISO accredited PCA ISO-17065, third-party certification body for special seismic certification of non-structural building components and their mounting configurations by the ICC's International Accreditation Service.

### Test & Measurement

We are the only ISO 17025:2005 Accredited Seismic Simulation Test Laboratory with a triaxial shake table owned and operated by California licensed Structural engineers.

### **Testing Services Update**

DCL now offers Nuclear Qualification and Testing services.

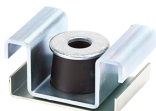
In partnership with [Greenberry Industrial](#), we now offer testing services that meet the requirements of ASME NQA-1.

[Call for more information.](#)

---

## RELATED PRODUCTS

---



[LPNH Low Profile Neoprene Hangers](#)